

DRAFT

THE NATIONAL SAMPLE SURVEY

ELEVENTH ROUND
AUGUST 1956—FEBRUARY 1957 (RURAL)

NUMBER 170

TABLES WITH NOTES
ON
SOME ASPECTS OF AGRICULTURE IN INDIA

APRIL, 1967
INDIAN STATISTICAL INSTITUTE
CALCUTTA-35

THE NATIONAL SAMPLE SURVEY

ELEVENTH ROUND : AUGUST 1956 TO FEBRUARY 1957 (RURAL)

NUMBER : 170

TABLES WITH NOTES
ON
SOME ASPECTS OF AGRICULTURE IN INDIA

APRIL 1967
INDIAN STATISTICAL INSTITUTE
CALCUTTA-35

Note of Caution

Being the scanned copy of old NSS report, this document may suffer from following limitations -

- i. Poor Quality of the Scanned images.
- ii. Page(s) missing in between.
- iii. Improper sequencing/arrangement.

THE NATIONAL BUREAU OF STANDARDS
WASHINGTON, D. C. 20540

1960

U.S. DEPARTMENT OF COMMERCE
NATIONAL BUREAU OF STANDARDS

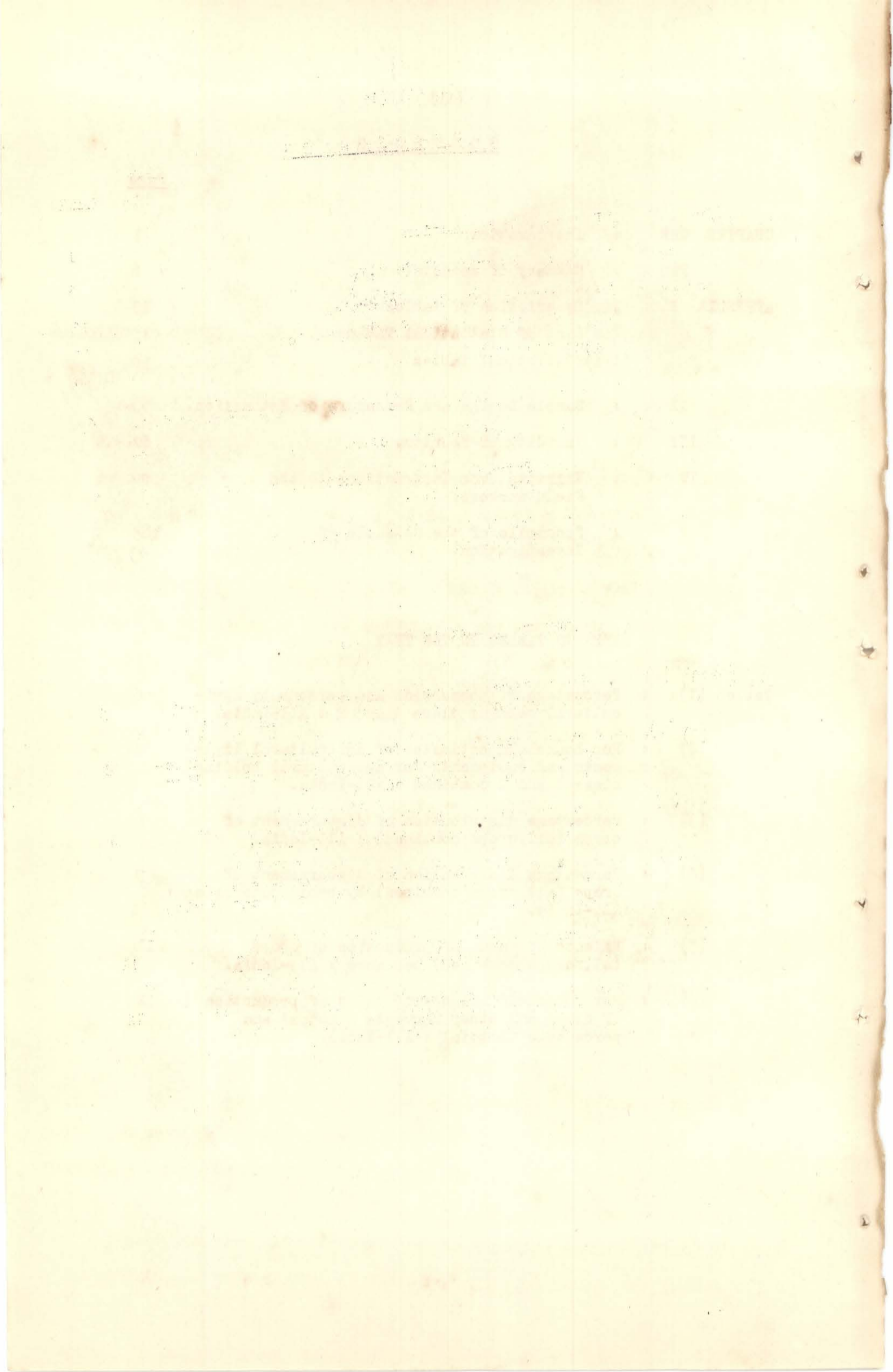
1960
NATIONAL BUREAU OF STANDARDS
WASHINGTON, D. C. 20540

C O N T E N T S

	<u>Page</u>
CHAPTER ONE : Introduction	1
TWO : Summary of Results	6
APPENDIX I. : (i) Description of tables	13
(ii) List of Statistical Tables	15
(iii) Statistical tables	19
II : Sample Design and Procedure of Estimation.	63
III : Validity of Results.	67
IV : Extracts from Instructions to the Field workers.	99
V : Fascimile of the Schedule of Investigation.	105

INDEX TO TABLES IN THE TEXT

Table (1) : Percentage of households and persons by agricultural holding class 1 and 2 : All-India.	6
(2) : Per household estimates of agricultural implements and equipments for agricultural holding class 1 and 2 combined : All-India.	8
(3) : Percentage distribution of disbursement of crops (all crops combined) : All-India.	9
(4) : Percentage distribution of disbursement of crops (all crops combined) by broad categories : All-India.	9
(5) : Balance of value of production of crops (all crops combined) per acre : All-India.	11
(6) : Per household balance of value of production of crops and other harvests : actual and percentage to total : All-India.	12



Tables with notes on Some Aspect of Agriculture in India

Chapter One

Introduction

1.1 Data on various aspects of agriculture in India have been collected by National Sample Survey from time to time since its very inception. The findings of first round were published in NSS Report No. 1. In second, third and fourth rounds of NSS not much information on agriculture was collected except for the production details of some crops. It was from fifth round (December 1952 - March 1953) that greater stress was given on agricultural aspects. Data were collected both on production and cost of cultivation of crops. It may be mentioned that for the first time in the country such a large scale survey was taken up on cost of cultivation of crops at all-India level. The survey was repeated in sixth round (May 1953 - September 1953) and seventh round (October 1953 - March 1954). A report on this material, covering fifth, sixth and seventh rounds has been published entitled "Some Aspects of Cost of Cultivation, NSS Report No. 32, Parts I, II and III".

1.2 The survey on the subject was taken up again in the Eleventh round after a gap of three rounds (about three years). The data were collected through the household schedule 2.1 : Agriculture and Animal husbandry for the fixed reference period July 1955 to June 1956. The present report deals with the agricultural part only.

1.3 Broadly, the items of information for which the data were collected remained the same so far as the details for cost of cultivation were concerned. The present report furnishes information based on 7175 sample households selected from 1848 sample villages scattered all over the country from rural areas only. The data are collected on household enquiry conducted after the harvest.

1.4 The survey was carried out in the whole of India excepting Andaman and Nicobar Islands, North East Frontier Agency, Naga Hills.

1.5 Period of survey : The survey was started in the month of August 1956. It continued till the end of February 1957.

1.6 Scope of the present report : The results for the previous rounds have already been published in Report No. 32 in the three parts for major and minor crops. Unlike the previous report which presented only details of cost of cultivation this report also deals briefly with details of utilisation of land possessed by the household production and disbursement of crops, agricultural implements and equipments and other harvests.

1.7 The households were classified into two agricultural holding classes as follows :

- 1) Agricultural holding class 1 : households which did not possess cultivated land
- 2) Agricultural holding class 2 : households which possessed cultivation land.

1.8 Estimates relating to general particulars of households and of land utilisation, agricultural implements and equipments and other harvests are presented for agricultural holding class 1 and 2 separately and combined. On the other hand, estimates of production and disbursement of major and minor crop and cost of cultivation are presented for agricultural holding class 2 only. This is because of the fact that cultivation is done mainly by households belonging to agricultural holding class 2 only.

1.9 The results are presented at all-India level only. The estimates presented in the report are in the form of ratios per household or per per acre area harvested, in general. In presenting the results all the seasons are combined.

1.10 The results deal with broad aspects of agriculture during the reference period and do not claim to have exhaustiveness.

1.11 Information on the value of Agricultural implements and equipments was collected as on 1st July 1956; that on cost of materials and hired labour charges used for reclamation, purchase, sale and breakage of items, repair and maintenance charges of implements was collected with particulars on cost of cultivation for the year July 1955 - June 1956. Average value (per household) of these items and other equipments owned and possessed by the household is also presented in the report.

1.12 Data on production and disbursement of each crop were also collected and the results are presented by per acre area harvested of each crop.

Disbursement of crop was recorded under the following heads :

- 1) consumed by household
- 2) share or rent
- 3) in exchange of goods and services
- 4) crop loan
- 5) sale
- 6) wastage
- 7) stock

It may be mentioned that seeds used for production ~~were~~ ~~included~~ were included under consumption by the household. Stock referred to the produce which could not be disbursed otherwise during the reference period. Wastage referred mainly to the crop wasted on the field just before the harvest.

1.13 Other harvests : Information on the other harvests is presented for the first time. It may be mentioned that the 'other harvests' belong to a separate class of crops which are of special nature. The chief characteristics of these crops are that once the plant is sown it takes some years to get fruits and once it starts giving fruits it continues to bear fruits for a number of years. Mangoes, citrus, banana, coconuts, betel leaves, bamboo etc. form the list of other harvests. Most of these crops bear fruits for all the year round and few in some seasons only. The contribution of value of these crops to the total National Income, though not very high, cannot be ignored. Both the value and cost of production of other harvests are presented.

1.14 Cost of cultivation of major and minor crops : Twentynine crops are selected for presenting the cost of cultivation of major and minor crops. These crops are the same as were presented in three parts of the Report No.32. The results presented are also more or less on the same lines. The concepts and definitions followed here also remained the same. The items presented are as follows :-

- i) material cost
- ii) labour cost
- iii) gross value of production

1.15 Material costs : The material costs covered seed, manure and water charges utilised for different crops. The quantity and value of these items utilised per acre of area harvested are given here by different crops. In presenting the quantities it may be stated that both home supply and purchased quantities were taken into consideration. The value of quantities supplied from home was imputed at the market rate during the reference period. About water charges, it may be noted that these charges referred to the payment made to purchase water (such as canal charges or tube well charges etc.). These did not include labour charges involved in lifting water or changing direction of the water in field etc.

1.16 Labour costs : Data for human and animal labour utilised for the cultivation of different crops were collected by the following agricultural operation :-

- i) soil preparation (operation I)
- ii) sowing, transplanting and other growing operations (operation II)
- iii) harvesting, transporting, threshing and storing (operation III)

The extent of labour days utilised and the labour charges are both given. It may be mentioned that the labour days were not defined by number of hours of work but it was left to be decided on the basis of local practice for different agricultural operations. The labour days were classified under three heads, (i) household, (ii) hired, (iii) exchanged. The value of hired and exchanged labour days was imputed at the hired labour charges per day during the reference period. In earlier surveys (fifth to seventh rounds) the data for the exchanged labour days were not collected separately. There, the exchanged labour was classified under hired labour.

1.17 Balance of value of production and some important ratios : The balance of value of production is the actual balance left after deducting material (seed, manure, water charges) and labour costs (animal labour only) from the gross value of production. Estimates of balance of value of production of different crops are presented so that the comparative study of these estimates with the previous NSS results (5th-7th round) could be made. These estimates are presented separately for major and minor crops and other harvests. The results for major and minor crops are available for per acre area harvested for different crops.

1.18 The report is divided into two chapters, the second chapter deals briefly with the summary of results based on utilisation of land possessed by the household, agricultural implements and equipments and other expenses on miscellaneous items, production and disbursement of crop, cost of cultivation of major and minor crops and other harvests (such as, mangoes, citrus fruits, nuts etc) and final balance of value of production.

1.19 Five appendices are attached to the report, the first of which gives statistical tables with description on tables and second gives briefly the design of the survey and procedure of estimation. The validity of the results is discussed in Appendix III. Extracts from instruction to the field workers for collecting data have been given in Appendix IV. The facsimile of the schedule of enquiry is given in Appendix IV.

AR.

CHAPTER TWO

Summary of Results

2.1.0 General particulars of households and utilisation of land

possessed by households: It is found that in India about 32 per cent of the households did not possess cultivated land during July 1955 - June 1956. The households possessing cultivated land were about 68 per cent. Table (1) gives the percentage distribution of households and persons by agricultural holding class 1 and 2 in rural areas in India. (As already explained in Chapter One, agricultural holding class 1 refers to households not possessing cultivated land while agricultural holding class 2 refers to households possessing cultivated land.)

Table (1) : Percentage of households and persons by agricultural holding class 1 and 2 in rural areas: All India (NSS eleventh round)

agricultural holding class	households	persons
(1)	(2)	(3)
1	32	24
2	68	76
total	100	100

Thus, about little less than one fourth of rural population did not possess any cultivated land. Persons possessing and not possessing cultivated land were in the ratio of about 3 : 1; for households this ratio was about 2 : 1. Number of persons per household possessing and not possessing cultivated land were 5 and 4 respectively.

2.2.1 Particulars of households possessing cultivated land (agricultural holding class 2) : About 5 acres of land per household was possessed by the household belonging to class 2. About 4 acres per household or 85% of total land possessed by the households was owned. The total land leased-in per household was 0.77 acres or 15% of the total land possessed by the household (about 9 per cent was leased in on share cropping and about 6 per cent was leased in on other terms).

2.2.2 The total area cultivated under all the four seasons was 4.69 acres per household. Maximum area (about 66% to the total) was cultivated during Kharif season. The area cultivated in different seasons varied from

2 per cent in summer to 38 per cent in Kharif (winter). During the early and later Kharif seasons, percentage of area cultivated to the total was 29 and 38 respectively. About 31 per cent of area was cultivated during rabi season while during the summer season area cultivated was least (about 2%). The net area cultivated was 4.15 acres per household and the area cultivated more than once was 0.54 acres per household or 12 per cent of the total area cultivated. So, the percentage of net area cultivated was about 88% to the total area.

2.2.3 Total land used was 5.69 acres per household and out of this 4.69 acres (about 82%) was under cultivation. Other cultivable area per household was 0.46 acres (about 8 per cent to the total), water areas and areas for house site were 0.39 and 1.00 per cent respectively. The area used for other purposes or area for which no detail record was available was about 8 per cent.

2.2.4 More than 85 per cent of the area utilised under different classification of land was possessed by households belonging to agricultural holding class 2

2.2.5 The total area possessed per person was 1.35 and 0.05 acres for households belonging to agricultural holding class 1 and 2 respectively. The total area possessed by the household for both the agricultural holding class 1 and 2 combined was about 1.03 acre per household.

2.3.1 Agricultural implements and equipments : It is found that the value of agricultural implements and equipments such as plough, harrow, sickles, pumps, tanks, wells, store houses etc. was about Rs.207 per household (as on date of survey during August 1956 - January 1957). Value of plough used was about Rs.6 per household. Value of tanks and wells together and cattle sheds were Rs.38 and Rs.22 respectively. Most of these items refer to households belonging to agricultural holding class 2.

2.3.2 The cost of materials and hired labour charges incurred for construction and improvements, purchase, sale, breakage and repair and maintenance of agricultural implements show that per household expenditure on these items was about Rs.15 during the reference period July 1955-June 1956. Constructions, improvements and reclamation including cost of materials and hired labour charges accounted for Rs.3.48 per household. Repair and maintenance charges accounted for Rs.5.29 per household.

Purchase and sale of items per household was about Rs.3 and 2 respectively. Hire charges were only Rs.0.89 per household. Table (2) gives per household estimates of agricultural implements and equipments and other expenses for agricultural holding class 1 and 2 combined at All India level in rural areas.

Table (2) : Per household estimates of agricultural implements and equipments and other expenses for agricultural holding class 1 and 2 combined : All India NSS Eleventh Round

items	value (in Rs.)
1. value of agricultural implements and equipments as on date of survey	184.71
2. construction, improvements, and reclamation	3.48
3. purchase	2.91
4. sale	1.90
5. breakage	0.89
6. repair and maintenance	5.29
7. hire charges	0.89
sub-total (2-7)	15.03
8. Expenses on other items	3.66
(i) interest on loan	1.92
(ii) litigation	1.43
sub-total 2 (total expenses on other items)	7.01
total	
(i) sample villages	1848
(ii) sample households	7275

2.3.3 The other expenses on miscellaneous items such as ropes and cordages, insecticides, transport service marketing, betterment levy, interest on loan, litigation etc. show that per household expenditure on these items during the reference period was about Rs.7. Out of this Rs.3.35 were spent on interest on loan (Rs.1.92) and litigation (Rs.1.43). It may be pointed out again that a very large proportion was spent by households belonging to agricultural holding class 2.

Thus the overhead costs per household from agricultural implements and equipments and other expenses on miscellaneous items accounted for Rs.22 approximately. It was not possible to allocate overhead costs to different crops.

It may be noted that the proportion of household consumption was more in case of food crops than in case of other crops; on the other hand, the proportion of crop sold was comparatively very low for food crops. While the picture was exactly reverse in case of cash crops.

2.5.1 Gross value of production : The crops for which more than 100 rupees per acre could be realized were paddy (Rs.122), barley (Rs.104), jute (Rs.215), sugarcane (Rs.305), potato (Rs.433), spices (Rs.211) and tobacco (Rs.271). The value of straw for paddy, wheat, jowar, bajra, barley & maize was more than Rs.10 per acre. The value of straw for oilseeds was least.

It may be mentioned that value of straw for food crops was higher than for non-food crops.

2.5.2 Cost of cultivation major and minor crops : The balance of value of production is given in table (5). It is found from this table that this balance was highest (Rs.236.67) for potato. The other crops for which the balance was more than Rs.100 were sugarcane (Rs.158), spices (Rs.133), jute (Rs.162) and tobacco (Rs.203). Amongst the food crops the highest balance was for paddy (Rs.78.82). Except for the crops mentioned above the balance was very low (about 10 to 30 rupees per acre).

The details of balance of value of production show that the expenses on animal labour were maximum for almost all the crops. About 20 to 40 per cent of the total cost incurred was only on the animal labour utilised for cultivation for most of the crops. The least charges were incurred for water. The water charge was less than Re.1.00 for all crops except for potato, tobacco and sugarcane where the charge was about Rs.6 per acre in each case.

2.5.3 The balance of value of production of all the crops combined was about 50 per cent of the gross value of production; the largest expenditure being on animal labour (about 33 per cent). The gross value of production per acre came to about Rs.80 and out of this about Rs.40 per acre was left as balance of value of production. The maximum cost was incurred on animal labour (about Rs.26 per acre) and the least was on water charges (less than rupee 1 per acre).

Table (5) : Balance of value of production for all crops combined per acre : All-India.

(NSS Eleventh round)

sample villages : 1848

sample households: 5495

items	value per acre (in Rs.)	percentage
(1)	(2)	(3)
1. gross value of production	79.94	100.00
2. cost of seed	7.48	9.36
3. cost of manure	5.57	6.97
4. water charges	0.46	0.58
5. animal labour cost	26.00	32.52
6. total input	39.51	49.43
7. balance of value of production	40.43	50.57

2.5.4 Cost of cultivation and balance of value of production of other harvests : The balance of value of production from all the items of other harvests was about Rs.34 per household. The value of crops and corresponding total input were Rs.41 and Rs.7 respectively. The utilisation of material and animal labour cost per household were Rs.5 and Rs.3 respectively.

The highest balance of value of production of the harvests was from fodder and grass i.e., Rs.17 per household (or 49 per cent to the total). Fruits contributed about Rs.5 (or 16 per cent to the total). The lowest percentage of balance of value of ^{other harvests was} ~~of~~ from soft wood and toddy (0.10). The percentage value of wood including fuel wood, timber, soft wood was about 11 per cent.

2.5.5 Analysing the balance of value as percentage value of production it is found that mangoes contributed about 99 per cent amongst the items of fruits. The balance for soft wood and toddy was cent percent and for other items it varied from 62 to 99 per cent. The lowest percentage of balance ^{was} was from betel leaves, about 62 per cent and the next ~~to~~ banana, about 65 per cent.

2.5.6 A comparative study of balance of value of production for major and minor crops and other harvests can be done from Table (6). It is revealed from the table that balance of value of production both per household for major and minor crops was almost about 5 times that of other harvests. But, on the other hand percentage of value of production for other harvests was about 32 per cent more than the major and minor crops. This is

because of the fact that both material and labour cost for other harvests are much less than the major and minor crops.

Balance of value of production for all the crops (considered taken together) was about 54 per cent of the gross value. Per household estimates was Rs.306.85

Table (6) : Per household balance of value of production, of crops and other harvests; actual and percentage to total : All-India

(NSS Eleventh round)
sample villages = 1848 sample households = 7275

items	major and minor crops		other harvests		all crops (total)	
	per household (Rs.)	per-cent-age	per household (Rs.)	per-cent-age	per household (Rs.)	per-cent-age
(1)	(2)	(3)	(4)	(5)	(6)	(7)
1. gross value of production	512.54	100.00	58.25	100.00	570.79	100.00
2. cost and seed	47.93	9.35	x	x	x	x
3. cost of manure	35.73	6.97	x	x	x	x
4. water charges	2.94	0.57	x	x	x	x
5. total material cost	86.60	16.89	6.67	11.45	93.27	16.34
6. animal labour cost	166.68	32.52	3.99	6.85	170.67	29.90
7. total input	253.28	49.41	10.66	18.30	263.94	46.24
8. balance of value of production	259.26	50.59	47.59	81.70	306.85	53.76

Comparing the cost of production of other harvests it is found that labour cost was much more than the material cost; and comparing the two types of labour it is found that human labour cost is much more than the cost of animal labour.

Appendix I

Description of Tables

1. Six sets of tables are included in this Appendix. Each set refers to the subject covered under different aspects of agriculture. The subjects covered and ~~the~~ reference to the table numbers are given below.

<u>subject</u>	<u>table no.</u>
1. General particulars of land utilisation	(1.4) to (1.14)
2. Agricultural Implements and equipments and other expenses	(1.15) to (1.20)
3. Production and disbursement of crops	(1.21) to (1.23)
4. Cost of cultivation of crops	(1.24) to (1.37)
5. Estimates of all crops combined	(1.38) to (1.41)
6. Balance of value of crops and other harvests	(1.42) to (1.48)

2. Tables on Land utilisation, agricultural implements and other harvests refer to both agricultural holding classes 1 and 2 and combined while tables on cost of cultivation and balance of value of production of crops refer to agricultural holding class 2 only.

3. Tables(1.21) to (1.41) on production and cost of cultivation of crops refer to per acre area harvested.

4. Value items are given in rupees while quantity items are given in standard seers or maunds as the case may be. For instance, seeds (cols. 2-4 of table 1.24) and chemical manure (col.(2), table 1.26) are given in standard seers and other manures(in cols.(2-5) of table 1.26) and quantity of crop produced (cols.2-3, table 1.21) are given in standard maunds.

The standard units are noted at the top of the table. Both quantity and value estimates are given upto 2 places of decimals.

5. Value was calculated at the market rate prevailing during the reference period. In case, the item was purchased the purchase price was taken for evaluating the quantity supplied from home, if any. Water charges are given in rupees. Water charges excludes human and animal labour charges. These are the charges which are exclusively paid for water, i.e. for instance, canal charges.
6. Tables (1.1) to (1.3) given at state level refer only to States which existed just after States reorganisation in 1956. Zonal estimates refer

to Zones the composition of which is given below :

	<u>zone</u>	<u>states included</u>
1.	Central	Uttar Pradesh, Madhya Pradesh
2.	Eastern	Bihar, West Bengal, Orissa, Assam, Manipur, Tripura
3.	Southern	Andhra Pradesh, Madras, Kerala
4.	Western	Bombay, Mysore and Coorg.
5.	Northern	Rajasthan, Punjab, Delhi, Himachal Pradesh, Jammu and Kashmir.

7. Estimates given in Tables (1.4) to (1.48) are at All-India level only.

8. Tables (1.29) to (1.37) give human and animal labour days and charges by agricultural operations for different crops. The actual value and the percentage to the total is also given for most of the items. The labour days are given in whole number while the labour charges are given in rupees upto 2 places of decimals.

9. The agricultural operations dealt in tables (1.29) to (1.37) for human /
for animal labour
and tables (1.33) to (1.35) are listed below.

1. Soil operation (operation I)
2. Sowing, transplanting and other growing operations (operation II)
3. Harvesting, transplanting, threshing and storing (operation III)

10. The names of crops and other harvest dealt in the tables are given below :

(a) crops

- | | | | |
|-----------|-------------------|----------------------|---------------------|
| 1. paddy | 9. small millets | 16. moong | 22. sesamum |
| 2. wheat | 10. groundnut | 17. masur | 23. linseed |
| 3. jowar | 11. cotton | 18. other pulses | 24. castor |
| 4. bajra | 12. jute | 19. total pulses | 25. other oil seeds |
| 5. barley | 13. minor cereals | 20. sugarcane | 26. total oil seeds |
| 6. maize | 14. arhar | 21. rape and mustard | 27. potato |
| 7. ragi | 15. urdh | | 28. spices |
| 8. gram | | | 29. tobacco |

(b) other harvests

- | | |
|-----------------|-----------------|
| 1. mango | 11. other reeds |
| 2. citrus | 12. fuel weed |
| 3. bananas | 13. timber |
| 4. other fruits | 14. soft wood |
| 5. coconuts | 15. fodder |
| 6. arcanuts | 16. grass |
| 7. other nuts | 17. flower |
| 8. betal nuts | 18. toddy |
| 9. bamboo | 19. others |
| 10. cane, hogla | |

List of Tables

General particulars of household and utilisation of land

	<u>Page</u>
Table (1.1) : Percentage distribution of households by states and agricultural holding classes : (a) base : each agricultural holding class. (b) base : each state.	20
(1.2) : Percentage distribution of number of persons by states and agricultural holding classes : (a) base : each agricultural holding class. (b) base : each state.	21
(1.3) : Average household size by states and agricultural holding classes.	22
(1.4) : Per household and percentage distribution of area possessed, cultivated and utilised for different purposes for agricultural holding class 1 and 2 combined : All-India.	23
(1.5) : Percentage distribution of area utilised by agricultural holding classes : All-India	24
(1.6) : Per household and per person area utilised for different purposes : All-India.	25
(1.7) : Percentage distribution of households (possessing cultivated land) by hand possessed and household size classes : All-India. base : each household size class	26
(1.8) : Percentage distribution of households (possessing cultivated land) by land possessed and household size classes : All-India. base : each land possessed class.	27
(1.9) : Percentage distribution of households (possessing cultivated land) by land possessed and industry-occupation group : All-India. (a) base : each industry occupation group. (b) base : each land possessed class.	28
(1.10) : Percentage distribution of household (possessing cultivated land) by land possessed and monthly household expenditure levels : All-India. base : each expenditure level.	29
(1.11) : Percentage distribution of households (possessing cultivated land) by land possessed and monthly household expenditure levels : All-India. base : each land possessed class.	30
(1.12) : Percentage distribution of households (possessing cultivated land) by land possessed and monthly per capita expenditure classes : All-India. base : each per capita expenditure class.	31

	<u>Page</u>
Table (1.13) : Percentage distribution of households (possessing cultivated land) by land possessed and monthly per capita expenditure classes : All-India. base : each land possessed class.	32

(1.14) : Average household size, per household expenditure and per capita expenditure of households (possessing cultivated land) by size of land possessed : All-India.	33
---	----

Agricultural implements and equipments and other harvests.

Table (1.15) : Value of implements and equipments per household by items : actual and percentage to total : All-India.	34
--	----

(1.16) : Percentage distribution of value of implements and equipments by agricultural holding classes : All-India.	34
---	----

(1.17) : Expenditure on implements and equipments per household by items : actual and percentage to total : All-India.	35
--	----

(1.18) : Percentage distribution of expenditure on implements and equipments by agricultural holding classes : All-India.	35
---	----

(1.19) : Other expenses (miscellaneous) per household by items : actual and percentage to total : All-India.	36
--	----

(1.20) : Percentage distribution of other expenses by agricultural holding classes : All-India.	36
---	----

Production and disbursement of crops

Table (1.21) : Production of quantity of crop and straw per acre and ratio of straw to crop : All-India.	37
--	----

(1.22) : Value of crop and straw per acre : actual and percentage to total : All-India.	38
---	----

(1.23) : Percentage distribution of disbursement of crops : All-India.	39
--	----

Cost of cultivation of crops and other harvests.

Table (1.24) : Quantity of seed used per acre and percentage distribution by source of supply : All-India.	40
--	----

(1.25) : Value of seed used per acre by source of supply : All-India.	41
---	----

(1.26) : Quantity of chemical and other types of manures used per acre by source of supply: All-India.	42
--	----

(1.27) : Percentage distribution of quantity of other manure used by source of supply : All-India.	43
--	----

(1.28) : Value of manure used per acre by type : actual and percentage to total and water charges per acre : All-India.	44
---	----

	<u>Page</u>
Table (1.29) : Total number and percentage distribution of human labour days utilised per acre for different agricultural operations : All-India.	45
(1.30) : Total number and percentage distribution of household, hired and exchanged human labour days utilised per acre for all agricultural operations : All-India.	46
(1.31) : Total charges/and percentage distribution of human labour charges utilised per acre for different agricultural operations : All-India. (in Rs.0.00)	47
(1.32) : Total human labour charges (in Rs.0.00) utilised per acre for household, hired and exchanged labour for all agricultural operations : All-India.	48
(1.33) : Total number and percentage distribution of animal labour days utilised per acre by agricultural operations : All-India.	49
(1.34) : Total number and percentage distribution of household, hired and exchanged animal labour days utilised per acre for all agricultural operations : All-India.	50
(1.35) : Total and percentage distribution of animal labour charges utilised for different agricultural operations: All-India.	51
(1.36) : Total household, hired and exchanged animal labour charges (in Rs.0.00) utilised per acre for all agricultural operations : All-India.	52
(1.37) : Human and animal labour charges (in Rs.0.00) per day by agricultural operations : All-India.	53

Estimates for all crops combined

Table (1.38) : Quantity and value of crop and straw per acre (for all crops combined) : All-India.	54
(1.39) : Utilisation of seed, manure and water charges (for all crops combined) : All-India.	54
(1.40) : Animal and human labour days and charges for different agricultural operations (for all crops combined): All-India.	55
(1.41) : Total number of animal and human labour days and charges per acre : actual and total percentage to total by source of supply : All-India.	55

Balance of value of production of crops and other harvests.

Table (1.42) : Balance of value of production of crops per acre : All-India.	56
(1.43) : Percentage distribution of balance of value of production of crops : All-India.	57
(1.44) : Value and cost of production of other harvests per household : All-India.	58

	<u>Page</u>
Table (1.45) : Percentage distribution of value and cost of other harvests : All-India.	59
(1.46) : Percentage distribution of balance of value of production of other harvests : All-India.	60
(1.47) : Per household, per person and percentage distribution of balance of value of production of other harvests.	61
(1.48) : Some ratio estimates : area harvested as percentage of area sown, production of crop per acre area harvested, value per maund of crops and straw product.	62

National Sample Survey, Eleventh round : August 1956 - February 1957

Table (1.1) : Percentage distribution of households by states and agricultural holding classes.

(reference period : August 1955 - February 1956)

zone and state (1)	(a) base: each class a.h. agricultural holding class			(b) base: each state agricultural holding class		
	1	2	1+2	1	2	1+2
	(2)	(3)	(4)	(5)	(6)	(7)
Uttar Pradesh	12.75	20.27	17.90	22.45	77.55	100.00
Madhya Pradesh	7.66	8.50	8.24	29.31	70.69	100.00
Central zone	20.41	28.77	26.14	24.61	75.39	100.00
Bihar	10.25	13.19	12.26	26.35	73.65	100.00
West Bengal	8.48	6.25	6.95	38.44	61.56	100.00
Orissa	4.25	5.25	4.94	27.14	72.86	100.00
Assam, Manipur, Tripura	4.45	3.43	3.75	37.40	62.60	100.00
Eastern zone	27.43	28.12	27.90	30.99	69.01	100.00
Andhra Pradesh	10.57	7.66	8.58	38.86	61.14	100.00
Madras	10.49	6.95	8.06	40.99	59.01	100.00
Kerala	4.16	2.95	3.33	39.40	60.60	100.00
Southern zone	25.22	17.56	19.97	39.81	60.19	100.00
Bombay	12.45	9.81	10.64	36.86	63.14	100.00
Mysore and Coorg	5.89	5.04	5.31	34.99	65.01	100.00
Western zone	18.34	14.85	15.95	36.24	63.76	100.00
Rajasthan	2.05	5.46	4.39	14.72	85.28	100.00
Punjab, Delhi, H. Pradesh	6.28	4.07	4.77	41.57	58.43	100.00
Jammu & Kashmir	0.27	1.17	0.88	9.48	90.52	100.00
Northern zone	8.60	10.70	10.04	27.01	72.99	100.00
All India	100.00	100.00	100.00	31.52	68.48	100.00
(i) sample villages	-	-	1848			
(ii) sample households	1780	5495	7275			

1. agricultural holding class 1 : households not possessing cultivated land.
2. " " " 2 : households possessing cultivated land.

National Sample Survey, Eleventh Round : August 1956 - February 1957

Table (1.2) : Percentage distribution of number of persons by states and agricultural holding classes.

(reference period : August 1956 - February 1956)

zone and state	percentage distribution					
	(a) base : each class			(b) base : each state		
	agricultural holding class			agricultural holding class		
	1	2	1+2	1	2	1+2
(1)	(2)	(3)	(4)	(5)	(6)	(7)
Uttar Pradesh	13.06	19.31	17.79	17.92	82.08	100.00
Madhya Pradesh	7.65	8.25	8.10	23.06	76.94	100.00
Central zone	20.71	27.56	25.89	19.53	80.47	100.00
Bihar	9.86	14.03	13.02	18.49	81.51	100.00
West Bengal	8.07	6.30	6.73	29.26	70.74	100.00
Orissa	3.75	5.14	4.80	19.09	80.91	100.00
Assam, Manipur, Tripura	4.19	3.08	3.35	30.50	69.50	100.00
Eastern zone	25.87	28.55	27.90	22.64	77.36	100.00
Andhra Pradesh	9.98	7.62	8.20	29.72	70.28	100.00
Madras	10.57	6.49	7.48	34.47	65.53	100.00
Kerala	4.70	3.33	3.66	31.31	68.69	100.00
Southern zone	25.25	17.44	19.34	31.86	68.14	100.00
Bombay	13.19	10.14	10.87	29.60	70.40	100.00
Mysore & Coorg	5.36	5.72	5.63	23.24	76.76	100.00
Western zone	18.55	15.84	16.50	27.43	72.57	100.00
Rajasthan	1.95	5.39	4.55	10.44	89.56	100.00
Punjab, Delhi, H. Pradesh	7.52	4.48	5.23	35.15	64.85	100.00
Jammu & Kashmir	0.15	0.74	0.59	5.96	94.04	100.00
Northern zone	9.62	10.61	10.37	22.64	77.36	100.00
All India	100.00	100.00	100.00	24.41	75.59	100.00
(i) sample villages	-	-	1848			
(ii) sample households	1780	5495	7275			

National Sample Survey, Eleventh Round : August 1956 - February 1957

Table (1.3) : Average household size by states and agricultural holding classes.

(reference period : August 1956 - February 1957)

zone and state (1)	agricultural holding		
	1 (2)	2 (3)	1+2 (4)
Uttar Pradesh	3.89	5.16	4.88
Madhya Pradesh	3.80	5.25	4.83
Central zone	3.86	5.19	4.86
Bihar	3.66	5.77	5.21
West Bengal	3.62	5.46	4.75
Orissa	3.36	5.30	4.77
Assam, Manipur, Tripura	3.58	4.87	4.39
Eastern zone	3.58	5.50	4.91
Andhra Pradesh	3.59	5.39	4.69
Madras	3.83	5.06	4.55
Kerala	4.30	6.13	5.41
Southern zone	3.81	5.38	4.76
Bombay	4.03	5.59	5.01
Mysore & Coorg	3.46	6.15	5.21
Western zone	3.84	5.78	5.08
Rajasthan	3.61	5.35	5.09
Punjab, Delhi & H. Pradesh	4.55	5.97	5.38
Jammu & Kashmir	2.07	3.42	3.30
Northern Zone	4.25	5.38	5.07
All-India	3.80	5.42	4.91
(i) sample villages	-	-	1848
(ii) sample households	1780	5495	7275

National Sample Survey, Eleventh round : August 1956 - February 1957

Table (1.4) : Per household and percentage distribution of area possessed cultivated and utilised for different purposes : All-India.

(reference period : July, 1955 - June 1956)

sample villages : 1848

sample households : 7275

source of distribution	per household	percentage
(1)	(2)	(3)
(a) percentage of land by type of possession		
owned and possessed	4.28	84.79
leased in for share cropping	0.48	9.42
leased in on other terms	0.29	5.79
total	5.05	100.00
percentage of area cultivated by seasons		
kharif - autumn, 1955	1.34	28.65
kharif - winter, 1955-56	1.78	37.85
rabi - spring, 1956	1.47	31.31
summer - 1956	0.10	2.19
total	4.69	100.00
net cultivated area	4.15	88.47
area cultivated more than once	0.54	11.53
(c) area cultivated and other areas by seasons		
area cultivated - Kharif - autumn 1955	1.34	23.61
" " - Kharif - winter 1955-56	1.78	31.21
" " - rabi - spring 1956	1.47	25.81
" " - summer 1956	0.10	1.80
area cultivated total	4.69	82.43
other cultivable areas	0.46	8.03
water areas	0.02	0.39
house site	0.06	1.00
others	0.46	8.15
total	5.69	100.00
(d) area by sources		
net cultivated area	4.15	80.58
other cultivable areas	0.46	8.88
water areas	0.02	0.43
house site	0.06	1.11
others	0.46	9.00
total	5.15	100.00

* for agricultural holding class 1 + 2 combined.

National Sample Survey, Eleventh round : August 1956 - February 1957

Table (1.5) : Percentage distribution of area utilised by agricultural holding classes : All-India
(reference period : July 1955 - June 1956)

source	percentage		
	agricultural holding class		
	1	2	1+2
(1)	(2)	(3)	(4)
1. owned & possessed	0.51	99.49	100.00
2. leased in for share cropping	0.82	99.18	100.00
3. leased in on other terms	11.98	88.02	100.00
4. total land	1.21	98.79	100.00
5. other cultivable areas	14.99	85.01	100.00
6. water areas	0.47	99.53	100.00
7. house site	13.03	86.97	100.00
8. others	3.35	96.65	100.00
(i) sample villages			1848
(ii) sample households	1780	5495	7275

sp. 80.58 4.15
88.3 31.0
0.47 30.0
11.98 30.0
0.82 30.0
0.51 30.0

National Sample Survey, Eleventh Round : August 1956 - February 1957

Table (1.6) : Per household and per person area utilised for different purposes : All India
(reference period : July 1955 - June 1956)

source	Acres					
	per household			per person		
	agricultural holding class			agricultural holding class		
	1	2	1+2	1	2	1+2
(1)	(2)	(3)	(4)	(5)	(6)	(7)
1. owned and possessed	0.07	6.21	4.28	0.02	1.15	0.87
2. leased in for share cropping	0.01	0.69	0.48	0.00	0.13	0.10
3. leased in on other terms	0.11	0.38	0.29	0.03	0.07	0.06
4. total land	0.19	7.28	5.05	0.05	1.35	1.03
5. cultivated - kharif - autumn	-	-	1.34	-	-	0.27
6. cultivated - kharif - winter	-	-	1.78	-	-	0.36
7. cultivated - rabi - spring	-	-	1.47	-	-	0.30
8. cultivated - summer	-	-	0.10	-	-	0.02
9. cultivated - total	-	-	4.69	-	-	0.95
10. cultivated - net total	-	-	4.15	-	-	0.85
11. other cultivable areas	0.22	0.57	0.46	0.06	0.10	0.09
12. water areas	0.00	0.03	0.02	0.00	0.01	0.00
13. house site	0.02	0.07	0.06	0.01	0.01	0.01
14. others	0.05	0.65	0.46	0.01	0.12	0.09
15. total land usable (10-14)	-	-	5.15	-	-	1.04
(i) sample villages	-	-	1848			
(ii) sample households	1780	5495	7275			

sp.

National Sample Survey, Eleventh round : August 1956 - February 1957

Table (1.7) : Percentage distribution of households (possessing cultivated land) by land possessed and household size classes : All India.

(reference period : July 1955 - June 1956)

sample villages : 1848

(base : each household size class)

sample households : 5495

land possessed in acres	household size											
	01	02	03	04	05	06	07	08	9-11	12-14	15 and above	total
(1)	(2)	(3)	(4)	(5)	(6)	(7)	(8)	(9)	(10)	(11)	(12)	(13)
0.00	2.41	1.11	0.05	-	-	-	-	0.12	0.17	-	-	0.21
0.01 - 0.49	14.81	14.83	11.25	9.01	8.79	5.29	4.79	3.82	2.16	1.93	3.07	7.75
0.50 - 0.99	13.15	11.72	10.87	7.06	6.50	5.18	4.96	8.55	3.71	1.79	3.07	7.32
1.00 - 1.49	12.50	9.50	10.51	6.97	8.49	7.59	6.13	4.57	2.78	3.17	1.84	7.37
1.50 - 2.49	13.70	19.72	15.53	17.66	15.76	12.51	11.30	9.92	5.08	7.71	3.69	13.84
2.50 - 3.49	8.70	12.53	10.71	13.41	13.34	10.74	10.32	9.84	6.87	7.30	3.69	11.17
3.50 - 4.99	13.15	11.03	11.12	9.41	10.89	13.23	17.99	9.92	13.32	11.57	5.74	11.79
5.00 - 7.49	8.15	7.06	12.07	13.87	12.79	14.11	12.73	17.13	14.78	10.06	11.27	13.02
7.50 - 9.99	5.00	3.86	6.02	7.18	5.33	7.46	8.20	6.36	9.72	5.10	11.68	6.66
10.00 - 14.99	3.89	4.03	4.00	7.36	6.76	10.89	11.04	11.26	13.63	20.39	18.86	8.49
15.00 - 19.99	1.67	2.05	2.55	3.32	5.26	4.54	4.08	5.37	10.61	6.47	7.17	4.40
20.00 - 29.99	1.94	1.67	2.24	2.49	3.18	3.94	5.68	6.70	7.35	9.78	18.24	4.05
30.00 - 49.99	0.74	0.53	1.55	1.56	2.20	3.09	2.01	4.73	6.18	7.02	6.56	2.59
50.00 - 99.99	-	0.36	0.54	0.69	0.60	0.80	0.68	1.32	3.16	5.37	3.69	0.96
100.00 & above	0.19	-	0.99	0.01	0.11	0.63	0.09	0.39	0.48	2.34	1.43	0.38
total	100.00	100.00	100.00	100.00	100.00	100.00	100.00	100.00	100.00	100.00	100.00	100.00

sp.

National Sample Survey, Eleventh Round : August 1956-February 1957

Table (1.8) : Percentage distribution of households (possessing cultivated land by land possessed and household size classes : All-India (reference period : July 1955-June 1956).

(base: each land possessed class)

land possessed in acres	sample households : 5495											total
	household size											
	1	2	3	4	5	6	7	8	9-11	12-14	15 & above	
(1)	(2)	(3)	(4)	(5)	(6)	(7)	(8)	(9)	(10)	(11)	(12)	(13)
0.00	32.50	50.00	3.75	-	-	-	-	7.50	6.25	-	-	100.00
0.01 - 0.49	4.51	15.05	19.28	19.87	17.47	9.70	6.31	5.21	1.78	0.40	0.42	100.00
0.50 - 0.99	4.23	12.58	19.71	16.46	13.65	10.05	6.92	12.34	3.22	0.39	0.45	100.00
1.00 - 1.49	4.00	10.14	18.94	16.15	17.75	14.61	8.51	6.55	2.40	0.68	0.27	100.00
1.50 - 2.49	2.34	11.20	14.89	21.79	17.53	12.83	8.35	7.57	2.33	0.89	0.28	100.00
2.50 - 3.49	1.84	8.82	12.73	20.51	18.40	13.65	9.44	9.31	3.91	1.04	0.35	100.00
3.50 - 4.99	2.63	7.35	12.52	13.63	14.22	15.92	15.59	8.89	7.18	1.55	0.52	100.00
5.00 - 7.49	1.48	4.26	12.31	18.20	15.13	15.38	9.99	13.90	7.21	1.22	0.92	100.00
7.50 - 9.99	1.77	4.55	12.00	18.42	12.32	15.90	12.59	10.09	9.28	1.21	1.87	100.00
10.00 - 14.99	1.08	3.73	6.25	14.81	12.26	18.20	13.29	14.01	10.21	3.80	2.36	100.00
15.00 - 19.99	0.89	3.67	7.69	12.90	18.41	14.64	9.48	12.90	15.34	2.34	1.74	100.00
20.00 - 29.99	1.13	3.23	7.33	10.51	12.07	13.79	14.33	17.46	11.53	3.82	4.80	100.00
30.00 - 49.99	0.68	1.60	7.93	10.30	13.08	16.96	7.93	19.33	15.19	4.31	2.69	100.00
50.00 - 99.99	-	2.96	7.52	12.30	9.57	11.84	7.29	14.58	20.95	8.89	4.10	100.00
100.00 & above	1.16	-	34.68	0.58	4.63	23.70	2.31	10.98	8.09	9.82	4.05	100.00
total	2.36	7.86	13.28	17.09	15.40	14.20	10.22	10.57	6.37	1.59	1.06	100.00

ss.

National Sample Survey, Eleventh Round : August 1956-February 1957

Table (1.9) : Percentage distribution of households (possessing cultivated land) by land possessed and industry occupation, All India. (reference period : July 1955 - June 1956)

sample villages : 1848

sample households : 5495

land possessed in acres	industry occupation = 100			land possessed in acres = 100		
	agriculture, livestock, forest, fishing and hunting	other occupations	total	agriculture, livestock, fish- forestry, fish- ing and hunting	other occupations	total
(1)	(2)	(3)	(4)	(5)	(6)	(7)
0.00	0.20	0.34	0.21	85.71	14.29	100.00
0.01 - 0.49	6.01	25.24	7.75	70.60	29.40	100.00
0.50 - 0.99	6.24	18.23	7.32	77.55	22.45	100.00
1.00 - 1.49	6.80	13.10	7.37	83.97	16.03	100.00
1.50 - 2.49	13.54	16.00	13.84	88.99	11.01	100.00
2.50 - 3.49	11.26	10.19	11.17	91.77	8.23	100.00
3.50 - 4.99	12.34	6.25	11.79	95.22	4.78	100.00
5.00 - 7.49	13.99	3.27	13.02	97.74	2.26	100.00
7.50 - 9.99	7.08	2.49	6.66	96.62	3.38	100.00
10.00 - 14.99	9.08	2.54	8.49	97.30	2.70	100.00
15.00 - 19.99	4.78	0.56	4.40	98.86	1.14	100.00
20.00 - 29.99	4.42	0.31	4.05	99.30	0.70	100.00
30.00 - 49.99	2.82	0.27	2.59	99.07	0.93	100.00
50.00 - 99.99	1.02	0.31	0.96	97.04	2.96	100.00
100.00 & above	0.42	-	0.38	100.00	-	100.00
total	100.00	100.00	100.00	90.98	9.02	100.00

(a) base: each industry occupation group

(b) base: each land possessed class

ss.

National Sample Survey, Eleventh Round : August 1956-February 1957

Table (1.10) : Percentage distribution of households (possessing cultivated land) by land possessed and expenditure levels :
All India (reference period: July 1955-June 1956).
(base: each expenditure level)

land possessed in acres	expenditure level in rupees						total
	0-25	26-50	51-100	101-200	201 & above		
	(1)	(2)	(3)	(4)	(5)	(6)	
0.00	0.91	0.11	-	-	-	0.21	
0.01 - 0.49	17.77	11.27	3.62	0.35	2.81	7.75	
0.50 - 0.99	12.82	9.07	6.15	0.90	-	7.32	
1.00 - 1.49	12.46	9.12	5.82	2.14	1.05	7.37	
1.50 - 2.49	18.74	17.36	11.71	4.64	0.53	13.84	
2.50 - 3.49	10.74	13.36	10.39	6.08	6.67	11.17	
3.50 - 4.99	6.51	11.36	13.39	13.83	4.56	11.79	
5.00 - 7.49	7.96	11.42	15.82	14.51	10.00	13.02	
7.50 - 9.99	4.07	5.70	7.55	10.03	5.44	6.66	
10.00 - 14.99	3.55	4.74	11.43	16.07	16.13	8.49	
15.00 - 19.99	2.96	2.95	4.70	9.94	8.60	4.40	
20.00 - 29.99	0.81	2.25	4.76	10.13	14.04	4.05	
30.00 - 49.99	0.36	0.87	3.47	6.86	13.85	2.59	
50.00 - 99.99	0.29	0.09	1.01	3.41	12.11	0.96	
100.00 & above	0.05	0.33	0.18	1.11	4.21	0.38	
total.	100.00	100.00	100.00	100.00	100.00	100.00	

ss.

National Sample Survey, Eleventh round : August 1956 - February 1957.

Table (1.11) Percentage distribution of households (possessing cultivated land) by land possessed and expenditure

level : All-India.

(reference period : July 1955 - June 1966)

(base : each land possessed class)

sample villages : 1848

sample households : 5495

land possessed in acres	expenditure level in Rs.	0-25	26-50	51-100	101-200	201 and above	total
(1)		(2)	(3)	(4)	(5)	(6)	(7)
0.00		66.67	33.33	-	-	-	100.00
0.01 - 0.49		22.31	59.13	17.63	0.48	0.45	100.00
0.51 - 0.99		16.97	50.17	31.54	1.32	-	100.00
1.00 - 1.49		16.47	50.40	29.84	3.11	0.18	100.00
1.50 - 2.49		13.21	51.14	32.00	3.60	0.05	100.00
2.50 - 3.49		9.39	18.81	35.20	5.85	0.75	100.00
3.50 - 4.99		5.35	39.00	42.66	12.51	0.48	100.00
5.00 - 7.49		5.93	35.53	45.69	11.89	0.96	100.00
7.50 - 9.99		5.91	34.57	42.48	16.02	1.02	100.00
10.00 - 14.99		4.06	22.66	50.67	20.23	2.38	100.00
15.00 - 19.99		6.50	27.05	39.99	24.02	2.44	100.00
20.00 - 29.99		1.96	22.55	44.35	26.79	4.35	100.00
30.00 - 49.99		1.35	13.59	50.21	28.18	6.67	100.00
50.00 - 99.99		2.97	3.66	39.59	37.99	15.79	100.00
100.00 & above		1.16	35.84	17.92	31.21	13.87	100.00
total		9.72	40.63	37.69	10.70	1.26	100.00

dd.

National Sample Survey, Eleventh round : August 1956 - February 1957.

Table (1.12) : Percentage distribution of households (possessing cultivated land) by land possessed and per capita expenditure class : All-India.

(reference period : July 1955 - June 1966)

(base : each per capita expenditure class)
sample villages : 1848 sample households : 5495

per capita expenditure in Rs.	0-7	8-10	11-12	13-14	15-17	18-20	21-27	28 & above	total	
land possessed in acres	(1)	(2)	(3)	(4)	(5)	(6)	(7)	(8)	(9)	(10)
0.00	0.09	0.10	-	0.09	-	0.30	1.10	-	0.21	
0.01 - 0.49	13.66	8.94	7.18	3.75	6.65	2.83	4.68	3.32	7.75	
0.50 - 0.99	10.67	8.95	6.63	6.48	3.53	4.00	5.90	7.30	7.32	
1.00 - 1.49	11.01	8.35	8.02	4.07	6.52	4.58	4.21	3.10	7.37	
1.50 - 2.49	16.75	14.66	14.00	14.46	12.00	12.70	8.26	7.00	13.84	
2.50 - 3.49	12.12	11.91	9.70	11.49	12.93	10.71	7.67	5.75	11.17	
3.50 - 4.99	9.00	10.22	14.24	14.43	12.65	15.68	10.53	10.83	11.79	
5.00 - 7.49	9.51	14.23	12.25	15.51	11.61	13.54	16.04	13.04	13.02	
7.50 - 9.99	4.31	6.19	7.68	6.36	8.33	8.43	6.87	8.55	6.66	
10.00 - 14.99	5.27	8.30	7.72	8.88	10.93	9.42	14.06	7.96	8.49	
15.00 - 19.99	3.73	3.54	4.54	3.91	5.05	5.00	5.90	9.87	4.40	
20.00 - 29.99	3.02	2.68	4.17	4.39	3.93	7.31	7.67	7.44	4.05	
30.00 - 49.99	0.86	1.55	2.38	3.52	4.28	4.21	4.25	6.48	2.59	
50.00 - 99.99	-	0.30	1.28	1.19	1.14	0.87	2.19	7.44	0.96	
100.00 & above	-	0.08	0.21	1.47	0.45	0.42	0.67	1.92	0.38	
total	100.00	100.00	100.00	100.00	100.00	100.00	100.00	100.00	100.00	100.00

dd.

National Sample Survey, Eleventh round : August 1956 - February 1957.

Table (1.13) : Percentage distribution of households (possessing cultivated land) by land possessed and per capita expenditure : All-India.

(reference period : July 1955 - June 1956)

(base : each land possessed class)

sample villages = 1848

sample households = 5495

per capita expenditure in Rs.	land possessed in acres	0-7	8-10	11-12	13-14	15-17	18-20	21-27	28 & above	total
		(2)	(3)	(4)	(5)	(6)	(7)	(8)	(9)	(10)
0.00		10.00	23.33	-	6.67	-	16.67	43.33	-	100.00
0.01 - 0.49		25.97	36.13	15.25	4.69	10.83	2.68	3.17	1.28	100.00
0.50 - 0.99		21.35	38.09	14.82	8.51	6.04	4.00	4.21	2.98	100.00
1.00 - 1.49		21.84	35.22	17.79	5.30	11.08	4.53	2.98	1.26	100.00
1.50 - 2.49		17.81	33.15	16.63	10.10	10.93	6.74	3.13	1.51	100.00
2.50 - 3.49		15.92	35.24	14.24	9.90	14.54	7.02	3.59	1.55	100.00
3.50 - 4.99		11.15	26.92	19.70	11.74	13.41	9.69	4.65	2.74	100.00
5.00 - 7.49		10.72	34.10	15.42	11.48	11.21	7.62	6.45	3.00	100.00
7.50 - 9.99		9.42	28.76	18.75	9.13	15.59	9.19	5.36	3.80	100.00
10.00 - 14.99		9.08	30.39	14.85	10.04	16.11	8.10	8.64	2.79	100.00
15.00 - 19.99		12.49	25.23	17.02	8.61	14.50	8.36	7.05	6.74	100.00
20.00 - 29.99		10.97	20.73	16.91	10.47	12.22	13.26	9.93	5.51	100.00
30.00 - 49.99		4.83	18.56	15.00	13.05	20.68	11.86	8.56	7.46	100.00
50.00 - 99.99		-	9.84	21.74	11.90	14.87	6.64	11.90	23.11	100.00
100 & above		-	6.36	9.25	37.00	15.03	8.09	9.25	15.02	100.00
total		14.67	31.20	16.39	9.63	12.56	7.32	5.23	3.00	100.00

dd.

National Sample Survey, Eleventh Round : August 1956 - February 1957

Table (1.15) : Value of implements and equipments per household by items for agricultural holding class 1 & 2 combined : actual and percentage to total : All India

(reference period : August 1956 - January 1957)*

sample villages : 1848

sample households : 7275

items	per household value in Rs.	percentage to total value
(1)	(2)	(3)
1. plough (iron)	0.92	0.45
2. plough (wooden)	5.47	2.64
3. harrow	2.16	1.04
4. sickles	1.82	0.88
5. other instruments	7.02	3.40
6. pumps (electric)	5.66	2.74
7. pumps (others)	0.96	0.47
sub-total - 1	24.01	11.62
8. persian wheel	3.58	1.73
9. other appliances	2.25	1.09
10. carts, boats	26.99	13.06
11. bunds and fencings	0.91	0.44
12. containers	1.26	0.61
13. tanks, wells	78.70	38.06
14. store house and sheds	13.60	6.58
15. cattle sheds	46.26	22.38
16. others	9.16	4.43
sub-total - 2	182.71	88.38
17. total	206.72	100.00

*as on date of survey

Table (1.16) : Percentage distribution of value of implements and equipments by agricultural holding classes : All India

(reference period : August 1956 - January 1957)*

items	value		
	agricultural holding		
	class 1	class 2	class 1&2
(1)	(2)	(3)	(4)
1. plough (iron)	1.31	98.69	100.00
2. plough (wooden)	0.89	99.11	100.00
3. harrow	1.03	98.97	100.00
4. sickles	7.40	92.60	100.00
5. other instruments	1.93	98.07	100.00
6. pumps (electric)	-	100.00	100.00
7. pumps (others)	-	100.00	100.00
sub-total - 1	1.47	98.53	100.00
8. persian wheel	0.01	99.99	100.00
9. other appliances	0.81	99.19	100.00
10. carts, boats	0.94	99.06	100.00
11. bunds, fencing	10.42	89.58	100.00
12. containers	1.54	98.46	100.00
13. tanks, wells	0.06	99.94	100.00
14. store house and sheds	3.00	97.00	100.00
15. cattle sheds	1.87	98.13	100.00
16. others	2.50	97.50	100.00
sub-total - 2	1.06	98.94	100.00
(i) sample villages	-	-	1848
(ii) sample households	1780	5495	7275

* as on date of survey

National Sample Survey, Eleventh Round : August 1956 - February 1957

Table (1.17): Expenditure on implements and equipments per household by items, actual and percentage to total for agricultural holding class 1 & 2 combined : All-India.

(reference period : July 1955 - June 1956)

Sample villages : 1848

Sample households: 7275

items	per household in Rs.	percentage to total
(1)	(2)	(3)
1. constructions, improvements reclamations	-	-
(a) cost of materials	2.00	13.29
(b) hired labour charges	1.48	9.84
(c) total	3.48	23.13
2. purchase	2.91	19.33
3. sale	1.90	12.67
4. breakage etc.	0.56	3.73
5. repair and maintenance		
(a) cost of materials	2.16	14.37
(b) hired labour charges	3.13	20.84
(c) total	5.29	35.21
6. hire charges	0.89	5.93
7. total expenditure	15.03	100.00

Table (1.18): Percentage distribution of expenditure on implements and equipments by agricultural holding classes: All-India.

(reference period : July 1955 - June 1956)

items	agricultural holding		
	class 1	class 2	class 1 & 2
(1)	(2)	(3)	(4)
1. construction, improvements and reclamation	-	-	-
(a) cost of materials	1.21	98.79	100.00
(b) hired labour charges	0.26	99.74	100.00
(c) total	0.81	99.19	100.00
2. purchase	2.88	97.12	100.00
3. sale	13.22	86.78	100.00
4. breakage etc.	1.98	98.02	100.00
5. repair and maintenance			
(a) cost of materials	2.61	97.39	100.00
(b) hired labour charges	1.47	98.53	100.00
(c) total	1.94	98.06	100.00
6. hire charges	3.38	98.06	100.00
7. total expenditure	3.38	96.62	100.00
(i) sample villages	-	-	-
(ii) sample households	1780	5495	7275

National Sample Survey, Eleventh Round: August 1956-February 1957

Table (1.19): Other expenses (miscellaneous items) actual (per household) and percentage to total for agricultural holding class 1 and 2 combined : All-India

(reference period : July 1955 - June 1956)

sample villages : 1848

sample households: 7275

items	per house- hold other expenses in Rs.	percentage of each item to total
(1)	(2)	(3)
1. ropes and cordages	2.54	36.20
2. insecticides	0.06	0.82
3. transport service	0.41	5.85
4. marketing charges	0.13	1.85
5. betterment levy	0.07	0.97
6. others	0.45	6.43
7. total	3.66	52.12
8. interest on loan	1.92	27.42
9. litigation	1.43	20.46
10. grand total	7.01	100.00

Table (1.20): Percentage distribution of other expenses by agricultural holding classes : All-India

(reference period : July 1955 - June 1956)

items	agricultural holding		
	class 1	class 2	class 1+2
(1)	(2)	(3)	(4)
1. ropes and cordages	3.90	96.10	100.00
2. insecticides	0.39	99.61	100.00
3. transport service	0.39	99.61	100.00
4. marketing	0.47	99.53	100.00
5. betterment levy	0.15	99.85	100.00
6. others	0.61	99.39	100.00
7. total	2.86	97.14	100.00
8. interest on loan	3.96	96.04	100.00
9. litigation	1.94	98.06	100.00
10. grand total	2.97	97.03	100.00
(i) sample villages	-	-	1848
(ii) sample households	1780	5495	7275

National Sample Survey, Eleventh Round : August 1956 - February 1957
of quantity
Table (1.21): Production of crop and straw per acre, and ratio of
straw to crop, All-India.

(Reference period : July 1955 - June 1956)

sample villages : 1848

sample households : 5495

crop	quantity in mds.		ratio of straw to crop
	crop	straw	
(1)	(2)	(3)	(4)
1 paddy	12.52	11.50	0.92
2 wheat	6.43	7.04	1.09
3 jowar	3.23	8.25	2.55
4 bajra	2.60	5.59	2.15
5 barley	8.63	9.59	1.11
6 maize	7.34	10.67	1.45
7 ragi	7.77	9.14	1.18
8 gram	4.80	3.68	0.77
9 small millets	3.78	3.15	0.83
10 groundnut	5.90	1.95	0.33
11 cotton	2.46	0.47	0.19
12 jute	9.88	7.35	0.74
13 minor cereals	6.38	6.69	1.05
14 arhar	4.44	3.92	0.88
15 urdh	2.74	2.50	0.91
16 moong	1.97	1.88	0.95
17 masur	5.55	4.95	0.89
18 other pulses	3.26	3.13	0.96
19 total pulses	3.42	3.18	0.93
20 sugarcane	202.80	11.44	0.06
21 rape & mustard	3.88	0.93	0.24
22 sesamum	1.41	0.21	0.15
23 linseed	1.70	0.35	0.21
24 castor	2.17	0.38	0.18
25 other oil seeds	2.04	0.28	0.14
26 total oil seeds	2.21	0.43	0.19
27 potato	64.12	3.43	0.05
28 spices	7.57	0.85	0.11
29 tobacco	7.83	-	-

National Sample Survey, Eleventh Round : August 1956 - February 1957

Table (1.22) : Value of crop and straw per acre : actual and percentage to total : All India

(Reference period : July 1955 - June 1956)

sample villages : 1848

sample households : 5495

crop	value in Rs.			percentage		
	crop	straw	total	crop	straw	total
(1)	(2)	(3)	(4)	(5)	(6)	(7)
1 paddy	109.13	13.36	122.49	89.09	10.91	100.00
2 wheat	84.02	12.72	96.74	86.85	13.15	100.00
3 jowar	31.57	12.09	43.66	72.32	27.68	100.00
4 bajra	26.69	10.83	37.52	71.13	28.87	100.00
5 barley	85.93	17.95	103.88	82.72	17.28	100.00
6 maize	67.60	10.84	78.44	86.18	13.82	100.00
7 ragi	62.00	9.82	71.82	86.32	13.68	100.00
8 gram	44.47	4.96	49.43	89.96	10.04	100.00
9 small millets	26.59	3.05	29.64	89.70	10.30	100.00
10 groundnut	63.64	2.86	66.50	95.70	4.30	100.00
11 cotton	65.61	0.44	66.05	99.34	0.66	100.00
12 jute	206.16	9.24	215.40	95.71	4.29	100.00
13 minor cereals	39.29	8.08	47.37	82.94	17.06	100.00
14 arhar	47.93	5.76	53.69	89.28	10.72	100.00
15 urdh	45.98	4.17	50.15	91.69	8.31	100.00
16 moong	23.93	2.49	26.42	90.59	9.41	100.00
17 masur	70.16	8.65	78.81	89.03	10.97	100.00
18 other pulses	27.81	6.34	34.15	81.42	18.58	100.00
19 total pulses	36.04	5.65	41.69	86.45	13.55	100.00
20 sugarcane	298.13	7.00	305.13	97.71	2.29	100.00
21 rape & mustard	71.59	0.67	72.26	99.08	0.92	100.00
22 sesamum	29.43	0.16	29.59	99.47	0.53	100.00
23 linseed	29.62	0.46	30.08	98.48	1.52	100.00
24 castor	27.95	0.08	28.03	99.73	0.27	100.00
25 other oil seeds	29.09	0.29	29.38	99.02	0.98	100.00
26 total oil seeds	38.24	0.38	38.62	99.02	0.98	100.00
27 potato	430.19	2.61	432.80	99.40	0.60	100.00
28 spices	210.32	0.45	210.77	99.79	0.21	100.00
29 tobacco	271.11	-	271.11	100.00	-	100.00

National Sample Survey, Eleventh Round : August 1956 - February 1957

Table (1.23) : Percentage distribution of disbursement of crops :
All India

(Reference period : July 1955 - June 1956)

sample villages : 1848

sample households : 5495

crop	items of disbursement							
	share or rent	goods and ser- vices	crop loan	con- sumed by house- hold	sold	wastage	stock	total
(1)	(2)	(3)	(4)	(5)	(6)	(7)	(8)	(9)
1 paddy	8.31	5.25	1.45	62.65	11.46	0.19	10.69	100.00
2 wheat	5.69	6.10	2.01	38.73	22.33	3.88	21.26	100.00
3 jowar	5.39	9.21	1.73	64.23	10.14	0.21	9.09	100.00
4 bajra	4.72	4.54	1.03	72.48	11.09	0.14	6.00	100.00
5 barley	2.65	3.23	1.87	37.09	8.10	0.08	46.98	100.00
6 maize	5.41	4.84	0.63	72.53	10.90	0.23	5.46	100.00
7 ragi	8.48	6.55	1.80	59.52	8.02	0.12	15.51	100.00
8 gram	7.76	3.69	1.72	39.52	26.25	0.54	20.52	100.00
9 small millets	4.61	10.44	1.45	64.38	6.40	0.42	12.30	100.00
10 groundnut	5.10	2.05	0.40	10.52	77.02	0.14	4.77	100.00
11 cotton	3.24	0.84	0.15	1.44	94.01	0.02	0.30	100.00
12 jute	10.62	2.23	0.92	6.21	77.68	0.30	2.04	100.00
13 minor cereals	2.44	5.53	0.70	75.68	8.67	0.04	6.94	100.00
14 arhar	4.06	1.60	0.40	48.36	28.64	0.73	16.21	100.00
15 urdh	5.30	1.77	0.43	54.53	26.77	0.09	11.11	100.00
16 moong	4.03	3.32	0.94	48.35	27.25	0.11	16.00	100.00
17 musur	9.68	3.60	0.36	41.11	19.44	0.03	25.78	100.00
18 other pulses	4.45	5.19	1.28	49.44	17.51	0.23	21.90	100.00
19 total pulses	4.81	3.62	0.86	48.93	22.25	0.33	19.20	100.00
20 sugarcane	2.66	0.76	0.64	27.50	67.24	0.40	0.80	100.00
21 rape & mustard	5.54	1.81	0.03	19.16	36.55	0.46	36.45	100.00
22 sesamum	6.70	3.08	3.67	22.14	57.08	0.78	6.55	100.00
23 linseed	5.74	3.46	0.98	22.47	55.43	0.03	11.89	100.00
24 castor	0.00	0.37	0.60	16.12	82.20	-	0.71	100.00
25 other oil seeds	6.79	0.74	0.45	35.11	48.71	0.08	8.12	100.00
26 total oil seeds	5.15	1.83	0.63	21.96	48.91	0.30	21.22	100.00
27 potato	3.63	1.61	0.02	25.40	63.25	0.27	5.82	100.00
28 spices	7.66	1.04	0.82	14.58	64.36	0.59	10.95	100.00
29 tobacco	3.05	0.22	0.14	2.52	91.74	-	2.33	100.00

National Sample Survey, Eleventh Round : August 1956 - February 1957

Table (1.24) : Quantity of seed used per acre and percentage use by source of supply : All-India

(Reference period : July 1955 - June 1956)

sample villages : 1848

sample households : 5495

crop	quantity in srs.			percentage		
	home supply	purchase	total	home supply	purchase	total
(1)	(2)	(3)	(4)	(5)	(6)	(7)
1 paddy	30.95	5.69	36.64	84.47	15.53	100.00
2 wheat	21.96	11.21	33.17	66.20	33.80	100.00
3 jowar	3.44	1.24	4.68	73.44	26.56	100.00
4 bajra	2.28	0.90	3.18	71.70	28.30	100.00
5 barley	28.34	17.43	45.77	61.92	38.08	100.00
6 maize	8.46	2.20	10.66	79.33	20.67	100.00
7 ragi	7.89	1.47	9.36	84.25	15.75	100.00
8 gram	15.01	8.00	23.01	65.21	34.79	100.00
9 small millets	5.53	0.73	6.26	88.40	11.60	100.00
10 groundnut	15.15	8.77	23.92	63.35	36.65	100.00
11 cotton	0.95	6.03	6.98	13.56	86.44	100.00
12 jute	3.66	3.00	6.66	55.02	44.98	100.00
13 minor cereals	9.51	3.72	13.23	71.89	28.11	100.00
14 arhar	6.01	1.00	7.01	85.70	14.30	100.00
15 urdh	7.37	1.99	9.36	78.72	21.28	100.00
16 moong	6.95	1.04	7.99	87.04	12.96	100.00
17 musur	18.84	5.24	24.08	78.25	21.75	100.00
18 other pulses	16.52	4.10	20.62	80.12	19.88	100.00
19 total pulses	12.22	2.90	15.12	80.81	19.19	100.00
20 sugarcane	491.98	291.93	783.91	62.76	37.24	100.00
21 rape & mustard	3.02	1.03	4.05	74.65	25.35	100.00
22 sesamum	2.07	0.99	3.06	67.56	32.44	100.00
23 linseed	6.93	2.11	9.04	76.59	23.41	100.00
24 castor	6.15	1.33	7.48	82.16	17.84	100.00
25 other oil seeds	3.81	0.98	4.79	79.47	20.53	100.00
26 total oil seeds	4.34	1.34	5.68	76.39	23.61	100.00
27 potato	74.58	90.43	165.01	45.20	54.80	100.00
28 spices	10.64	8.65	19.29	55.16	44.84	100.00
29 tobacco	0.25	0.12	0.37	66.95	33.05	100.00

National Sample Survey, Eleventh Round : August 1956 - February 1957

Table (1.25) : Value of seed used per acre by source of supply:
All-India.

(Reference period : July 1955 - June 1956)

sample villages : 1048

sample households: 5495

crop	value in Rs.		
	home-supply	purchase	total
(1)	(2)	(3)	(4)
1. paddy	8.77	1.61	10.38
2. wheat	8.52	4.35	12.87
3. jowar	1.29	0.46	1.75
4. bajra	0.89	0.35	1.24
5. barley	9.32	5.73	15.05
6. maize	2.93	0.76	3.69
7. ragi	2.18	0.41	2.59
8. gram	4.38	2.33	6.71
9. small millets	1.16	0.15	1.31
10. groundnut	7.84	4.53	12.37
11. cotton	0.34	2.17	2.51
12. jute	3.25	2.66	5.91
13. minor cereals	2.77	1.08	3.86
14. arhar	2.23	0.37	2.60
15. urdh	3.50	0.95	4.45
16. mung	3.18	0.47	3.65
17. musur	6.67	1.85	8.52
18. other pulses	4.50	1.12	5.62
19. total pulses	3.84	0.91	4.75
20. sugarcane	26.77	15.89	42.66
21. rape & mustard	2.01	0.68	2.69
22. sesamum	2.34	1.13	3.47
23. linseed	3.16	0.97	4.13
24. castor	1.74	0.38	2.12
25. other oil seeds	1.61	0.42	2.03
26. total oil seeds	2.34	0.72	3.06
27. potato	46.48	56.36	102.84
28. spices	6.68	5.43	12.11
29. tobacco	1.36	0.67	2.03

National Sample Survey, Eleventh Round : August 1956 - February 1957
 Table (1.26) : Quantity of chemical and other types of manures used
 per acre by source of supply: All-India
 (Reference period : July 1955 - June 1956)

sample villages : 1848

sample households : 5495

crop	quantity of manure			
	chemi- cals in srs.	others (in maunds)		
		home- supply	pur- chase	total
(1)	(2)	(3)	(4)	(5)
1. paddy	2.63	13.57	3.12	16.69
2. wheat	0.57	10.90	0.89	11.79
3. jowar	0.20	6.37	0.90	7.27
4. bajra	0.13	7.27	0.99	8.26
5. barley	0.65	15.12	0.70	15.82
6. maize	0.36	36.40	3.06	39.46
7. ragi	0.58	28.13	4.56	32.69
8. gram	0.03	1.63	0.04	1.67
9. small millets	0.01	5.40	0.74	6.14
10. groundnut	0.54	9.10	1.87	10.97
11. cotton	0.52	10.09	2.53	12.62
12. jute	0.16	15.22	1.80	17.02
13. minor cereals	0.05	6.80	0.74	7.54
14. arhar	0.09	4.11	0.27	4.38
15. urdh	-	4.06	0.32	4.38
16. mung	0.15	2.23	0.20	2.43
17. musur	-	4.56	-	4.56
18. other pulses	0.07	2.14	0.19	2.33
19. total pulses	0.07	2.93	0.22	3.15
20. sugarcane	14.80	63.44	4.86	68.30
21. rape & mustard	0.10	4.98	0.61	5.59
22. sesamum	-	1.39	2.85	4.24
23. linseed	-	1.05	0.03	1.08
24. castor	-	1.83	0.18	2.01
25. other oil seeds	-	3.34	0.03	3.37
26. total oil seeds	0.02	2.55	0.72	3.27
27. potato	18.21	52.42	23.41	75.83
28. spices	8.08	31.87	5.58	37.45
29. tobacco	4.03	30.57	8.84	39.41

National Sample Survey, Eleventh Round : August 1956 - February 1957

Table (1.27) : Percentage distribution of quantity of (others) manure used by source of supply : All-India

(Reference period : July 1955 - June 1956)

sample villages : 1848

sample households : 5495

	crop	percentage		
		home supply	purchase	total
	(1)	(2)	(3)	(4)
1	paddy	81.33	18.67	100.00
2	wheat	92.43	7.57	100.00
3	jowar	87.63	12.37	100.00
4	bajra	87.97	12.03	100.00
5	barley	95.62	4.38	100.00
6	maize	92.26	7.74	100.00
7	ragi	86.04	13.96	100.00
8	gram	97.76	2.24	100.00
9	small millets	87.91	12.09	100.00
10	groundnut	82.99	17.01	100.00
11	cotton	79.93	20.07	100.00
12	jute	89.44	10.56	100.00
13	minor cereals	90.19	9.81	100.00
14	arhar	93.79	6.21	100.00
15	urdh	92.80	7.20	100.00
16	moong	91.91	8.09	100.00
17	musur	100.00		100.00
18	other pulses	91.68	8.32	100.00
19	total pulses	93.10	6.90	100.00
20	sugarcane	92.88	7.12	100.00
21	rape & mustard	89.02	10.98	100.00
22	sesamum	32.80	67.20	100.00
23	linseed	97.27	2.73	100.00
24	castor	91.35	8.65	100.00
25	other oil seeds	99.17	0.83	100.00
26	total oil seeds	77.86	22.14	100.00
27	potato	69.13	30.87	100.00
28	spices	85.11	14.89	100.00
29	tobacco	77.56	22.44	100.00

National Sample Survey, Eleventh Round : August 1956 - February 1957

Table (1.28) : Value of manure used per acre by type : actual and percentage to total and water charges per acre : All India

(Reference period : July 1955 - June 1956)

sample villages : 1848

sample households : 5495

crop	value in Rs.				all variety total	percentages by types		water charges in Rs.
	chemi-cal	home supply	others purchase	total		chemi-cal	others	
(1)	(2)	(3)	(4)	(5)	(6)	(7)	(8)	(9)
1 paddy	1.37	5.66	1.30	6.96	8.33	16.45	83.55	0.48
2 wheat	0.17	3.22	0.26	3.48	3.65	4.66	95.34	0.89
3 jowar	0.10	2.58	0.36	2.94	3.04	3.29	96.71	0.12
4 bajra	0.28	3.11	0.42	3.53	3.81	7.35	92.65	0.05
5 barley	0.08	6.12	0.28	6.40	6.48	1.23	98.77	0.81
6 maize	0.21	11.69	0.98	12.67	12.88	1.63	98.37	0.19
7 ragi	1.43	12.42	2.01	14.43	15.86	9.02	90.98	0.31
8 gram	0.01	0.56	0.01	0.57	0.58	1.72	98.28	0.23
9 small millets	0.01	3.13	0.43	3.56	3.57	0.28	99.72	0.03
10 groundnut	0.19	3.92	0.80	4.72	4.91	3.87	96.13	0.20
11 cotton	0.11	4.79	1.20	5.99	6.10	1.80	98.20	0.25
12 jute	2.20	6.28	0.74	7.02	9.22	23.86	76.14	-
13 minor cereals	0.63	4.87	0.53	5.40	6.03	10.45	89.55	0.11
14 arhar	0.02	1.98	0.13	2.11	2.13	0.94	99.06	0.01
15 urdh	-	1.53	0.12	1.65	1.65	-	100.00	0.03
16 moong	0.10	1.27	0.11	1.38	1.48	6.76	93.24	0.00
17 musur	-	1.72	-	1.72	1.72	-	100.00	0.00
18 other pulses	0.04	1.27	0.11	1.38	1.42	2.82	97.18	0.35
19 total pulses	0.04	1.48	0.11	1.59	1.63	2.47	97.53	0.18
20 sugarcane	6.37	17.26	1.32	18.58	24.95	25.53	74.47	6.99
21 rape & mustard	0.04	3.19	0.39	3.58	3.62	1.10	98.90	0.29
22 sesamum	-	0.48	0.97	1.45	1.45	-	100.00	0.01
23 linseed	-	0.36	0.01	0.37	0.37	-	100.00	0.02
24 castor	-	0.92	0.09	1.01	1.01	-	100.00	-
25 other oil seeds	-	0.92	0.01	0.93	0.93	-	100.00	0.05
26 total oil seeds	0.01	1.12	0.32	1.44	1.45	0.69	99.31	0.08
27 potato	10.44	24.90	11.12	36.02	46.46	22.47	77.53	5.73
28 spices	6.97	12.82	2.24	15.06	22.03	31.64	68.36	0.32
29 tobacco	1.46	19.13	5.54	24.67	26.13	5.59	94.41	6.30

National Sample Survey, Eleventh Round : August 1956 - February 1957

Table (1.29): Total number and percentage distribution of human labour days .
utilised per acre for different agricultural operations : All-
India.

(reference period : July 1955 - June 1956)

sample villages = 1848

sample households = 5495

crop (1)	labour days				percentage			
	operations				operations			
	I	II	III	total	I	II	III	total
(1)	(2)	(3)	(4)	(5)	(6)	(7)	(8)	(9)
1. paddy	13	22	15	50	26	44	30	100
2. wheat	12	10	10	32	38	31	31	100
3. jowar	5	7	7	19	26	37	37	100
4. bajra	5	7	7	19	26	37	37	100
5. barley	16	18	16	50	32	36	32	100
6. maize	11	20	12	43	26	46	28	100
7. ragi	15	21	17	53	28	40	32	100
8. gram	6	5	8	19	32	26	42	100
9. small millets	7	8	10	25	28	32	40	100
10. groundnut	6	9	13	28	21	32	47	100
11. cotton	4	11	9	24	17	46	37	100
12. jute	19	21	27	67	29	31	40	100
13. minor cereals	11	13	12	36	31	36	33	100
14. arhar	4	6	10	20	20	30	50	100
15. urdh	6	5	9	20	30	25	45	100
16. moong	5	5	8	18	28	28	44	100
17. musur	8	7	11	26	31	27	42	100
18. other pulses	4	5	9	18	22	28	50	100
19. total pulses	5	5	9	19	26	26	48	100
20. sugarcane	21	41	41	103	20	40	40	100
21. rape & mustard	7	4	9	20	35	20	45	100
22. sesamum	4	5	5	14	28	36	36	100
23. linseed	4	3	6	13	31	23	46	100
24. castor	4	4	5	13	31	31	38	100
25. other oil seeds	6	5	8	19	32	26	42	100
26. total oil seeds	5	4	7	16	31	25	44	100
27. potato	23	60	31	114	20	53	27	100
28. spices	12	41	23	76	16	54	30	100
29. tobacco	20	23	18	61	33	38	29	100

1. Agricultural operation I : Soil preparation.
2. " " II : Sowing, transplanting and other growing operations.
3. " " III : Harvesting, transplanting, threshing & storing.

National Sample Survey, Eleventh Round : August 1956 - February 1957

Table (1.30) : Total number and percentage distribution of household, hired and exchanged animal labour days utilised per acre for all agricultural operations : All-India

(reference period : July 1955 - June 1956)

sample villages = 1848 sample households = 5495

crop	labour days				percentage			
	household	hired	ex-change	total	household	hired	ex-change	total
(1)	(2)	(3)	(4)	(5)	(6)	(7)	(8)	(9)
1. paddy	26	2	3	31	85	7	8	100
2. wheat	29	1	2	32	92	3	5	100
3. jowar	11	1	1	13	85	9	6	100
4. bajra	10	0	1	11	89	4	7	100
5. barley	44	2	3	49	89	4	7	100
6. maize	21	1	1	23	91	3	6	100
7. ragi	26	2	3	31	83	8	9	100
8. gram	17	1	1	19	91	4	5	100
9. small millets	15	1	1	17	86	5	9	100
10. groundnut	11	1	1	13	85	11	4	100
11. cotton	11	1	0	12	91	5	4	100
12. jute	34	2	2	38	92	4	4	100
13. minor cereals	17	1	3	21	81	7	12	100
14. arhar	11	0	1	12	90	4	6	100
15. urdh	15	1	1	17	91	3	6	100
16. moong	11	0	1	12	88	4	8	100
17. musur	22	1	2	25	87	6	7	100
18. other pulses	12	1	1	14	86	5	9	100
19. total pulses	12	1	1	14	87	5	8	100
20. sugarcane	60	5	4	69	87	7	6	100
21. rape & mustard	18	0	1	19	94	2	4	100
22. sesamum	9	0	0	9	94	3	3	100
23. linseed	10	0	1	11	86	3	11	100
24. castor	8	0	0	8	94	5	1	100
25. other oil seeds	14	1	1	16	87	5	8	100
26. total oil seeds	12	0	1	13	90	3	7	100
27. potato	33	1	3	37	89	4	7	100
28. spices	23	3	2	28	81	10	9	100
29. tobacco	19	1	1	21	90	5	5	100

National Sample Survey, Eleventh round : August 1956 - February 1957

Table (1.31) : Total charges and percentage distribution of human labour charges utilised per acre for different agricultural operations : All-India

(reference period : July 1955 - June 1956)

sample villages : 1848

sample households : 5495

crop (1)	labour charges in Rs.				percentage			
	operations				operations			
	I (2)	II (3)	III (4)	total (5)	I (6)	II (7)	III (8)	total (9)
1. paddy	13.23	17.91	14.35	45.49	29.08	39.37	31.55	100.00
2. wheat	12.95	9.88	12.49	35.32	36.67	27.97	35.36	100.00
3. jowar	4.24	5.44	5.80	15.48	27.39	35.14	37.47	100.00
4. bajra	5.03	6.76	7.76	19.55	25.73	34.58	39.69	100.00
5. barley	13.60	15.09	14.21	42.90	31.70	35.18	33.12	100.00
6. maize	11.28	17.30	11.03	39.61	28.48	43.67	27.85	100.00
7. ragi	12.08	12.53	11.21	35.82	33.72	34.98	31.30	100.00
8. gram	7.66	5.15	10.45	23.26	32.93	22.14	44.93	100.00
9. small millets	5.79	5.46	6.72	17.97	32.22	30.38	37.40	100.00
10. groundnut	4.78	6.82	10.58	22.18	21.55	30.75	47.70	100.00
11. cotton	4.74	9.50	7.52	21.76	21.78	43.66	34.56	100.00
12. jute	24.19	27.05	36.14	87.38	27.68	30.96	41.36	100.00
13. minor cereals	9.94	11.30	10.20	31.44	31.62	35.94	32.44	100.00
14. arhar	3.67	4.16	8.52	16.35	22.45	25.44	52.11	100.00
15. urdh	4.57	4.49	8.11	17.17	26.62	26.15	47.23	100.00
16. moong	3.49	3.83	7.02	14.34	24.34	26.71	48.95	100.00
17. musur	9.27	6.26	11.20	26.73	34.68	23.42	41.90	100.00
18. other pulses	3.54	4.12	7.26	14.92	23.73	27.61	48.66	100.00
19. total pulses	3.97	4.25	7.80	16.02	24.78	26.53	48.69	100.00
20. sugarcane	22.14	34.20	44.52	100.86	21.95	33.91	44.14	100.00
21. rape & mustard	8.13	6.00	8.16	22.29	36.47	26.92	36.61	100.00
22. sesamum	2.95	3.25	3.57	9.77	30.19	33.27	36.54	100.00
23. linseed	2.30	1.96	5.27	9.53	24.13	20.57	55.30	100.00
24. castor	3.21	4.11	3.95	11.27	28.48	36.47	35.05	100.00
25. other oil seeds	4.45	3.32	4.91	12.68	35.10	26.18	38.72	100.00
26. total oil seeds	4.24	3.54	5.37	13.15	32.24	26.92	40.84	100.00
27. potato	30.68	67.51	32.10	130.29	23.55	51.81	24.64	100.00
28. spices	10.79	31.66	15.55	58.00	18.60	54.59	26.81	100.00
29. tobacco	21.92	25.99	18.81	66.72	32.85	38.96	28.19	100.00

1. Agricultural operation I : soil preparation
2. " " II : sowing, transplanting and other growing operations
3. " " III : harvesting, transplanting, threshing and storing.

National Sample Survey, Eleventh Round : August 1956 - February 1957

Table (1.32) : Total human labour charges utilised per acre for household, hired and exchanged labour for all agricultural operations : All-India
(reference period : July 1955 - June 1956)

sample villages = 1848

sample households = 5495

crop	labour charges in Rs.			
	household	hired	ex-change	total
(1)	(2)	(3)	(4)	(5)
1. paddy	27.75	16.83	0.91	45.49
2. wheat	25.08	9.54	0.70	35.32
3. jowar	10.06	5.11	0.31	15.48
4. bajra	14.86	4.10	0.59	19.55
5. barley	34.18	7.29	0.43	42.90
6. maize	32.88	6.34	0.39	39.61
7. ragi	21.13	12.90	1.79	35.82
8. gram	16.51	6.28	0.47	23.26
9. small millets	12.94	4.67	0.36	17.97
10. groundnut	11.54	10.20	0.44	22.18
11. cotton	11.75	9.79	0.22	21.76
12. jute	50.68	34.08	2.62	87.38
13. minor cereals	23.90	6.60	0.94	31.44
14. arhar	10.79	5.40	0.16	16.35
15. urdh	12.36	4.64	0.17	17.17
16. moong	9.75	4.30	0.29	14.34
17. musur	19.24	7.22	0.27	26.73
18. other pulses	9.85	4.77	0.30	14.92
19. total pulses	10.73	4.97	0.32	16.02
20. sugarcane	58.50	30.26	12.10	100.86
21. rape & mustard	16.27	5.80	0.22	22.29
22. sesamum	6.64	2.93	0.20	9.77
23. linseed	5.34	4.10	0.09	9.53
24. castor	7.55	3.72	0	11.27
25. other oil seeds	8.75	3.55	0.38	12.68
26. total oil seeds	8.68	4.21	0.26	13.15
27. potato	91.20	35.18	3.91	130.29
28. spices	35.96	21.46	0.58	58.00
29. tobacco	38.03	28.02	0.67	66.72

National Sample Survey, Eleventh Round : August 1956 -February 1957

Table (1.33) : Total number and percentage distribution of animal labour days utilised per acre for different agricultural operations : All-India.

(reference period : July 1955 - June 1956)

sample villafes = 1848

sample households = 5495

crop	labour days				percentage			
	operations				operations			
	I	II	III	total	I	II	III	total
(1)	(2)	(3)	(4)	(5)	(6)	(7)	(8)	(9)
1. paddy	18	6	7	31	58	19	23	100
2. wheat	18	7	7	32	56	22	22	100
3. jowar	7	4	2	13	54	31	15	100
4. bajra	6	3	2	11	55	27	18	100
5. barley	25	13	11	49	51	27	22	100
6. maize	14	8	1	23	61	35	4	100
7. ragi	19	8	4	31	61	26	13	100
8. gram	11	4	4	19	58	21	21	100
9. small millets	10	3	4	17	59	18	23	100
10. groundnut	8	3	2	13	62	23	15	100
11. cotton	6	5	1	12	50	42	8	100
12. jute	32	4	2	38	84	11	5	100
13. minor cereals	12	5	4	21	57	24	19	100
14. arhar	6	3	3	12	50	25	25	100
15. urdh	10	3	4	17	59	18	23	100
16. moong	6	3	3	12	50	25	25	100
17. musur	14	5	6	25	56	20	24	100
18. other pulses	7	3	4	14	50	21	29	100
19. total pulses	7	3	4	14	50	21	29	100
20. sugarcane	31	18	20	69	45	26	29	100
21. rape & mustar	12	4	3	19	63	21	16	100
22. sesamum	5	3	1	9	56	33	11	100
23. linseed	5	3	3	11	46	27	27	100
24. castor	5	2	1	8	62	25	13	100
25. other oil seeds	11	3	2	16	69	19	12	100
26. total oil seeds	8	3	2	13	62	23	15	100
27. potato	27	8	2	37	73	22	5	100
28. spices	16	11	1	28	57	39	4	100
29. tobacco	15	5	1	21	71	24	5	100

Agricultural operation I : Soil preparation.

" " II : Sowing, transplanting and other growing operations.

" " III : Harvesting, transplanting, threshing & storing.

National Sample Survey, Eleventh Round : August 1956 - February 1957

Table (1.34) : Total number and percentage distribution of household, hired and exchanged human labour days utilised per acre for all agricultural operations: All-India

(reference period : July 1955 - June 1956)

sample villages = 1848 sample households = 5495

crop	labour days				percentage			
	house- hold	hired	ex- change	total	house- hold	hired	ex- change	total
(1)	(2)	(3)	(4)	(5)	(6)	(7)	(8)	(9)
1. paddy	31	18	1	50	61	37	2	100
2. wheat	22	9	1	32	71	27	2	100
3. jowar	12	4	1	19	65	33	2	100
4. bajra	14	4	1	19	76	21	3	100
5. barley	41	8	1	50	82	17	1	100
6. maize	36	7	0	43	83	16	1	100
7. ragi	31	19	3	53	59	36	5	100
8. gram	14	5	0	19	71	27	2	100
9. small millets	18	4	1	25	72	26	2	100
10. groundnut	14	13	1	28	52	46	2	100
11. cotton	13	11	0	24	54	45	1	100
12. jute	39	26	2	67	58	39	3	100
13. minor cereals	27	8	1	36	76	21	3	100
14. arhar	13	7	0	20	66	33	1	100
15. urdh	15	5	0	20	72	27	1	100
16. moong	13	5	0	18	68	30	2	100
17. musur	19	7	0	26	72	27	1	100
18. other pulses	12	6	0	18	66	32	2	100
19. total pulses	13	6	0	19	67	31	2	100
20. sugarcane	60	31	12	103	58	30	12	100
21. rape & mustard	15	5	0	20	73	26	1	100
22. sesamum	10	4	0	14	68	30	2	100
23. linseed	7	6	0	13	56	43	1	100
24. castor	9	4	0	13	67	33	0	100
25. other oil seeds	13	5	1	19	69	28	3	100
26. total oil seeds	11	5	0	16	66	32	2	100
27. potato	80	31	3	114	70	27	3	100
28. spices	47	28	1	76	62	37	1	100
29. tobacco	35	25	1	61	57	42	1	100

National Sample Survey, Eleventh round : August 1956 - February 1957.

Table (1.35) : Total and percentage distribution of animal labour charges utilised per acre for different agricultural operations: All-India
(reference period : July 1955 - June 1956)

sample villages = 1848

sample households = 5495

crop	labour charges in Rs.				percentage			
	operations				operations			
	I	II	III	total	I	II	III	total
(1)	(2)	(3)	(4)	(5)	(6)	(7)	(8)	(9)
1. paddy	15.10	4.49	4.89	24.48	61.68	18.34	19.98	100.00
2. wheat	25.12	11.30	9.71	46.13	54.45	24.50	21.05	100.00
3. jowar	8.91	5.32	2.86	17.09	52.14	31.13	16.73	100.00
4. bajra	9.89	5.66	3.72	19.27	51.32	29.37	19.31	100.00
5. barley	33.50	16.98	12.82	63.30	52.92	26.83	20.25	100.00
6. maize	17.33	9.29	1.73	28.35	61.13	32.77	6.10	100.00
7. ragi	13.38	6.58	4.54	24.50	54.61	26.86	18.53	100.00
8. gram	16.76	6.41	6.43	29.60	56.62	21.66	21.72	100.00
9. small millets	9.40	6.78	3.07	19.25	48.83	35.22	15.95	100.00
10. groundnut	10.90	5.21	2.66	18.77	58.07	27.76	14.17	100.00
11. cotton	9.85	7.89	1.48	19.22	51.25	41.05	7.70	100.00
12. jute	33.30	3.51	1.31	38.12	87.36	9.21	3.43	100.00
13. minor cereals	12.16	5.97	4.19	22.32	54.48	26.75	18.77	100.00
14. arhar	6.63	3.06	3.53	13.22	50.15	23.15	26.70	100.00
15. urdh	6.99	2.50	2.47	11.96	58.45	20.90	20.65	100.00
16. moong	4.37	2.93	2.72	10.02	43.61	29.24	27.15	100.00
17. musur	14.49	3.41	3.90	21.80	66.47	15.64	17.89	100.00
18. other pulses	6.62	3.58	3.78	13.98	47.35	25.61	27.04	100.00
19. total pulses	6.81	3.26	3.45	13.52	50.37	24.11	25.52	100.00
20. sugarcane	33.79	14.81	23.58	72.18	46.81	20.52	32.67	100.00
21. rape & mustard	9.06	3.72	2.78	15.56	58.23	23.91	17.86	100.00
22. sesamum	4.05	2.57	0.50	7.12	56.88	36.10	7.02	100.00
23. linseed	3.67	3.14	1.36	8.17	44.92	38.43	16.65	100.00
24. castor	3.72	4.49	0.39	8.60	43.26	52.21	4.53	100.00
25. other oil seeds	5.65	2.11	1.09	8.85	63.84	23.84	12.32	100.00
26. total oil seeds	5.36	2.99	1.36	9.71	55.20	30.79	14.01	100.00
27. potato	31.14	7.90	2.06	41.10	75.77	19.22	5.01	100.00
28. spices	17.73	23.40	1.36	42.49	41.73	55.07	3.20	100.00
29. tobacco	28.91	4.02	0.52	33.45	86.43	12.02	1.55	100.00

agricultural operation I : soil preparation.

" " II : sowing, transplanting and other growing operations

" " III : harvesting, transplanting, threshing & storing.

National Sample Survey, Eleventh Round : August 1956 - February 1957

Table (1.36) : Total household hired and exchanged animal labour charges utilised per acre for all agricultural operations: All-India
(Reference period : July 1955 - June 1956)

Sample villages : 1848

sample households: 5495

crop	labour charges in Rs.			
	house- hld	hired	ex- change	total
(1)	(2)	(3)	(4)	(5)
1. paddy	20.81	1.71	1.96	24.48
2. wheat	42.44	1.38	2.31	46.13
3. jowar	14.53	1.54	1.02	17.09
4. bajra	17.15	0.77	1.35	19.27
5. barley	56.34	2.53	4.43	63.60
6. maize	25.80	0.85	1.70	28.35
7. ragi	20.34	1.96	2.20	24.50
8. gram	26.94	1.18	1.48	29.60
9. small millets	16.56	0.96	1.73	19.25
10. groundnut	15.96	2.06	0.75	18.77
11. cotton	17.49	0.96	0.77	19.22
12. jute	35.08	1.52	1.52	38.12
13. minor cereals	18.08	1.56	2.68	22.32
14. arhar	11.90	0.53	0.79	13.22
15. urdh	10.88	0.36	0.72	11.96
16. mung	8.82	0.40	0.80	10.02
17. musur	18.97	1.31	1.52	21.80
18. other pulses	12.02	0.70	1.26	13.98
19. total pulses	11.76	0.68	1.08	13.52
20. sugarcane	62.80	5.05	4.33	72.18
21. rape & mustard	14.63	0.31	0.62	15.56
22. sesamum	6.70	0.21	0.21	7.12
23. linseed	7.03	0.24	0.90	8.17
24. castor	8.08	0.43	0.09	8.60
25. other oil seeds	7.70	0.44	0.71	8.85
26. total oil seeds	8.74	0.29	0.68	9.71
27. potato	36.58	1.64	2.88	41.10
28. spices	34.42	4.25	3.82	42.49
29. tobacco	30.11	1.67	1.67	33.45

AR.

National Sample Survey, Eleventh Round : August 1956 - February 1957

Table (1.37) : Human and animal labour charges per day by agricultural operations : All-India.

(Reference period : July 1955 - June 1956)

sample villages : 1848

sample households : 5495

crop	operations							
	I		II		III		total	
	human	animal	human	animal	human	animal	human	animal
(1)	(2)	(3)	(4)	(5)	(6)	(7)	(8)	(9)
1 paddy	1.02	0.83	0.83	0.70	0.95	0.75	0.92	0.79
2 wheat	1.11	1.41	1.01	1.63	1.16	1.48	1.10	1.47
3 jowar	0.89	1.36	0.73	1.50	0.85	1.45	0.81	1.41
4 bajra	1.12	1.68	0.99	2.05	1.15	1.84	1.08	1.80
5 barley	0.87	1.35	0.82	1.31	0.87	1.22	0.85	1.31
6 maize	1.06	1.20	0.85	1.18	0.90	1.16	0.92	1.19
7 ragi	0.79	0.72	0.59	0.78	0.64	1.11	0.67	0.79
8 gram	1.18	1.58	1.02	1.83	1.26	1.61	1.18	1.63
9 small millets	0.78	0.90	0.71	1.95	0.67	0.79	0.71	1.08
10 groundnut	0.85	1.36	0.74	1.61	0.82	1.62	0.80	1.45
11 cotton	1.07	1.63	0.86	1.65	0.80	1.96	0.87	1.66
12 jute	1.28	1.06	1.32	0.92	1.36	0.76	1.32	1.03
13 minor cereals	0.92	1.00	0.88	1.23	0.86	1.08	0.88	1.07
14 arhar	0.82	1.06	0.75	1.09	0.84	1.16	0.81	1.09
15 urdh	0.82	0.73	0.87	0.75	0.88	0.67	0.86	0.72
16 moong	0.69	0.75	0.74	1.03	0.83	1.07	0.77	0.89
17 masur	1.10	1.06	0.96	0.65	0.98	0.69	1.01	0.88
18 other pulses	0.83	0.97	0.77	1.27	0.84	0.97	0.81	1.03
19 total pulses	0.83	0.94	0.78	1.09	0.85	0.95	0.83	0.97
20 sugarcane	1.06	1.07	0.83	0.81	1.08	1.19	0.98	1.04
21 rape & mustard	1.14	0.77	1.43	1.02	0.89	0.83	1.09	0.83
22 sesamum	0.69	0.75	0.63	0.77	0.66	0.55	0.66	0.74
23 linseed	0.54	0.78	0.69	1.07	0.85	0.53	0.72	0.80
24 castor	0.77	0.78	1.17	1.85	0.87	0.31	0.92	1.01
25 other oil seeds	0.70	0.52	0.69	0.62	0.58	0.51	0.65	0.54
26 total oil seeds	0.79	0.68	0.86	0.92	0.76	0.62	0.79	0.73
27 potato	1.33	1.15	1.13	1.04	1.05	0.92	1.15	1.11
28 spices	0.93	1.13	0.78	2.12	0.68	1.07	0.77	1.52
29 tobacco	1.10	1.88	1.13	0.74	1.02	0.88	1.09	1.56

agricultural operation I : soil preparation
 " " II : sowing, transplanting and other growing operations
 " " III : harvesting, transplanting, threshing and storing

National Sample Survey, Eleventh Round : August 1956 - February 1957

Table (1.38) : Quantity and value of crop and straw (all crops combined) produced per acre : All India

(reference period : July 1955 - June 1957)

sample villages : 1848

sample households : 5495

items	crop	straw	ratio	total
(1)	(2)	(3)	(4)	(5)
1. production of crop per acre in mds.	9.03	6.93	0.77	x
2. value of crop in Rs.	70.32	9.62	0.14	79.94
3. p.c. of value	87.97	12.03	x	100.00
4. average value of maund in Rs.	7.79	1.39	x	*8.85
5. area harvest as p.c. of area sown	x	x	x	94.66
6. prod. of crop per unit quantity of seed	x	x	x	11.89

* gross value of per maund

National Sample Survey, Eleventh Round : August 1956 - February 1957

Table (1.39) : Utilisation of seed, manure and water charges (for all crops combined) : All India.

(reference period : July 1955 - June 1956)

sample villages : 1848

sample households : 5495

items	home-supply	purchase	total
(1)	(2)	(3)	(4)
1. quantity of seed used per acre in srs.	21.30	9.07	30.37
2. p.c. of seed used by sources	70.12	29.88	100.00
3. value of seed used per acre in Rs.	5.24	2.24	7.48
4. average prices per seer of seed used	x	x	0.25
5. quantity of manure per acre in srs. chemical	x	x	1.10
6. quantity of manure per acre in mds. others	10.92	1.70	12.62
7. p.c. of other manure by sources	86.50	13.50	100.00
8. value of other manure per acre in Rs.	4.30	0.67	4.97
9. average price per md. of other manure in Rs.	x	x	0.39
10. value of chemical manure per acre in Rs.	x	x	0.60
11. average price per seer of chemical manure in Rs.	x	x	0.55
12. total value of manure per acre in Rs.	x	x	5.57
13. water charges per acre in Rs.	x	x	0.46
14. p.c. of manure value by sources - others	x	x	89.23
15. " " " " - chemicals	x	x	10.77
16. " " " " - total	x	x	100.00

a/d

National Sample Survey, Eleventh Round : August 1956 - February 1957

Table (1.40): Animal and human labour days and charges for different agricultural operations (for all crops combined) : All India

(reference period : July 1955 - June 1956)

sample villages : 1848

sample households : 5495

items	soil preparation	sowing etc.	harvesting etc.	all operations
(1)	(2)	(3)	(4)	(5)
<u>(a) animal</u>				
1. labour days per acre	12.81	5.31	4.41	22.53
2. percent of labour days	56.86	23.57	19.57	100.00
3. labour charges per acre	14.50	6.56	4.94	26.00
4. percent of labour charges	55.77	25.23	19.00	100.00
5. per day labour charges	1.13	1.24	1.12	1.15
<u>(b) human</u>				
1. labour days per acre	8.97	12.76	11.54	33.27
2. p.c. of labour days	26.96	38.35	34.69	100.00
3. labour charges per acre	9.01	10.82	11.01	30.84
4. p.c. of labour charges	29.22	35.08	35.70	100.00
5. per day labour charges	1.00	0.85	0.95	0.93

National Sample Survey, Eleventh Round : August 1956 - February 1957

Table (1.41): Total number of animal and human labour days and charges utilised per acre by sources of supply actual and percentage distribution by sources for all crops combined : All India

(reference period : July 1956 - June 1957)

sample villages : 1848

sample households : 5495

items	household	hired	exchange	total
(1)	(2)	(3)	(4)	(5)
<u>(a) animal</u>				
1. labour days per acre	19.69	1.23	1.61	22.53
2. percent of labour days	87.38	5.46	7.16	100.00
3. labour charges per acre	22.72	1.42	1.86	26.00
<u>(b) human</u>				
1. labour days per acre	21.80	10.58	0.89	33.27
2. percent of labour days	65.53	31.80	2.67	100.00
3. labour charges per acre	20.21	9.81	0.82	30.84

a/d

National Sample Survey, Eleventh Round : August 1956 - February 1957

Table (1.42) : Balance of value of production of crops per acre :
All-India.

(Reference period : July 1955 - June 1956)

sample village : 1848 .

sample households: 5495
Rupees

crop	gross value of production	value of items of input				total input (3+4+5+6)	balance of value of production (2-7)
		cost of seed	cost of manure	water charges	animal labour cost		
(1)	(2)	(3)	(4)	(5)	(6)	(7)	(8)
1. paddy	122.49	10.38	8.33	0.48	24.48	43.67	78.82
2. wheat	96.74	12.87	3.65	0.89	46.13	63.54	33.20
3. jowar	43.66	1.75	3.04	0.12	17.09	22.00	21.66
4. bajra	37.52	1.24	3.81	0.05	19.27	24.37	13.15
5. barley	103.88	15.05	6.48	0.81	63.30	85.64	18.24
6. maize	78.44	3.69	12.88	0.19	28.35	45.11	33.33
7. ragi	71.81	2.59	15.86	0.31	24.50	43.26	28.55
8. gram	49.43	6.71	0.58	0.23	29.60	37.12	12.31
9. small millets	29.64	1.31	3.57	0.03	19.25	24.16	5.48
10. groundnut	66.50	12.37	4.91	0.20	18.77	36.25	30.25
11. cotton	66.05	2.51	6.10	0.25	19.22	28.08	37.97
12. jute	215.40	5.91	9.22	-	38.12	53.25	162.15
13. minor cereals	47.37	3.86	6.03	0.11	22.32	32.32	15.05
14. arhar	53.69	2.60	2.13	0.01	13.22	17.96	35.73
15. urdh	50.15	4.45	1.65	0.03	11.96	18.09	32.06
16. moong	26.42	3.65	1.48	0.00	10.02	15.15	11.27
17. musur	78.81	8.52	1.72	0.00	21.80	32.04	46.77
18. other pulses	34.15	5.62	1.42	0.35	13.98	21.37	12.78
19. total pulses	41.69	4.75	1.63	0.18	13.52	20.08	21.61
20. sugarcane	305.13	42.66	24.95	6.99	72.18	146.78	158.35
21. rapeseed & mustard	72.26	2.69	3.62	0.29	15.56	22.16	50.10
22. sesamum	29.59	3.47	1.45	0.01	7.12	12.05	17.54
23. linseed	30.08	4.13	0.37	0.02	8.17	12.69	17.39
24. castor	28.03	2.12	1.01	-	8.60	11.73	16.30
25. other oil seeds	29.38	2.03	0.93	0.05	8.85	11.86	17.52
26. total oil seeds	38.62	3.06	1.45	0.08	9.71	14.30	24.32
27. potato	432.80	102.84	46.46	5.73	41.10	196.13	236.67
28. spices	210.77	12.11	22.03	0.32	42.49	76.95	133.82
29. tobacco	271.11	2.03	26.13	6.30	33.45	67.91	203.20

National Sample Survey, Eleventh Round : August 1956 - February 1957

Table (1.43) : Percentage distribution of balance of value of production for major & minor crops : All-India
(Reference period : July 1955 - June 1956)

sample villages : 1848

sample households: 5495

crop	gross value of production	value of items of input					balance of value of production (2-7)
		cost of seed	cost of manure	water charges	animal labour cost	total input (3+4+5+6)	
(1)	(2)	(3)	(4)	(5)	(6)	(7)	(8)
1. paddy	100.00	8.47	6.80	0.39	19.99	35.65	64.35
2. wheat	100.00	13.30	3.77	0.92	47.69	65.68	34.32
3. jowar	100.00	4.01	6.96	0.27	39.14	50.38	49.62
4. bajra	100.00	3.30	10.15	0.13	51.36	64.94	35.06
5. barley	100.00	14.49	6.24	0.78	60.94	82.45	17.55
6. maize	100.00	4.70	16.42	0.24	36.14	57.50	42.50
7. ragi	100.00	3.61	22.09	0.43	34.12	60.25	39.75
8. gram	100.00	13.57	1.17	0.47	59.88	75.09	24.91
9. small millets	100.00	4.42	12.04	0.10	64.95	81.51	18.49
10. groundnut	100.00	18.60	7.38	0.30	28.23	54.51	45.49
11. cotton	100.00	3.80	9.24	0.38	29.10	42.52	57.48
12. jute	100.00	2.74	4.28	-	17.70	24.72	75.28
13. minor cereals	100.00	8.15	12.73	0.23	47.12	68.23	31.77
14. arhar	100.00	4.84	3.97	0.02	24.62	33.45	66.55
15. urdh	100.00	8.87	3.29	0.06	23.85	36.07	63.93
16. mung	100.00	13.82	5.60	0.00	37.93	57.35	42.65
17. musur	100.00	10.81	2.18	0.00	27.66	40.65	59.35
18. other pulses	100.00	16.46	4.16	1.02	40.94	62.58	37.42
19. total pulses	100.00	11.39	3.91	0.43	32.43	48.16	51.84
20. sugarcane	100.00	13.98	8.18	2.29	23.66	48.11	51.89
21. rape & mustard	100.00	3.72	5.01	0.40	21.53	30.66	69.34
22. sesamum	100.00	11.73	4.90	0.03	24.06	40.72	59.28
23. linseed	100.00	13.73	1.23	0.07	27.16	42.19	57.81
24. castor	100.00	7.56	3.60	-	30.68	41.84	58.16
25. other oil seeds	100.00	6.91	3.17	0.17	30.12	40.37	59.63
26. total oil seeds	100.00	7.92	3.75	0.21	25.14	37.02	62.98
27. potato	100.00	23.76	10.73	1.32	9.50	45.31	54.69
28. spices	100.00	5.75	10.45	0.15	20.16	36.51	63.49
29. tobacco	100.00	0.75	9.64	2.32	12.34	25.05	74.95

National Sample Survey, Eleventh Round : August 1956 - February 1957

Table (1.44) : Value and cost of production of other harvests per household : All-India
Agricultural holding class : 1 & 2
(Reference period : July 1955 - June 1956)

sample villages : 1848

sample households: 7275

Rupees						
item	value of production	cost of production			total input (3)+(5)	
		material cost	labour cost			
(1)	(2)	(3)	human (4)	animal (5)	(6)	(7)
1. mango	3.39	0.02	0.27	0.01	0.28	0.03
2. citrus	0.04	0.01	0.02	0.00	0.02	0.01
3. banana	0.87	0.26	0.14	0.04	0.18	0.30
4. other fruits	1.59	0.02	0.22	0.06	0.28	0.07
5. coconuts	2.55	0.22	0.49	0.05	0.54	0.27
6. arecanuts	0.74	0.22	0.18	0.02	0.20	0.05
7. other nuts	1.08	0.05	0.07	0.02	0.09	0.07
8. betel leaves	0.30	0.04	0.14	0.07	0.21	0.11
9. bamboo	0.79	0.02	0.07	0.01	0.08	0.02
10. cane, hogla	1.12	0.05	0.37	0.00	0.37	0.05
11. other reeds	0.12	0.01	0.03	0.00	0.03	0.01
12. fuel wood	4.58	0.48	2.02	0.31	2.33	0.79
13. timber	0.02	-	0.01	0.00	0.01	0.00
14. soft wood	0.02	-	0.00	-	0.00	-
15. fodder	11.22	0.60	2.71	1.68	4.39	2.28
16. grass	10.84	2.69	4.72	0.37	5.09	3.07
17. flowers	0.16	0.02	0.04	0.00	0.04	0.02
18. toddy	0.02	-	0.00	-	0.00	-
19. others	1.99	0.14	0.50	0.10	0.60	0.24
20. total	41.44	4.65	11.99	2.75	14.74	7.39

National Sample Survey, Eleventh Round : August 1956 - February 1957

Table (1.45) : Percentage distribution of value and cost of other harvests. : All-India

(Agricultural holding class 1 & 2)

(Reference period : July 1955 - June 1956)

sample villages : 1848

All-India

sample households : 7275

item	value of production	cost of production				total input
		material cost	labour cost		total	
			human	animal		
(1)	(2)	(3)	(4)	(5)	(6)	(7)
1. mango	8.17	0.47	2.28	0.35	1.92	0.42
2. citrus	0.10	0.15	0.16	0.02	0.14	0.10
3. banana	2.10	5.63	1.15	1.46	1.21	4.08
4. other fruits	3.84	0.38	1.84	2.04	1.88	1.00
5. coconuts	6.15	4.76	4.11	1.74	3.66	3.64
6. arecanuts	1.78	0.52	1.50	0.84	1.38	0.64
7. other nuts	2.61	0.97	0.59	0.78	0.62	0.90
8. betel leaves	0.73	0.95	1.19	2.55	1.44	1.54
9. bamboo	1.92	0.32	0.59	0.20	0.52	0.28
10. cane, sugarcane	2.70	1.06	3.05	0.05	2.49	0.69
11. other reeds	0.30	0.21	0.24	0.08	0.21	0.16
12. fuel wood	11.04	10.24	16.86	11.31	15.82	10.64
13. timber	0.05	-	0.04	0.08	0.05	0.03
14. soft wood	0.04	-	0.00	-	0.00	-
15. fodder	27.08	12.95	22.55	61.20	29.76	30.88
16. grass	26.16	57.92	39.33	13.62	34.54	41.45
17. flowers	0.40	0.40	0.32	0.00	0.26	0.25
18. toddy	0.04	-	0.03	-	0.02	-
19. others	4.79	3.07	4.17	3.68	4.08	3.30
20. total	100.00	100.00	100.00	100.00	100.00	100.00

AR.

National Sample Survey, Eleventh Round : August 1956 - February 1957

Table (1.46) : Percentage distribution of balance of value of production of other harvests : All India
(reference period : July 1955 - June 1956)

sample villages : 1848

Agricultural holdings class - 1 & 2

sample households : 7275

	item	value of production	cost of production			total input (3)+(5)	balance of value of production (2)-(7)	
			material cost	labour cost				
	(1)	(2)	(3)	human (4)	animal (5)	total (6)	(7)	(8)
1.	mango	100.00	0.65	8.09	0.28	8.37	0.93	99.07
2.	citrus	100.00	17.42	48.44	1.10	49.54	18.52	81.48
3.	banana	100.00	30.15	15.35	4.64	20.49	34.79	65.21
4.	other fruits	100.00	1.10	13.91	3.53	17.44	4.63	95.37
5.	cocconuts	100.00	8.67	19.30	1.87	21.17	10.54	89.46
6.	arecanuts	100.00	3.30	24.42	3.12	27.54	6.42	93.78
7.	other nuts	100.00	4.18	6.53	1.98	8.51	6.16	93.84
8.	betel leaves	100.00	14.63	47.24	23.22	70.46	37.85	62.15
9.	bamboo	100.00	1.89	8.88	0.70	9.58	2.59	97.41
10.	cane, hogla	100.00	4.42	32.66	0.12	32.78	4.54	95.46
11.	other reeds	100.00	7.76	23.41	1.67	25.08	9.43	90.57
12.	fuel wood	100.00	10.40	44.17	6.80	50.97	17.20	82.80
13.	timber	100.00	-	25.67	11.57	37.24	11.57	88.43
14.	soft wood	100.00	-	3.37	-	3.37	-	100.00
15.	fodder	100.00	5.36	24.10	14.99	39.09	20.35	79.65
16.	grass	100.00	24.83	43.51	3.45	46.96	28.28	71.72
17.	flowers	100.00	11.25	23.43	0.02	23.45	11.27	88.73
18.	toddy	100.00	-	18.14	-	18.14	-	100.00
19.	others	100.00	7.18	25.16	5.10	30.26	12.28	87.72
20.	total	100.00	11.22	28.94	6.63	35.57	17.85	82.15

a/a

National Sample Survey, Eleventh Round : August 1956 - February 1957

Table (1.47) : Per household and percentage distribution of balance of value of production for other harvests : All India.

(reference period : July 1955 - June 1956)

sample villages : 1848

sample households : 7275

item.	balance of value of production	
	per household	percentage
(1)	(2)	(3)
1. mango	3.36	9.86
2. citrus	0.03	0.10
3. banana	0.57	1.66
4. other fruits	1.51	4.46
5. cocoanuts	2.28	6.70
6. arecanuts	0.70	2.03
7. other nuts	1.01	2.98
8. betel leaves	0.19	0.55
9. bamboo	0.77	2.27
10. cane hogla	1.07	3.14
11. other reeds	0.11	0.33
12. fuel wood	3.79	11.13
13. timber	0.02	0.05
14. soft wood	0.02	0.05
15. fodder	8.94	26.26
16. grass	7.78	22.83
17. flowers	0.14	0.43
18. toddy	0.02	0.05
19. others	1.74	5.12
20. total	34.04	100.00

d/d : 5.3.67

National Sample Survey, Eleventh Round : August 1956 - February 1957

Table (1.48): Some ratio estimates : All India

(reference period : July 1955 - June 1956)

sample villages : 1848

sample households : 5495

crop	area har-vested as p.c. of area sown	prod. of crop per unit quantity of seed	value per maund of crop in Rs.	value per maund of straw in Rs.
(1)	(2)	(3)	(4)	(5)
1. paddy	95	13.67	8.72	1.16
2. wheat	99	7.75	13.07	1.81
3. jowar	94	27.61	9.77	1.47
4. bajra	93	32.70	10.27	1.94
5. barley	98	7.54	9.96	1.87
6. maize	89	27.54	9.21	1.02
7. ragi	98	33.21	7.98	1.07
8. gram	96	8.34	9.26	1.35
9. small millets	96	24.15	7.03	0.97
10. groundnut	98	9.87	10.79	1.47
11. cotton	96	14.10	26.67	0.94
12. jute	90	59.34	20.87	1.26
13. minor cereals	92	19.29	6.16	1.21
14. arhar	88	25.34	10.80	1.47
15. urdh	85	11.71	16.78	1.67
16. moong	89	9.86	12.15	1.32
17. musur	89	9.22	12.64	1.75
18. other pulses	95	6.32	8.53	2.03
19. total pulses	91	9.05	10.54	1.78
20. sugarcane	95	10.35	1.47	0.61
21. rape & mustard	85	38.82	18.45	0.72
22. sesamum	91	18.43	20.87	0.76
23. linseed	89	7.52	17.42	1.31
24. castor	97	11.60	12.88	0.21
25. other oil seeds	89	17.04	14.26	1.04
26. total oil seeds	89	15.56	17.30	0.88
27. potato	100	15.54	6.71	0.76
28. spices	95	15.70	27.78	0.53
29. tobacco	92	846.49	34.62	-

d/d

Sample Design and Procedure of Estimation

Design of Survey

1. A two stage stratified sampling design was adopted for rural areas^{1/}. Stratification was done in such a way that (i) the strata were approximately homogeneous with respect to the proportion of agricultural labourers to total rural population and (ii) that the strata sizes were more or less equal, size being the rural population.
2. These strata were selected from the zones formed according to Agricultural Labour Enquiry (ALE) Committee's report. Consideration was taken that these strata did not cut across the ALE Zones formed by the Labour Ministry in 1950-51.
3. The ultimate strata so formed were groups of districts in general.
4. Allocation of villages to the strata was made on the basis of their respective rural population with the restriction that each stratum got multiple of 24 sample units (i.e., sample villages).
5. From each stratum the required number of sample villages^{2/} was selected with probability proportional to rural population with replacement. The sample villages were then split up into 6 independent sub-samples (sub-rounds). The villages of different samples were surveyed in different months in the numerical order of the sub-samples i.e., first sub-sample in first month, second sub-sample in second month and so on.

1/ Socio-economic surveys.

2/ In certain areas, size of the sample villages was very large which resulted in heavy demand on investigators' time for listing households. In such cases only one hamlet comprising a very big village was selected. In case there was no recognised hamlet but groups of distinct geographical blocks of households in the village, then each block was treated as one hamlet for purpose of hamlet selection.

When the total number of households in a village exceeded 350 and there was more than one hamlet, the household inquiry was done in a single hamlet chosen in a presented manner and not in the whole village.

3/ "A group of persons will constitute a household, who usually pass night under the same roof and ordinarily take food from the same kitchen. Whether the person is normally resident in the household or not is left to the judgement of household concerned" para 23.02 Instructions to Field Workers, NSS 11th round.

6. The total number of sample villages selected from all over India was 1848. In each selected sample village all the households were listed separately in two groups namely (i) households which had no cultivated land (agricultural holding class 1) and (ii) households which had cultivated land (agricultural holding class 2).

7. The number of households selected from agricultural holding classes 1 and 2 were 1 and 3 respectively, the total being 4. The sample households were selected systematically with separate frame and random start for each class. If the total number of households in the list was less than the total number of sample households to be surveyed in any one class, then all the households of that class were sampled and the deficit was made up by sampling the extra households from the other class bringing the total number of sample households to 4. For example, if it was found that there was not a single household in agricultural holding class 1 then all the 4 sample households were selected from agricultural holding class 2.

8. For presenting the results 2 sub-samples were formed independently in such a way that all the 6 sub-rounds (referred as sub-samples in Instructions to Field Workers) were well represented in the sub-samples newly formed. This was done in order to eliminate the period bias.

9. Table (A 3.1) gives the sample size by sub-samples for each re-organised State (prior to reorganisation of States) and All-India for agricultural holding classes 1, 2 and combined.

10. Below is given the formula for multipliers and for estimation of any household characteristic.

particulars of sample units	operational stages and selection	no. of units per stratum population	no. of units per stratum sample	probability of selection of sample units
(1)	(2)	(3)	(4)	(5)
1. tehsil in the stratum	first	N	n	II_i
2. villages in the i th sample tehsil	second	N_i	n_i	II_{ij}
3. households in the j th sample village of i th sample tehsil	third	N_{ij}	n_{ij}	$II_{ijk} = \frac{1}{N_{ij}}$

where $\Pi_i = \frac{P_i}{P} = \frac{\text{population (1951) of } i\text{th tehsil}}{\text{stratum population built up from the tehsil population}}$

$\Pi_{ij} = \frac{P_{ij}}{P_i} = \frac{\text{population (1951) of the } j\text{th village in the } i\text{th tehsil}}{\text{population of the } i\text{th tehsil built up from the village population}}$

where $P_i = P_i$ in practice

The multiplier (M_{ij}) for the sample village is calculated as

$$M_{ij} = \frac{1}{n} \frac{1}{\pi_i} \frac{1}{n_i} \frac{1}{\pi_{ij}} \frac{1}{\pi_{ijk}}$$

11. The estimate of total of any household characteristic say x_{ijk} , for a stratum will be

$$\frac{1}{n} \sum_{i=1}^n \frac{1}{\pi_i} \frac{1}{n_i} \sum_{j=1}^{n_i} \frac{1}{\pi_{ij}} \frac{1}{n_{ijk}} \sum_{k=1}^{n_{ijk}} x_{ijk}$$

n_{ijk} , refers to k th household of agricultural holding class 1 of j th village of the i th stratum.

12. All India estimates were obtained by summing up all the strata estimates.

13. Ratio estimates were obtained by taking ratios of estimates of numerator and denominator.

Table in Appendix II

2.1 Total number of sample villages and households by households by States and sub-samples for agricultural holding class 1 and 2 and combined.

National Sample Survey, Eleventh Round : August 1956 - February 1957

Table (2.1) : Total number of sample villages and households by states and sub-samples for agricultural holding class 1 and 2 combined.

(reference period : July 1955 - June 1956)

zone and state	villages			households								
	sub- sample 1	sub- sample 2	total	agricultural holding class - 1			agricultural holding class - 2			agricultural holding class 1 & 2		
				sub- sample 1	sub- sample 2	total	sub- sample 1	sub- sample 2	total	sub- sample 1	sub- sample 2	total
(1)	(2)	(3)	(4)	(5)	(6)	(7)	(8)	(9)	(10)	(11)	(12)	(13)
Uttar Pradesh	156	156	312	151	149	300	468	473	941	619	622	1241
Madhya Pradesh	80	86	166	75	88	163	240	255	495	315	343	658
Central zone	236	242	478	226	237	463	708	728	1436	934	965	1899
Bihar	94	92	186	90	95	185	271	265	536	361	360	721
West Bengal	62	64	126	64	64	128	184	192	376	248	256	504
Orissa	36	36	72	35	35	70	105	109	214	140	144	284
Assam, Manipur, Tripura	36	36	72	34	25	59	90	107	197	124	132	256
Eastern zone	228	228	456	223	219	442	650	673	1323	873	892	1765
Andhra Pradesh	73	72	145	73	70	143	211	213	424	284	283	567
Madras	58	61	119	59	61	120	173	178	351	232	239	471
Kerala	30	33	63	34	33	67	87	99	186	121	132	253
Southern zone	161	166	327	166	164	330	471	490	961	637	654	1291
Bombay	103	98	201	98	95	193	308	292	600	406	387	793
Mysore & Coorg	52	46	98	52	46	98	156	138	294	208	184	392
Western zone	155	144	299	150	141	291	464	430	894	614	571	1185
Rajasthan	48	48	96	36	42	78	151	143	294	187	185	372
Punjab, Delhi, Himachal Pradesh	48	48	96	52	47	99	140	140	280	192	187	379
Jammu & Kashmir	48	48	96	39	38	77	154	153	307	193	191	384
Northern zone	144	144	288	127	127	254	445	436	881	572	563	1135
All-India	924	924	1848	892	888	1780	2738	2757	5495	3630	3645	7275

d/d : 5.3.67

Validity of Results

3.1. As no all India survey was carried on a country-wide basis for providing estimates of cost of cultivation of crops except the surveys referred to in NSS report no.32 on 'some Aspects of Cost of Cultivation' already published, it is not possible to apply external checks, here. However, an attempt has been made to compare the consistency of sub-sample estimates and the results obtained from different rounds of NSS (fifth to seventh rounds).

3.2. Sub-sample comparison : All the sample villages were divided into 2 sets of independent and interpenetrating sub-samples. Estimates presented in this Appendix are given by samples so that divergence between the sub-sample estimates could be checked. The first three tables (3.1) to (3.3) give percentage distributions of sample households, number of persons and number of persons per household by states. Tables (3.4) to (3.6) present area particulars of the household by sub-samples while sub-sample estimates of agricultural implements and equipments etc. and other expenses are given in Tables (3.7) to (3.9). It may be pointed out that tables(3.4) to (3.9) refer to agricultural holding class 1 and 2 combined. Percentage distribution of disbursement of all crops combined for agricultural holding class 2 only is given in table (3.10). Tables (3.11) to (3.15) present sub-sample estimates of quantity of seed, manure, human and animal labour utilised and production of crops per acre for agricultural holding class 2 only. Tables (3.16) to (3.21) give sub-sample estimates of other harvests for agricultural holding class 1 and 2 combined.

3.3. These tables reveal that there is a consistency between sub-samples for most of the items. At the same time, it may be pointed out that for some of the minor crops the results are not very encouraging. There is a divergence between the sub-sample estimates. These should be used with caution.

3.4. Inter-round comparison : Comparison of results presented in this report with those from NSS fifth to seventh rounds presented in

no.32 shows that the present results are more or less consistent with the previous ones for most of the items. Tables (3.22) to (3.28) can be referred for this purpose. Following points are revealed from these tables :

(a) There was a general increase of quantity of seeds used for different crops. The crops for which there was a decrease in the quantity used were jute, minor cereals and other oil seeds. The crops which showed large departure from the previous results were pulses, potato, spices and tobacco.

(b) On the other hand, there was a general decrease of the quantity of manure used for different crops except for arhar, urdh, moong, potato and tobacco, where considerable increase is noted.

(c) Significant departure from previous results was noticed for labour days utilized for pulses, oil seeds, potato, maize and ragi. This change was noticed for both human and animal labour.

(d) Comparison of quantity of crop produced per acre for different crops shows that there was definite decrease in production of sugarcane. For most of the other crops there was a general increase which, however, was not very significant.

(e) The balance of value of production of most of the crops has decreased. For some crops it has decreased considerably. For instance, for small millets it has decreased from 41 to 18 per cent, for bajra from 50 to 35, for arhar from 76 to 67, for masur 48 to 39, for total pulses 62 to 52, for rape and mustard 78 to 69, for ragi 54 to 40 and tobacco 90 to 75.

The crops which suffered most were obviously small millets, pulses, and tobacco. The reason for such a big change might be that for these crops cost of seed and manure and also the labour utilized increased considerably, but as for as value of the crop was concerned it did not fetch high value in comparison to the cost of production.

(f) The crops which showed higher balance of value of production were linseed and potato. But these changes were not so significant as to compensate the recorded decrease of balance of value of production for other crops already stated.

Appendix II

Validity of results

List of Tables

(a) <u>Sub-sample estimates</u>		<u>page no.</u>
Table 3.1	: Percentage distribution of sample households by states and sub-samples for agricultural holding class 1 & 2 combined	71
3.2	: Percentage distribution of number of persons by states and sub-samples	72
3.3	: Number of persons per household by states and sub-samples.	73
3.4	: Percentage distribution of area utilised by sources and sub-samples : All-India	74
3.5	: Sub-sample estimates of per household area utilised for different purposes : All-India.	75
3.6	: Sub-sample estimates of area possessed, cultivated and utilised for other purposes per person in acres : All-India.	76
3.7	: Sub-sample estimates of (per household and percentage) value of implements and equipments, All-India.	77
3.8	: Sub-sample estimates of (per household and percentage) value of expenditure on implements and equipments : All-India.	78
3.9	: Sub-sample estimates of (per household and percentage) of value of other expenses : All-India.	79
3.10	: Sub-sample estimates of percentage distribution of all crops combined : All-India.	80
3.11	: Sub-sample estimates of seed used per acre : All-India.	81
3.12	: Sub-sample estimates of other manure used per acre : All-India.	82
3.13	: Sub-sample estimates of total number of human labour days utilised per acre by crops : All-India.	83
3.14	: Sub-sample estimates of total number of animal labour days utilised per acre by crops : All-India	84
3.15	: Sub-sample estimates of crop produced per acre : All-India.	85
3.16	: Sub-sample estimates of per household value of production of other harvests : All-India.	86
3.17	: Sub-sample estimates of per household cost of production of other harvests : All-India.	87

Table no. 3.18	:	Sub-sample estimates of per household value of total input and balance of value of production of other harvests : All-India.	88
3.19	:	Sub-sample estimates of percentage distribution of cost and value of production of other harvests : All-India.	89
3.20	:	Sub-sample estimates of percentage distribution of total input and balance of value of production for other harvests : All-India.	90
3.21	:	Sub-sample estimates of percentage distribution of balance of value of production of other harvests : All-India.	91

Validity of results

(b) comparison of results (NSS 5th-7th and 11th rounds)

Table no. 3.22	:	Comparison of seed used per acre : All-India.	92
3.23	:	Comparison of manure used per acre : All-India.	93
3.24	:	Comparison of human labour days utilised per acre for all agricultural operations : All-India.	94
3.25	:	Comparison of animal labour days utilised per acre for all agricultural operations : All-India.	95
3.26	:	Comparison of production of crop per acre : All-India	96
3.27	:	Comparison of balance of value of production per acre : All-India.	97
3.28	:	Comparison of percentage of balance of value of production : All-India.	98

National Sample Survey, Eleventh round : August 1956 - February 1957.

Table (3.1) : Percentage distribution of households by states and sub-samples.

(reference period : July 1955 - June 1956)

zone and state	sub-sample		
	1	2	comb.
(1)	(2)	(3)	(4)
Uttar Pradesh	17.50	18.30	17.90
Madhya Pradesh	7.44	9.06	8.24
Central Zone	24.94	27.36	26.14
Bihar	12.92	11.56	12.26
West Bengal	6.92	6.99	6.95
Orissa	4.91	4.97	4.94
Assam, Manipur, Tripura	3.81	3.70	3.75
Eastern Zone	28.56	27.22	27.90
Andhra Pradesh	8.40	8.76	8.58
Madras	8.19	7.94	8.06
Kerala	3.27	3.39	3.33
Southern Zone	19.86	20.09	19.97
Bombay	11.07	10.20	10.64
Mysore & Coorg	5.49	5.12	5.31
Western Zone	16.56	15.32	15.95
Rajasthan	4.47	4.31	4.39
Punjab, Delhi, Himachal Pradesh	4.77	4.77	4.77
Jammu & Kashmir	0.84	0.93	0.88
Northern Zone	10.08	10.01	10.04
All-India	100.00	100.00	100.00
(i) sample villages	924	924	1843
(ii) sample households	3630	3645	7275

National Sample Survey, Eleventh round ; August 1956 - February 1957

Table (3.2) : Percentage distribution of number of persons by states and sub-samples.

(reference period : July 1955 - June 1956).

zone and state	percentage		
	sub-sample 1	sub-sample 2	combined
(1)	(2)	(3)	(4)
Uttar Pradesh	17.12	18.47	17.79
Madhya Pradesh	7.37	8.86	8.10
Central Zone	24.49	27.33	25.89
Bihar	13.40	12.60	13.02
West Bengal	6.78	6.68	6.73
Orissa	4.79	4.81	4.80
Assam, Manipur, Tripura	3.38	3.33	3.35
Eastern Zone	28.35	27.42	27.90
Andhra Pradesh	8.05	8.35	8.20
Madras	7.71	7.25	7.48
Kerala	3.45	3.89	3.66
Southern Zone	19.21	19.49	19.34
Bombay	11.54	10.18	10.87
Mysore & Coorg	5.93	5.32	5.63
Western Zone	17.47	15.50	16.50
Rajasthan	4.93	4.16	4.55
Punjab, Delhi, Himachal Pradesh	5.03	5.43	5.23
Jammu & Kashmir	0.52	0.67	0.59
Northern Zone	10.48	10.26	10.37
All-India	100.00	100.00	100.00
(i) sample villages	924	924	1848
(ii) sample households	3630	3645	7275

dd.

National Sample Survey, Eleventh round : August 1956 - January 1957.

Table (3.3) : Number of persons per household by states and sub-samples.

(reference period : July 1955 - June 1956)

zone and state	sub-sample		comb.
	1	2	
(1)	(2)	(3)	(4)
Uttar Pradesh	4.82	4.93	4.88
Madhya Pradesh	4.88	4.78	4.83
Central Zone	4.84	4.88	4.86
Bihar	5.11	5.32	5.21
West Bengal	4.83	4.67	4.75
Orissa	4.81	4.73	4.77
Assam, Manipur, Tripura	4.37	4.40	4.39
Eastern Zone	4.89	4.92	4.91
Andhra Pradesh	4.73	4.66	4.69
Madras	4.64	4.46	4.55
Kerala	5.21	5.60	5.41
Southern Zone	4.77	4.74	4.76
Bombay	5.14	4.87	5.01
Mysore & Coorg	5.32	5.08	5.21
Western Zone	5.20	4.94	5.08
Rajasthan	5.44	4.72	5.09
Punjab, Delhi, Himachal Pradesh	5.20	5.57	5.38
Jammu & Kashmir	3.07	3.50	3.30
Northern Zone	5.13	5.01	5.07
All-India	4.93	4.89	4.91
(i) sample villages	924	924	1848
(ii) sample households	3630	3645	7275

National Sample Survey, Eleventh Round : August 1956-February 1957

Table (3.4) : Percentage distribution of area utilised by sources and sub-samples: all India (reference period : July 1955 - June 1956)

source of distribution	sub-sample		
	1	2	combined
(1)	(2)	(3)	(4)
(a) distribution of land by type of possession			
owned and possessed	83.95	85.66	84.79
leased in for share cropping	9.92	8.90	9.42
leased in on other terms	6.13	5.44	5.79
total	100.00	100.00	100.00
(b) distribution of area cultivated by seasons			
kharif - autumn, 1955	29.90	27.36	28.65
kharif - winter, 1955-56	37.21	38.51	37.85
rabi - spring, 1956	31.12	31.51	31.31
summer, 1956	1.77	2.62	2.19
total	100.00	100.00	100.00
net cultivated area	89.39	87.53	88.47
area used twice	10.61	12.47	11.53
(c) distribution of area cultivated and other areas by sources			
area cultivated - kharif -			
autumn 1955	24.05	23.14	23.61
" " - kharif -			
winter 1955-56	29.92	32.58	31.21
" " - rabi-spring			
1956	25.03	26.65	25.81
" " - summer 1956	1.43	2.21	1.80
area cultivated total	80.42	84.58	82.43
other cultivable areas	9.80	6.12	8.03
water areas	0.48	0.30	0.39
house site	0.99	1.01	1.00
others	8.31	7.99	8.15
total	100.00	100.00	100.00
(d) distribution of area by sources			
net cultivated area	78.62	82.75	80.58
other cultivable areas	10.71	6.84	8.88
water areas	0.52	0.34	0.43
house site	1.09	1.13	1.11
others	9.06	8.94	9.00
total	100.00	100.00	100.00
(i) sample villages	924	924	1848
(ii) sample households	3630	3645	7275

National Sample Survey, Eleventh Round : August 1956- February 1957

Table (3.5) : Sub-sample estimates of per household area utilised for different purposes: All India (reference period : July 1955 - June 1956)

source of distribution	sub-sample		
	1	2	combined
(1)	(2)	(3)	(4)
(a) land by type of possession			
owned and possessed	4.30	4.26	4.28
leased in for share cropping	0.51	0.44	0.48
leased in on other terms	0.31	0.27	0.29
total	5.12	4.97	5.05
(b) area cultivated by seasons			
kharif - autumn, 1955	1.40	1.28	1.34
kharif - winter, 1955-56	1.75	1.81	1.78
rabi - spring, 1956	1.46	1.48	1.47
summer, 1956	0.08	0.12	0.10
total	4.69	4.69	4.69
net cultivated area	4.20	4.11	4.15
area used twice	0.49	0.58	0.54
(c) area cultivated and other areas by sources			
area cultivated -			
kharif - autumn 1955	1.40	1.28	1.34
" kharif - winter 1955-56	1.75	1.81	1.78
" rabi - spring 1956	1.46	1.48	1.47
" summer, 1956	0.08	0.12	0.10
area cultivated total	4.69	4.69	4.69
other cultivable areas	0.57	0.34	0.46
water areas	0.03	0.02	0.02
house site	0.06	0.06	0.06
others	0.48	0.44	0.46
total	5.83	5.55	5.69
(d) area by sources			
net cultivated area	4.20	4.11	4.15
other cultivable areas	0.57	0.34	0.46
water areas	0.03	0.02	0.02
house site	0.06	0.06	0.06
others	0.48	0.44	0.46
total	5.34	4.97	5.15
(i) sample villages	924	924	1848
(ii) sample households	3630	3645	7275

National Sample Survey, Eleventh Round : August 1956-February 1957

Table (3.6) : Sub-sample estimates of area possessed, cultivated and utilised for other purposes per person in acres : All India (reference period : July 1955 - June 1956)

sources	Acres		
	sub-sample		
	1	2	combined
(1)	(2)	(3)	(4)
1. owned and possessed	0.87	0.87	0.87
2. leased in for share cropping	0.10	0.09	0.10
3. leased in on other terms	0.06	0.06	0.06
4. total land	1.03	1.02	1.03
5. cultivated - kharif - autumn	0.28	0.26	0.27
6. " - kharif - winter	0.35	0.37	0.36
7. " - rabi - spring	0.30	0.30	0.30
8. " - summer	0.02	0.03	0.02
9. cultivated - total	0.95	0.96	0.95
10. cultivated - net total	0.85	0.84	0.85
11. other cultivable areas	0.12	0.07	0.09
12. water areas	0.01	0.00	0.00
13. house site	0.01	0.01	0.01
14. others	0.10	0.09	0.09
15. total land usable (total of 10-14)	1.09	1.01	1.04
(i) sample villages	924	924	1848
(ii) sample households	3630	3645	7275

ss.

National Sample Survey, Eleventh Round : August 1956-February 1957

Table (3.7) : Sub-sample estimates of (per household and percentage) value of implements and equipments: All India (reference period : July 1955 - June 1956)

items (1)	percentage to total value			per household value (in Rs. 0.00)		
	s.s.1 (2)	s.s.2 (3)	combined (4)	s.s.1 (5)	s.s.2 (6)	combined (7)
1. plough (iron)	0.44	0.45	0.45	0.95	0.89	0.92
2. plough (wooden)	2.46	2.85	2.64	5.29	5.65	5.47
3. harrow	1.01	1.08	1.04	2.17	2.15	2.16
4. sickles	0.86	0.90	0.88	1.85	1.78	1.82
5. other instruments	3.36	3.44	3.40	7.22	6.82	7.02
6. pumps (electric)	2.08	3.48	2.74	4.47	6.90	5.66
7. pumps (others)	0.49	0.44	0.47	1.05	0.88	0.96
sub-total 1	10.70	12.64	11.62	23.00	25.07	24.01
8. persian wheel	2.05	1.38	1.73	4.41	2.73	3.58
9. other appliances	1.03	1.16	1.09	2.22	2.29	2.25
10. carts, boats	13.43	12.63	13.06	28.88	25.05	26.99
11. bunds, fencings	0.46	0.42	0.44	1.00	0.83	0.91
12. containers	0.35	0.89	0.61	0.76	1.77	1.26
13. tanks, wells	40.95	34.86	38.06	88.02	69.11	78.70
14. store house, sheds	6.06	7.16	6.58	13.03	14.20	13.60
15. cattle sheds	21.47	23.39	22.38	46.16	46.37	46.26
16. others	3.50	5.47	4.43	7.52	10.85	9.16
sub-total 2	89.30	87.36	88.38	192.00	173.20	182.71
17. total	100.00	100.00	100.00	215.00	198.27	206.72
(i) sample villages	924	924	1848			
(ii) sample households	3630	3645	7275			

ss.

National Sample Survey, Eleventh Round : August 1956 - February 1957

Table (3.8): Sub-sample estimates of (per household and percentage) value of expenditure on implements and equipments All-India (reference period : July 1955 - June 1956)

items	percentage to total			per household in Rs.		
	s.s.1 (2)	s.s.2 (3)	combined (4)	s.s.1 (5)	s.s.2 (6)	combined (7)
1. construction, improvements	-	-	-	-	-	-
(a) cost of materials	14.39	12.10	13.29	2.23	1.76	2.00
(b) hired labour charges	8.90	10.86	9.84	1.38	1.58	1.48
(c) total	23.29	22.96	23.13	3.61	3.34	3.48
2. purchase	22.55	15.80	19.33	3.49	2.30	2.91
3. sale	13.12	12.17	12.67	2.03	1.77	1.90
4. breakage etc.	2.02	5.60	3.73	0.31	0.82	0.56
5. repair and maintenance	-	-	-	-	-	-
(a) cost of materials	12.81	16.07	14.37	1.98	2.34	2.16
(b) hired labour charges	19.91	21.88	20.84	3.08	3.19	3.13
(c) total	32.72	37.95	35.21	5.06	5.53	5.29
6. hired charges	6.30	5.52	5.93	0.98	0.81	0.89
7. total expenditure	100.00	100.00	100.00	15.48	14.57	15.03
(i) sample villages	924	924	1848			
(ii) sample households	3630	3645	7275			

National Sample Survey, Eleventh Round : August 1956 - February 1957

Table (3.9): Sub-sample estimates (per household and percentage) distribution of value of other expenses,
All India (reference period : July 1955 - June 1956)

items	percentage of each item to total			per household other expenses in Rs.		
	s.s.1	s.s.2	combined	s.s.1	s.s.2	combined
(1)	(2)	(3)	(4)	(5)	(6)	(7)
1. ropes and cordages	34.32	38.30	36.20	2.49	2.58	2.54
2. insecticides	0.64	1.02	0.82	0.05	0.07	0.06
3. transport service	4.61	7.22	5.85	0.33	0.49	0.41
4. marketing charges	2.11	1.57	1.85	0.15	0.11	0.13
5. betterment levy	1.37	0.52	0.97	0.10	0.04	0.07
6. others	6.95	5.84	6.43	0.50	0.39	0.45
7. total	50.00	54.47	52.12	3.62	3.68	3.66
8. interest on loan	27.16	27.71	27.42	1.97	1.87	1.92
9. litigation	22.84	17.82	20.46	1.66	1.20	1.43
10. grand total	100.00	100.00	100.00	7.25	6.75	7.01
(i) sample villages	924	924	1848			
(ii) sample households	3630	3645	7275			

National Sample Survey, Eleventh Round: August 1956-February 1957

Table (3.10): Sub-sample estimates of percentage disbursement all crops combined.: All India (reference period : July 1955 - June 1956)

Agricultural holding class 1 + 2

item of disbursement	s.s.1	s.s.2	combined
(1)	(2)	(3)	(4)
1. consumed by household	43.85	48.47	46.17
2. share or rent	5.84	5.59	5.71
3. goods & services	3.86	3.86	3.86
4. crop loan	1.00	1.33	1.17
5. sold	34.03	30.84	32.43
6. wastage	0.28	0.96	0.62
7. stock	11.14	8.95	10.04
8. total	100.00	100.00	100.00
(i) sample villages	924	924	1848
(ii) sample households	3630	3645	7275

nsg.

National Sample Survey, Eleventh Round: August 1956-February 1957

Table (3.11): Sub-sample estimates of seed used per acre : All-India
(reference period : July 1955-June 1956)

crop	Seers		
	s.s.1	s.s.2	combined
(1)	(2)	(3)	(4)
1. paddy	37.78	35.60	36.64
2. wheat	32.52	33.87	33.17
3. jowar	4.88	4.49	4.68
4. bajra	3.07	3.33	3.18
5. barley	44.54	46.90	45.77
6. maize	9.55	11.78	10.66
7. ragi	11.53	7.68	9.36
8. gram	23.15	22.87	23.01
9. small millets	5.92	6.60	6.26
10. groundnut	22.02	25.71	23.92
11. cotton	7.01	6.94	6.98
12. jute	6.04	7.32	6.66
13. minor cereals	14.73	11.40	13.23
14. arhar	7.54	6.48	7.01
15. urdh	8.01	10.75	9.36
16. moong	8.13	7.90	7.99
17. musur	24.17	24.00	24.08
18. other pulses	21.61	19.63	20.62
19. total pulses	15.74	14.52	15.12
20. sugarcane	818.90	750.86	783.91
21. rape & mustard	4.30	3.76	4.05
22. sesamum	4.31	2.38	3.06
23. linseed	10.17	8.16	9.04
24. castor	6.55	8.23	7.48
25. other oil seeds	4.86	4.70	4.79
26. total oil seeds	6.18	5.24	5.68
27. potato	144.77	186.61	165.01
28. spices	14.25	25.58	19.29
29. tobacco	0.45	0.26	0.37
(i) sample villages	924	924	1848
(ii) sample households	2738	2757	5495

nsg.

National Sample Survey, Eleventh Round: August 1956-February 1957

Table (3.12): Sub-sample estimates of other manure used per acre :
All-India (reference period : July 1955-June 1956).

crop	Maunds		
	s.s.1	s.s.2	combined
(1)	(2)	(3)	(4)
1. paddy	16.07	17.26	16.69
2. wheat	9.96	13.77	11.79
3. jowar	6.93	7.60	7.27
4. bajra	7.58	9.23	8.26
5. barley	13.84	17.60	15.82
6. maize	41.14	37.76	39.46
7. ragi	35.40	30.59	32.69
8. gram	1.18	2.20	1.67
9. small millets	8.06	4.20	6.14
10. groundnut	10.17	11.72	10.97
11. cotton	12.88	12.34	12.62
12. jute	16.05	18.05	17.02
13. minor cereals	9.59	5.05	7.54
14. arhar	4.30	4.46	4.38
15. urdh	4.00	4.78	4.38
16. moong	3.35	1.85	2.43
17. musur	7.80	1.38	4.56
18. other pulses	1.96	2.70	2.33
19. total pulses	3.14	3.15	3.15
20. sugarcane	64.06	72.40	68.30
21. rape & mustard	5.32	5.93	5.59
22. sesamum	7.07	2.70	4.24
23. linseed	0.19	1.78	1.08
24. castor	1.18	2.66	2.01
25. other oil seeds	2.00	4.84	3.37
26. total oil seeds	3.06	3.46	3.27
27. potato	73.82	78.10	75.83
28. spices	27.17	50.31	37.45
29. tobacco	45.46	31.19	39.41
(i) sample villages	924	924	1848
(ii) sample households	2738	2757	5495

National Sample Survey, Eleventh Round: August 1956- February 1957

Table (3.13): Sub-sample estimates of total number of human labour days utilised in cultivation per acre by crops : All India (reference period : July 1955-June 1956)

crop	s.s.1	s.s.2	combined
(1)	(2)	(3)	(4)
1. paddy	51	48	50
2. wheat	32	32	32
3. jowar	19	19	19
4. bajra	17	20	19
5. barley	51	49	50
6. maize	43	43	43
7. ragi	54	53	53
8. gram	19	21	19
9. small millets	28	23	25
10. groundnut	25	30	28
11. cotton	24	26	24
12. jute	67	65	67
13. minor cereals	39	31	36
14. arhar	18	22	20
15. urdh	19	21	20
16. moong	24	15	18
17. musur	28	25	26
18. other pulses	19	18	18
19. total pulses	19	19	19
20. sugarcane	105	102	103
21. rape & mustard	20	21	20
22. sesamum	21	11	14
23. linseed	16	12	13
24. castor	12	13	13
25. other oil seeds	19	20	19
26. total oil seeds	18	15	16
27. potato	125	101	114
28. spices	63	90	76
29. tobacco	62	60	61
(i) sample villages	924	924	1848
(ii) sample households	2738	2757	5495

National Sample Survey, Eleventh Round: August 1956-February 1957

Table (3.14): Sub-sample estimates of total number of animal labour days utilised in cultivation per acre by crops: All India (reference period : July 1955 - June 1956)

crop	s.s.1	s.s.2	combined
(1)	(2)	(3)	(4)
1. paddy	33	30	31
2. wheat	30	33	32
3. jowar	12	13	13
4. bajra	10	12	11
5. barley	49	47	49
6. maize	23	24	23
7. ragi	33	29	31
8. gram	17	19	19
9. small millets	20	15	17
10. groundnut	13	13	13
11. cotton	12	11	12
12. jute	35	39	38
13. minor cereals	23	18	21
14. arhar	10	14	12
15. urdh	15	18	17
16. moong	13	10	12
17. masur	27	22	25
18. other pulses	15	12	14
19. total pulses	14	14	14
20. sugarcane	75	64	69
21. rape & mustard	19	18	19
22. sesamum	14	7	9
23. linseed	12	9	11
24. castor	9	9	8
25. other oil seeds	18	15	16
26. total oil seeds	15	11	13
27. potato	41	33	37
28. spices	24	33	28
29. tobacco	22	21	21
(i) sample villages	924	924	1848
(ii) sample households	2738	2757	5495

National Sample Survey, Eleventh Round: August 1956- February 1957

Table (3.15): Sub-sample estimates of crop produced per acre by crops:
All-India (reference period : (July 1955-June 1956)

crop	Maunds		
	s.s.1	s.s.2	combined
(1)	(2)	(3)	(4)
1. paddy	12.38	12.64	12.52
2. wheat	6.30	6.56	6.43
3. jowar	3.29	3.17	3.23
4. bajra	2.35	2.96	2.60
5. barley	7.97	9.22	8.63
6. maize	7.53	7.16	7.34
7. ragi	8.14	7.48	7.77
8. gram	4.73	4.88	4.80
9. small millets	3.83	3.74	3.78
10. groundnut	6.16	5.65	5.90
11. cotton	2.57	2.35	2.46
12. jute	9.63	10.14	9.88
13. minor cereals	7.64	4.86	6.38
14. arhar	4.43	4.45	4.44
15. urdh	2.50	2.97	2.74
16. moong	2.27	1.78	1.97
17. musur	6.53	4.60	5.55
18. other pulses	3.41	3.11	3.26
19. total pulses	3.57	3.28	3.42
20. sugarcane	213.14	193.01	202.80
21. rape & mustard	3.67	4.13	3.88
22. sesamum	1.96	1.11	1.41
23. linseed	1.68	1.71	1.70
24. castor	2.10	2.23	2.17
25. other oil seeds	2.02	2.05	2.04
26. total oil seeds	2.34	2.11	2.21
27. potato	58.23	70.44	64.12
28. spices	5.74	9.86	7.57
29. tobacco	7.09	8.85	7.83
(i) sample villages	924	924	1848
(ii) sample households	2738	2757	5495

National Sample Survey, Eleventh Round : August 1956 - February 1957

Table (3.16): Sub-sample estimates of per household value of production of other harvests;
All India (reference period : July 1955 - June 1956)

item	value (in Rs.) of production		
	s.s.1 (2)	s.s.2 (3)	combined (4)
1. mango	2.43	4.38	3.39
2. citrus	0.05	0.04	0.04
3. banana	1.17	0.55	0.87
4. other fruits	2.25	0.91	1.59
5. cocoanuts	2.33	2.77	2.55
6. arecanuts	0.26	1.23	0.74
7. other nuts	1.56	0.59	1.08
8. betel leaves	0.46	0.14	0.30
9. bamboo	0.81	0.78	0.79
10. cane, hogla	0.41	1.85	1.12
11. other reeds	0.16	0.08	0.12
12. fuel wood	4.52	4.63	4.58
13. timber	0.02	0.02	0.02
14. soft wood	-	0.03	0.02
15. fodder	9.92	12.56	11.22
16. grass	11.19	10.48	10.84
17. flowers	0.26	0.07	0.16
18. toddy	0.02	0.02	0.02
19. others	2.03	1.94	1.99
20. total	39.85	43.07	41.44
(i) sample villages	924	924	1848
(ii) sample households	3630	3645	7275

nsg.

National Sample Survey, Eleventh Round : August 1956 - February 1957

Table (3.17): Sub-sample estimates of per household cost of production of other harvests;
All India (reference period : July 1955 - June 1956)

items	Rupees					
	material cost			total labour cost		
	s.s.1	s.s.2	combined	s.s.1	s.s.2	combined
(1)	(2)	(3)	(4)	(5)	(6)	(7)
1. mango	0.02	0.02	0.02	0.24	0.33	0.28
2. citrus	0.01	-	0.01	0.02	0.02	0.02
3. banana	0.26	0.27	0.26	0.23	0.12	0.18
4. other fruits	0.01	0.03	0.02	0.15	0.40	0.28
5. cocoanuts	0.19	0.26	0.22	0.52	0.56	0.54
6. arecanuts	0.02	0.03	0.02	0.10	0.31	0.20
7. other nuts	0.05	0.04	0.05	0.05	0.13	0.09
8. betel leaves	0.05	0.04	0.04	0.33	0.10	0.21
9. bamboo	0.00	0.03	0.02	0.09	0.06	0.08
10. cane, hogla	0.02	0.08	0.05	0.20	0.54	0.37
11. other reeds	0.02	0.00	0.01	0.03	0.03	0.03
12. fuel wood	0.50	0.45	0.48	1.80	2.88	2.33
13. timber	-	-	-	0.01	0.01	0.01
14. soft wood	-	-	-	-	0.00	0.00
15. fodder	0.59	0.61	0.60	4.49	4.28	4.39
16. grass	2.30	3.09	2.69	5.20	4.98	5.09
17. flowers	0.03	0.00	0.02	0.06	0.01	0.04
18. toddy	-	-	-	0.01	0.00	0.00
19. others	0.22	0.07	0.14	0.69	0.51	0.60
20. total	4.29	5.02	4.65	14.22	15.27	14.74
(i) sample villages	924	924	1848			
(ii) sample households	3630	3645	7275			

National Sample Survey , Eleventh Round : August 1956 - February 1957

Table (3.18): Sub-sample estimates of per household value of total input and balance of value of production of other harvests; All India (reference period : July 1955 - June 1956)

items	Rupees					
	total input			balance of value of production		
	s.s.1	s.s.2	combined	s.s.1	s.s.2	combined
(1)	(2)	(3)	(4)	(5)	(6)	(7)
1. mango	0.02	0.04	0.03	2.40	4.34	3.36
2. citrus	0.01	-	0.01	0.03	0.04	0.03
3. banana	0.32	0.28	0.30	0.86	0.27	0.57
4. other fruits	0.03	0.11	0.07	2.21	0.80	1.51
5. cocoanuts	0.21	0.33	0.27	2.12	2.45	2.28
6. arecanuts	0.06	0.03	0.05	0.20	1.20	0.70
7. other nuts	0.06	0.06	0.07	1.49	0.52	1.01
8. betel leaves	0.19	0.04	0.11	0.27	0.10	0.19
9. bamboo	0.01	0.03	0.02	0.80	0.75	0.77
10. cane, hogla	0.02	0.08	0.05	0.39	1.77	1.07
11. other reeds	0.02	0.00	0.01	0.14	0.08	0.11
12. fuel wood	0.74	0.84	0.79	3.78	3.80	3.79
13. timber	0.00	0.00	0.00	0.02	0.02	0.02
14. soft wood	-	-	-	-	0.03	0.02
15. fodder	2.16	2.41	2.28	7.76	10.15	8.94
16. grass	2.76	3.38	3.07	8.43	7.10	7.78
17. flowers	0.03	0.00	0.02	0.22	0.06	0.14
18. toddy	-	-	-	0.02	0.02	0.02
19. others	0.27	0.22	0.24	1.76	1.72	1.74
20. total	6.91	7.88	7.39	32.90	35.22	34.04
(i) sample villages	924	924	1848			
(ii) sample households	3630	3645	7275			

National Sample Survey, Eleventh Round : August 1956-February 1957

Table (3.19) : Sub-sample estimates of percentage distribution of balance of value of production of other harvests; All India (reference period : July 1955 - June 1956)

item (1)	cost of production (Rs.0.00)						total input			balance of value of production		
	material			animal labour			s.s.1 (8)	s.s.2 (9)	combined (10)	s.s.1 (11)	s.s.2 (12)	combined (13)
	s.s.1 (2)	s.s.2 (3)	combined (4)	s.s.1 (5)	s.s.2 (6)	combined (7)						
1. mango	0.83	0.54	0.65	0.16	0.35	0.28	0.99	0.89	0.93	99.01	99.11	99.07
2. citrus	30.28	-	17.42	1.92	-	1.10	32.20	-	18.52	67.80	100.00	81.48
3. banana	21.92	48.09	30.15	5.22	3.37	4.64	27.14	51.47	34.79	72.86	48.53	65.21
4. other fruits	0.25	3.26	1.10	1.28	9.24	3.53	1.53	12.50	4.63	98.47	87.50	95.37
5. coconuts	8.03	9.22	8.67	1.05	2.59	1.87	9.08	11.81	10.54	90.92	88.19	89.46
6. arecanuts	6.16	2.68	3.30	17.61	-	3.12	23.77	2.68	6.42	76.23	97.32	93.78
7. other nuts	3.26	6.68	4.18	0.89	4.94	1.98	4.14	11.62	6.16	95.86	88.38	93.84
8. betel leaves	11.17	26.62	14.63	29.92	-	23.22	41.09	26.62	37.85	58.91	73.38	62.15
9. bamboo	0.56	3.31	1.89	0.73	0.67	0.70	1.29	3.98	2.59	98.71	96.02	97.41
10. cane, hogla	5.11	4.26	4.42	-	0.14	0.12	5.11	4.40	4.54	94.89	95.60	95.46
11. other reeds	10.19	2.79	7.76	2.26	0.50	1.67	12.45	3.29	9.43	87.55	96.71	90.57
12. fuel wood	11.14	9.65	10.40	5.19	8.41	6.80	16.33	18.06	17.20	83.67	81.95	82.80
13. timber	-	-	-	18.27	3.26	11.57	18.27	3.26	11.57	81.73	96.74	88.43
14. soft wood	-	-	-	-	-	-	-	-	-	-	100.00	100.00
15. fodder	5.96	4.88	5.36	15.80	14.34	14.99	21.76	19.21	20.35	78.24	80.79	79.65
16. grass	20.59	29.49	24.83	4.09	2.76	3.45	24.67	32.26	28.28	75.33	67.74	71.72
17. flowers	12.89	4.81	11.25	-	0.09	0.02	12.89	4.90	11.27	87.11	95.10	88.73
18. toddy	-	-	-	-	-	-	-	-	-	-	100.00	100.00
19. others	10.66	3.43	7.18	2.70	7.68	5.10	13.36	11.12	12.23	86.64	88.88	87.72
20. total	10.77	11.64	11.22	6.63	6.63	6.63	17.40	18.27	17.85	82.60	81.73	82.15
(i) sample villages	924	924	1848									
(ii) sample households	3630	3645	7275									

National Sample Survey, Eleventh Round : August 1956- February 1957

Table (3.20) : Sub-sample estimates of percentage distribution of total input and balance of value of production for other harvests ; All India (reference period : July 1955 - June 1956)

item	total input			balance of value of production		
	s.s.1	s.s.2	combined	s.s.1	s.s.2	combined
(1)	(2)	(3)	(4)	(5)	(6)	(7)
1. mango	0.35	0.50	0.42	7.30	12.33	9.86
2. citrus	0.21	-	0.10	0.09	0.10	0.10
3. banana	4.59	3.62	4.08	2.60	0.77	1.66
4. other fruits	0.49	1.45	1.00	6.72	2.27	4.46
5. cocoanuts	3.05	4.16	3.64	6.45	6.95	6.70
6. arecanuts	0.88	0.42	0.64	0.60	3.41	2.03
7. other nuts	0.93	0.87	0.90	4.54	1.48	2.98
8. betel leaves	2.73	0.46	1.54	0.83	0.29	0.55
9. bamboo	0.15	0.39	0.28	2.42	2.12	2.27
10. cane, hogla	0.30	1.04	0.69	1.19	5.02	3.14
11. other reeds	0.29	0.03	0.16	0.43	0.23	0.33
12. fuel wood	10.65	10.63	10.64	11.50	10.78	11.13
13. timber	0.06	0.01	0.03	0.05	0.05	0.05
14. soft wood	-	-	-	-	0.10	0.05
15. fodder	31.12	30.67	30.88	23.59	28.82	26.26
16. grass	39.79	42.97	41.45	25.60	20.17	22.83
17. flowers	0.48	0.04	0.25	0.68	0.18	0.43
18. toddy	-	-	-	0.06	0.04	0.05
19. others	3.92	2.74	3.30	5.35	4.89	5.12
20. total	100.00	100.00	100.00	100.00	100.00	100.00
(i) sample villages	924	924	1848			
(ii) sample households	3630	3645	7275			

National Sample Survey, Eleventh Round : August 1956-February 1957

Table (3.21) : Sub-sample estimates of percentage distribution of cost and value of production of other harvests, All-India (reference period : July 1955-June 1956)
(base: all other harvests - 100)

item	value of production			material cost			total labour cost		
	s.s.1	s.s.2	combined	s.s.1	s.s.2	combined	s.s.1	s.s.2	combined
(1)	(2)	(3)	(4)	(5)	(6)	(7)	(8)	(9)	(10)
1. mango	6.09	10.16	8.17	0.47	0.47	0.47	1.71	2.13	1.92
2. citrus	0.11	0.08	0.10	0.32	-	0.15	0.15	0.13	0.14
3. banana	2.94	1.29	2.10	5.99	5.31	5.63	1.65	0.78	1.21
4. other fruits	5.64	2.12	3.84	0.13	0.60	0.38	1.09	2.64	1.88
5. cocoanut	5.86	6.44	6.15	4.37	5.10	4.76	3.69	3.64	3.66
6. areca nuts	0.65	2.86	1.78	0.37	0.66	0.52	0.67	2.06	1.38
7. other nuts	3.91	1.37	2.61	1.18	0.79	0.97	0.36	0.88	0.62
8. betel leaves	1.16	0.32	0.73	1.20	0.73	0.95	2.29	0.62	1.44
9. bamboo	2.03	1.81	1.92	0.11	0.51	0.32	0.65	0.38	0.52
10. cane, hogla	1.03	4.29	2.70	0.49	1.57	1.06	1.42	3.52	2.49
11. other reeds	0.41	0.19	0.30	0.39	0.05	0.21	0.23	0.19	0.21
12. fuel wood	11.35	10.75	11.04	11.74	8.92	10.24	12.63	18.88	15.82
13. timber	0.05	0.04	0.05	-	-	-	0.06	0.04	0.05
14. soft wood	-	0.08	0.04	-	-	-	-	0.01	0.00
15. fodder	24.90	29.16	27.08	13.78	12.22	12.95	31.58	28.01	29.76
16. grass	28.07	24.34	26.16	53.64	61.68	57.92	36.53	32.62	34.54
17. flowers	0.65	0.16	0.40	0.77	0.06	0.40	0.43	0.10	0.26
18. toddy	0.05	0.04	0.04	-	-	-	0.04	0.01	0.02
19. others	5.10	4.50	4.79	5.05	1.33	3.07	4.82	3.36	4.08
20. total	100.00	100.00	100.00	100.00	100.00	100.00	100.00	100.00	100.00
(i) sample villages	924	924	1848						
(ii) sample house-holds	3630	3645	7275						

National Sample Survey, Eleventh round : August 1956 - February 1957

Table (3.22) : Comparison of seed used per acre, All-India
(reference period : July 1955 - June 1956).
NSS 5th-7th Rounds and Eleventh Round

crop	seed used in srs.			
	5th round	6th round	7th round	11th round
(1)	(2)	(3)	(4)	(5)
1. paddy	32.78	33.98	34.72	36.64
2. wheat	32.33	36.44	38.88	33.17
3. jowar	4.35	3.88	3.52	4.68
4. bajra	2.97	2.44	3.06	3.18
5. barley	38.12	44.79	45.99	45.77
6. maize	7.56	7.95	7.95	10.66
7. ragi	8.64	10.38	8.26	9.36
8. gram	22.23	24.48	27.01	23.01
9. small millets	5.48	7.63	7.11	6.26
10. groundnut	24.00	24.83	23.24	23.92
11. cotton	5.71	5.76	5.05	6.98
12. jute	8.76	6.97	8.97	6.66
13. minor cereals	15.11	15.05	15.49	13.23
14. arhar	5.27	4.25	6.20	7.01
15. urdh	7.39	5.67	6.73	9.36
16. moong	4.20	5.05	4.99	7.99
17. musur	21.66	19.17	23.57	24.08
18. other pulses	19.63	20.91	18.37	20.62
19. total pulses	10.14	10.80	10.58	15.12
20. sugarcane	775.44	863.24	860.97	783.91
21. rape & mustard	3.31	3.90	3.05	4.05
22. sesamum	2.32	1.49	1.74	3.06
23. linseed	6.09	8.86	8.83	9.04
24. castor	3.60	4.34	4.49	7.48
25. other oil seeds	5.79	5.53	4.93	4.79
26. total oil seeds	4.04	3.87	3.45	5.68
27. potato	136.85	126.86	123.53	165.01
28. spices	11.93	11.32	10.72	19.29
29. tobacco	0.10	0.09	0.11	0.37
(i) sample villages	946	956	959	1848
(ii) sample households	4287	4388	3144	5495

sg.

National Sample Survey, Eleventh round : August 1956 - February 1957

Table (3.23) : Comparison of manure used per acre All-India
(reference period : July 1955 - June 1956
NSS 5th-7th Rounds and Eleventh Round

crop	manure used in mds.			
	5th round	6th round	7th round	11th round
(1)	(2)	(3)	(4)	(5)
1. paddy	27.57	21.73	21.01	16.76
2. wheat	22.67	16.91	20.72	11.80
3. jowar	9.94	6.07	5.53	7.27
4. bajra	11.10	7.90	8.98	8.26
5. barley	16.41	16.47	17.61	15.84
6. maize	41.67	42.46	42.09	39.47
7. ragi	41.43	42.75	47.36	32.70
8. gram	3.59	3.74	3.01	1.67
9. small millets	5.68	6.20	7.50	6.14
10. groundnut	6.96	7.52	6.59	10.98
11. cotton	11.24	7.52	6.38	12.63
12. jute	34.43	27.79	32.86	17.02
13. minor cereals	11.08	8.12	8.15	7.54
14. arhar	2.39	1.98	1.16	4.38
15. urdh	1.56	2.16	2.80	4.38
16. moong	0.25	0.91	1.16	2.43
17. musur	3.57	5.63	5.04	4.56
18. other pulses	4.64	3.16	3.53	2.33
19. total pulses	3.01	2.94	3.19	3.15
20. sugarcane	67.65	63.60	69.22	68.67
21. rape & mustard	4.17	2.73	4.44	5.59
22. sesamum	1.59	3.87	3.80	4.24
23. linseed	-	-	-	1.08
24. castor	0.67	3.90	3.25	2.01
25. other oil seeds	0.74	0.84	1.02	3.37
26. total oil seeds	4.37	3.82	3.00	3.27
27. potato	57.04	53.94	56.38	76.29
28. spices	48.26	31.74	28.43	37.65
29. tobacco	31.81	23.56	25.41	39.51
(i) sample villages	946	956	959	1848
(ii) sample households	4287	4388	3144	5495

sg.

National Sample Survey, Eleventh round : August 1956-February 1957

Table (3.24) : Comparison of human labour days utilised per acre for all agricultural operations, All-India (reference period : July 1955 - June 1956) NSS 5th-7th Rounds and Eleventh Round

crop	human labour days			
	5th round	6th round	7th round	11th round
(1)	(2)	(3)	(4)	(5)
1. paddy	42	40	43	50
2. wheat	33	34	33	32
3. jowar	18	16	15	19
4. bajra	12	12	14	19
5. barley	45	42	43	50
6. maize	31	35	36	43
7. ragi	37	39	42	53
8. gram	19	20	20	19
9. small millets	15	23	22	25
10. groundnut	16	23	24	28
11. cotton	22	20	20	24
12. jute	68	58	61	67
13. minor cereals	35	34	31	36
14. arhar	14	10	11	20
15. urdh	12	10	14	20
16. moong	14	11	9	18
17. musur	25	25	25	26
18. other pulses	16	16	17	18
19. total pulses	13	13	14	19
20. sugarcane	102	106	110	103
21. rape & mustard	11	11	10	20
22. sesamum	10	8	10	14
23. linseed	9	9	10	13
24. castor	8	6	6	13
25. other oil seeds	13	13	12	19
26. total oil seeds	12	10	11	16
27. potato	114	100	108	114
28. spices	65	57	65	76
29. tobacco	48	47	55	61
(i) sample villages	946	956	959	1848
(ii) sample households	4287	4388	3144	5495

sg.

National Sample Survey, Eleventh round : August 1956-February 1957

Table (3.25) : Comparison of animal labour days utilised per acre for all agricultural operations; All-India (reference period : July 1955 - June 1956) NSS 5th-7th Rounds and Eleventh Round

crop	animal labour days			
	5th round	6th round	7th round	11th round
(1)	(2)	(3)	(4)	(5)
1. paddy	28	26	27	31
2. wheat	30	36	38	32
3. jowar	12	11	10	13
4. bajra	7	8	9	11
5. barley	40	45	49	49
6. maize	19	18	17	23
7. ragi	22	30	26	31
8. gram	15	19	22	19
9. small millets	10	14	15	17
10. groundnut	8	11	11	13
11. cotton	12	9	9	12
12. jute	40	48	55	38
13. minor cereals	21	20	21	21
14. arhar	7	4	6	12
15. urdh	10	7	9	17
16. moong	7	8	7	12
17. musur	21	20	21	25
18. other pulses	11	12	13	14
19. total pulses	8	8	8	14
20. sugarcane	53	63	68	69
21. rape & mustard	11	8	10	19
22. sesamum	7	6	8	9
23. linseed	7	10	10	11
24. castor	7	5	7	8
25. other oil seeds	10	13	11	16
26. total oil seeds	9	8	10	13
27. potato	54	49	48	37
28. spices	26	22	23	28
29. tobacco	21	20	20	21
(i) sample villages	946	956	959	1848
(ii) sample households	4287	4388	3144	5495

sg.

National Sample Survey, Eleventh round : August 1956-February 1957

Table (3.26) : Comparison of production of crop per acre All-India
(reference period : July 1955 - June 1956)
NSS 5th-7th Rounds and Eleventh Round

crop	production of crop in mds.			
	5th round	6th round	7th round	11th round
(1)	(2)	(3)	(4)	(5)
1. paddy	10.93	11.68	12.07	12.52
2. wheat	6.21	7.12	7.67	6.43
3. jowar	3.25	3.27	3.19	3.23
4. bajra	2.28	2.20	2.41	2.60
5. barley	7.56	8.72	8.62	8.63
6. maize	7.63	6.82	6.57	7.34
7. ragi	4.79	4.97	5.77	7.77
8. gram	4.14	4.58	5.00	4.80
9. small millets	2.70	3.90	3.26	3.78
10. groundnut	4.54	4.76	4.53	5.90
11. cotton	2.54	2.16	2.30	2.46
12. jute	8.42	10.26	11.78	9.88
13. minor cereals	6.73	5.59	5.56	6.38
14. arhar	3.26	3.11	3.51	4.44
15. urdh	2.00	1.63	2.07	2.74
16. moong	0.83	1.00	1.06	1.97
17. musur	4.77	4.49	4.93	5.55
18. other pulses	2.43	2.63	2.62	3.26
19. total pulses	2.67	2.42	3.07	3.42
20. sugarcane	213.44	259.92	251.51	202.80
21. rape & mustard	2.91	3.35	3.28	3.88
22. sesamum	0.92	1.31	1.24	1.41
23. linseed	1.08	1.70	1.75	1.70
24. castor	1.08	1.47	1.85	2.17
25. other oil seeds	1.43	1.48	1.34	2.04
26. total oil seeds	2.62	2.19	2.14	2.21
27. potato	66.92	63.31	63.06	64.12
28. spices	4.84	5.49	6.62	7.57
29. tobacco	7.54	7.15	7.26	7.83
(i) sample villages	946	956	959	1848
(ii) sample households	4287	4388	3144	5495

sg.

National Sample Survey, Eleventh round : August 1956-February 1957

Table (3.27) : Comparison of balance of value of production per acre
All-India (reference period July 1955 - June 1956)
NSS 5th-7th rounds and eleventh round

crop	per acre in Rs.			
	5th round	6th round	7th round	11th round
(1)	(2)	(3)	(4)	(5)
1. paddy	82.69	86.41	89.63	78.82
2. wheat	42.84	50.84	52.52	33.20
3. jowar	27.61	24.96	24.98	21.66
4. bajra	22.21	16.49	19.89	13.15
5. barley	34.85	29.28	25.37	18.24
6. maize	56.64	41.16	42.20	33.33
7. ragi	25.55	34.68	37.22	28.55
8. gram	21.27	22.64	26.43	12.31
9. small millets	14.48	13.85	12.98	5.48
10. groundnut	36.29	26.11	25.44	30.25
11. cotton	39.10	29.11	31.11	37.97
12. jute	191.79	187.39	184.25	162.15
13. minor cereals	26.84	17.21	15.35	15.05
14. arhar	32.46	30.68	33.60	35.73
15. urdh	18.49	16.25	17.61	32.06
16. moong	6.31	7.12	7.78	11.27
17. musur	32.81	27.23	31.73	46.77
18. other pulses	7.27	6.80	10.87	12.78
19. total pulses	21.34	21.96	23.42	21.61
20. sugarcane	180.96	227.07	191.19	158.35
21. rape & mustard	28.11	47.66	45.43	50.10
22. sesamum	9.16	16.23	12.01	17.54
23. linseed	5.99	12.32	11.91	17.39
24. castor	10.34	12.71	15.87	16.30
25. other oil seeds	11.48	10.30	12.31	17.52
26. total oil seeds	27.32	25.24	25.99	24.32
27. potato	195.15	189.98	212.23	236.67
28. spices	105.17	99.38	106.53	133.82
29. tobacco	386.99	381.00	365.22	203.20
(i) sample villages	946	956	959	1848
(ii) sample households	4287	4388	3144	5495

sg.

National Sample Survey, Eleventh Round : August 1956 - February 1957

Table (3.28) : Comparison of percentage of balance of value of production :
All-India, NSS 5th-7th rounds and 11th round

(reference period : July 1955 - June 1956)

crop	percentage			
	5th round	6th round	7th round	11th round
(1)	(2)	(3)	(4)	(5)
1. paddy	67.33	69.49	69.76	64.35
2. wheat	39.44	40.08	39.51	34.32
3. jowar	53.24	53.33	55.48	49.62
4. bajra	54.10	47.77	50.15	35.06
5. barley	30.60	24.83	21.39	17.55
6. maize	58.39	50.65	50.42	42.50
7. ragi	45.00	54.37	53.93	39.75
8. gram	37.48	35.04	37.20	24.91
9. small millets	50.35	41.07	40.92	18.49
10. groundnut	54.84	41.82	43.72	45.49
11. cotton	59.27	56.98	59.61	57.48
12. jute	78.61	78.02	74.83	75.28
13. minor cereals	47.92	38.91	36.17	31.77
14. arhar	75.23	76.51	75.92	66.55
15. urdh	56.37	62.45	56.35	63.93
16. moong	46.50	45.35	46.09	42.65
17. musur	51.91	46.41	47.84	39.35
18. other pulses	25.09	23.22	32.08	37.42
19. total pulses	60.45	59.74	62.16	51.84
20. sugarcane	56.24	60.01	53.03	51.89
21. rape & mustard	60.73	79.84	77.78	69.34
22. sesamm	47.86	58.59	47.45	59.28
23. linseed	37.34	46.72	46.94	57.81
24. castor	51.68	52.80	61.97	58.16
25. other oil seeds	62.60	53.09	58.15	59.63
26. total oil seeds	68.36	67.40	65.56	62.98
27. potato	48.88	47.81	50.86	54.69
28. spices	67.53	66.49	66.97	63.49
29. tobacco	90.47	90.14	90.18	74.95
i) sample villages	946	956	959	1848
ii) sample households	4287	4388	3144	5495

d/d : 5.3.67

SECTION 6

HOUSEHOLD SCHEDULE 2.1 : Agriculture and animal husbandry.

6.0 The household schedule 2.1, for collection of details about agriculture and animal husbandry, discontinued in the 8th, 9th and 10th rounds of N.S.S. operations is reintroduced in the 11th round. The structure of the schedule, though broadly the same as in the 7th round, has undergone some modifications, which are briefly explained in paragraphs 6.04 and 6.05 below.

6.01 Information in this schedule will be collected for the agricultural year July 1955 - June 1956. This year will consist of broadly the following seasons :

- (i) Early Kharif - autumn 1955.
- (ii) Late Kharif - winter 1955-56
- (iii) Rabi/Spring 1956
- (iv) Summer 1956.

6.02 The term "crop" will mean those items of agricultural produce which are properly known as crops as well as those items of agricultural produce which are not generally considered as crops but as other produce.

6.03 Information will be collected broadly on the following aspects of agriculture and animal husbandry:

- (a) Demography and agricultural pursuits of the members of the household (block 8).
- (b) Information on land possessed and cultivated, and rent paid (block 9).
- (c) Details of major and minor crops for each of the four crop seasons under the following heads :
 - (i) Area, production and disbursement (block 10-13)
 - (ii) Cost of seed, manure (chemical and other) and water charges (block 14).
 - (iii) Cost of human labour used in agricultural operations (block 15)
 - (iv) Cost of animal labour used in agricultural operations (block 16).
- (d) Details of other harvests under the following heads:
 - (i) Production and disbursement of other harvests (block 17).
 - (ii) Cost of production of other harvests (block 18).

- (e) Inventory and use of large and small heads of livestock (block 19).
- (f) Construction, improvement, repair and maintenance and hire charges of agricultural implements and equipments used in agricultural operations (block 20).
- (g) Details of animal husbandry under the following heads :
 - (i) Livestock produce, (block 21).
 - (ii) Cost of materials for livestock maintenance (block 22).
 - (iii) Service charges for livestock maintenance (block 23).
- (h) Other expenses (block 24).
- (i) Details of production and utilisation of cattle dung (blocks 25-26).
- (j) Summary of human labour days for different agricultural operations (block 27).

6.04 The major changes introduced in this round are as follows :

- (a) Introduction of new blocks for details of :
 - (i) Demography and agricultural pursuits (block 8).
 - (ii) Production and utilisation of cattle dung (blocks 25-26).
 - (iii) Summary of human labour days (block 27).
 - (iv) Remarks by investigator and inspector (blocks 28-29).
- (b) Collection of data regarding disbursement and stock of major and minor crops for each crop season under the following heads :

(i) Share or rent	(iv) Domestic consumption
(ii) Goods and services	(v) Crop sold
(iii) Crop loan	(vi) Wastage
- (c) Information regarding the acreage, production and disbursement of major and minor crops will be collected in the same block. Thus, the separate block for minor crops is eliminated in this round.

6.05 The minor alterations made are as given below :

- (a) Details of land possessed and cultivated, and rent paid will be collected for each plot of land possessed by the household.
- (b) Data on quantity of seed, manure used for production and quantity of livestock produce etc., will be obtained directly in standard units.
(Columns for local measures have been eliminated)
- (c) Details of cost of manure used for cultivation will be collected separately for chemical and other manure.
- (d) Cost of construction, improvements and repairs and maintenance of agricultural equipments and implements will be collected under the heads, cost of materials and hired labour charges, in respect of each item.

Details of Individual Blocks

6.1 Blocks 1 & 2 : These are to be filled in the usual manner. Sample household in Blocks 1 or 2 will correspond to the order of selection for selection for schedule 2.1 in schedule 0.1 or 0.2 as the case may be.

6.2 Block 3 : These are all classificatory items.

6.2.1 Line 1 : Household size will be the total number of usual members in the household. This definition of a household is exactly the same as adopted in the case of schedules 10 and 10.1.

6.2.2 Lines 2, 4, 5, 6 : These are to be filled in a manner exactly similar to that adopted in the case of other household schedules.

6.2.3 Line 3 : The code is to be entered here according to the code list given in the consolidated list of code numbers.

6.2.4 Lines 7-10 : These are to be left blank by the investigators.

6.3 Block 8 : This block is to record details of demography and agricultural pursuits in regard to each member of the household. The total number of members listed should be the same as the number entered against line 1 in Block 3.

6.3.1 Column 3 : The entry is to be in whole numbers, indicating age at last birthday.

6.3.2 Column 5 : The principal occupation of member during July 1955 - June 1956 is to be taken into consideration in giving the code number. The code should always be six-digit number.

6.3.3 Columns 6-12 : Entries are to be made in respect of agricultural work (calculated in man-days) put in by each member separately. The word 'own' pertains to the household and not the individual.

6.3.4 Columns 11-12 : While columns (6)-(10) relate to work done for the household, columns 11-12 relate to work done for others as hired labourers or in any other capacity. Column 11 is to record the amount of work in terms of man-days done for others on an exchange-basis.

6.4 Block 9 : Details for each plot possessed during July 1955 - June 1956 are to be entered in this block separately in different lines. All entries in columns 2 - 4 and columns 8 - 16 are to be in acres, correct to the second decimal place.

6.4.1 Column 1 : The serial number of the plot to be given in this column is in respect of each operational unit.

6.4.2 Columns 2-4 : Land possessed during the reference period is to be taken into consideration, and not land possessed on date of survey. This will include any land possessed during a part of the reference period even. Hence the total for these columns may not always tally with the entry against line 2

of block 3. In such cases the investigator is to give a note in Block 28.

6.4.3 Columns 5-7 : These columns are to record payments in respect of entries in columns 2 - 4 respectively.

6.4.4 Columns 8-11 : In these columns the areas under cultivation in the different crop-seasons as specified in para 6.01 above, are to be indicated with regard to each plot, listed in column 1.

6.4.5 Column 12 : In calculating the net total of the columns 8-11 any area entered more than once in these columns is to be taken once only. Thus, if 25 acres of a plot are cultivated both in Kharif and summer in column 12 will be recorded only "25.00 (and not $25.00 + 25.00 = 50.00$). Thus multiple counting is to be avoided.

6.4.6 Column 13 : This column will record the area of cultivable land left fallow during the survey-period.

6.5 Blocks 10-13 : In these four blocks information will be collected under similar headings in respect of the four different crop-seasons specified in para 6.01 above. Details of both major and minor crops are to be collected. A sub-block is meant for details of plots growing a particular crop, major or minor.

6.5.1 Separate sub-blocks are to be used in respect of each of the 35 crops listed below :-

- | | |
|-------------------|--------------------------------|
| 1. rice | 18. rape and mustard |
| 2. wheat | 19. sesamum |
| 3. barley | 20. castor |
| 4. maize | 21. linseed |
| 5. jowar | 22. other oil seeds |
| 6. bajra | 23. onion |
| 7. small millets | 24. potato |
| 8. ragi | 25. cabbage |
| 9. tapioca | 26. gourds |
| 10. other cereals | 27. other leafy vegetables |
| 11. gram | 28. other non-leafy vegetables |
| 12. arhar | 29. other root vegetables |
| 13. urd | 30. spices |
| 14. moong | 31. sugar cane |
| 15. musur | 32. jute |
| 16. other pulses | 33. cotton |
| 17. ground-nut | 34. minor fibres |
| | 35. tobacco. |

Each sub-block has 4 lines for the entry of details of 4 plots. Where, however, a crop is produced in more than 4 plots, the lines of the next sub-block may be used, the totals being given on the sub-total line in the last sub-block used. Even when details of plots growing a particular crop are spread out over more than one sub-block, care should be taken to

to ensure that no entries are made on the sub-total line between two such sub-blocks.

6.5.2 Column 1 : The name of the crop should be noted.

6.5.3 Columns 3-4 : Due to various reasons the area harvested may not be equal to the area sown. Hence both should be recorded in acres, correct to the second decimal place.

6.5.4 Column 6 : If the crop is a cereal, the quantity of straw produced is to be noted. Straw, like crop, is to be entered in maunds correct to the second decimal place, irrespective of the local measure in use.

6.5.5 Column 7 : By "farm-price" is meant the price which growers will charge for selling crops direct from farms; and as such, farm-price excludes transport and marketing charges.

6.5.6 Column 8 : The entry is given by the product of the entries in columns 5 and 7.

6.5.7 Column 9 : This column is to record the value of production of straw on the basis of the "farm-price" at harvest per maund of straw.

6.5.8 Columns 10-17 : Entries are to be made in the sub-total lines only.

6.5.9 Column 10 : This column is to record the amount of crop handed over as share or rent.

6.6.0 Column 11 : This column is to record the amount of crop handed over as payment for any kind of goods or services.

6.6.1 Column 12 : This column is to record the amount of crops :

(a) handed over as loan or

(b) handed over in full or part payment of loan, including interest, if any.

6.6.2 Column 15 : This column is to record the amount of crop wasted due to defective storage etc.

6.6.3 Column 16 : The stock as on July 1, 1956 is to be entered in this column.

6.6.4 Column 17 : The average sale-price per maund of the crop charged by the household in disposing the quantity entered in column 14 is to be entered in rupees correct to the second decimal place.

6.7 Block 14 : This block is meant for recording the seasonal cost data in respect of each of the crops. The 4 sub-blocks are to record the data separately for the 4 crop-seasons.

6.7.1 Column 2 : All the crops entered in column 1 in each of the blocks 10-13 are to be entered in this column, each crop against its proper season as given in column 1 of this block.

6.7.2 Column 4 : It is to be noted that in some areas cultivators purchase sapling and transplant them. In such cases it would be necessary to find out from local enquiries the amount of seed (in standard seers) necessary to raise the total quantity of saplings, before the entry in column 4 can be made. In such cases a note should be given in block 28.

6.7.3 Column 6 : The entry is given by the product of columns 5 and the sum of columns 3 and 4. Thus column 6 = $\left[\text{column 3} + \text{column 4} \right] \text{column 5}$.

6.7.4 Column 9 : The entry is given by the product of the entries on columns 7 and 8.

6.7.5 Column 13 : The entry is given as in the case of column 6 above.

$$\text{Column 13} = \left[\text{column 10} + \text{column 11} \right] \text{column 12}.$$

6.7.6 Column 14 : Labour charges, if any, will not be included in water charges.

6.8 Blocks 15 & 16 : Cost data for human and animal labour are to be collected in these two blocks which are exactly similar. As in the previous Block, the 4 sub-blocks are meant for recording the data separately for the 4 crop-seasons.

6.8.1 Column 2 : This column is to be filled up in the same manner as column 2 in Block 14.

6.8.2 Columns 3-20 : Human and animal labour days engaged in respect of each crop has to be ascertained under the heads (i) household labour, (ii) hired labour and (iii) exchange labour for the three specified categories of operations, separately. Payments to hired labour may be in cash or kind or both cash and kind. In entering hired labour charges imputed value of all payments in kind will also be considered. By exchange labour is meant labour of persons other than members of the household for which payments would be made in terms of labour itself. The entries in the following columns will be made as shown below :

$$\text{Column 7} = \text{column 4} \times \text{column 6}$$

$$\text{Column 8} = \left[\text{column 3} + \text{column 4} + \text{column 5} \right] \text{column 6}.$$

6.8.3 Columns 21 - 25 : Column 21 = column 3 + column 9 + column 15
Column 22 = column 4 + column 10 + column 16
Column 23 = column 5 + column 11 + column 17
Column 24 = column 7 + column 13 + column 19
Column 25 = column 8 + column 14 + column 20

6.9 Block 17 : This block is to record data of production and disbursement of various kinds of agricultural produce (listed and named in columns 1 and 2), not following any of the 4 crop-seasons specified in para 2.

6.9.2 Column 6 : The value is to be calculated on the basis of the average sale-price of the produce per unit at the time of harvest.

6.9.3 Columns 7-14 : These columns are to be filled up in the same manner as columns 10-17 in Blocks 10-13.

6.10 Block 18 : This block is to record the cost data for the produce listed and named in Block 17.

6.10.1 Columns 3 and 4 : These columns are to record the value of materials used for production, such as seeds, manure, seedlings, etc.

6.10.2 columns 13-16 : Column 13 = column 6 x column 11
Column 14 = column 9 x column 12
Column 15 = (column 5 + column 6 + column 7) x col.11
Column 16 = (column 8 + column 9 + column 10) x col.12

6.11 Block 20 : This block is to record the items of expenditure of both capital and non-capital nature incurred during the year under consideration against various items of implements and equipments required for agriculture and animal husbandry. In respect of item 17 entry in column 3 will indicate the area in acres in whole numbers. Against items 12 and 19, cross marks (x) will be put in column 3 by the investigators. Some of the implements or equipments may be used in enterprises other than agriculture and animal husbandry. For example, carts and boats may be used for transport purposes not connected with the enterprises in question. Such implements are not to be taken into consideration.

6.12 Block 21 : Details regarding livestock produce for the period of thirty days prior to the date of enquiry will be collected in this block. The distinction between the nature of entries in respect of primary and secondary products listed is of great importance. Quantity and value of primary products like milk, eggs will be the quantity and value of total production during the reference period irrespective of subsequent utilisation. In regard to secondary products like ghee, meat etc. entries will

be made only in the case of households where the "manufacturing" activity was undertaken for marketing purposes. If "manufacturing" was solely for home consumption there will be no entry in respect of secondary products. When part of the secondary production is for sale and part for domestic consumption the total quantity and value of production will be entered.

6.12.1 Columns 6 and 7 : The entry in column 6 will relate to man-days in column 3 and that in column 7 will relate to the total of columns 3, 4 and 5.

6.13 Block 24 : This block is to record other expenses incurred in agriculture and animal husbandry; expenses not covered in the previous blocks. Expenses on items like ropes and cordages, insecticides, transport, betterment levy, and marketing charges and interest on loans etc. will be recorded in this block. All entries will be in rupees correct to the second decimal place. Line 7 will give the total of lines 1 to 6. The total amount paid as interest on loans and litigation expenses will be recorded against lines 8 and 9 respectively.

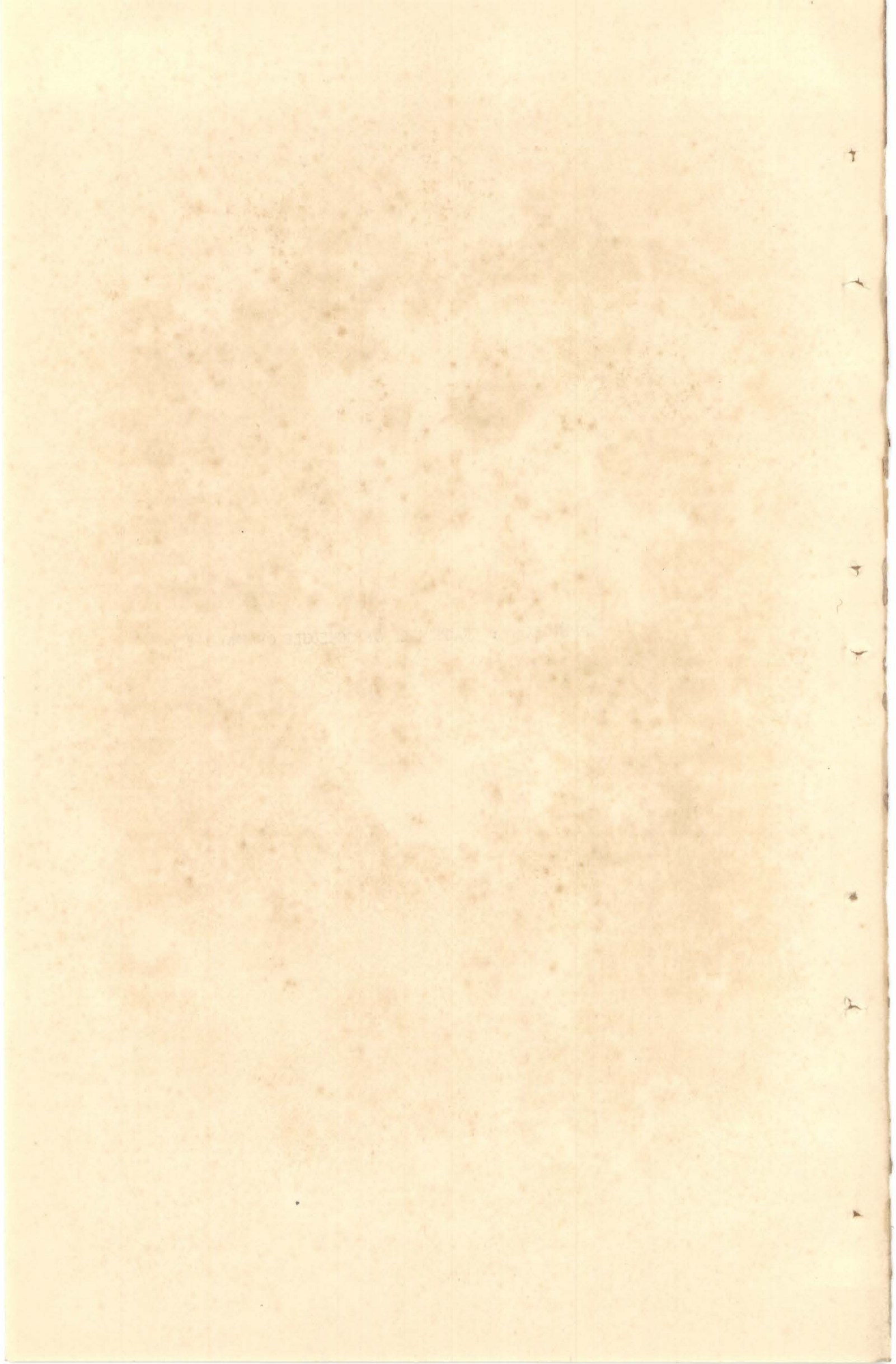
6.14 Block 27 : Entries for the summary of the human labour days will be posted from different blocks in this block by the investigator. All items are self-explanatory. In column 10 the percentage of the hired labour to the total is to be obtained for each item; which will be $\frac{\text{column 7}}{\text{column 9}} \times 100$ correct to 2 places after decimal.

Similarly column 11 = $\frac{\text{column 8}}{\text{column 9}} \times 100$.

6.15 Block 28 : This block is meant for the notes and remarks which the investigators can give on this schedule. The notes should be briefly written with proper reference to block, sub-block, column and line in each case.

6.16 Block 29 : This block is meant for the comments of the Inspector on the collection of data. Entries must be brief and with proper reference to block, sub-block, column and line.

APPENDIX V : FACSIMILE OF SCHEDULE OF ENQUIRY



[14] cost of seed, manure, etc.

season	crop	seed				manure							water charges (Rs. 0.00)
		quantity used (standard srs. 0.00)		price per std. seer (Rs. 0.00)	value (Rs. 0.00)	chemicals			others				
		home supply	purchased			qty. used (std. srs. 0.00)	price per std. seer (Rs. 0.00)	value (Rs. 0.00)	qty. used (std. mds. 0.00)		price per std. md. (Rs. 0.00)	value (Rs. 0.00)	
				home supply	purchased				home supply	purchased			
(1)	(2)	(3)	(4)	(5)	(6)	(7)	(8)	(9)	(10)	(11)	(12)	(13)	(14)
kharif (autumn 1955)													
		sub-total-(1)	x	x	x		x	x		x	x	x	
kharif (winter 1955-56)													
		sub-total-(2)	x	x	x		x	x		x	x	x	
rabi (spring 1956)													
		sub-total-(3)	x	x	x		x	x		x	x	x	
summer 1956													
		sub-total-(4)	x	x	x		x	x		x	x	x	
	total : (sub-totals 1-4)	x	x	x		x	x		x	x	x		

[15] human labour cost in agriculture

season	crop	soil preparation						sowing, transplanting and other growing operations						harvesting, transporting, threshing and sorting						total				
		labour days			charges per day (Rs. 0.00)	hired labour charges (Rs. 0.00)	total charges (Rs. 0.00)	labour days			charges per day (Rs. 0.00)	hired labour charges (Rs. 0.00)	total charges (Rs. 0.00)	labour days			charges per day (Rs. 0.00)	hired labour charges (Rs. 0.00)	total charges (Rs. 0.00)	labour days			hired labour charges (Rs. 0.00)	total charges (Rs. 0.00)
		household	hired	exchange				household	hired	exchange				household	hired	exchange				household	hired	exchange		
(1)	(2)	(3)	(4)	(5)	(6)	(7)	(8)	(9)	(10)	(11)	(12)	(13)	(14)	(15)	(16)	(17)	(18)	(19)	(20)	(21)	(22)	(23)	(24)	(25)
kharif (autumn 55)																								
	sub-total-(1)				×						×						×							
kharif (winter 55-56)																								
	sub-total-(2)				×						×						×							
rabi (spring 56)																								
	sub-total-(3)				×						×						×							
summer '56																								
	sub-total-(4)				×						×						×							
	total : (s.t. 1-4)				×						×					×								

[16] animal labour cost in agriculture

season	crop	soil preparation						sowing, transplanting and other growing operations						harvesting, transporting, threshing and sorting						total				
		labour days (00)			charges per day (Rs. 0.00)	hired labour charges (Rs. 0.00)	total charges (Rs. 0.00)	labour days (00)			charges per day (Rs. 0.00)	hired labour charges (Rs. 0.00)	total charges (Rs. 0.00)	labour days (00)			charges per day (Rs. 0.00)	hired labour charges (Rs. 0.00)	total charges (Rs. 0.00)	labour days (00)			hired labour charges (Rs. 0.00)	total charges (Rs. 0.00)
		household	hired	exchange				household	hired	exchange				household	hired	exchange				household	hired	exchange		
(1)	(2)	(3)	(4)	(5)	(6)	(7)	(8)	(9)	(10)	(11)	(12)	(13)	(14)	(15)	(16)	(17)	(18)	(19)	(20)	(21)	(22)	(23)	(24)	(25)
kharif (autumn '55)																								
	sub-total-(1)				×						×						×							
kharif (winter 55-56)																								
	sub-total-(2)				×						×						×							
rabi (spring '56)																								
	sub-total-(3)				×						×						×							
summer '56																								
	sub-total-(4)				×						×						×							
	total : (s.t. 1-4)				×						×						×							

[21] livestock produce—during the month ended on.....

[22] cost for materials for livestock maintenance : July 1955—June 1956

sr. no.	item	standard units	quantity produced std. units (0.00)	price per std. unit (Rs. 0.00)	value (Rs. 0.00)	sr. no.	item	standard units	quantity used std. units (0.00)		price per std. unit (Rs. 0.00)	total value (Rs. 0.00)
									home supply	pur-chased		
(1)	(2)	(3)	(4)	(5)	(6)	(1)	(2)	(3)	(4)	(5)	(6)	(7)
1.	cow milk	sr.				1.	green grass	md.				
2.	buffalo milk	sr.				2.	straw	md.				
3.	other milk	sr.				3.	fodder	md.				
4.	sub-total-(1)	×	×	×		4.	gram	md.				
5.	cow ghee	sr.				5.	bran	md.				
6.	buffalo ghee	sr.				6.	oil cakes	md.				
7.	other (milk ghee)	sr.				7.	seeds & oil seeds	md.				
8.	curd	sr.				8.	salt	sr.				
9.	butter	sr.				9.	concentrates	sr.				
10.	caseine	sr.				10.		×	×	×	×	
11.	other milk products	sr.				11.	medicines	×	×	×	×	
12.	sub-total (2)	×	×	×		12.	total	×	×	×	×	

[23] service charges for livestock maintenance : July 1955—June 1956.												
sr. no.	item	standard units	quantity produced std. units (0.00)	price per std. unit (Rs. 0.00)	value (Rs. 0.00)	sr. no.	item	man days (00)			hired labour charges (Rs. 0.00)	total charges (Rs. 0.00)
								hired	house-hold	exchange		
(1)	(2)	(3)	(4)	(5)	(6)	(1)	(2)	(3)	(4)	(5)	(6)	(7)
13.	dung (dry)	md.										
14.	wool	sr.										
15.	hides, skins, bones	md.										
16.	meat	sr.										
17.	hair, tuft, feather	×										
18.	eggs	no.										
19.	fish, spawns	sr.				1.	herding					
20.	honey	sr.				2.	attending labour					
21.	bee wax	sr.				3.	other service					
22.	cocoons (silk worm)	sr.				4.	medical					
23.	small animal (alive)	no.				5.	pedicure					
24.	poultry, birds (alive)	no.				6.						
25.	others	×	×	×		7.						
26.	sub-total (3)	×	×	×		8.	total				×	

[24] other expenses : July 1955—June 1956

[25] production of cattle dung during lastday

sr. no.	item	amount (Rs. 0.00)	sr. no.	item	no. of animal days (0.00)			dung (fresh) from h.h. premises last day (std. srs. 00)	remarks
					in h.h. pre-mises	outside	total		
(1)	(2)	(3)	(1)	(2)	(3)	(4)	(5)	(6)	(7)
1.	ropes and cordages								
2.	insecticides								
3.	transport service								
4.	marketing charges								
5.	betterment levy								
6.	others								
7.	total								
8.	interest on loan								
9.	litigation			total					

