



राष्ट्रीय प्रतिदर्श सर्वेक्षण
NATIONAL SAMPLE SURVEY

संख्या 215 NUMBER 215

छब्बीसवाँ दौर : जुलाई 1971—सितम्बर 1972

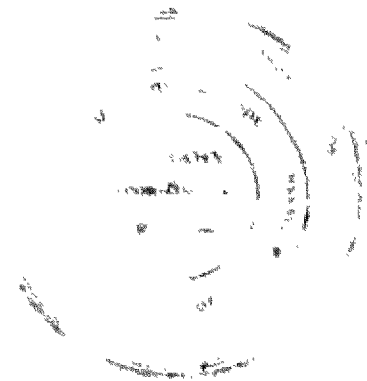
TWENTYSIXTH ROUND : JULY 1971 - SEPTEMBER 1972

जोत सम्बन्धी सारणियाँ
TABLES
ON
LAND HOLDINGS

राज्य : त्रिपुरा

STATE : TRIPURA

भारत सरकार
योजना मंत्रालय, सांख्यिकी विभाग
राष्ट्रीय प्रतिदर्श सर्वेक्षण संगठन
द्वारा निर्गमित



ISSUED BY
NATIONAL SAMPLE SURVEY ORGANISATION
DEPARTMENT OF STATISTICS, MINISTRY OF PLANNING
GOVERNMENT OF INDIA

Note of Caution

Being the scanned copy of old NSS report, this document may suffer from following limitations -

- i. Poor Quality of the Scanned images.
- ii. Page(s) missing in between.
- iii. Improper sequencing/arrangement.

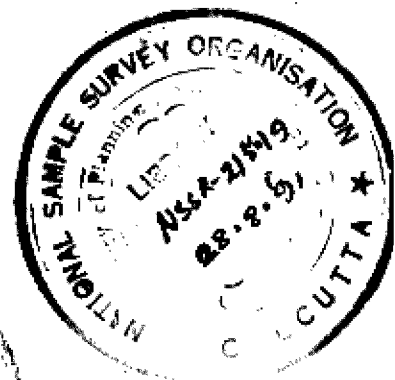
NATIONAL SAMPLE SURVEY

TWENTYSIXTH ROUND : JUL 1971 SEP 1972

NUMBER 215.19

TABLES ON LAND HOLDINGS AT STATE LEVEL

STATE : TRIPURA



NATIONAL SAMPLE SURVEY ORGANISATION
DEPARTMENT OF STATISTICS, MINISTRY OF PLANNING
GOVERNMENT OF INDIA

JULY 1975

C O N T E N T S

		Page(s)
Introduction	1 - 8
Note on estimates of aggregates	(1) - (vii)
List of tables	9 - 13
Size class of holding (with codes)	14
Tables		
i) urban & rural	15 - 38
ii) urban	39 - 63
iii) rural	65 - 90

* * * * * AT THE END * * * * *

NATIONAL SAMPLE SURVEY
TWENTYSIXTH ROUND : JUL 1971 - SEP 1972
SURVEY ON LAND HOLDINGS

Introduction

1. With the decision of the Government of India to participate in the world agricultural census, 1970, sponsored by the Food and Agriculture Organisation of the United Nations, the Ministry of Agriculture desired that the NSS Organisation may organise, as in the past, a sample survey of land holdings with the object of obtaining comparable information on the structure of agriculture in the country. The survey was undertaken in 1971-72 as a part of the 26th round of the NSS in conjunction with the debt and investment survey proposed by the Reserve Bank of India. It may be mentioned that the enquiry into land holdings in the 26th round was the third extensive survey on land holdings carried out by the NSS Organisation, the first having been undertaken from Jul 1954 to Jun 1955 as a part of the 8th round and the second from Jul 1960 to Jul 1962 as part of 16th and 17th rounds of the NSS.

Period of the survey

2. In order to meet the requirements both of the Ministry of Agriculture and the Reserve Bank of India, the survey period of the 26th round was extended to 15 months from Jul 1971 to Sep 1972. The period of the survey was divided into three phases and during each phase the same set of sample households was canvassed.

Geographical coverage

3. The survey extended to the whole of India excluding Andaman Nicobar Islands, Arunachal Pradesh, Dadra and Nagar Haveli, Laocadive, Minicoy and Amindivi Islands, Ladakh district of Jammu and Kashmir and a few districts of Madhya Pradesh, Maharashtra and Tripura.

Participation of States

4. All the States except those of West Bengal, Nagaland and Himachal Pradesh participated in the 26th round on a matching basis in so far as the enquiry into land holdings was concerned. The Union Territory of Delhi participated with a double matching sample. The Union Territory of Chandigarh, Goa, Daman and Diu and Pondicherry did not

Schedules prescribed

5. As the survey on land holdings and the debt and investment survey had many items of information in common, the two surveys were integrated and a common set of schedules was designed for the joint enquiry. Separate schedules were prescribed for rural and urban areas and for each of the three visits to the Sample households. In all six schedules were canvassed as per details given below :

Sl. No. of visit	Period of visit	Schedules canvassed	Broad contents of schedules
(1)	(2)	(3)	(4)
1.	Jul 71 to Dec 71	Schedules 18.1 (R) 18.1 (U)	Land holdings and inventory of assets and liabilities
2.	Jan 72 to Jun 72	Schedules 18.2 (R) 18.2 (U)	Production and sale of crops, receipts from non-farm business and transactions of assets and liabilities during Jul 71 to Dec. 71
3.	Jul 72 to Sep 72	Schedules 18.3 (R) 18.3 (U)	Production and sale of crops, receipts from non-farm business and liabilities during Jan 72 to Jun 72

6. As will be seen from the above, data on land holdings were collected through schedules 18.1(R) and 18.1(U) during the first visit from Jul 1971 to Dec 1971. Schedules 18.2 (R & U) and 18.3 (R & U) were meant for obtaining information relating to debt and investment situation for specified periods during the two successive visits.

Sampling Design

7. The sampling design, for the rural and urban sectors each, was self-weighting at State level. In the case of rural sector, it was self-weighting at regional and sub-stratum levels also. The sampling design for the rural area was mainly a stratified two-stage one. The first stage units were villages which were selected circular systematically with equal probability in the form of two independent interpenetrating sub-samples. The sampling design for the urban area too was a stratified two-stage one with urban blocks as the first stage units. The sample blocks were also selected systematically with probability proportional to size in the form of two independent and interpenetrating samples. The second stage units in the case of rural and urban sectors each, were households.

8. For the purpose of stratification in the rural areas, the country was first divided into 66 agricultural regions by grouping, within each State or Union Territory, districts having similar population density and crop pattern. Strata were formed in each region by grouping tehsils, which were (1) contiguous (2) having similar crop pattern and population density and (3) having good transport facilities amongst them. In all, there were 350 strata; and within each stratum two independent sub-samples of 12 villages each were selected. In each sub-samples, the villages with odd orders of selection formed the central sample and the rest State sample. The 1961 census list of villages was used as sampling frame for selection of villages.

9. The central sample consisted of 4200 villages in all. The allocation of these villages of each State and Union Territory was based on joint consideration of its rural population, area under cereal crops and available investigator strength. This was modified to ensure a minimum of 180 villages in each State with the exception of some small States and Union Territories.

10. In the case of urban sector, the 4 cities of Bombay, Calcutta, Delhi and Madras formed strata by themselves. Further, within each State and Union Territory towns with population of less than 50,000 formed stratum one and the remaining towns and cities stratum two. A total of 4640 blocks in the Central sample was allocated to the States in proportion to their 1961 census urban population with a minimum of 144 blocks in each State excepting some small States and Union Territories. The selection of blocks in each stratum was done in the form of two independent sub-samples of equal size.

11. For selection of sample households, all the households in a sample village were first divided into four sub-strata on the basis of land operated. Households with no land formed sub-stratum one. The cut of points among the remaining three sub-strata were made roughly by equalising area operated among them. These points varied generally from one region to another even within a State. Further, in

sub-stratum one consisting of households with no land, for drawing the sample, the households were arranged by their means of livelihood into three classes, namely (i) agricultural labourer, (ii) artisan and (iii) others. On an average, three households were selected from each sub-stratum in each sample village giving thereby more weight to the households operating larger areas of land. Within each sub-stratum, sample households were selected linear systematically.

12. In the urban sector, the households in each sample block were divided into four classes on the basis of land owned and employment status as shown below:

- i) Class I : households owning land less than one acre and self-employed.
- ii) Class II : households owning one acre and more of land and self-employed.
- iii) Class III : households owning land one acre and more but non-self employed.
- iv) Class IV : households owning less than one acre of land and non-self employed plus households with no land.

Households were then arranged in increasing order of household class codes and linear systematic sample was selected for canvassing schedule 18.1(U). On an average, four households were selected from each sample block.

Item coverage

13. The main items of information collected through schedules 18.1(R) and 18.1(U) were ;

- i) demographic and activity particulars of the members of the households;
- ii) land owned, land leased out and land leased in under different terms of tenancy;
- iii) inventory of livestock and their value;
- iv) inventory of agricultural machinery and other equipments used in non-farm business, and their value;
- v) inventory from transport equipments and their value;
- vi) value of other assets and liabilities;
- vii) details about operational holdings, and
- viii) use of chemical fertilisers, manures and pesticides on land operated.

Concepts and definitions

14. The concepts and definitions adopted in the survey of land holdings are given below :-

- i) Household: A group of persons normally living together and taking food from a common kitchen constitutes a household.
- ii) Ownership of land: The ownership right over a plot of land is defined as the right of permanent heritable possession with or without the right to transfer the title. Land held in ownership like possession under a long term lease or assignment is also considered as land owned by the household. The total of land owned by all the members of the household is taken as land owned by the household.
- iii) Land leased in: Land taken on lease from others without any permanent right of possession for the lessee is considered as land leased in. The aggregate of land leased in by all the members of the household gives the total of the land leased in by the household as a whole.
- iv) Land leased out: Land given out on lease to others by owners of the land is defined as land leased out. The aggregate of the land leased out by all the members of the household constitutes the total of land leased out by the household as a whole.
- v) Land possessed: Land owned by the household together with land leased in by it minus land leased but by it constitutes the land possessed by the household.
- vi) Agricultural labour: A person is considered to be an agricultural labourer if he follows one or more of the following agricultural occupations in the capacity of labourer on hire or on exchange: (a) farming, (b) dairy farming, (c) production of any horticulture commodity, (d) raising of livestock, bees or poultry, and (e) any work performed on a farm in connection with the farm operations.
- vii) Parcel: A parcel is all land surrounded by land of other holdings or by land not forming part of any holding. It might consist of one or more cadastral units, plots of fields.
- viii) Land holding: Household operational holding is a land holding possessed by a single household.

Operational holding is a land holding operated under a single management. In a majority of cases, a household operational holding will also be an operational holding operated under a single management of the household. But this may not always be the case. For instance, a household operational holding may consist of two operational holdings separately managed by two brothers or by a father and a son who are members of a single household. In such cases, there may have been a separation

of land holding but not in the household. On the other hand, a household may have a share in an operational holding jointly managed by two or more households such as the separate households of two brothers or a father and his son who may have separate households but a joint operational holding. In such cases, the household operational holding will consist of only the share of the household in the joint operational holding plus any land holding which the household may have under its own single management.

The definition as prescribed in the instructions to field staff is reproduced below-

A holding is all land which is used wholly or partly for agricultural production and is operated (directed/managed) by one person alone, or with the assistance of others, without regard to title, size or location. The holding may consist of one or more parcels of land provided they are located within India and these as a whole form part of the same technical unit. By technical unit will be understood, in the context of agricultural operations, a unit with more or less independent technical resources, etc. covering items like land, implements, livestock, etc. Thus, an operational holding will be considered (among other things) as one (a) operated by a 'person' and (b) constituting one technical unit. A 'person' in the definition, for the purpose of this survey, will be either a single household or more than one household operating jointly. Since the investigator has to get hold of the operational holdings through the sample households, it is important to identify the 'person' who operates and the 'technical unit' under such 'person'. The distinctiveness of the technical unit and existence of distinct management will be probed into for arriving at the number of operational holdings. Thus, more than one 'person' (signifying distinct management/direction/operation) who operate will not be considered to have the same technical unit, even if most of the technical resources used by them are the same. On the other hand under the same 'person' there could be more than one operational holding provided there are distinct technical units.

The following holdings will be excluded from the scope of the survey:

- (a) land put to non-agricultural uses only such as house sites etc., and
- (b) co-operative farms.

- ix) Individual and joint operational holding : An operational holding managed by one household is considered to be an individual holding, and that managed by members belonging to different households is taken to be as joint operational holding.
- x) Attached farm worker : Attached farm workers are those workers who are more or less in continuous employment of the management of the operational holding and are not under some sort of contract during the period of employment.

Reference period

15. Details of ownership holding, land leased out and land leased in, inventory of livestock, agricultural transport and other equipment and other assets and liabilities of the households were collected as on 30 June 1971. For particulars of operational holdings of the households, the reference period was the agricultural year 1970-71.

Results presented

16. In order to expedite the release of the principal results of every survey, the Governing Council for the National Sample Survey Organisation decided that such results may be obtained through manual tabulation. Accordingly, for the purpose of survey on land holdings, a programme for manual tabulation of data on the first seven items listed in paragraph 13 was drawn up both for the Central and State samples.

17. In all, 21 tables were prescribed. These covered items like size of holdings, household ownership of holdings (also landless households), household operational holdings, particulars of area leased in and area leased out, inventory of livestock, farm machinery, other equipments used in non-farm business, transport equipment, number of attached farm workers in the operational holdings during the major agricultural seasons of the holdings.

18. The tables presented here are based on the Central Sample and are for all the sub-samples combined. A set of 21 tables is prescribed for each of the following : -

- i) urban and rural sectors combined,
- ii) urban sector only,
- iii) rural sector only,

The results are provisional in nature and are subject to revision.

19. The brochure for each State has been brought out in two volumes. Volume-I gives brief account of the sample design of the survey, concepts and definitions together with the code list and the 21 prescribed tables given/ tabulated at State level. In volume-II are given similar tables but with estimates at regional level. In respect of Tripura the brochure contains one volume as the tables are prepared at State level only.

20 The results presented here are in respect of Tripura. The State consists of one region. The names of the districts within the region are as below:-

Sl. No.	Name of the region	Composition of the region (districts)
(1)	(2)	(3)
1	Tripura	North Tripura, South Tripura and West Tripura.

Note on Estimate of Aggregates

The principal results of the 26th Round Survey on Land Holdings for the State are presented in this brochure in the form of ratio estimates (percentages, averages, etc.). The main focus of these tables is not on the aggregate estimates. Nevertheless, this section presents, in the enclosed tables, estimates of three variables, viz. number of households, area owned and area operated by household sector at the all-India level as well as the State level, and compares them with estimates available from other official sources.

2. Table I gives for each State/Union Territory the estimates of number of households, area owned and area operated as per NSS survey in columns 2, 5 and 6 respectively. Column 3 gives the number of households based on the 1971 Census and column 4 the percentage of the NSS figure over that of the Census. Similarly, the estimate of area operated as obtained from the NSS has been compared in column 8 with the figure of 'net area sown' for 1970-71, supplied by State Agricultural Statistics Authorities (SASA). The all-India estimates given in the last row relate only to the 23 States/Union Territories listed in column 1; Nagaland and Chandigarh are excluded because the survey covered only the urban sector.

3. Column 4 of Table I clearly shows that at the all-India level the difference between the NSS estimates of the number of households and that of the 1971 Census is negligible (only 0.42%), the respective figures being 100.61 and 100.19 million. At the State level, however, the NSS estimates are higher than the 1971 Census figure in 10 out of the 23 States/Union Territories listed in the table and lower in the case of 13. The States showing plus differences are Maharashtra, Uttar Pradesh, Orissa, Karnataka, Delhi, Punjab, Tamil Nadu, Gujarat, Meghalaya and Andhra Pradesh. The maximum percentage difference on the plus side was 11.63 in respect of Maharashtra, minimum of 1.59 in respect of Andhra Pradesh and in five of them (viz. Gujarat, Meghalaya, Punjab, Tamil Nadu and Delhi) the percentage difference ranged between 2 to 5. Out of the 13 States/Union Territories where the NSS estimates were lower than the comparable figures from the Census, (excluding the Union Territories of Goa and Pondicherry, where the sample size was small), the maximum difference of 28.28% was observed in respect of Himachal Pradesh and the minimum difference of 3.78% in respect of Haryana. For Himachal Pradesh, the sample size (36 villages and 24 blocks) for the 26th Round may not, perhaps, have been adequate.

4. In understanding these differences, it is pertinent to note that the reference periods to which these two sets of figures relate are not exactly identical. The 1971 Census relates to 1st-April-1971 while the NSS estimates relate to the

moving reference period of a day during July 1971 to December 1971. Considering the fact that the reference period of the NSS was later than that of the Census, the NSS estimates of number of households are expected to be slightly higher than the Census figure and this indeed found to be true at the all-India level. But larger plus differences and the minus differences must be mainly due to the sampling errors to which the NSS estimates are subject.

5. Column 7 of table I gives the figures on 'net area sown' for 1970-71 as per ninefold land-use classification. Column 8 shows that at the all-India level, the NSS estimates of area operated are lower than the 'net area sown' by about 7.2%. At the State level also, the NSS estimates are lower except in the case of Meghalaya, Himachal Pradesh and Maharashtra where the NSS estimates are higher. In Uttar Pradesh and Karnataka they are more or less the same. Of the remaining States/Union Territories differences of the order of 10 percent or more, are noticed in the case of Assam, Haryana, Kerala, Meghalaya, Orissa, Punjab, Tamil Nadu, Tripura, West Bengal, Delhi, Goa and Pondicherry. The conspicuous cases are Kerala (-43%); Haryana (-33%); Punjab (-31%); Meghalaya (+26%); Orissa (-24%); West Bengal (-22%) and Tamil Nadu (-20%), if we leave out the small States/Union Territories. On the other hand, the NSS estimates in respect of Bihar and Madhya Pradesh, tally well with the figures of 'net area sown', the difference being only about 3 percent.

6. While analysing the variations between the figures of 'area operated' of the NSS and 'net area sown' supplied by the States, one should bear in mind the following differences in the concepts and definitions adopted as well as in the agencies (and the procedures utilized) in arriving at the two sets of figures :

- (i) 'area sown' by the non-household sector like cooperative farms, government agricultural farms, land under temples, etc., is included in the figures of 'net area sown' but this is not covered in the NSS Round on operational holdings. This gives a small down-ward pull to the NSS estimates.
- (ii) Area under each of the land use classification (viz., forest, land put to non-agricultural uses, barren and unculturable land, permanent pastures and other grazing land, land under miscellaneous tree crops, culturable waste, fallow land other than current fallow and current fallow) is included in the NSS estimates of area operated whenever such area formed part of an operational holding which is used partly for agricultural production, whereas these are wholly excluded from the 'net area sown' figures. This gives considerable upward pull to the NSS estimates.

(ii)

- (iii) There is also difference in the agency adopted. In the case of all States excepting Kerala, Orissa and West Bengal, Statistics on land classification are collected by the revenue agency through the land records. On the other hand, the NSS data on land holdings were collected through oral enquiries from the selected households by deploying trained investigators under adequate field supervision but without any reference to the land records.
- (iv) In the case of Kerala, Orissa and West Bengal, Statistics of 'net area sown' are obtained not by complete enumeration through land records but estimated on the basis of sample surveys conducted by the State governments. To that extent both the estimates of 'net area sown' and the NSS 'area operated' are subject to sampling errors.

7. Thus among the cases of conspicuous differences the three States, Kerala, Orissa and West Bengal are states where the 'net area sown' figure is also a sample estimate. The differences found in the case of Punjab, Haryana and Tamil Nadu are a matter of concern. Looking at column 4 of Table I, in these States one does not notice underestimation of households in the NSS round (except Haryana where it is marginal) as against the Census. The differences between estimates of households and estimates of area are not in all cases in the same direction. Therefore, if 'area operated' is estimated on the basis of 'operated area per household on the basis of NSS Round' multiplied by the 1971 Census number of households (as given in column 10 of Table I) one does not achieve any substantial reduction in variation between the NSS figure so derived and 'net area sown' estimates. With a view to presenting an overall picture in this regard showing the reduction or increase achieved in the percentage deviation from 'net area sown' by the adoption of the estimate of operated area based on Census number of households as compared to the NSS estimate of operated area, a separate Table II has been prepared and attached to the Note. Table II gives full details of States falling under the following four categories:-

- (i) States having overestimation of number of households and increase in percentage deviation from 'net area sown'.
- (ii) States having overestimation of number of households and decrease in percentage deviation from 'net area sown'.
- (iii) States having underestimation of number of households and increase in percentage deviation from 'net area sown'.
- (iv) States having underestimation of number of households and decrease in percentage deviation from 'net area sown'.

It would be seen from columns 1 to 5 of Table II that the divergence from the 'net area sown' figures increases in the case of 8 States/Union Territories where the NSS estimates of number of households is on the higher side. Of these Karnataka, Orissa, Uttar Pradesh, Gujarat and Delhi have shown more divergence than the other States. Of the States where the NSS estimates of number of households were less than the Census number of households, Himachal Pradesh shown maximum increase in divergence. At all-india level, the divergence has not reduced substantially as can be seen from columns 8 and 11 of Table I.

8. It is, however, true that in the case of about 11 States/Union Territories variation between the two estimates is reduced if we consider the estimates as given in column 10, Table I. Leaving aside small States/Union Territories, significant improvement is shown only in Maharashtra, Rajasthan, Jammu & Kashmir, Assam, West Bengal, Haryana and Kerala. Except for Maharashtra, these are also the States where the number of households in the NSS was under estimated (Table II).

9. Thus, so far as the estimates of aggregate operated area in 1970-71 in different States are concerned, the reader will have to choose between the following three: (a) NSS estimates as given in column 6 of Table I; (b) NSS estimates based on 1971 Census number of households, as given in column 10 of Table I; and (c) 'net area sown' given by State Agricultural Statistics Authorities and shown in column 7 of Table I. The National Sample Survey Organisation is trying to investigate into possible reasons for the large differences between these estimates in some States. In the meanwhile, the choice between the estimates must be left to the discretion of the reader.

10. In spite of such differences in the estimates of the aggregate operated area, it is hoped that the reader will find the NSS results presented in these volumes in the form of averages and percentages useful. Many of the results presented here are not available from any other source. Some of the results, such as the distribution of the Operational holdings by their size, will also become available from the Agricultural Census 1970-71. The results of the Agricultural Census are derived by a retabulation of the basic data from the land records. Before comparing them with the data from the NSS, the reader should first check them with the aggregate estimates of the 'net area sown'. Apart from the fact that the NSS estimates of aggregate operated area do not agree well with the estimates of 'net area sown' in some States, there is an important difference in the way the NSS results and the results of the Agricultural Census are built up. As mentioned above, the results of the Agricultural Census are derived by a retabulation of the basic data from the land records and cover both household and non-household sectors. The results of the NSS are derived by direct enquiries from a sample of households and hence cover only the household sector. The choice between the two sets of data must again be left to the reader.

TABLE I : STATEWISE ESTIMATES OF NUMBER OF HOUSEHOLDS, AREA OWNED AND AREA OPERATED BASED ON 26TH ROUND OF NSS AND SIMILAR RESULTS FROM OTHER OFFICIAL SOURCES

Sl. No.	State/ Union Territory	No. of households (00)		Percent- age of N.S.S. estimate over census figures	Area (00 hectares)		Net area sown 1970-71 (from SASA)
		Estimate as per N.S.S.	As per 1971 census		N.S.S. estimate of owned area-	Operated area	
0	1	2	3	4	5	6	7
1	Andhra Pradesh	90128	88714	101.59	110758	106798	117348
2	Assam	22977	25046	91.74	18992	20071	22352
3	Bihar	92077	98379	93.59	76264	82373	84548
4	Gujarat	48111	46845	102.70	87333	88104	97359
5	Haryana	15364	15968	96.22	20734	23907	35650
6	Himachal Pradesh	4692	6542	71.72	5530	5852	5463
7	Jammu & Kashmir	6954	7635	91.08	6274	6491	6876
8	Karnataka	55351	52437	105.56	96302	102412	102482
9	Kerala	32937	35431	92.96	11754	12366	21717
10	Madhya Pradesh	72935	77403	94.23	174506	180752	184533
11	Maharashtra	105301	94328	111.63	188018	189265	176680
12	Manipur	1426	1826	78.09	1107	1298	1400 [§]
13	Meghalaya	2111	2063	102.33	1884	1808	1430 [®]
14	Orissa	45121	41875	107.75	41455	42672	56015
15	Punjab	24407	23702	102.97	25332	28056	40528
16	Rajasthan	39012	45039	86.62	138138	139243	151790
17	Tamil Nadu	88442	85930	102.92	49259	49214	61692
18	Tripura	2027	2728	74.30	1587	1455	2400
19	Uttar Pradesh	171771	158969	108.05	163070	174406	173049
20	West Bengal	75120	80537	93.27	40480	43410	55420 [£]
21	Delhi	8352	7977	104.70	877	532	805
22	Goa	959	1658	57.84	143	266	1336 [*]
23	Pondicherry	540	909	60.29	131	193	315
ALL INDIA		1006123	1001941	100.42	1259928	1300944	1401188

® Figures are provisional. £ Figure relates to the year 1967-68.

§ Figure is primarily based on State Crop Survey (Rice).

* Figure relates to the year 1960.

TABLE I (CONTD.) : STATEWISE ESTIMATES OF NUMBER OF HOUSEHOLDS, AREA OWNED AND AREA OPERATED BASED ON 26TH ROUND OF NSS AND SIMILAR RESULTS FROM OTHER OFFICIAL SOURCES.

Sl. No.	State Union Territory	Percentage of N.S.S. estimate of operated area over 'net area sown'	Average operated area (0.00 hect.) per household	NSS estimate of operated area (00 hect.) based on census households	Percentage of col.10 col.7
(0)	(1)	(8)	(9)	(10)	(11)
1	Andhra Pradesh	91.01	1.18	104682	89.21
2	Assam	89.80	0.87	21790	97.49
3	Bihar	97.43	0.89	87557	103.56
4	Gujarat	90.49	1.83	85726	88.05
5	Haryana	67.06	1.56	24910	69.87
6	Himachal Pradesh	107.12	1.25	8178	149.68
7	Jammu & Kashmir	94.40	0.93	7100	103.26
8	Karnataka	99.93	1.85	97008	94.66
9	Kerala	56.94	0.38	13464	61.95
10	Madhya Pradesh	97.95	2.48	191959	104.02
11	Maharashtra	107.12	1.80	169790	96.10
12	Manipur	92.71	0.91	1662	118.64
13	Meghalaya	126.43	0.86	1774	124.06
14	Orissa	76.18	0.94	39362	70.27
15	Punjab	69.23	1.15	27257	67.25
16	Rajasthan	91.73	3.57	160739	105.93
17	Tamil Nadu	79.97	0.58	48121	78.00
18	Tripura	60.62	0.72	1964	81.83
19	Uttar Pradesh	100.78	1.02	162148	93.70
20	West Bengal	78.33	0.58	46711	84.28
21	Delhi	66.09	0.06	479	59.38
22	Goa	19.91	0.28	464	34.73
23	Pondicherry	61.27	0.35	318	100.95
ALL INDIA		92.85	1.29	1292504	92.24

TABLE II : STATES SHOWING INCREASE/DECREASE IN THE DIFFERENCE (IN PERCENTAGE TERMS) OF N.S.S. OPERATED AREA (WITH NET AREA SOWN) OVER THAT OF N.S.S. ESTIMATE OF AREA OPERATED BASED ON CENSUS HOUSEHOLDS

(a) : STATES SHOWING OVERESTIMATION OF NUMBER OF HOUSEHOLDS AND INCREASE IN PERCENTAGE DEVIATION FROM NET AREA SOWN

State	Extent of N.S.S. overestimation of households (%)	Percentage deviation from net area sown of		Absolute increase in the percentage deviation in col.4 from col.3
		N.S.S. operated area	Operated area based on census households	
1	2	3	4	5
Uttar Pradesh	8.05	+ 0.78	- 6.30	5.52
Andhra Pradesh	1.59	- 3.99	-10.79	1.80
Gujarat	2.70	- 9.51	-11.95	2.44
Karnataka	5.56	- 0.07	- 5.34	5.27
Orissa	7.75	-23.02	-29.73	5.91
Punjab	2.97	-30.77	-32.75	1.98
Tamil Nadu	2.92	-20.03	-22.00	1.97
Delhi	4.70	-33.91	-40.62	6.71

(b) : STATES SHOWING OVERESTIMATION OF NUMBER OF HOUSEHOLDS AND DECREASE IN PERCENTAGE DEVIATION FROM NET AREA SOWN

State	Extent of N.S.S. overestimation of households (%)	Percentage deviation from net area sown of		Absolute decrease in the percentage deviation in col.9 from col.8
		N.S.S. operated area	Operated area based on census households	
6	7	8	9	10
Meghalaya	2.33	+26.43	+24.06	2.37
Maharashtra	11.63	+ 7.12	- 3.90	3.22

Note : Figures in columns 5 & 10 represent the absolute increase/decrease worked out as the difference between the figures in the preceding two columns without considering their signs.

TABLE II (CONTD.) - STATES SHOWING INCREASE/DECREASE IN THE DIFFERENCE (IN PERCENTAGE TERMS) OF N.S.S. OPERATED AREA (WITH NET AREA SOWN) OVER THAT OF N.S.S. ESTIMATE OF AREA OPERATED BASED ON CENSUS HOUSEHOLDS

(c) STATES SHOWING UNDERESTIMATION OF NUMBER OF HOUSEHOLDS AND INCREASE IN PERCENTAGE DEVIATION FROM NET AREA SOWN

State	Extent of N.S.S. underestimation of households (A)	Percentage deviation from net area sown of		Absolute increase in the percentage deviation in col. 14 from col. 13
		N.S.S. estimate	Operated area based on census households	
11	12	13	14	15
Himachal Pradesh	28.28	+7.12	+49.68	42.56
Bihar	6.41	2.5		0.93
Madhya Pradesh	5.77	-2.05	+1.02	1.97
Manipur	21.91		3.64	11.35

(d) STATES SHOWING UNDERESTIMATION OF NUMBER OF HOUSEHOLDS AND DECREASE IN PERCENTAGE DEVIATION FROM NET AREA SOWN

State	Extent of N.S.S. underestimation of households (B)	Percent deviation from net area sown of		Absolute decrease in the percentage deviation in col. 19 from col. 18
		N.S.S. estimate	Operated area based on census households	
16	17	18	19	20
Assam	20	-10.20	-2.51	7.69
Haryana	3.78		-30.13	2.81
Jammu & Kashmir	8.92	5.60	26	2.34
Kerala	7.04	-13.00	-38.05	5.01
Rajasthan	13.30	27	+5.93	2.34
Tripura	25.70	-39.78	-18.1	21.21
West Bengal	6.73		72	2.95
Goa	42.16	-60.09	-65.27	14.82
Pondicherry	39.71	-58.77	-0.95	37.78

Note: Figures in column 14 represent the absolute increase/decrease worked out as the difference between the figures in the preceding two columns without consideration of their signs.

LIST OF TABLES

Description of table	State tables		
	Urban & Rural	Urban	Rural
	Page Number		
TABLE (1) : Estimated number of households, area owned and household size by size class of household ownership holding.	15	39	65
TABLE (2) : Percentage and cumulative percentage distributions of households and of area owned by size class of household ownership holding.	16	40	66
TABLE (3) : Percentage of households leasing out land under different terms to all households owning land and percentage of area leased out to area owned by size class of household ownership holding.	17	41	67
TABLE (4) : Percentage of households leasing in land under different terms to all households owning land and percentage of area leased in to area owned by size class of household ownership holding.	18	42	68

LIST OF TABLES (CONTD.)

	Description of table	State tables		
		Urban & Rural	Urban	Rural
TABLE (5)	: Estimated number of households, area operated and households size by size class of household operational holding.	19	43	69
TABLE (6)	: Percentage and cumulative percentage distribution of households and of area operated by size class of household operational holding.	20	44	70
TABLE (7)	: Estimated number of owned cattle and owned buffaloes per 100 households by size class of household operational holding.	21	45	71
TABLE (8)	: Estimated number of owned cattle and owned buffaloes per 100 hectares or operated area by size class of household operational holding.	23	47	73
TABLE (9)	: Percentage of households not having working cattle and buffaloes by size class of household operational holding.	25	49	75

LIST OF TABLES CONTD.

Description of table	State tables		
	Urban & Rural	Urban	Rural
		Page Number	
TABLE (10) : Estimated number of livestock (other than cattle and buffaloes) and poultry owned per 100 households by size class of household operational holding.	26	50	76
TABLE (11) : Estimated number of agricultural machinery owned per 100 households by size class of household operational holding.	27	51	77
TABLE (12) : Estimated number of agricultural machinery per 100 hectares of cropped area and area operated per tractor by size class of household operational holding.	29	53	79
TABLE (13) : Percentage of households reporting pumps and ploughs by size class of household operational holding.	30	54	80
TABLE (14) : Estimated number of non-farm business equipments owned per 100 households by size class of household operational holding.	x	55	81
x : This table is cropped as the data collected for urban and rural sector are different and not amenable for pooling. 11			

LIST OF TABLES (CONTD.)

	Description of table	State tables		
		Urban & Rural	Urban	Rural
		Page number		
TABLE (15) :	Estimated number of transport equipments owned per 100 households by size class of household operational holding.	31	56	83
TABLE (16) :	Percentage of shares of value of owned (i) cattle (ii) buffaloes (iii) other livestock (iv) agricultural machinery (v) non-farm business equipments (vi) transport equipments in the total value of all the six asset groups by size class of household operational holding.	32	57	84
TABLE (17) :	Estimated number of operational holdings and area operated by size class of operational holding.	33	58	85
TABLE (18) :	Percentage and cumulative percentage distribution of operational holdings and area operated by size class of operational holding.	34	59	86

LIST OF TABLES (CONTD.)

	Description of table	State tables		
		Urban & Rural	Urban	Rural
		Page Number		
TABLE (19)	: Percentage of holdings reporting owned areas and those reporting leased in areas and percentage of operated area owned and leased in under different terms of leasing in by size class of operational holding.	35	60	87
TABLE (20)	: Percentage of individual and joint operational holdings and their percentage shares of area operated by size class of operational holding.	37	62	89
TABLE (21)	: Average number of attached farm workers per operational holding (reporting) for different major agricultural seasons by size class of operational holding.	38	63	90

SIZE CLASS OF HOLDING

<u>ACRES</u>		<u>HECTARES</u>		<u>CODE</u>
		@ Landless/operating no land		0
0.01	- 0.49	0.002	- 0.20	1
0.50	- 0.99	0.21	- 0.40	2
1.00	- 1.24	0.41	- 0.50	3
1.25	- 2.49	0.51	- 1.00	4
2.50	- 4.99	1.01	- 2.00	5
5.00	- 7.49	2.03	- 3.03	6
7.50	- 9.99	3.04	- 4.04	7
10.00	- 12.49	4.05	- 5.05	8
12.50	- 14.99	5.06	- 6.07	9
15.00	- 19.99	6.08	- 8.09	10
20.00	- 24.99	8.10	- 10.12	11
25.00	- 29.99	10.13	- 12.14	12
30.00	- 49.99	12.15	- 20.24	13
50.00	& above	20.25	& above	14
@ Households owning/operating land less than 0.002 hectares are included in size class 0.				
Households owning land but not operating			 code 0.1
Households neither owning nor operating land			 code 0.2

TABLE (1) : ESTIMATED NUMBER OF HOUSEHOLDS, AREA OWNED AND HOUSEHOLD SIZE BY SIZE CLASS OF HOUSEHOLD OWNERSHIP HOLDING

State : Tripura

Urban & Rural

number of sample blocks & villages : 144

number of sample households : 896

size class of household ownership holding (code)	estimated number of households (00)			estimated area owned (00 hectares)			estimated household size		
	sub-sample 1	sub-sample 2	combined	sub-sample 1	sub-sample 2	combined	sub-sample 1	sub-sample 2	combined
(1)	(2)	(3)	(4)	(5)	(6)	(7)	(8)	(9)	(10)
0	236	383	310	-	-	-	3.61	3.41	3.48
1	473	355	414	40	26	33	5.02	4.42	4.76
2	207	202	204	61	60	61	4.67	4.72	4.70
3	131	129	130	60	60	60	5.88	4.83	5.36
4	363	418	390	266	328	297	5.24	6.06	5.69
5	389	393	391	559	546	553	6.02	6.19	6.11
6	112	156	134	279	376	327	7.34	7.69	7.54
7	24	19	22	80	67	73	9.12	12.58	10.41
8	10	20	15	43	86	65	11.40	9.80	10.33
9	10	12	11	50	64	57	9.50	11.67	10.73
10	-	4	2	-	26	13	-	6.00	6.00
11	-	-	-	-	-	-	-	-	-
12	5	4	4	56	41	48	4.80	10.00	8.00
13	-	-	-	-	-	-	-	-	-
14	-	-	-	-	-	-	-	-	-
all sizes	1960	2095	2027	1494	1680	1587	5.35	5.37	5.36

TABLE (2) : PERCENTAGE AND CUMULATIVE PERCENTAGE DISTRIBUTION OF HOUSEHOLD AND OF AREA OWNED BY SIZE CLASS OF HOUSEHOLD OWNERSHIP HOLDING

Urban & Rural

State : Tripura

number of sample blocks & villages : 144

number of sample households : 896

size class of household ownership holding (code)	average area owned by household (hectares)	percentage of		cumulative percentage of	
		households	area owned	households	area owned
(1)	(2)	(3)	(4)	(5)	(6)
0	-	15.29	-	15.29	-
1	0.08	20.42	2.08	35.71	2.08
2	0.30	10.06	3.84	45.77	5.92
3	0.46	6.42	3.78	52.19	9.70
4	0.76	19.24	18.72	71.43	28.42
5	1.41	19.29	34.85	90.72	63.27
6	2.44	6.61	20.60	97.33	83.87
7	3.31	1.09	4.60	98.42	88.47
8	4.33	0.74	4.70	99.16	92.57
9	5.18	0.54	3.59	99.70	96.16
10	6.50	0.10	0.82	99.80	96.98
11	-	-	-	99.80	96.98
12	12.30	0.20	3.02	100.00	100.00
13	-	-	-	100.00	100.00
14	-	-	-	100.00	100.00
all sizes	70	100.00	100.00		
estimated number of households (00)	x	2027	x		
estimated area owned (00 hectares)	x	x	1587		

TABLE (3) : PERCENTAGE OF HOUSEHOLDS LEASING OUT LAND UNDER DIFFERENT TERMS TO ALL HOUSEHOLDS OWNING LAND AND PERCENTAGE OF AREA LEASED OUT TO AREA OWNED BY SIZE CLASS OF HOUSEHOLD OWNERSHIP HOLDING

State : Tripura

Urban & Rural

number of sample blocks & villages : 144

number of sample households : 896

size class of household ownership holding (code)	esti- mated number of house- holds (00)	percentage of households leasing out land				esti- mated area owned (00 hect- ares)	percentage of owned area leased out			
		under usufru- ctuary mort- gage	on crop sharing basis	on other terms	under any term		under usufru- ctuary mort- gage	on crop sharing basis	on other terms	total
(1)	(2)	(3)	(4)	(5)	(6)	(7)	(8)	(9)	(10)	(11)
1	414	1.21	1.45	3.62	6.28	33	2.44	2.44	2.44	7.31
2	204	5.39	18.63	7.35	30.39	61	2.65	12.58	3.97	19.20
3	130	3.85	13.85	5.38	23.08	60	1.35	7.43	2.03	10.81
4	390	13.33	17.95	5.64	33.08	297	4.23	9.55	1.23	15.01
5	391	13.04	15.86	7.42	33.50	553	3.29	8.78	2.05	14.12
6	134	13.43	26.87	10.45	41.79	327	1.61	11.39	1.23	14.23
7	22	18.18	18.18	9.09	27.27	73	1.10	0.56	0.00	1.66
8	15	13.33	20.00	13.34	46.67	65	5.62	3.13	8.75	17.50
9	11	36.36	18.18	18.18	63.64	57	6.43	4.29	0.71	11.43
10	2	-	-	-	-	13	-	-	-	-
11	-	-	-	-	-	-	-	-	-	-
12	4	-	100.00	-	100.00	48	-	4.20	-	4.20
13	-	-	-	-	-	-	-	-	-	-
14	-	-	-	-	-	-	-	-	-	-
all sizes	1717	8.91	14.21	6.35	26.61	1587	2.98	8.44	1.06	13.28

(4) : PERCENTAGE OF HOUSEHOLDS LEASING IN LAND UNDER DIFFERENT TERMS TO ALL HOUSEHOLDS OWNING LAND AND PERCENTAGE OF AREA LEASED IN TO AREA OWNED BY SIZE CLASS OF HOUSEHOLD OWNERSHIP HOLDING

State : Tripura number of sample blocks & villages : 144	Urban & Rural number of sample households : 896													
	size class of household ownership holding (code)	esti- mated number of house- holds (00)	percentage of households leasing in land					esti- mated area owned (00 hect- are)	percentage of area leased in					total
			for fixed money	for pro- duce	for share of pro- duce	under usufru- ctuary mort- gage	on other terms		under any term	for fixed money	for pro- duce	for share of pro- duce	under usufru- ctuary mort- gage	
(1)	(2)	(3)	(4)	(5)	(6)	(7)	(8)	(9)	(10)	(11)	(12)	(13)	(14)	(15)
0*	310	6.77	1.94	8.71	0.65	50.97	59.35	-	1	1	25	0	26	53
1	414	1.93	0.48	6.52	0.72	7.49	15.22	33	0.00	9.76	43.90	0.00	7.32	60.98
2	204	2.94	3.92	21.08	-	4.90	31.37	61	1.32	3.97	28.48	-	0.66	34.43
3	130	3.85	2.31	21.54	-	8.46	33.85	60	0.68	3.38	19.59	-	3.38	27.03
4	390	3.33	3.33	21.03	0.77	11.54	33.85	297	2.46	1.64	12.68	0.14	3.54	20.46
5	391	3.84	0.51	16.37	2.81	10.23	32.22	553	1.32	0.36	4.68	0.66	1.32	8.34
6	134	1.49	2.24	11.19	1.49	2.98	17.91	327	0.00	0.12	2.60	0.12	0.25	3.09
7	22	9.09	9.09	-	-	9.09	27.27	73	1.10	1.11	-	-	2.76	4.97
8	15	-	-	-	-	13.33	13.33	65	-	-	-	-	1.25	1.25
9	11	-	-	-	-	-	-	57	-	-	-	-	-	-
10	2	-	-	-	-	-	-	13	-	-	-	-	-	-
11	-	-	-	-	-	-	-	-	-	-	-	-	-	-
12	4	-	-	-	-	-	-	0	-	-	-	-	-	-
13	-	-	-	-	-	-	-	-	-	-	-	-	-	-
14	-	-	-	-	-	-	-	-	-	-	-	-	-	-
all sizes	2027	3.55	1.07	14.11	1.04	14.95	31.77	1587	1.07	1.07	8.00	0.32	3.34	14.60

* For the size class 0 (landless) actual area has been recorded in columns 10 to 15 instead of percentage.

TABLE (5) : ESTIMATED NUMBER OF HOUSEHOLDS AREA OPERATED AND HOUSEHOLD SIZE BY SIZE CLASS OF HOUSEHOLD OPERATIONAL HOLDING

State : Tripura

Urban & Rural

number of sample blocks & villages : 144

number of sample households : 896

size class of household operational holding (code)	estimated number of households (00)			estimated area operated (00 hectares)			estimated household size		
	sub-sample 1	sub-sample 2	combined	sub-sample 1	sub-sample 2	combined	sub-sample 1	sub-sample 2	combined
	(1)	(2)	(3)	(4)	(5)	(6)	(7)	(8)	(9)
0	337	511	425	x	x	x	4.36	3.71	3.96
0.1	191	269	231	x	x	x	x	x	x
0.2	146	242	194	x	x	x	x	x	x
1	416	326	371	40	24	32	4.69	3.95	4.36
2	195	157	176	57	48	53	4.50	5.36	4.89
3	159	97	128	73	44	59	5.49	5.26	5.41
4	309	426	367	226	323	275	5.62	5.99	5.84
5	397	389	392	571	549	560	5.92	6.48	6.21
6	109	138	124	260	319	290	7.69	7.70	7.66
7	33	15	24	118	49	83	10.39	14.07	11.58
8	5	24	14	24	105	61	8.60	10.50	10.50
9	-	8	4	-	41	20	-	10.50	10.50
10	-	-	-	-	-	-	-	-	-
11	-	4	2	-	39	19	-	10.00	10.00
12	-	-	-	-	-	-	-	-	-
13	-	-	-	-	-	-	-	-	-
14	-	-	-	-	-	-	-	-	-
all sizes	1960	2095	2027	1369	1541	1456	5.35	5.37	5.36

TABLE (6) : PERCENTAGE AND CUMILATIVE PERCENTAGE DISTRIBUTION OF HOUSEHOLDS AND OF AREA OPERATED BY SIZE CLASS OF HOUSEHOLD OPERATIONAL HOLDING

State : Tripura

Urban & Rural

number of sample blocks & villages : 144

number of sample households : 896

size class of household operational holding (code)	average area operated by household (hectares)	percentage of		cumulative percentage of	
		households	area operated	households	area operated
(1)	(2)	(3)	(4)	(5)	(6)
0	-	20.97	-	20.97	-
1	0.09	18.30	2.20	39.27	2.20
2	0.30	8.68	3.64	47.95	5.84
3	0.46	6.31	4.06	54.26	9.90
4	0.75	18.11	18.90	72.37	28.80
5	1.43	19.34	38.49	91.71	67.29
6	2.34	6.12	19.93	97.83	87.22
7	3.46	1.18	5.70	99.01	92.92
8	4.57	0.69	4.40	99.70	97.32
9	5.12	0.20	1.37	99.90	98.69
10	-	-	-	99.90	98.69
11	9.75	0.10	1.31	100.00	100.00
12	-	-	-	100.00	100.00
13	-	-	-	100.00	100.00
14	-	-	-	100.00	100.00
all sizes	0.72	100.00	100.00		
estimated number of households (00)	x	2027	x		
estimated area operated (00 hectares)	x	x	1455		

average area operated by land

TABLE (7) : ESTIMATED NUMBER OF OWNED CATTLE AND OWNED BUFFALOES PER 100 HOUSEHOLDS BY SIZE CLASS OF HOUSEHOLD OPERATIONAL HOLDING

State : Tripura

Urban & Rural

number of sample blocks & villages : 144

number of sample households : 896

size class of household operational holding (code)	number (0.00) of cattle			owned per 100 households			young stock	total
	males over 3 years			females over 3 years				
	working	others	sub-total	in milk	others	sub-total		
(1)	(2)	(3)	(4)	(5)	(6)	(7)	(8)	(9)
0	1.88	1.41	3.29	5.65	8.00	13.65	10.12	27.06
1	8.89	0.54	9.43	18.33	13.48	31.81	26.42	67.66
2	34.09	3.41	37.50	25.57	25.00	50.57	43.75	131.82
3	64.84	7.81	72.65	62.50	30.47	92.97	67.19	232.81
4	118.80	3.81	122.61	47.41	38.69	86.10	71.39	280.10
5	184.18	11.73	195.91	66.07	53.06	119.13	97.96	413.00
6	212.10	20.16	232.26	91.13	88.71	179.84	129.84	541.94
7	275.00	79.17	354.17	83.33	83.33	166.66	145.83	666.66
8	207.14	14.29	221.43	178.57	64.29	242.86	235.71	700.00
9	200.00	-	200.00	50.00	250.00	300.00	300.00	800.00
10	-	-	-	-	-	-	-	-
11	400.00	-	400.00	200.00	-	200.00	200.00	800.00
12	-	-	-	-	-	-	-	-
13	-	-	-	-	-	-	-	-
14	-	-	-	-	-	-	-	-
all sizes	64.66	6.41	91.07	40.11	32.86	72.97	59.00	223.04

TABLE (7) : CONTD. : ESTIMATED NUMBER OF OWNED CATTLE AND OWNED BUFFALOES PER
100 HOUSEHOLDS BY SIZE CLASS OF HOUSEHOLD OPERATIONAL HOLDING

State : Tripura

Urban & Rural

number of sample blocks & villages : 144

number of sample households : 896

size class of household operational holding (code)	number (0.00) of buffaloes owned per 100 households						young stock	total	number of cattle and buffaloes per 100 households (0.00)
	males over 3 years			females over 3 years					
	working	others	sub-total	in milk	others	sub-total			
(1)	(10)	(11)	(12)	(13)	(14)	(15)	(16)	(17)	(18)
0	-	-	-	-	-	-	-	-	27.06
1	-	-	-	-	-	-	-	-	67.66
2	-	-	-	-	-	-	-	-	131.62
3	-	-	-	-	-	-	-	-	232.81
4	3.81	-	3.81	-	3.81	3.81	5.99	13.61	293.71
5	4.59	-	4.59	1.02	1.82	2.04	1.02	7.65	420.65
6	20.16	4.03	24.19	1.61	1.62	3.23	1.61	29.03	540.97
7	91.67	-	91.67	-	-	-	-	91.67	750.33
8	70.57	-	70.57	-	20.57	20.57	14.29	121.43	821.43
9	100.00	-	100.00	-	-	-	-	100.00	900.00
10	-	-	-	-	-	-	-	-	-
11	-	-	-	-	-	-	-	-	600.00
12	-	-	-	-	-	-	-	-	-
13	-	-	-	-	-	-	-	-	-
14	-	-	-	-	-	-	-	-	-
all sizes	4.63	0.25	4.63	0.30	1.18	1.48	1.40	7.84	230.00

TABLE (8)

ESTIMATED NUMBER OF OWNED CATTLE AND OWNED BUFFALOES PER 100 HECTARES OF OPERATED AREA BY SIZE CLASS OF HOUSEHOLD OPERATIONAL HOLDING

State : Tripura

Urban & Rural

number of sample blocks & villages : 144

number of sample households : 896

size class of household operational holding (code)	number(0.00) of cattle owned per 100 hectares of operated area							
	males over 3 years			females over 3 years			young stock	total
	working	others	sub-total	in milk	others	sub-total		
(1)	(2)	(3)	(4)	(5)	(6)	(7)	(8)	(9)
0*	8	6	14	24	34	58	43	115
1	103.12	6.25	109.37	212.50	156.25	368.75	306.25	784.37
2	113.21	11.32	124.53	84.91	83.01	167.92	145.28	437.73
3	140.68	16.95	157.63	135.59	66.10	201.69	145.76	505.08
4	158.54	5.09	163.63	63.27	51.64	114.91	95.27	373.81
5	128.93	8.21	137.14	46.25	37.14	83.39	68.57	289.10
6	90.69	8.62	99.31	38.97	37.93	76.90	55.52	231.73
7	79.52	22.89	102.41	24.10	24.10	48.20	42.17	192.78
8	45.31	3.13	48.44	39.06	14.06	53.12	51.56	153.12
9	40.00	-	40.00	10.00	50.00	60.00	60.00	160.00
10	-	-	-	-	-	-	-	-
11	42.11	-	42.11	21.05	-	21.05	21.05	84.21
12	-	-	-	-	-	-	-	-
13	-	-	-	-	-	-	-	-
14	-	-	-	-	-	-	-	-
all sizes	117.94	8.93	126.87	53.87	45.77	101.65	82.20	310.72

* For the size class 0 (operating no land) actual number of cattle/buffaloes has been recorded in columns 2-9 instead of number per 100 hectares of operated area.

LE (8) CONTD. : ESTIMATED NUMBER OF OWNED CATTLE AND OWNED BUFFALOES PER 100 HECTARES OF OPERATED AREA BY SIZE CLASS OF HOUSEHOLD OPERATIONAL HOLDING

State : Tripura

Urban & Rural

number of sample blocks & villages : 144

number of sample households : 896

size class of household operational (code)	number (0.00) of buffaloes owned per 100 hectares of operated area						young stock	total	number of cattle and buffaloes owned per 100 hectares of operated area
	males over 3 years			females over 3 years					
	working	others	sub-total	in milk	others	sub-total			
(1)	(10)	(11)	(12)	(13)	(14)	(15)	(16)	(17)	(18)
0*	-	-	-	-	-	-	-	-	115
1	-	-	-	-	-	-	-	-	784.37
2	-	-	-	-	-	-	-	-	437.73
3	-	-	-	-	-	-	-	-	505.08
4	5.09	-	5.09	-	5.09	5.09	8.00	18.18	391.99
5	3.21	-	3.21	0.71	0.71	1.42	0.71	5.34	294.44
6	8.62	1.72	10.34	0.69	2.69	1.38	0.69	12.41	244.14
7	26.51	-	26.51	-	-	-	-	26.51	219.29
8	17.19	-	17.19	-	6.25	6.25	3.12	26.56	179.68
9	20.00	-	20.00	-	-	-	-	20.00	180.00
10	-	-	-	-	-	-	-	-	-
11	-	-	-	-	-	-	-	-	84.21
12	-	-	-	-	-	-	-	-	-
13	-	-	-	-	-	-	-	-	-
14	-	-	-	-	-	-	-	-	-
all sizes	6.46	0.34	6.80	0.41	1.65	2.06	2.06	10.92	321.64

* For the size class 0 (operating no land) actual number of cattle/buffaloes has been recorded in columns 10-18 instead of number per 100 hectares of operated area.

TABLE (9) : PERCENTAGE OF HOUSEHOLDS NOT HAVING WORKING CATTLE AND BUFFALOES BY SIZE CLASS OF HOUSEHOLD OPERATIONAL HOLDING

State : Tripura

Urban & Rural

number of sample blocks & villages : 144

number of sample households : 896

size class of household operational holding (code)	number of households (00)	percentage of households not having working animals		percentage of households not having any working cattle or buffaloes (5)
		cattle (3)	buffaloes (4)	
0	425	99.06	100.00	99.06
1	371	90.30	100.00	90.30
2	176	79.55	100.00	79.55
3	128	66.41	100.00	66.41
4	367	33.24	62.94	3.27
5	392	15.21	80.61	2.55
6	124	11.29	79.03	8.87
7	24	8.33	75.00	8.33
8	14	14.28	57.14	-
9	4	50.00	50.00	-
10	-	-	-	-
11	2	-	100.00	-
12	-	-	-	-
13	-	-	-	-
14	-	-	-	-
all sizes	2027	58.12	38.33	1.92

TABLE (10) : ESTIMATED NUMBER OF LIVESTOCK (OTHER THAN CATTLE AND BUFFALOES) AND POULTRY OWNED PER 100 HOUSEHOLDS BY SIZE CLASS OF HOUSEHOLD OPERATIONAL HOLDING

State : Tripura

Urban & Rural

number of sample blocks & villages : 144

number of sample households : 896

size class of household operational holding (code)	number (0.00) owned per 100 households								
	sheep	goats	horses & ponies	mules	donkeys	camels	other draught animals	pigs	poultry
(1)	(2)	(3)	(4)	(5)	(6)	(7)	(8)	(9)	(10)
0	-	8.47	-	-	-	-	-	-	43.53
1	-	17.25	-	-	-	-	-	-	49.06
2	-	17.04	3.4	-	-	-	-	1.14	75.57
3	-	29.69	-	-	-	-	-	-	50.00
4	-	47.41	-	-	-	-	-	3.27	110.08
5	1.79	86.22	-	-	-	-	1.28	4.59	140.31
6	-	100.81	1.61	-	-	-	-	13.71	392.74
7	-	45.83	8.33	-	-	-	-	-	395.83
8	-	171.43	-	-	-	-	-	28.57	242.86
9	-	100.00	-	-	-	-	-	-	250.00
10	-	-	-	-	-	-	-	-	-
11	-	400.00	-	-	-	-	-	-	1500.00
12	-	-	-	-	-	-	-	-	-
13	-	-	-	-	-	-	-	-	-
14	-	-	-	-	-	-	-	-	-
all sizes	0.35	42.03	0.49	-	-	-	0.25	2.61	107.25

TABLE (11) : ESTIMATED NUMBER OF AGRICULTURAL MACHINERY OWNED PER 100 HOUSEHOLDS BY SIZE CLASS OF HOUSEHOLD OPERATIONAL HOLDING

State : Tripura

Urban & Rural

number of sample blocks & villages : 144

number of sample households : 896

size class of household operational holding (code)	number (0.00) of agricultural machinery owned per 100 households										
	ploughs wooden	ploughs iron	harrows	seed drills	sprayers	dusters	tractors				
							less than 10 h.p.	10-14 h.p.	15-19 h.p.	20 h.p. & above	h.p. available
(1)	(2)	(3)	(4)	(5)	(6)	(7)	(8)	(9)	(10)	(11)	(12)
0	1.41	-	1.88	-	-	-	-	-	-	-	-
1	5.39	-	3.77	-	-	-	-	-	-	-	-
2	28.41	-	17.04	-	-	4.54	-	-	-	-	-
3	50.78	2.34	29.69	4.69	-	6.25	-	-	-	-	-
4	92.64	-	57.22	2.18	0.82	5.45	-	-	-	-	-
5	131.63	4.59	73.98	4.59	6.38	4.85	-	-	-	-	-
6	140.32	8.06	101.61	8.06	-	18.55	-	-	-	-	-
7	233.33	-	91.67	-	8.33	75.00	-	-	-	-	-
8	264.28	-	207.14	-	-	-	-	-	-	-	-
9	200.00	-	100.00	-	-	-	-	-	-	-	-
10	-	-	-	-	-	-	-	-	-	-	-
11	200.00	-	100.00	-	-	-	-	-	-	-	-
12	-	-	-	-	-	-	-	-	-	-	-
13	-	-	-	-	-	-	-	-	-	-	-
14	-	-	-	-	-	-	-	-	-	-	-
all sizes	62.95	1.53	38.14	2.07	1.48	4.74	-	-	-	-	-

TABLE 11) CONTD. : ESTIMATED NUMBER OF AGRICULTURAL MACHINERY OWNED PER 100 HOUSEHOLDS BY SIZE CLASS OF HOUSEHOLD OPERATIONAL HOLDING

State : Tripura

Urban & Rural

number of sample blocks & villages : 144

number of sample households : 896

size class of household operational holding (code)	number (0.00) of agricultural machinery owned per 100 households						
	threshers	pumps			cane crushers	oil crushers	others
		electric	diesel	other			
(1)	(13)	(14)	(15)	(16)	(17)	(18)	(19)
0	-	-	-	-	-	-	41.65
1	-	-	-	-	-	-	139.62
2	2.84	-	-	-	-	-	239.20
3	2.34	-	-	-	-	-	264.06
4	1.63	-	-	-	-	-	400.82
5	3.83	-	-	-	-	-	521.43
6	-	-	-	-	-	-	584.68
7	-	-	-	-	-	-	850.00
8	-	-	14.28	-	-	-	585.71
9	-	-	-	-	-	-	900.00
10	-	-	-	-	-	-	-
11	-	-	-	-	-	-	700.00
12	-	-	-	-	-	-	-
13	-	-	-	-	-	-	-
14	-	-	-	-	-	-	-
all sizes	1.43	-	0.10	-	-	-	1297.46

TABLE (12) : ESTIMATED NUMBER OF AGRICULTURAL MACHINERY PER 100 HECTARES OF OPERATED AREA AND AREA OPERATED PER TRACTOR BY SIZE CLASS OF HOUSEHOLD OPERATIONAL HOLDING

State : Tripura

Urban & Rural

number of sample blocks & villages : 144

number of sample households : 896

size class of household operational holding (code)	estimated number (0.00) of agricultural machinery per 100 hectares of operated area				estimated area operated per tractor (00 hectares)					
	ploughs wooden	ploughs iron	harrow	seed drills	less than 10 h.p.	10-14 h.p.	15-19 h.p.	20 h.p. & above	h.p. not available	all
(1)	(2)	(3)	(4)	(5)	(6)	(7)	(8)	(9)	(10)	(11)
1	62.50	-	43.75	-	-	-	-	-	-	-
2	94.34	-	56.60	-	-	-	-	-	-	-
3	110.17	5.08	64.41	10.17	-	-	-	-	-	-
4	123.64	-	76.36	2.91	-	-	-	-	-	-
5	92.14	3.21	51.79	3.21	-	-	-	-	-	-
6	60.00	3.45	43.45	3.45	-	-	-	-	-	-
7	67.47	-	26.51	-	-	-	-	-	-	-
8	57.81	-	45.31	-	-	-	-	-	-	-
9	40.00	-	20.00	-	-	-	-	-	-	-
10	-	-	-	-	-	-	-	-	-	-
11	21.05	-	10.53	-	-	-	-	-	-	-
12	-	-	-	-	-	-	-	-	-	-
13	-	-	-	-	-	-	-	-	-	-
14	-	-	-	-	-	-	-	-	-	-
all sizes	87.70	2.13	53.13	2.89	-	-	-	-	-	-

PERCENTAGE HOUSEHOLDS REPORTING PUMPS AND PLOUGHS BY SIZE CLASS OF HOUSEHOLD
OPERATIONAL HOLDING

State : Tripura

Urban & Rural

number of sample blocks & villages : 144

number of sample households : 896

size class of household operational holding (code)	number of households (00)	percentage of households reporting					
		ploughs		neither wooden nor iron plough	pumps		
(1)	(2)	wooden	iron	(5)	electric	diesel	other
(1)	(2)	(3)	(4)	(5)	(6)	(7)	(8)
0	425	1.88	-	98.12	-	-	-
1	371	4.58	-	95.42	-	-	-
2	176	25.00	1.70	75.00	-	-	-
3	128	41.41	-	58.59	-	-	-
4	367	77.38	2.72	22.62	-	-	-
5	392	90.56	1.28	9.44	-	-	-
6	124	94.35	-	5.65	-	-	-
7	24	91.67	-	8.33	-	-	-
8	14	100.00	-	-	-	14.28	-
9	4	100.00	-	-	-	-	-
10	-	-	-	-	-	-	-
11	2	100.00	-	-	-	-	-
12	-	-	-	-	-	-	-
13	-	-	-	-	-	-	-
14	-	-	-	-	-	-	-
all sizes	2027	45.44	0.89	54.56	-	0.10	-

TABLE (15) : ESTIMATED NUMBER OF TRANSPORT EQUIPMENTS OWNED PER 100 HOUSEHOLDS BY SIZE CLASS OF HOUSEHOLD OPERATIONAL HOLDING

State : Tripura

Urban & Rural

number of sample blocks & villages : 144

number of sample households : 896

size class of household OPERATIONAL HOLDING (code)	number (0.00) of transport equipments owned per 100 households					
	bicycles	motor cars	trucks/ lorries	buses	motor cycles/ scooters	other transport equipment
(1)	(2)	(3)	(4)	(5)	(6)	(7)
0	3.29	-	-	-	-	3.53
1	1.89	-	0.54	-	-	0.81
2	-	-	-	-	-	-
3	2.34	-	-	-	-	-
4	1.63	-	-	-	-	3.27
5	1.78	-	-	-	-	0.51
6	5.64	-	-	-	-	-
7	8.33	-	-	-	-	-
8	7.14	-	-	-	-	-
9	-	-	-	-	-	-
10	-	-	-	-	-	-
11	-	-	-	-	-	-
12	-	-	-	-	-	-
13	-	-	-	-	-	-
14	-	-	-	-	-	-
all sizes	2.32	-	0.10	-	-	1.58

PERCENTAGE OF SHARES OF VALUE OF OWNED (i) CATTLE (ii) BUFFALOES (iii) OTHER LIVESTOCK
(iv) AGRICULTURAL MACHINERY (v) NON-FARM BUSINESS EQUIPMENTS (vi) TRANSPORT EQUIPMENTS
IN THE TOTAL VALUE OF ALL THE SIX ASSET GROUPS BY SIZE CLASS OF HOUSEHOLD OPERATIONAL HOLDING

State : Tripura

Urban & Rural

number of sample blocks & villages : 144

number of sample households : 896

size class of household operational holding (code)	total value of six asset groups (Rs. 00)	value of asset per 100 households (Rs. 00)	value of assets per 100 hectares of operated area (Rs. 00)	percentage shares of value of owned					
				cattle	buffaloes	other live-stock	agricul-tural machinery	non-farm business equipments	transport equipment
(1)	(2)	(3)	(4)	(5)	(6)	(7)	(8)	(9)	(10)
0	58963	13874	58963*	15.96	-	1.06	8.98	39.77	41.43
1	84021	22647	262566	24.96	-	2.10	2.44	22.53	47.67
2	24128	13709	45525	73.52	-	9.12	8.22	9.14	-
3	33491	26165	56764	74.79	-	3.18	6.76	13.84	1.43
4	176474	48084	64171	62.46	5.50	3.37	5.95	19.09	3.63
5	237324	60542	42379	73.69	2.53	17.43	5.06	1.03	0.26
6	95943	77377	33086	78.61	9.01	5.30	5.43	0.51	1.14
7	30525	127187	36777	68.58	20.76	2.63	5.95	0.91	1.17
8	23460	167571	36656	41.02	24.31	4.13	28.45	-	1.22
9	3240	96000	19200	60.94	31.25	2.50	5.31	-	-
10	-	-	-	-	-	-	-	-	-
11	2350	117500	72368	87.66	-	8.51	3.83	-	-
12	-	-	-	-	-	-	-	-	-
13	-	-	-	-	-	-	-	-	-
14	-	-	-	-	-	-	-	-	-
all sizes	770521	30013	52957	60.85	4.88	7.86	5.63	11.21	9.57

* For the size class 0 actual value of asset (Rs. 00) is recorded in column 4 instead of value of asset per 100 hectares of operated area.

TABLE (17) : ESTIMATED NUMBER OF OPERATIONAL HOLDINGS AND AREA OPERATED
BY SIZE CLASS OF OPERATIONAL HOLDING

State : Tripura

Urban & Rural

number of sample blocks & villages : 144

number of sample households : 896

size class of operational holding (code)	estimated number of operational holdings (00)			estimated area operated (00 hectares)		
	sub-sample 1	sub-sample 2	combined	sub-sample 1	sub-sample 2	combined
(1)	(2)	(3)	(4)	(5)	(6)	(7)
1	416	326	371	40	24	32
2	195	157	176	57	48	53
3	159	97	120	73	44	59
4	309	426	368	226	323	275
5	397	389	393	571	549	560
6	109	138	124	260	319	290
7	33	15	24	118	49	83
8	5	24	14	24	105	64
9	-	8	4	-	41	20
10	-	-	-	-	-	-
11	-	4	2	-	39	19
12	-	-	-	-	-	-
13	-	-	-	-	-	-
14	-	-	-	-	-	-
all sizes	1623	1584	1604	1369	1541	1486

TABLE (18) : PERCENTAGE AND CUMULATIVE PERCENTAGE DISTRIBUTION OF OPERATIONAL HOLDINGS AND AREA OPERATED BY SIZE CLASS OF OPERATIONAL HOLDING

State : Tripura

Urban & Rural

number of sample blocks & villages : 144

number of sample households : 896

size class of operational holding (code)	average area of an operational holding (hectares)	percentage of		cumulative percentage of	
		operational holdings	area operated	operational holdings	area operated
(1)	(2)	(3)	(4)	(5)	(6)
1	0.09	23.13	2.20	23.13	2.20
2	0.30	10.97	3.64	34.10	5.84
3	0.46	7.98	4.05	42.08	9.89
4	0.75	22.94	18.90	65.02	28.79
5	1.42	24.50	38.49	89.52	67.28
6	2.34	7.73	19.93	97.25	87.21
7	3.46	1.50	5.70	98.75	92.91
8	4.57	0.87	4.40	99.62	97.31
9	5.12	0.25	1.38	99.87	98.69
10	-	-	-	99.87	98.69
11	9.75	0.13	1.31	100.00	100.00
12	-	-	-	100.00	100.00
13	-	-	-	100.00	100.00
14	-	-	-	100.00	100.00
all sizes	0.91	100.00	100.00		
estimated number of operational holding (00)	x	1603	x		
estimated area operated (00 hectares)	x	x	1455		

TABLE (19) : PERCENTAGE OF HOLDINGS REPORTING OWNED AREAS AND THOSE REPORTING LEASED IN AREAS AND PERCENTAGE OF OPERATED AREA OWNED AND LEASED IN UNDER DIFFERENT TERMS OF LEASING IN BY SIZE CLASS OF OPERATIONAL HOLDING.

State : Tripura.

Urban & Rural

number of sample blocks & villages : 144

number of sample households : 896

size class of operational holding (code)	estimated number of holding (00)	owned area	percentage of holding reporting leased in area					
			for fixed money	for fixed produce	for share of produce	under usufructuary mortgage	other terms	under any term
(1)	(2)	(3)	(4)	(5)	(6)	(7)	(8)	(9)
1	371	89.22	1.08	-	2.95	-	11.32	15.63
2	176	96.02	1.14	-	13.07	-	4.55	17.61
3	128	96.09	1.56	2.34	9.38	-	0.78	14.06
4	368	97.01	2.18	2.17	23.10	1.63	10.05	30.98
5	393	98.22	4.33	2.80	29.00	1.02	8.40	38.68
6	124	100.00	7.26	10.48	12.90	1.61	13.71	37.10
7	24	83.33	-	-	20.83	-	8.33	29.16
8	14	100.00	-	14.29	-	-	28.57	42.86
9	4	100.00	-	-	-	-	-	-
10	-	-	-	-	-	-	-	-
11	2	100.00	-	-	-	-	-	-
12	-	-	-	-	-	-	-	-
13	-	-	-	-	-	-	-	-
14	-	-	-	-	-	-	-	-
all sizes	1604	95.39	2.62	2.31	16.58	0.75	8.98	26.93

TABLE (19) CONTD. : PERCENTAGE OF HOLDINGS REPORTING OWNED AREAS AND THOSE REPORTING LEASED IN AREAS AND PERCENTAGE OF OPERATED AREA OWNED AND LEASED IN UNDER DIFFERENT TERMS OF LEASING BY SIZE CLASS OF OPERATIONAL HOLDING

State : Tripura

Urban & Rural

number of sample blocks & villages : 144

number of sample households : 896

size class of operational holding (code)	estimated area operated (00 hectares)	percentage of operated area						total
		owned	leased in				other terms	
			for fixed money	for fixed produce	for share of produce	under usufructuary mortgage		
(1)	(10)	(11)	(12)	(13)	(14)	(15)	(16)	(17)
1	32	91.02	0.00	-	3.05	-	5.13	8.98
2	53	85.23	0.77	-	6.15	-	3.85	10.77
3	59	93.79	0.00	0.69	4.14	-	0.69	6.21
4	275	83.78	0.59	0.88	12.98	0.30	1.47	16.22
5	560	84.97	1.23	1.08	11.56	0.15	1.01	15.03
6	290	89.94	2.79	0.84	2.65	0.56	3.21	16.06
7	83	79.61	-	-	13.11	-	7.28	20.39
8	64	94.34	-	1.26	-	-	4.40	5.66
9	20	100.00	-	-	-	-	-	-
10	-	-	-	-	-	-	-	-
11	10	100.00	-	-	-	-	-	-
12	-	-	-	-	-	-	-	-
13	-	-	-	-	-	-	-	-
14	-	-	-	-	-	-	-	-
all sizes	1455	86.87	1.17	0.83	8.71	0.22	2.20	13.13

TABLE (20) : PERCENTAGE OF INDIVIDUAL AND JOINT OPERATIONAL HOLDINGS AND THEIR PERCENTAGE SHARES OF AREA OPERATED BY SIZE CLASS OF OPERATIONAL HOLDING

State : Tripura

Urban & Rural

number of sample blocks & villages : 144

number of sample households : 896

size class of operational holding (code)	number of operational (00)	percentage of holdings		area operated (00 hectares)	percentage of area operated	
		individual	joint		individually	jointly
(1)	(2)	(3)	(4)	(5)	(6)	(7)
1	371	100.00	-	32	100.00	-
2	176	100.00	-	53	100.00	-
3	128	100.00	-	59	100.00	-
4	368	100.00	-	275	100.00	-
5	393	100.00	-	560	100.00	-
6	124	100.00	-	290	100.00	-
7	24	100.00	-	83	100.00	-
8	14	100.00	-	64	100.00	-
9	4	100.00	-	20	100.00	-
10	-	-	-	-	-	-
11	2	100.00	-	19	100.00	-
12	-	-	-	-	-	-
13	-	-	-	-	-	-
14	-	-	-	-	-	-
all sizes	1604	100.00	-	1455	100.00	-

TABLE (21) : AVERAGE NUMBER OF ATTACHED FARM WORKERS PER OPERATIONAL HOLDING (REPORTING)
FOR DIFFERENT MAJOR AGRICULTURAL SEASONS BY SIZE CLASS OF OPERATIONAL HOLDING

State : Tripura

Urban & Rural

number of sample blocks & villages : 144

number of sample households : 896

size class of operational holding (code)	number of holdings (00)	percentage of hold- ings reporting attached farm workers	average number of farm workers per reporting holding during major crop season	average number of farm workers per repor- ting holding during major crop season				
				autumn	winter	spring	summer	perennial
(1)	(2)	(3)	(4)	(5)	(6)	(7)	(8)	(9)
1	371	3.23	1.00	1.00	1.00	-	-	-
2	176	13.64	1.00	1.00	1.00	-	-	-
3	120	1.56	1.00	1.00	-	-	-	-
4	360	5.10	1.00	1.00	1.00	-	-	-
5	139	2.51	1.14	1.00	1.10	2.00	-	-
6	124	13.71	1.00	1.00	1.00	-	-	-
7	24	20.83	1.00	-	1.00	-	-	-
8	14	42.06	1.33	1.33	-	-	-	-
9	4	50.00	1.00	1.00	-	-	-	-
10	-	-	-	-	-	-	-	-
11	2	100.00	1.00	1.00	-	-	-	-
12	-	-	-	-	-	-	-	-
13	-	-	-	-	-	-	-	-
14	-	-	-	-	-	-	-	-
all sizes	1604	7.61	1.06	1.03	1.05	2.00	-	-

TABLE (1) : ESTIMATED NUMBER OF HOUSEHOLDS, AREA OWNED AND HOUSEHOLD SIZE BY SIZE CLASS OF HOUSEHOLD OWNERSHIP HOLDING

State : Tripura									
Urban									
number of sample blocks : 48									
number of sample households: 157									
size class of household ownership holding (code)	estimated number of households (00)			estimated area owned (00 hectares)			estimated household size		
	sub-sample 1	sub-sample 2	combined	sub-sample 1	sub-sample 2	combined	sub-sample 1	sub-sample 2	combined
(1)	(2)	(3)	(4)	(5)	(6)	(7)	(8)	(9)	(10)
0	95	1.7	106	-	-	-	3.58	2.98	3.24
1	106	105	105	7	6	6	5.95	5.45	5.73
2	3	9	6	1	3	2	5.00	6.56	6.17
3	6	12	9	3	6	4	8.83	7.75	8.11
4	-	-	-	-	-	-	-	-	-
5	9	9	9	13	12	13	6.56	3.11	4.78
6	-	-	-	-	-	-	-	-	-
7	-	13	2	-	12	6	-	14.33	11.00
8	-	-	-	-	-	-	-	-	-
9	-	-	-	-	-	-	-	-	-
10	-	-	-	-	-	-	-	-	-
11	-	-	-	-	-	-	-	-	-
12	-	-	-	-	-	-	-	-	-
13	-	-	-	-	-	-	-	-	-
14	-	-	-	-	-	-	-	-	-
all sizes	219	255	237	24	39	31	5.01	4.49	4.73

TABLE (2) : PERCENTAGE AND CUMULATIVE PERCENTAGE DISTRIBUTION OF HOUSEHOLDS
AND OF AREA OWNED BY SIZE CLASS OF HOUSEHOLD OWNERSHIP HOLDING

State : Tripura		Urban			
number of sample blocks : 48		number of sample households: 157			
size class of household ownership holding (code)	average area owned by household (hectares)	percentage of		cumulative percentage of	
		percentage	area owned	households	area owned
(1)	(2)	(3)	(4)	(5)	(6)
0	-	44.73	-	44.73	-
1	0.06	44.30	19.35	89.03	19.35
2	0.33	2.53	6.45	91.56	25.80
3	0.44	3.80	12.90	95.35	38.70
4	-	-	-	95.36	38.70
5	1.44	3.80	41.94	99.16	80.64
6	-	-	-	99.16	80.64
7	3.00	0.84	19.36	100.00	100.00
8	-	-	-	100.00	100.00
9	-	-	-	100.00	100.00
10	-	-	-	100.00	100.00
11	-	-	-	100.00	100.00
12	-	-	-	100.00	100.00
13	-	-	-	100.00	100.00
14	-	-	-	100.00	100.00
all sizes		0.13	100.00	100.00	
estimated number of households (00)		x	237	x	
estimated area owned (00 hectares)		x	x	31	
average area owned by land owning households (hectares)		0.24	x	x	

PERCENTAGE OF HOUSEHOLD LEASING OUT LAND UNDER DIFFERENT TERMS TO ALL HOUSEHOLDS OWNING LAND AND PERCENTAGE OF AREA LEASED OUT TO AREA OWNED BY SIZE CLASS OF HOUSEHOLD OWNERSHIP HOLDING

State : Tripura

Urban

number of sample blocks : 48

number of sample households: 157

size class of household ownership holding (code)	estimated number of households (00)	percentage of households leasing out land				estimated area owned (00 hect-ares)	percentage of owned area leased out			
		under usufructuary mortgage	on crop sharing basis	on other terms	under any term		under usufructuary mortgage	on crop sharing basis	on other terms	total
(1)	(2)	(3)	(4)	(5)	(6)	(7)	(8)	(9)	(10)	(11)
1	105	-	-	11.43	11.43	6	-	-	12.50	12.50
2	6	-	-	33.33	33.33	2	-	-	16.67	16.67
3	9	-	44.44	22.22	66.66	4	-	40.00	-	40.00
4	-	-	-	-	-	-	-	-	-	-
5	9	22.22	55.56	33.33	100.00	13	0.00	19.35	19.35	38.70
6	-	-	-	-	-	-	-	-	-	-
7	2	-	-	-	-	6	-	-	-	-
8	-	-	-	-	-	-	-	-	-	-
9	-	-	-	-	-	-	-	-	-	-
10	-	-	-	-	-	-	-	-	-	-
11	-	-	-	-	-	-	-	-	-	-
12	-	-	-	-	-	-	-	-	-	-
13	-	-	-	-	-	-	-	-	-	-
14	-	-	-	-	-	-	-	-	-	-
all sizes	131	1.53	6.11	14.50	22.14	31	0.00	12.99	11.69	24.68

(4)

PERCENTAGE OF HOUSEHOLDS LEASING IN LAND UNDER DIFFERENT TERMS TO ALL HOUSEHOLDS OWNING LAND AND PERCENTAGE OF AREA LEASED IN TO AREA OWNED BY SIZE CLASS OF HOUSEHOLD OWNERSHIP HOLDING

State : Tripura

Urban

number of sample blocks : 48

number of sample households : 157

size class of household (000)	estimated number of households (00)	percentage of households leasing in land							estimated area owned (00 hect-ares)	percentage of area leased in				
		for fixed money	for fixed pro-duce	for share of pro-duce	under usufruc-tuary mortgage	on other terms	under any term	for fixed money		for fixed pro-duce	for share of pro-duce	under usufruc-tuary mortgage	on other terms	total
(1)	(2)	(3)	(4)	(5)	(6)	(7)	(8)	(9)	(10)	(11)	(12)	(13)	(14)	(15)
*	106	18.67	-	-	-	28.30	47.17	-	1	-	-	-	9	10
1	105	7.62	-	2.86	-	1.90	11.43	6	0.00	-	50.00	-	0.00	50.00
2	76	33.33	-	66.67	-	-	100.00	2	0.00	-	133.33	-	-	133.00
3	9	22.22	-	-	-	-	22.22	4	0.00	-	-	-	-	0.00
4	-	-	-	-	-	-	-	-	-	-	-	-	-	-
5	9	-	-	22.22	-	-	22.22	13	-	-	0.00	-	-	0.00
6	-	-	-	-	-	-	-	-	-	-	-	-	-	-
7	2	-	-	-	-	-	-	6	-	-	-	-	-	-
8	-	-	-	-	-	-	-	-	-	-	-	-	-	-
9	-	-	-	-	-	-	-	-	-	-	-	-	-	-
10	-	-	-	-	-	-	-	-	-	-	-	-	-	-
11	-	-	-	-	-	-	-	-	-	-	-	-	-	-
12	-	-	-	-	-	-	-	-	-	-	-	-	-	-
13	-	-	-	-	-	-	-	-	-	-	-	-	-	-
14	-	-	-	-	-	-	-	-	-	-	-	-	-	-
all sizes	237	13.50	-	3.80	-	13.50	30.38	31	3.23	-	19.35	-	12.90	35.48

*For the size class '0' (under landless) actual area has been recorded in col.10-15 instead of percentage.

SIZE BY SIZE CLASS OF HOUSEHOLD OPERATIONAL HOLDING

State : Tripura

Urban

number of sample blocks : 48

number of sample households:157

size class of household operational holding (code)	estimated number of households (00)			estimated area operated (00 hectares)			estimated household size		
	sub- sample 1	sub- sample 2	combined	sub- sample 1	sub- sample 2	combined	sub- sample 1	sub- sample 2	combined
(1)	(2)	(3)	(4)	(5)	(6)	(7)	(8)	(9)	(10)
0	153	172	170	x	x	x	4.62	4.17	4.40
0.1	68	71	69	x	x	x	x	x	x
0.2	95	107	101	x	x	x	x	x	x
1	38	46	42	4	3	3	5.68	5.04	5.33
2	-	6	3	-	2	1	-	5.67	5.67
3	42	3	8	6	1	4	8.17	6.33	7.25
4	-	-	-	-	-	-	-	-	-
5	6	19	12	7	26	17	5.00	3.89	4.33
6	-	-	-	-	-	-	-	-	-
7	-	3	2	-	12	6	-	14.33	11.00
8	-	-	-	-	-	-	-	-	-
9	-	-	-	-	-	-	-	-	-
10	-	-	-	-	-	-	-	-	-
11	-	-	-	-	-	-	-	-	-
12	-	-	-	-	-	-	-	-	-
13	-	-	-	-	-	-	-	-	-
14	-	-	-	-	-	-	-	-	-
all sizes	219	255	237	17	44	31	5.01	4.49	4.83

TABLE (6) : PERCENTAGE AND CUMULATIVE PERCENTAGE DISTRIBUTION OF HOUSEHOLDS AND OF AREA OPERATED BY SIZE CLASS OF HOUSEHOLD OPERATIONAL HOLDING

State : Tripura

Urban

number of sample blocks : 48

number of sample households: 157

size class of household operational holding (code)	average area operated by household (hectares)	percentage of		cumulative percentage of	
		households	area operated	households	area operated
(1)	(2)	(3)	(4)	(5)	(6)
0	-	71.73	-	71.73	-
1	0.07	17.72	9.68	89.45	9.68
2	0.33	1.27	3.23	92.72	12.91
3	0.50	3.38	12.90	94.10	25.81
4	-	-	-	94.10	25.81
5	1.33	5.06	54.84	99.16	80.65
6	-	-	-	99.16	80.65
7	3.00	0.84	19.35	100.00	100.00
8	-	-	-	100.00	100.00
9	-	-	-	100.00	100.00
10	-	-	-	100.00	100.00
11	-	-	-	100.00	100.00
12	-	-	-	100.00	100.00
13	-	-	-	100.00	100.00
14	-	-	-	100.00	100.00
all sizes	0.13	100.00	100.00		
estimated number of household(00) x		237	x		
estimated area operated (00 hectares) x		x	31		
average area operated by land operating households	0.46	x	x		

HOUSEHOLDS BY SIZE CLASS OF HOUSEHOLD OPERATIONAL HOLDING

State : Tripura

Urban

number of sample blocks : 48

number of sample households : 157

size class of household operational holding (code)	number (0.00) of cattle owned per 100 households						young stock	total
	males over 3 years			females over 3 years				
	working	others	sub-total	in milk	others	sub-total		
(1)	(2)	(3)	(4)	(5)	(6)	(7)	(8)	(9)
	-	-	-	2.94	2.35	5.33	1.76	7.05
1	-	-	-	9.52	28.57	38.09	21.43	59.52
2	-	-	-	-	-	-	-	-
3	37.50	25.00	62.50	175.00	150.00	325.00	100.00	487.50
4	-	-	-	-	-	-	-	-
5	133.33	-	133.33	33.33	66.67	100.00	50.00	283.33
6	-	-	-	-	-	-	-	-
7	300.00	-	300.00	-	-	-	-	300.00
8	-	-	-	-	-	-	-	-
9	-	-	-	-	-	-	-	-
10	-	-	-	-	-	-	-	-
11	-	-	-	-	-	-	-	-
12	-	-	-	-	-	-	-	-
13	-	-	-	-	-	-	-	-
14	-	-	-	-	-	-	-	-
all sizes	10.55	0.84	11.39	11.39	15.19	26.58	10.97	48.94

TABLE (7) CONTD. : ESTIMATED NUMBER OF OWNED CATTLE AND OWNED BUFFALOES PER 100 HOUSEHOLDS BY SIZE CLASS OF HOUSEHOLD OPERATIONAL HOLDING

State : Tripura

Urban

number of sample blocks : 48

number of sample households : 157

size class of household operational holding (code)	number (0.00) of buffaloes owned per 100 households						young stock	total	number of cattle and buffaloes per 100 households (0.00)
	males over 3 years			females over 3 years					
	working	others	sub-total	in milk	others	sub-total			
(1)	(10)	(11)	(12)	(13)	(14)	(15)	(16)	(17)	(18)
0	-	-	-	-	-	-	-	-	7.05
1	-	-	-	-	-	-	-	-	59.52
2	-	-	-	-	-	-	-	-	-
3	-	-	-	-	-	-	-	-	487.50
4	-	-	-	-	-	-	-	-	-
5	16.67	-	16.67	-	-	-	-	16.67	300.00
6	-	-	-	-	-	-	-	-	-
7	150.00	-	150.00	-	-	-	-	150.00	450.00
8	-	-	-	-	-	-	-	-	-
9	-	-	-	-	-	-	-	-	-
10	-	-	-	-	-	-	-	-	-
11	-	-	-	-	-	-	-	-	-
12	-	-	-	-	-	-	-	-	-
13	-	-	-	-	-	-	-	-	-
14	-	-	-	-	-	-	-	-	-
all sizes	2.11	-	2.11	-	-	-	-	2.11	51.05

TABLE (8) : ESTIMATED NUMBER OF OWNED CATTLE AND OWNED BUFFALOES PER 100 HECT
OF OPERATED AREA BY SIZE CLASS OF HOUSEHOLD OPERATIONAL HOLDING

State : Tripura

Urban

number of sample blocks : 48

number of sample households: 157

size class of household operational holding (code)	number (0.00) of cattle owned per 100 hectares of operated area						young stock	total
	males over 3 years			females over 3 years				
	working	others	sub-total	in milk	others	sub-total		
(1)	(2)	(3)	(4)	(5)	(6)	(7)	(8)	(9)
0*	-	-	-	5	4	9	3	12
1	-	-	-	133.33	400.00	533.33	300.00	833.33
2	-	-	-	-	-	-	-	-
3	75.00	50.00	125.00	350.00	300.00	650.00	200.00	975.00
4	-	-	-	-	-	-	-	-
5	94.12	-	94.12	23.53	47.06	70.59	35.29	200.00
6	-	-	-	-	-	-	-	-
7	100.00	-	100.00	-	-	-	-	100.00
8	-	-	-	-	-	-	-	-
9	-	-	-	-	-	-	-	-
10	-	-	-	-	-	-	-	-
11	-	-	-	-	-	-	-	-
12	-	-	-	-	-	-	-	-
13	-	-	-	-	-	-	-	-
14	-	-	-	-	-	-	-	-
all sizes	80.65	6.45	87.10	87.10	116.13	203.23	83.87	374.20

* For size class '0' (operating no land) actual number of cattle/buffaloes has been recorded in columns 2 to 9 instead of number per 100 hectares of operated area.

INTD. : ESTIMATED NUMBER OF OWNED CATTLE AND OWNED BUFFALOES PER 100 HECTARES OF OPERATED AREA BY SIZE CLASS OF HOUSEHOLD OPERATIONAL HOLDING

State : Tripura

Urban

Number of sample blocks : 48

Number of sample households : 157

size class of household operational holding (code)	number (0.00) of buffaloes owned per 100 hectares of operated area						young stock	total	number of cattle and buffaloes owned per 100 hectares of operated area
	males over 3 years			females over 3 years					
	working	others	sub-total	in milk	others	sub-total			
(1)	(10)	(11)	(12)	(13)	(14)	(15)	(16)	(17)	(18)
0*	-	-	-	-	-	-	-	-	12
1	-	-	-	-	-	-	-	-	833.33
2	-	-	-	-	-	-	-	-	-
3	-	-	-	-	-	-	-	-	975.00
4	-	-	-	-	-	-	-	-	-
5	11.76	-	11.76	-	-	-	-	11.76	211.76
6	-	-	-	-	-	-	-	-	-
7	50.00	-	50.00	-	-	-	-	50.00	150.00
8	-	-	-	-	-	-	-	-	-
9	-	-	-	-	-	-	-	-	-
10	-	-	-	-	-	-	-	-	-
11	-	-	-	-	-	-	-	-	-
12	-	-	-	-	-	-	-	-	-
13	-	-	-	-	-	-	-	-	-
14	-	-	-	-	-	-	-	-	-
all sizes	16.13	-	16.13	-	-	-	-	16.13	390.33

* For the size class operating no land, actual number of cattle/buffaloes has been recorded in columns 10-18 instead of number per 100 hectares of operated area.

TABLE (9) : PERCENTAGE OF HOUSEHOLDS NOT HAVING WORKING CATTLE AND BUFFALOES
BY SIZE CLASS OF HOUSEHOLD OPERATIONAL HOLDING

State : Tripura

Urban

number of sample blocks : 48

number of sample households : 157

size class of household operational holding (code)	number of households (00)	percentage of households - not having working animals		percentage of households not having any working cattle or buffaloes
		cattle	buffaloes	
(1)	(2)	(3)	(4)	(5)
0	170	100.00	100.00	100.00
1	42	100.00	100.00	100.00
2	3	100.00	100.00	100.00
3	8	25.00	100.00	25.00
4	-	-	-	-
5	12	33.33	50.00	16.67
6	-	-	-	-
7	2	-	-	-
8	-	-	-	-
9	-	-	-	-
10	-	-	-	-
11	-	-	-	-
12	-	-	-	-
13	-	-	-	-
14	-	-	-	-
all sizes	237	93.24	96.62	92.40

TABLE (10) : ESTIMATED NUMBER OF LIVESTOCK (OTHER THAN CATTLE AND BUFFALOES) AND POULTRY OWNED PER 100 HOUSEHOLDS BY SIZE CLASS OF HOUSEHOLD OPERATIONAL HOLDING

State : Tripura

Urban

number of sample blocks : 48

number of sample households: 157

size class of households operational holding (code)	number (0.00) per 100 households								
	sheep	goats	horses & ponies	mules	donkeys	camel.	other draught animals	pigs	poultry
(1)	(2)	(3)	(4)	(5)	(6)	(7)	(8)	(9)	(10)
0	-	5.88	-	-	-	-	-	-	12.94
1	-	30.95	-	-	-	-	-	-	47.62
2	-	-	-	-	-	-	-	-	-
3	-	-	-	-	-	-	-	-	75.00
4	-	-	-	-	-	-	-	-	-
5	-	16.67	-	-	-	-	-	-	458.33
6	-	-	-	-	-	-	-	-	-
7	-	450.00	100.00	-	-	-	-	-	1150.00
8	-	-	-	-	-	-	-	-	-
9	-	-	-	-	-	-	-	-	-
10	-	-	-	-	-	-	-	-	-
11	-	-	-	-	-	-	-	-	-
12	-	-	-	-	-	-	-	-	-
13	-	-	-	-	-	-	-	-	-
14	-	-	-	-	-	-	-	-	-
all sizes	-	14.35	0.84	-	-	-	-	-	53.16

TABLE (11) : ESTIMATED NUMBER OF AGRICULTURAL MACHINERY OWNED PER 100 HOUSEHOLD BY SIZE CLASS OF HOUSEHOLD OPERATIONAL HOLDING

State : Tripura

Urban

number of sample blocks : 48

number of sample households: 157

size class of household operational holding (code)	number (0.00) of agriculture machinery owned per 100 households										
	ploughs wooden	ploughs iron	harrowes	seed drills	sprayers	dusters	tractors				
							less than 10 h.p.	10-14 h.p.	15-19 h.p.	20 h.p. & above	h.p. not available
(1)	(2)	(3)	(4)	(5)	(6)	(7)	(8)	(9)	(10)	(11)	(12)
0	-	-	-	-	-	-	-	-	-	-	-
1	-	-	-	-	-	-	-	-	-	-	-
2	-	-	-	-	-	-	-	-	-	-	-
3	25.00	-	-	-	-	-	-	-	-	-	-
4	-	-	-	-	-	-	-	-	-	-	-
5	83.33	-	50.00	-	-	25.00	-	-	-	-	-
6	-	-	-	-	-	-	-	-	-	-	-
7	200.00	-	200.00	-	100.00	200.00	-	-	-	-	-
8	-	-	-	-	-	-	-	-	-	-	-
9	-	-	-	-	-	-	-	-	-	-	-
10	-	-	-	-	-	-	-	-	-	-	-
11	-	-	-	-	-	-	-	-	-	-	-
12	-	-	-	-	-	-	-	-	-	-	-
13	-	-	-	-	-	-	-	-	-	-	-
14	-	-	-	-	-	-	-	-	-	-	-
all sizes	6.75	-	4.22	-	0.84	2.95	-	-	-	-	-

TABLE (11) CONTD. : ESTIMATED NUMBER OF AGRICULTURAL MACHINERY OWNED PER 100 HOUSEHOLDS BY SIZE CLASS OF HOUSEHOLD OPERATIONAL HOLDING

State : *Assam*

Urban

number of sample blocks : 48

number of sample households: 157

size class of household operational holding (code)	number (0.00) of agricultural machinery owned per 100 households						
	threshers	pumps			cane crushers	oil crushers	others
		electric	diesel	other			
(1)	(13)	(14)	(15)	(16)	(17)	(18)	(19)
0	-	-	-	-	-	-	-
1	-	-	-	-	-	-	-
2	-	-	-	-	-	-	-
3	-	-	-	-	-	-	-
4	-	-	-	-	-	-	-
5	-	-	-	-	-	-	-
6	-	-	-	-	-	-	-
7	-	-	-	-	-	-	-
8	-	-	-	-	-	-	-
9	-	-	-	-	-	-	-
10	-	-	-	-	-	-	-
11	-	-	-	-	-	-	-
12	-	-	-	-	-	-	-
13	-	-	-	-	-	-	-
14	-	-	-	-	-	-	-
all sizes	-	-	-	-	-	-	-

TABLE (12) : ESTIMATED NUMBER OF AGRICULTURAL MACHINERY PER 100 HECTARES OF OPERATED AREA AND AREA OPERATED PER TRACTOR BY SIZE CLASS OF HOUSEHOLD OPERATIONAL HOLDING

State : ~~Assam~~ TRIPURA.

Urban

number of sample blocks : 48

number of sample households: 157

size class of household operational holding (code)	estimated number (0.00) of agricultural machinery per 100 hectares of operated area				estimated area operated per tractor (0.00) hectares					all
	ploughs wooden	ploughs iron	harrows	seed drills	less than 10 h.p.	10-14 h.p.	15-19 h.p.	20 h.p. & above	h.p. not available	
(1)	(2)	(3)	(4)	(5)	(6)	(7)	(8)	(9)	(10)	(11)
1	-	-	-	-	-	-	-	-	-	-
2	-	-	-	-	-	-	-	-	-	-
3	50.00	-	-	-	-	-	-	-	-	-
4	-	-	-	-	-	-	-	-	-	-
5	58.82	-	35.29	-	-	-	-	-	-	-
6	-	-	-	-	-	-	-	-	-	-
7	66.67	-	66.67	-	-	-	-	-	-	-
8	-	-	-	-	-	-	-	-	-	-
9	-	-	-	-	-	-	-	-	-	-
10	-	-	-	-	-	-	-	-	-	-
11	-	-	-	-	-	-	-	-	-	-
12	-	-	-	-	-	-	-	-	-	-
13	-	-	-	-	-	-	-	-	-	-
14	-	-	-	-	-	-	-	-	-	-
all sizes	51.61	-	32.25	-	-	-	-	-	-	-

TABLE (13) : PERCENTAGE OF HOUSEHOLDS REPORTING PUMPS AND PLOUGHS
BY SIZE CLASS OF HOUSEHOLD OPERATIONAL HOLDING

State : Tripura

Urban

number of sample blocks : 48

number of sample households: 157

size class of household operational holding (order)	number of households (00)	percentage		of households reporting			
		ploughs		neither wooden nor iron plough	electric	pumps diesel	other
		wooden	iron				
(1)	(2)	(3)	(4)	(5)	(6)	(7)	(8)
0	170	-	-	100.00	-	-	-
1	42	-	-	100.00	-	-	-
2	3	-	-	100.00	-	-	-
3	8	25.00	-	75.00	-	-	-
4	-	-	-	-	-	-	-
5	12	75.00	-	25.00	-	-	-
6	-	-	-	-	-	-	-
7	2	100.00	-	-	-	-	-
8	-	-	-	-	-	-	-
9	-	-	-	-	-	-	-
10	-	-	-	-	-	-	-
11	-	-	-	-	-	-	-
12	-	-	-	-	-	-	-
13	-	-	-	-	-	-	-
14	-	-	-	-	-	-	-
all sizes	237	5.49	-	94.51	-	-	-

TABLE (14) PERCENTAGE SHARES OF VALUE OF DIFFERENT NON-FARM BUSINESS EQUIPMENTS OWNED TO TOTAL VALUE BY SIZE CLASS OF HOUSEHOLD OPERATIONAL HOLDINGS

State : Tripura

Rural URBAN

number of sample blocks : 48

number of sample households : 157

size class of household operational holding (code)	estimated value of non-farm equipments owned (Rs.00)	percentage share of values		
		plant and machinery	furniture and fixtures	tools and other equipments
(1)	(2)	(3)	(4)	(5)
0	14132	0.05	84.35	15.60
1	14460	-	87.19	12.81
2	788	39.21	60.79	-
3	3404	-	97.83	2.17
4	-	-	-	-
5	125	-	37.60	62.40
6	-	-	-	-
7	278	-	55.40	44.60
8	-	-	-	-
9	-	-	-	-
10	-	-	-	-
11	-	-	-	-
12	-	-	-	-
13	-	-	-	-
14	-	-	-	-
all sizes	35188	0.90	86.06	13.04

Note This table is different as compared to table 14 for rural sector, value of non-farm equipments and percentage share of values are indicated instead of number of non-farm business equipments per 100 households

TABLE (15) : ESTIMATED NUMBER OF TRANSPORT EQUIPMENTS OWNED PER 100 HOUSEHOLDS BY SIZE CLASS OF HOUSEHOLD OPERATIONAL HOLDING

State : Tripura

Urban

number of sample blocks : 48

number of sample households: 157

size class of household operational holding (code)	number (0.00) of transport equipments owned per 100 households									
	boats	motor cars	carts	bicycles	motor cycles/scooters	trucks	trailers	passenger buses	animal driven	others
(1)	(2)	(3)	(4)	(5)	(6)	(7)	(8)	(9)	(10)	(11)
0	-	-	-	8.24	-	-	-	-	-	8.82
1	-	-	-	9.52	-	4.76	-	-	-	7.14
2	-	-	-	-	-	-	-	-	-	-
3	-	-	-	37.50	-	-	-	-	-	-
4	-	-	-	-	-	-	-	-	-	-
5	-	-	-	-	-	-	-	-	-	16.67
6	-	-	-	-	-	-	-	-	-	-
7	-	-	-	-	-	-	-	-	-	-
8	-	-	-	-	-	-	-	-	-	-
9	-	-	-	-	-	-	-	-	-	-
10	-	-	-	-	-	-	-	-	-	-
11	-	-	-	-	-	-	-	-	-	-
12	-	-	-	-	-	-	-	-	-	-
13	-	-	-	-	-	-	-	-	-	-
14	-	-	-	-	-	-	-	-	-	-
all sizes	-	-	-	8.86	-	0.84	-	-	-	8.44

TABLE (16) : PERCENTAGE OF SHARES OF VALUE OF OWNED (i) CATTLE (ii) BUFFALOES (iii) OTHER LIVESTOCK (iv) AGRICULTURAL MACHINERY (v) NON-FARM BUSINESS EQUIPMENTS (vi) TRANSPORT EQUIPMENT IN THE TOTAL VALUE OF ALL THE SIX ASSET GROUP BY SIZE CLASS OF HOUSEHOLD OPERATIONAL HOLDING

State : Tripura

Urban

number of sample blocks : 48

number of sample households: 157

size class of household operational holding (code)	total value of six asset groups (Rs.00)	value of asset per 100 households (Rs.00)	value of assets per 100 hectares of operated area (Rs.00)	percentage shares of value of owned					
				cattle	buffalo	other live-stock	agricultural machinery	non-farm business equipments	transport equipments
(1)	(2)	(3)	(4)	(5)	(6)	(7)	(8)	(9)	(10)
0	38305	23415	39805*	2.51	-	0.63	-	35.50	61.36
1	59411	141455	198037	4.85	-	0.55	-	27.70	66.90
2	788	26267	70800	-	-	-	-	100.00	-
3	8596	107325	214650	54.05	-	0.26	0.44	39.65	5.60
4	-	-	-	-	-	-	-	-	-
5	4035	33625	23735	76.90	9.57	4.66	5.70	3.12	0.05
6	-	-	-	-	-	-	-	-	-
7	2317	115850	38617	40.01	15.66	20.33	11.00	12.00	-
8	-	-	-	-	-	-	-	-	-
9	-	-	-	-	-	-	-	-	-
10	-	-	-	-	-	-	-	-	-
11	-	-	-	-	-	-	-	-	-
12	-	-	-	-	-	-	-	-	-
13	-	-	-	-	-	-	-	-	-
14	-	-	-	-	-	-	-	-	-
all sizes	114942	48499	370781	1092	0.67	1.09	0.46	30.61	56.25

* for the size class '0' actual value of asset (Rs.00) is recorded in column 4 instead of value of asset per hectares of operated area.

TABLE (17) : ESTIMATED NUMBER OF OPERATIONAL HOLDINGS AND AREA OPERATED BY
SIZE CLASS OF OPERATIONAL HOLDING

Tripura

Urban

of sample blocks : 48

number of sample households: 157

size class of operational holding (code)	estimated number of operational holdings (00)			estimated area operated (00 hectares)		
	sub-sample 1	sub-sample 2	combined	sub-sample 1	sub-sample 2	combined
(1)	(2)	(3)	(4)	(5)	(6)	(7)
1	38	46	42	4	3	3
2	-	6	3	-	2	1
3	12	3	8	6	1	4
4	-	-	-	-	-	-
5	6	19	12	7	26	17
6	-	-	-	-	-	-
7	-	3	2	-	12	6
8	-	-	-	-	-	-
9	-	-	-	-	-	-
10	-	-	-	-	-	-
11	-	-	-	-	-	-
12	-	-	-	-	-	-
13	-	-	-	-	-	-
14	-	-	-	-	-	-
all sizes	56	77	67	17	44	31

TABLE (18) : PERCENTAGE AND CUMULATIVE PERCENTAGE DISTRIBUTION OF OPERATIONAL HOLDINGS AND AREA OPERATED BY SIZE CLASS OF OPERATIONAL HOLDING

State : Tripura

Urban

number of sample blocks : 48

number of sample households: 157

size class of operational holding (code)	average area of an operational holding (hectares)	percentage of		cumulative percentage of	
		operational holdings	area operated	operational holdings	area operated
(1)	(2)	(3)	(4)	(5)	(6)
1	0.07	62.50	9.69	62.59	9.68
2	0.33	4.40	3.23	67.17	12.91
3	0.50	11.91	12.90	79.11	25.81
4	-	-	-	79.11	25.81
5	1.42	17.91	54.84	97.02	80.65
6	-	-	-	97.02	80.65
7	4.00	2.98	19.35	100.00	100.00
8	-	-	-	100.00	100.00
9	-	-	-	100.00	100.00
10	-	-	-	100.00	100.00
11	-	-	-	100.00	100.00
12	-	-	-	100.00	100.00
13	-	-	-	100.00	100.00
14	-	-	-	100.00	100.00
all sizes	0.46	100.00	100.00		
estimated number of operational holdings (00)	x	67	x		
estimated area operated (00 hectares)	x	x	31		

TABLE (19) : PERCENTAGE OF HOLDINGS REPORTING OWNED AREAS AND THOSE REPORTING LEASED IN AREA AND PERCENTAGE OF OPERATED AREA OWNED AND LEASED IN UNDER DIFFERENT TERMS OF LEASING IN BY SIZE CLASS OF OPERATIONAL HOLDING

State : Tripura

Urban

number of sample blocks : 43

number of sample households: 157

size class of operational holding (code)	estimated number of holdings (00)	percentage of holding reporting leased in area						
		area owned	for fixed money	for fixed produce	for share of produce	under usufructuary mortgage	other terms	under any term
(1)	(2)	(3)	(4)	(5)	(6)	(7)	(8)	(9)
1	42	90.48	9.52	-	-	-	4.76	14.28
2	3	100.00	-	-	-	-	-	-
3	8	87.50	25.00	-	-	-	-	25.00
4	-	-	-	-	-	-	-	-
5	12	83.33	-	-	66.67	-	25.00	91.67
6	-	-	-	-	-	-	-	-
7	2	100.00	-	-	-	-	-	-
8	-	-	-	-	-	-	-	-
9	-	-	-	-	-	-	-	-
10	-	-	-	-	-	-	-	-
11	-	-	-	-	-	-	-	-
12	-	-	-	-	-	-	-	-
13	-	-	-	-	-	-	-	-
14	-	-	-	-	-	-	-	-
all sizes	67	89.55	8.96	-	11.94	-	7.46	28.36

TABLE (19) CONTD. : PERCENTAGE OF HOLDINGS REPORTING OWNED AREAS AND THOSE REPORTING LEASED IN AREAS AND PERCENTAGE OF OPERATED AREA OWNED AND LEASED IN UNDER DIFFERENT TERMS OF LEASING IN BY SIZE CLASS OF OPERATIONAL HOLDING

State : Tripura

Urban

number of sample blocks : 43

number of sample households: 157

size class of operational holding (acres)	estimated area operated (00 hectares)	owned	percentage of operated area leased in					total
			for fixed money	for fixed produce	for share of produce	under usufructuary mortgage	other terms	
(1)	(10)	(11)	(12)	(13)	(14)	(15)	(16)	(17)
1	3	100.00	0.00	-	-	-	0.00	0.00
	1	100.00	-	-	-	-	-	-
3	4	100.00	0.00	-	-	-	-	0.00
4	-	-	-	-	-	-	-	-
5	17	47.06	-	-	41.18	-	11.76	52.94
6	-	-	-	-	-	-	-	-
7	6	100.00	-	-	-	-	-	-
8	-	-	-	-	-	-	-	-
9	-	-	-	-	-	-	-	-
10	-	-	-	-	-	-	-	-
11	-	-	-	-	-	-	-	-
12	-	-	-	-	-	-	-	-
13	-	-	-	-	-	-	-	-
14	-	-	-	-	-	-	-	-
all sizes	31	70.67	-	-	22.58	-	6.45	29.03

TABLE (20) : PERCENTAGE OF INDIVIDUAL AND JOINT OPERATIONAL HOLDINGS AND THEIR PERCENTAGE SHARES OF AREA FOR EACH SIZE CLASS OF OPERATIONAL HOLDING

State : Tripura

Urban

number of sample blocks : 48

number of sample households: 157

size class of operational holding (code)	number of operational holdings (00)	percentage of holdings		area operated (00 hectares)	percentage of area operated	
		individual	joint		individually	jointly
(1)	(2)	(3)	(4)	(5)	(6)	(7)
1	42	100.00	-	3	100.00	-
2	3	100.00	-	1	100.00	-
3	8	100.00	-	4	100.00	-
4	-	-	-	-	-	-
5	12	100.00	-	17	100.00	-
6	-	-	-	-	-	-
7	2	100.00	-	6	100.00	-
8	-	-	-	-	-	-
9	-	-	-	-	-	-
10	-	-	-	-	-	-
11	-	-	-	-	-	-
12	-	-	-	-	-	-
13	-	-	-	-	-	-
14	-	-	-	-	-	-
all sizes	67	100.00	-	31	100.00	-

TABLE (21) : AVERAGE NUMBER OF ATTACHED FARM WORKERS PER OPERATIONAL HOLDING (REPORTING)
FOR DIFFERENT MAJOR AGRICULTURAL SEASONS BY SIZE CLASS OF OPERATIONAL HOLDING

State : Tripura

Urban

number of sample blocks : 48

number of sample households: 157

size class of operational holding (code)	number of holdings (00)	percentage of holdings report- ing attached farm workers.	average number of farm workers per reporting holding during major crop season	average number of farm workers per reporting holding during major crop season				
				autumn	winter	spring	summer	perennial
(1)	(2)	(3)	(4)	(5)	(6)	(7)	(8)	(9)
1	42	-	-	-	-	-	-	-
2	3	-	-	-	-	-	-	-
3	0	-	-	-	-	-	-	-
4	-	-	-	-	-	-	-	-
5	12	-	-	-	-	-	-	-
6	-	-	-	-	-	-	-	-
7	2	-	-	-	-	-	-	-
8	-	-	-	-	-	-	-	-
9	-	-	-	-	-	-	-	-
10	-	-	-	-	-	-	-	-
11	-	-	-	-	-	-	-	-
12	-	-	-	-	-	-	-	-
13	-	-	-	-	-	-	-	-
14	-	-	-	-	-	-	-	-
all sizes	67	-	-	-	-	-	-	-

TABLE (1) : ESTIMATED NUMBER OF HOUSEHOLDS, AREA OWNED AND HOUSEHOLD SIZE BY SIZE CLASS OF HOUSEHOLD OWNERSHIP HOLDING

State : Tripura

Rural

number of sample villages : 96

number of sample households : 739

size class of household ownership holding (code)	estimated number of households (00)			estimated area owned (00 hectares)			estimated household size		
	sub- sample 1	sub- sample 2	combined	sub- sample 1	sub- sample 2	combined	sub- sample 1	sub- sample 2	combined
(1)	(2)	(3)	(4)	(5)	(6)	(7)	(8)	(9)	(10)
0	141	266	204	-	-	-	3.63	3.60	3.60
1	367	250	308	33	20	27	4.75	3.98	4.45
2	204	193	198	60	57	59	4.66	4.63	4.66
3	125	117	121	57	54	56	5.74	4.53	5.16
4	363	418	391	266	328	297	5.24	6.06	5.69
5	380	384	382	545	534	540	6.01	6.26	6.14
6	112	156	134	279	376	327	7.34	7.69	7.54
7	24	16	20	80	55	67	9.12	12.25	10.40
8	10	20	15	43	86	65	11.40	9.80	10.33
9	10	12	11	50	64	57	9.50	11.67	10.73
10	-	4	2	-	26	13	-	6.00	6.00
11	-	-	-	-	-	-	-	-	-
12	5	4	4	56	41	48	4.90	10.00	8.00
13	-	-	-	-	-	-	-	-	-
14	-	-	-	-	-	-	-	-	-
all sizes	1741	1840	1790	1470	1641	1556	5.39	5.50	5.45

TABLE (2) : PERCENTAGE AND CUMULATIVE PERCENTAGE DISTRIBUTION OF HOUSEHOLDS AND OF AREA OWNED BY SIZE CLASS OF HOUSEHOLD OWNERSHIP HOLDING

State : Tripura

Rural

number of sample villages : 95

number of sample households: 739

size class of household ownership holding (code)	average area owned by household (hectares)	percentage of		cumulative percentage of	
		households	area owned	households	area owned
(1)	(2)	(3)	(4)	(5)	(6)
0	-	11.40	-	11.40	-
1	0.09	17.21	1.74	28.61	1.74
2	0.30	11.06	3.79	39.67	5.53
3	0.46	6.76	3.60	46.43	9.13
4	0.70	21.64	19.09	68.27	28.22
5	1.41	21.34	34.70	89.61	62.92
6	2.44	7.49	21.02	97.10	83.94
7	3.35	1.12	4.30	98.22	88.24
8	4.33	0.84	4.18	99.06	92.42
9	5.18	0.61	3.66	99.67	96.08
10	6.50	0.11	0.84	99.78	96.92
11	-	-	-	99.78	96.92
12	12.07	0.22	3.08	100.00	100.00
13	-	-	-	100.00	100.00
14	-	-	-	100.00	100.00
all sizes	0.87	100.00	100.00		
estimated number of households(00)	x	1790	x		
estimated area owned(00 hectares)	x	x	1556		
average area owned by land owning households (hectares)	0.98	x	x		

TABLE (3) : PERCENTAGE OF HOUSEHOLDS LEASING OUT LAND UNDER DIFFERENT TERMS TO ALL HOUSEHOLDS OWNING LAND AND PERCENTAGE OF AREA LEASED OUT TO AREA OWNED BY SIZE CLASS OF HOUSEHOLD OWNERSHIP HOLDING

State : Tripura

Rural

Number of sample villages : 96

number of sample households : 739

size class of household ownership holding (code)	estimated number of households (00)	percentage of households leasing out land				estimated area owned (00 hect res)	percentage of owned area leased out			
		under usu-fructuary mortgage	on crop sharing basis	on other terms	under any term		under usu-fructuary mortgage	on crop sharing basis	on other terms	total
(1)	(2)	(3)	(4)	(5)	(6)	(7)	(8)	(9)	(10)	(11)
1	303	1.62	1.95	0.97	4.54	27	3.03	3.03	0.00	6.06
2	198	5.56	19.19	7.07	30.83	59	2.76	13.10	3.45	19.31
3	121	4.13	11.57	4.13	19.83	56	1.45	5.07	2.17	8.69
4	391	13.30	17.90	5.63	32.83	297	4.23	9.55	1.23	15.01
5	382	13.09	14.92	6.01	31.94	540	3.37	8.54	1.65	13.56
6	134	13.43	26.86	10.45	41.79	327	1.61	11.37	1.24	14.22
7	20	20.00	25.00	10.00	30.00	67	1.20	0.60	-	1.80
8	15	13.33	20.00	13.33	46.67	65	5.63	3.12	8.12	16.87
9	11	36.36	18.18	18.18	63.64	57	6.43	4.28	0.71	11.42
10	2	-	-	-	-	13	-	-	-	-
11	-	-	-	-	-	-	-	-	-	-
12	4	-	100.00	-	100.00	48	-	4.17	-	4.17
13	-	-	-	-	-	-	-	-	-	-
14	-	-	-	-	-	-	-	-	-	-
all sizes	1586	9.63	14.82	5.67	27.05	1556	3.04	8.35	1.64	13.03

TABLE (4) : PERCENTAGE OF HOUSEHOLDS LEASING IN LAND UNDER DIFFERENT TERMS TO ALL HOUSEHOLDS OWNING LAND AND PERCENTAGE OF AREA LEASED IN TO AREA OWNED BY SIZE CLASS OF HOUSEHOLD OWNERSHIP HOLDING

Tripatha														
number of sample villages : 96														
Rural														
number of sample households : 739														
size class of household ownership holding (acres)	estimated number of household (00)	percentage of households leasing in land						estimated area owned (00 hectares)	percentage of area leased in					Total
		for fixed money	for fixed produce	for share of produce	under usufructuary mortgage	on other terms	under any term		for fixed money	for fixed produce	for share of produce	under usufructuary mortgage	on other terms	
(1)	(2)	(3)	(4)	(5)	(6)	(7)	(8)	(9)	(10)	(11)	(12)	(13)	(14)	(15)
	204	0.49	2.94	13.24	0.98	62.74	65.69	-	0	3	63	1	56	123
1	308	-	0.65	7.79	0.97	9.42	16.56	27	-	12.12	42.42	0.00	9.09	63.53
2	198	2.02	4.04	19.70	-	5.05	28.79	59	1.38	4.14	24.14	-	0.69	30.35
3	121	2.48	2.48	23.14	-	9.09	34.71	56	0.72	3.62	21.01	-	3.62	28.97
4	391	3.32	3.32	20.97	0.77	11.51	33.76	297	2.46	1.64	12.69	0.14	3.55	20.48
5	382	3.93	0.52	16.23	2.88	10.47	32.46	540	1.35	0.37	4.79	0.67	1.35	8.53
6	134	1.49	1.49	11.19	1.49	2.98	17.91	327	0.00	0.12	2.60	0.12	0.25	3.09
7	20	10.00	10.00	-	-	10.00	30.00	67	1.20	1.20	-	-	3.01	5.41
8	15	-	-	-	-	13.33	13.33	65	-	-	-	-	1.25	1.25
9	11	-	-	-	-	-	-	57	-	-	-	-	-	-
10	2	-	-	-	-	-	-	13	-	-	-	-	-	-
11	-	-	-	-	-	-	-	-	-	-	-	-	-	-
12	4	-	-	-	-	-	-	48	-	-	-	-	-	-
13	-	-	-	-	-	-	-	-	-	-	-	-	-	-
14	-	-	-	-	-	-	-	-	-	-	-	-	-	-
all sizes	1790	2.23	2.18	15.47	1.17	15.14	31.96	1556	1.09	1.09	8.58	0.32	3.15	14.33

* For the size class '0' (landless) actual area has been recorded in columns 10 to 15 instead of percentage.

TABLE (5) : ESTIMATED NUMBER OF HOUSEHOLDS, AREA OPERATED AND HOUSEHOLD SIZE BY SIZE CLASS OF HOUSEHOLD OPERATIONAL HOLDING

State : Tripura

Rural

number of sample villages : 96

number of sample households : 739

size class of household operational holding (code)	estimated number of households (00)			estimated area operated (00 hectares)			estimated household size		
	sub-sample 1	sub-sample 2	combined	sub-sample 1	sub-sample 2	combined	sub-sample 1	sub-sample 2	combined
(1)	(2)	(3)	(4)	(5)	(6)	(7)	(8)	(9)	(10)
0	174	333	254	x	x	x	4.10	3.46	3.68
0.1	123	198	161	x	x	x	x	x	x
0.2	51	135	93	x	x	x	x	x	x
1	378	280	329	36	21	28	4.59	3.77	4.24
2	195	151	173	57	46	52	4.52	5.35	4.87
3	147	94	120	67	43	55	5.27	5.22	5.25
4	309	426	367	226	323	274	5.62	5.99	5.84
5	391	370	381	564	523	543	5.94	6.61	6.27
6	109	138	124	260	319	290	7.69	7.70	7.69
7	33	12	22	118	37	78	10.39	14.00	11.64
8	5	24	14	24	105	64	8.60	10.50	10.10
9	-	8	4	-	41	21	-	10.50	10.50
10	-	4	-	-	-	-	-	-	-
11	-	4	2	-	39	19	-	10.00	10.00
12	-	-	-	-	-	-	-	-	-
13	-	-	-	-	-	-	-	-	-
14	-	-	-	-	-	-	-	-	-
all sizes	1741	1900	1790	1352	1497	1424	5.39	5.50	5.45

TABLE (6) : PERCENTAGE AND CUMULATIVE PERCENTAGE DISTRIBUTION OF HOUSEHOLDS AND OF AREA OPERATED BY SIZE CLASS OF HOUSEHOLD OPERATIONAL HOLDING

Tripura

Rural

number of sample villages : 06

number of sample households : 739

class of household operational holding (code)	average area operated by household (hectares)	percentage of		cumulative percentage of	
		households	area operated	households	area operated
(1)	(2)	(3)	(4)	(5)	(6)
0	-	14.20	-	14.20	-
1	0.09	18.39	2.01	32.59	2.01
2	0.30	9.57	2.81	42.25	4.82
3	0.46	6.71	3.90	48.97	8.72
4	0.75	20.51	19.43	69.48	28.15
5	1.43	21.24	38.45	90.72	66.60
6	2.34	6.93	20.52	97.65	87.12
7	3.55	1.23	5.50	98.88	92.62
8	4.57	0.78	4.56	99.66	97.18
9	5.25	0.22	1.45	99.88	98.63
10	-	-	-	99.88	98.63
11	9.50	0.12	1.37	100.00	100.00
12	-	-	-	100.00	100.00
13	-	-	-	100.00	100.00
14	-	-	-	100.00	100.00
all sizes	0.80	100.00	100.00		
estimated number of households (00)	x	1790	x		
estimated area operated (00 hectares)	x	x	1424		
average area operated by land operating households (hectares)	0.93	x	x		

TABLE (7) ESTIMATED NUMBER OF OWNED CATTLE AND OWNED BUFFALOES PER 100 HOUSEHOLDS BY SIZE CLASS OF HOUSEHOLD OPERATIONAL HOLDING

Tripura		Rural							
number of sample villages : 96		number of sample households : 739							
size class of household operational holding (code)	number (0.00) of cattle owned per 100 households								
	males over 3 years			females over 3 years			young stock	total	
	working	others	sub-total	in milk	others	sub-total			
(1)	(2)	(3)	(4)	(5)	(6)	(7)	(8)	(9)	
0	3.15	2.36	5.51	7.48	11.81	19.29	15.75	40.55	
1	10.03	0.61	10.64	19.45	11.55	31.00	27.05	68.69	
2	34.68	3.47	38.15	26.01	25.43	51.44	44.51	134.10	
3	56.67	6.67	73.34	55.00	22.50	77.50	65.83	216.67	
4	118.80	3.82	122.62	47.41	38.69	86.10	71.39	280.11	
5	185.79	12.10	197.89	66.84	52.63	119.47	99.47	416.83	
6	212.10	20.16	232.26	91.13	88.71	179.84	129.84	541.94	
7	272.73	86.36	359.09	90.91	90.91	181.82	159.09	700.00	
8	207.14	14.29	221.43	178.57	64.29	242.86	235.72	700.01	
9	200.00	-	200.00	50.00	250.00	300.00	300.00	800.00	
10	-	-	-	-	-	-	-	-	
11	400.00	-	400.00	200.00	-	200.00	200.00	800.00	
12	-	-	-	-	-	-	-	-	
13	-	-	-	-	-	-	-	-	
14	-	-	-	-	-	-	-	-	
all sizes	94.52	7.16	101.68	43.94	35.22	79.16	65.40	246.24	

TABLE (7) CONTD. : ESTIMATED NUMBER OF OWNED CATTLE AND OWNED BUFFALOES PER 100 HOUSEHOLDS BY SIZE CLASS OF HOUSEHOLD OPERATIONAL HOLDING

State : Tripura

Rural

number of sample villages : 90

number of sample households: 733

size class of household operational holding (Code)	number (0.00) of buffaloes owned per 100 households						young stock	total	number of cattle and buffaloes per 100 households (0.00)
	males over 3 years			females over 3 years					
	working	others	sub-total	in mil	others	sub-total			
(1)	(10)	(11)	(12)	(13)	(14)	(15)	(16)	(17)	(18)
0	-	-	-	-	-	-	-	-	40.55
1	-	-	-	-	-	-	-	-	68.59
2	-	-	-	-	-	-	-	-	134.10
3	-	-	-	-	-	-	-	-	216.57
4	3.81	-	3.81	-	3.81	3.81	6.00	13.62	293.73
5	4.21	-	4.21	1.05	1.05	2.10	1.05	7.36	424.19
6	20.16	4.03	24.19	1.61	1.61	3.22	1.61	29.02	570.95
7	86.36	-	86.36	-	-	-	-	86.36	786.36
8	78.57	-	78.57	-	26.57	26.57	14.29	121.43	821.44
9	100.00	-	100.00	-	-	-	-	100.00	900.00
10	-	-	-	-	-	-	-	-	-
11	-	-	-	-	-	-	-	-	800.00
12	-	-	-	-	-	-	-	-	-
13	-	-	-	-	-	-	-	-	-
14	-	-	-	-	-	-	-	-	-
all sizes	4.97	0.28	5.25	0.34	1.34	1.68	1.68	8.61	254.85

TABLE (8) ; ESTIMATED NUMBER OF OWNED CATTLE AND OWNED BUFFALOES PER 100 HECTARES OF OPERATED AREA BY SIZE CLASS OF HOUSEHOLD OPERATIONAL HOLDING

State : Tripura

Rural

number of sample villages : 96

number of sample households : 739

size class of household operational holding: (code)	number (0.00) of cattle owned per 100 hectares of operated area						young stock	total
	males over 3 years			females over 3 years				
	working	others	sub-total	in milk	others	sub-total		
(1)	(2)	(3)	(4)	(5)	(6)	(7)	(8)	(9)
0*	8	6	14	19	30	49	40	103
1	116.48	7.07	123.55	225.92	134.13	360.05	314.19	797.79
2	151.27	15.12	166.39	113.47	110.95	224.42	194.15	584.97
3	145.34	14.53	159.87	119.92	49.05	168.97	143.57	472.41
4	158.91	5.09	164.00	63.41	51.74	115.15	95.50	374.65
5	130.05	8.48	138.53	46.83	36.82	83.65	69.48	291.66
6	90.76	8.62	99.38	38.99	37.95	76.94	55.57	231.89
7	77.22	24.46	101.68	25.75	25.75	51.50	45.05	198.23
8	45.07	3.11	48.18	38.84	13.99	52.83	51.30	152.31
9	38.77	-	38.77	9.69	48.46	58.15	58.12	155.04
10	-	-	-	-	-	-	-	-
11	41.19	-	41.19	20.58	-	20.58	20.58	82.35
12	-	-	-	-	-	-	-	-
13	-	-	-	-	-	-	-	-
14	-	-	-	-	-	-	-	-
all sizes	119.72	9.07	128.79	55.65	44.60	100.25	82.85	311.07

* For the size class 0 (operating no land) actual number of cattle/buffaloes has been recorded in columns 2-9 instead of number per 100 hectares of operated area.

TARIF (A) CONTD. : ESTIMATED NUMBER OF OWNED CATTLE AND OWNED BUFFALOES PER 100 HECTARES OF OPERATED AREA, BY SIZE CLASS OF HOUSEHOLD OPERATIONAL HOLDING

State : Tripura

Rural

number of sample villages : 96

number of sample households: 739

size class of household operational holding (code)	number (0.00) of buffaloes owned per 100 hectares of operated area							total	number of cattle and buffaloes owned per 100 hectares of operated area
	males over 3 years			females over 3 years			young stock		
	working	others	sub-total	in milk	others	sub-total			
(1)	(10)	(11)	(12)	(13)	(14)	(15)	(16)	(17)	(18)
0*	-	-	-	-	-	-	-	-	103
1	-	-	-	-	-	-	-	-	797.79
2	-	-	-	-	-	-	-	-	584.96
3	-	-	-	-	-	-	-	-	472.41
4	5.09	-	5.09	-	5.09	5.09	8.03	18.21	392.86
5	2.94	-	2.94	0.74	0.74	1.48	0.74	5.16	296.82
6	8.62	1.73	10.35	0.69	0.69	1.38	0.69	12.42	244.31
7	24.46	-	24.46	-	-	-	-	24.46	222.69
8	17.10	-	17.10	-	6.23	6.23	3.09	26.42	178.73
9	19.37	-	19.37	-	-	-	-	19.37	174.41
10	-	-	-	-	-	-	-	-	-
11	-	-	-	-	-	-	-	-	82.35
12	-	-	-	-	-	-	-	-	-
13	-	-	-	-	-	-	-	-	-
14	-	-	-	-	-	-	-	-	-
all sizes	6.30	0.35	6.65	0.42	1.71	2.13	2.13	10.91	322.80

* For the size class '0' (operating no land) actual number of cattle/buffaloes has been recorded in columns 10-18 instead of number per 100 hectares of operated area.

TABLE (9) : PERCENTAGE OF HOUSEHOLDS NOT HAVING WORKING CATTLE AND BUFFALOES BY SIZE CLASS OF HOUSEHOLD OPERATIONAL HOLDING

State : Tripura

Rural

number of sample villages : 96

number of sample households: 739

size class of household operational holding (code)	number of households (00)	percentage of households not having working animals		percentage of households not having any working cattle or buffaloes
		cattle	buffaloes	
(1)	(2)	(3)	(4)	(5)
0	254	98.43	100.00	98.43
1	329	89.06	100.00	89.06
2	173	79.19	100.00	79.19
3	120	65.83	100.00	65.83
4	367	3.27	62.94	3.27
5	381	1.57	81.36	1.57
6	124	8.87	79.03	8.87
7	22	9.09	81.82	9.09
8	14	14.29	57.14	14.29
9	4	50.00	50.00	
10	-	-	-	
11	2	-	100.00	
12	-	-	-	
13	-	-	-	
14	-	-	-	
	1790	1.96	42.96	1.96

(10) : ESTIMATED NUMBER OF LIVESTOCK (OTHER THAN CATTLE AND BUFFALOES) AND POULTRY OWNED PER 100 HOUSEHOLDS BY SIZE CLASS OF HOUSEHOLD, OPERATIONAL HOLDING

: Tripura

Rural

Number of sample villages : 96

Number of sample households: 739

size class of households (operational holding code)	number (0.00) owned per 100 households								
	sheep	goats	horses & ponies	mules	donkeys	camels	other draught animals	pigs	poultry
(1)	(2)	(3)	(4)	(5)	(6)	(7)	(8)	(9)	(10)
0	-	10.24	-	-	-	-	-	-	64.17
1	-	15.50	-	-	-	-	-	-	49.24
2	-	17.34	3.47	-	-	-	-	1.16	76.88
3	-	31.67	-	-	-	-	-	-	48.33
4	-	47.41	-	-	-	-	-	3.27	110.08
5	1.84	88.19	-	-	-	-	1.31	4.72	129.92
6	-	100.81	1.61	-	-	-	-	13.71	392.74
7	-	9.09	-	-	-	-	-	-	327.27
8	-	171.43	-	-	-	-	-	28.57	242.86
9	-	100.00	-	-	-	-	-	-	250.00
10	-	-	-	-	-	-	-	-	-
11	-	400.00	-	-	-	-	-	-	1500.00
12	-	-	-	-	-	-	-	-	-
13	-	-	-	-	-	-	-	-	-
14	-	-	-	-	-	-	-	-	-
all sizes	7.39	45.70	0.45	-	-	-	0.28	2.96	114.41

TABLE (11) : ESTIMATED NUMBER OF AGRICULTURAL MACHINERY OWNED PER 100 HOUSEHOLDS BY SIZE CLASS OF HOUSEHOLD OPERATIONAL HOLDING

State : Tripura

Rural

number of sample villages : 96

number of sample households: 739

size class of household operational holding (code)	number (0.00) of agricultural machinery owned per 100 households										
	ploughs wooden	ploughs iron	harrows	seed drills	sprayers	dusters	tractors less than 10 h.p.	10-14 h.p.	15-19 h.p.	20 h.p. & above	h.p. not available
(1)	(2)	(3)	(4)	(5)	(6)	(7)	(8)	(9)	(10)	(11)	(12)
0	2.36	-	3.15	-	-	-	-	-	-	-	-
1	6.08	-	4.26	-	-	-	-	-	-	-	-
2	28.90	-	17.34	-	-	4.62	-	-	-	-	-
3	52.50	2.50	31.67	5.00	-	6.67	-	-	-	-	-
4	92.64	-	57.22	2.18	0.82	5.45	-	-	-	-	-
5	132.81	4.72	74.34	4.72	6.56	4.20	-	-	-	-	-
6	140.32	8.06	101.61	8.06	-	18.55	-	-	-	-	-
7	236.36	-	81.82	-	-	63.64	-	-	-	-	-
8	264.28	-	207.14	-	-	-	-	-	-	-	-
9	200.00	-	100.00	-	-	-	-	-	-	-	-
10	-	-	-	-	-	-	-	-	-	-	-
11	200.00	-	100.00	-	-	-	-	-	-	-	-
12	-	-	-	-	-	-	-	-	-	-	-
13	-	-	-	-	-	-	-	-	-	-	-
14	-	-	-	-	-	-	-	-	-	-	-
all sizes	70.39	1.73	42.62	2.35	1.56	4.97	-	-	-	-	-

TABLE (11) CONTD. : ESTIMATED NUMBER OF AGRICULTURAL MACHINERY OWNED PER 100 HOUSEHOLDS BY SIZE CLASS OF HOUSEHOLD OPERATIONAL HOLDING

: Tripura

Rural

number of sample villages : 96

number of sample households : 739

size class of household operational holding (code)	number (0.00) of agricultural machinery owned per 100 households						
	threshers	pumps			cane crushers	oil crushers	others
		electric	diesel	other			
(1)	(13)	(14)	(15)	(16)	(17)	(18)	(19)
0	-	-	-	-	-	-	69.68
1	-	-	-	-	-	-	157.45
2	2.98	-	-	-	-	-	243.35
3	2.50	-	-	-	-	-	281.67
4	1.63	-	-	-	-	-	400.82
5	3.94	-	-	-	-	-	536.48
6	-	-	-	-	-	-	584.68
7	-	-	-	-	-	-	927.27
8	-	-	14.28	-	-	-	585.71
9	-	-	-	-	-	-	900.00
10	-	-	-	-	-	-	-
11	-	-	-	-	-	-	700.00
12	-	-	-	-	-	-	-
13	-	-	-	-	-	-	-
14	-	-	-	-	-	-	-
all sizes	1.62	-	0.11	-	-	-	336.87

TABLE (12) : ESTIMATED NUMBER OF AGRICULTURAL MACHINERY PER 100 HECTARES OF OPERATED AREA AND AREA OPERATED PER TRACTOR BY SIZE CLASS OF HOUSEHOLD OPERATIONAL HOLDING

State : Tripura

Rural

number of sample villages : 96

number of sample households : 739

size class of household operational holding (code)	(estimated number (0.00) of agricultural machinery per 100 hectares of operated area)				estimated area operated per tractor (0.00 hectares)					
	ploughs wooden	ploughs iron	harrow	seed drills	less than 10 h.p.	10-14 h.p.	15-19 h.p.	20 h.p. & above	h.p. not available	all
(1)	(2)	(3)	(4)	(5)	(6)	(7)	(8)	(9)	(10)	(11)
1	71.43	-	50.00	-	-	-	-	-	-	-
2	96.15	-	57.69	-	-	-	-	-	-	-
3	114.54	5.45	69.09	10.91	-	-	-	-	-	-
4	124.09	-	76.64	2.92	-	-	-	-	-	-
5	93.19	3.31	52.30	3.31	-	-	-	-	-	-
6	60.00	3.45	43.45	3.45	-	-	-	-	-	-
7	66.67	-	16.15	-	-	-	-	-	-	-
8	57.81	-	45.31	-	-	-	-	-	-	-
9	38.10	-	19.05	-	-	-	-	-	-	-
10	-	-	-	-	-	-	-	-	-	-
11	21.05	-	10.53	-	-	-	-	-	-	-
12	-	-	-	-	-	-	-	-	-	-
13	-	-	-	-	-	-	-	-	-	-
14	-	-	-	-	-	-	-	-	-	-
all sizes	68.48	2.18	53.58	2.95	-	-	-	-	-	-

TABLE (13) : PERCENTAGE OF HOUSEHOLDS REPORTING PUMPS AND PLOUGHS
BY SIZE CLASS OF HOUSEHOLD OPERATIONAL HOLDING

State : Tripura

Rural

number of sample villages : 96

number of sample households : 739

size class of household operational holding (code)	number of households (00)	percentage of households reporting					
		ploughs		neither wooden nor iron plough	electric	pumps	other
(1)	(2)	wooden (3)	iron (4)	(5)	(6)	(7)	(8)
0	254	3.15	-	96.85	-	-	-
1	329	5.17	-	94.83	-	-	-
2	173	25.43	1.73	74.57	-	-	-
3	120	42.50	-	57.50	-	-	-
4	367	77.38	2.72	22.62	-	-	-
5	381	90.01	1.31	9.19	-	-	-
6	124	94.34	-	5.66	-	-	-
7	22	90.91	-	9.09	-	-	-
8	14	100.00	-	-	-	14.28	-
9	4	100.00	-	-	-	-	-
10	-	-	-	-	-	-	-
11	2	100.00	-	-	-	-	-
12	-	-	-	-	-	-	-
13	-	-	-	-	-	-	-
14	-	-	-	-	-	-	-
all sizes	1790	50.73	1.01	49.27	-	0.11	-

TABLE (14) : ESTI
 PER 100 HOUSEHOLDS BY SIZE CLASS OF HOUSEHOLD OPERATIONAL

State : Tripura

Rural

number of sample villages : 96

number of sample households : 739

size class of household operational holding (code)	number (0.00) of non-farm business equipments owned per 100 households										
	hand-loom	semi-automatic & power looms	ginning, pressing & baling equipments	reeds, bobbing and other accessories used in spinning & weaving	ghanis	oil-mills (power-driven)	rice milling and pounding equipments	flour milling grinding equipments	sewing machines	other tailoring equipments	
(1)	(2)	(3)	(4)	(5)	(6)	(7)	(8)	(9)	(10)	(11)	
0	3.54	-	-	-	-	-	-	-	1.51	-	
1	-	-	1.22	-	-	-	-	-	-	-	
2	-	-	7.51	-	-	-	-	-	-	-	
3	-	-	-	-	-	-	-	-	-	-	
4	0.54	-	-	64.85	-	-	0.82	-	-	-	
5	2.62	-	-	-	-	3.67	-	-	-	-	
6	3.22	-	-	-	-	-	-	-	-	-	
7	-	-	-	-	-	-	-	-	-	-	
8	-	-	-	-	-	-	-	-	-	-	
9	-	-	-	-	-	-	-	-	-	-	
10	-	-	-	-	-	-	-	-	-	-	
11	-	-	-	-	-	-	-	-	-	-	
12	-	-	-	-	-	-	-	-	-	-	
13	-	-	-	-	-	-	-	-	-	-	
14	-	-	-	-	-	-	-	-	-	-	
all sizes	1.40	-	0.95	13.30	-	0.78	0.17	-	0.17	-	

ESTIMATED NUMBER OF DIFFERENT NON-FARM BUSINESS EQUIPMENTS OWNED
PER 100 HOUSEHOLDS BY SIZE CLASS OF HOUSEHOLD OPERATIONAL HOLDING

State ; Tripura

Rural

number of sample villages : 96

number of sample households : 739

size class of household operational holding (code) number (0.00) of non-farm business equipments owned per 100 households

(1)	saws manually operated (12)	saws power driven (13)	lathes (14)	casting, melting & welding equipments (15)	furnace, bellows and other equipments in smithy shop (16)	kilns (17)	potter's wheels (18)	scalers, weights & measures (19)	fishing nets & accessories (20)	musical instruments (21)	electric motors (22)	oil engines (23)	other equipments (24)
0	-	-	-	-	-	-	12.60	60.63	-	-	-	-	36.61
1	0.61	-	-	1.22	-	-	20.97	9.12	-	-	-	-	11.55
2	-	-	-	-	-	-	30.64	56.65	-	-	-	34.68	6.94
3	-	-	-	-	-	-	-	52.50	-	-	-	-	2.50
4	-	-	-	3.27	-	-	14.17	12.81	-	-	-	-	22.62
5	-	-	-	-	-	-	-	29.40	-	-	-	-	6.48
6	-	-	-	-	-	-	-	22.58	-	-	-	-	9.68
7	-	-	-	-	-	-	-	-	-	-	-	-	-
8	-	-	-	-	-	-	-	-	-	-	-	-	-
9	-	-	-	-	-	-	-	-	-	-	-	-	-
10	-	-	-	-	-	-	-	-	-	-	-	-	-
11	-	-	-	-	-	-	-	-	-	-	-	-	-
12	-	-	-	-	-	-	-	-	-	-	-	-	-
13	-	-	-	-	-	-	-	-	-	-	-	-	-
14	-	-	-	-	-	-	-	-	-	-	-	-	-
all sizes	0.11	-	-	0.30	-	-	11.51	20.72	-	-	-	3.35	14.92

TABLE (15) : ESTIMATED NUMBER OF TRANSPORT EQUIPMENTS OWNED PER 100 HOUSEHOLDS BY SIZE CLASS OF HOUSEHOLD OPERATIONAL HOLDING

State : Tripura

Rural

number of sample villages : 96

number of sample households: 739

size class of household operational holding (code)	number (0.00) of transport equipments owned per 100 households								
	boats	motor cars	cars	bicycles	motor cycles/scooters	trucks	trailers	passenger buses	others
(1)	(2)	(3)	(4)	(5)	(6)	(7)	(8)	(9)	(10)
0	-	-	-	-	-	-	-	-	-
1	-	-	-	0.91	-	-	-	-	-
2	-	-	-	-	-	-	-	-	-
3	-	-	-	-	-	-	-	-	-
4	-	-	-	1.63	-	-	-	-	3.27
5	-	-	-	1.84	-	-	-	-	-
6	-	-	-	5.64	-	-	-	-	-
7	-	-	-	9.09	-	-	-	-	-
8	-	-	-	7.14	-	-	-	-	-
9	-	-	-	-	-	-	-	-	-
10	-	-	-	-	-	-	-	-	-
11	-	-	-	-	-	-	-	-	-
12	-	-	-	-	-	-	-	-	-
13	-	-	-	-	-	-	-	-	-
14	-	-	-	-	-	-	-	-	-
all sizes	-	-	-	4.45	-	-	-	-	0.57

PERCENTAGE OF SHARES OF VALUE OF OWNED (i) CATTLE (ii) BUFFALOES (iii) OTHER LIVESTOCK
(iv) AGRICULTURAL MACHINERY (v) NON-FARM BUSINESS EQUIPMENTS (vi) TRANSPORT EQUIPMENT
IN THE TOTAL VALUE OF ALL THE SIX ASSET GROUPS BY SIZE CLASS OF HOUSEHOLD OPERATIONAL HOLDING

State		Rural							
Tripura									
number of sample villages : 96		number of sample households: 739							
size class of household operational holding (code)	total value of six asset groups (Rs.00)	value of asset per 100 households (Rs.00)	value of asset per 100 hect- area of operated area (Rs.00)	percentage shares of value of owned					
				cattle	buffa- loes	other live- stock	agricul- tural machin- ery	non-farm business equip- ments	transport equipments
(1)	(2)	(3)	(4)	(5)	(6)	(7)	(8)	(9)	(10)
0	19158	7543	19158*	43.92	-	4.42	3.00	48.66	-
1	24610	7480	87893	73.52	-	5.85	8.32	11.08	1.23
2	23340	13491	44885	76.01	-	9.42	8.50	6.07	-
3	24905	20754	45282	81.94	-	4.19	8.93	4.94	-
4	176471	48085	64405	62.46	5.50	3.37	5.95	19.09	3.63
5	233289	61231	42963	73.63	2.41	17.65	5.05	1.00	0.26
6	95948	77377	33086	78.61	9.01	5.30	5.43	0.51	1.14
7	28208	128218	36164	70.93	21.09	1.17	5.54	-	1.27
8	23460	167571	36656	41.83	24.31	4.13	29.44	-	1.29
9	3840	96000	18286	60.94	31.25	2.50	5.31	-	-
10	-	-	-	-	-	-	-	-	-
11	2350	117500	12368	87.66	-	8.51	3.83	-	-
12	-	-	-	-	-	-	-	-	-
13	-	-	-	-	-	-	-	-	-
14	-	-	-	-	-	-	-	-	-
all sizes	655579	36625	46030	69.60	5.62	9.05	6.54	7.81	1.30*

* For the size class '0' actual value of asset (Rs.00) is recorded in column 4 instead of asset per 100 hectares of operated area.

TABLE (17) : ESTIMATED NUMBER OF OPERATIONAL HOLDINGS AND AREA OPERATED BY SIZE CLASS OF OPERATIONAL HOLDING

State : Tripura		Rural				
number of sample villages : 96		number of sample householdar 739				
size class of operational holding (code)	estimated number of operational holdings (00)			estimated area operated (00 hectares)		
	sub-sample 1	sub-sample 2	combined	sub-sample 1	sub-sample 2	combined
(1)	(2)	(3)	(4)	(5)	(6)	(7)
1	378	280	329	36	21	28
2	195	151	173	57	46	52
3	147	94	120	67	43	55
4	309	426	368	226	323	274
5	391	370	381	564	523	543
6	109	138	124	260	319	290
7	33	12	22	118	37	78
8	5	24	14	24	105	64
9	-	8	4	-	41	21
10	-	-	-	-	-	-
11	-	4	2	-	39	19
12	-	-	-	-	-	-
13	-	-	-	-	-	-
14	-	-	-	-	-	-
all sizes	1567	1507	1537	1352	1497	1424

(18) : PERCENTAGE AND CUMULATIVE PERCENTAGE DISTRIBUTION OF OPERATIONAL HOLDINGS AND AREA OPERATED BY SIZE CLASS OF OPERATIONAL HOLDING

State : Tripura

Rural

number of sample villages : 96

number of sample households : 739

size class of operational holding (code)	average area of an operational holding (hectares)	percentage of		cumulative percentage of	
		operational holdings	area operated	operational holdings	area operated
(1)	(2)	(3)	(4)	(5)	(6)
1	0.08	21.40	1.97	21.40	1.97
2	0.30	11.26	3.65	32.66	5.62
3	0.46	7.81	3.86	40.47	9.48
4	0.74	23.94	19.24	64.41	28.72
5	1.42	24.79	38.13	89.20	66.85
6	2.34	8.07	20.37	97.27	87.22
7	3.55	1.43	5.48	98.70	92.70
8	4.57	0.91	4.49	99.61	97.19
9	5.25	0.26	1.48	99.87	98.67
10	-	-	-	99.87	98.67
11	9.75	0.13	1.33	100.00	100.00
12	-	-	-	100.00	100.00
13	-	-	-	100.00	100.00
14	-	-	-	100.00	100.00
all sizes	0.93	100.00	100.00		
estimated number of operational holding (00)	x	1537	x		
estimated area operated (00 Hectares)	x	x	1424		

TABLE (19) : PERCENTAGE OF HOLDINGS REPORTING OWNED AREAS AND THOSE REPORTING LEASED IN AREAS AND PERCENTAGE OF OPERATED AREA OWNED AND LEASED IN UNDER DIFFERENT TERMS OF LEASING IN. BY SIZE CLASS OF OPERATIONAL HOLDING

State : Tripura

Rural

number of sample villages : 96

number of sample households: 739

size class of operational holding (code)	estimated number of holding (00)	owned area	percentage of holding reporting leased in area					
			for fixed money	for fixed produce	for share of produce	under usu- fructuary mortgage	other terms	under any term
(1)	(2)	(3)	(4)	(5)	(6)	(7)	(8)	(9)
1	329	89.06	-	-	3.34	-	12.46	15.80
2	173	95.95	1.16	-	13.29	-	4.52	17.92
3	120	96.67	-	2.50	10.00	-	0.83	13.33
4	368	97.01	2.17	2.17	23.10	1.63	9.78	30.98
5	381	98.69	4.46	2.89	27.82	1.05	7.87	37.01
6	124	100.00	7.26	10.48	12.90	1.61	13.71	37.10
7	22	81.82	-	-	22.73	-	9.09	31.82
8	14	100.00	-	14.28	-	-	28.57	42.85
9	4	100.00	-	-	-	-	-	-
10	-	-	-	-	-	-	-	-
11	2	100.00	-	-	-	-	-	-
12	-	-	-	-	-	-	-	-
13	-	-	-	-	-	-	-	-
14	-	-	-	-	-	-	-	-
all sizes	1537	95.64	2.34	2.41	16.79	0.78	9.04	26.87

TABLE (19) CONTD. : PERCENTAGE OF HOLDINGS REPORTING OWNED AREAS AND THOSE REPORTING LEASED IN AREA AND PERCENTAGE OF OPERATED AREA OWNED AND LEASED IN UNDER DIFFERENT TERMS OF LEASING IN BY SIZE CLASS OF OPERATIONAL HOLDING

State : Tripura

Rural

number of sample villages : 96

number of sample households: 739

size class of operational holding (code)	estimated area operated (00 hectares)	owned	percentage of operated area					total
			leased in		for share of produce	under usu- fructuary mortgage	other terms	
			for fixed money	for fixed produce				
(1)	(10)	(11)	(12)	(13)	(14)	(15)	(16)	(17)
1	28	90.00	-	-	4.29	-	5.71	10.00
2	52	85.72	1.02	-	8.16	-	5.10	14.28
3	55	93.38	-	0.74	5.14	-	0.74	6.62
4	274	83.78	0.59	0.88	12.98	0.29	1.46	16.22
5	543	86.14	1.27	1.72	10.80	0.15	0.52	13.86
6	290	89.96	2.79	0.84	2.65	0.56	3.20	10.04
7	78	77.60	-	-	14.58	-	7.82	22.40
8	64	94.34	-	1.26	-	-	4.40	5.66
9	21	100.00	-	-	-	-	-	-
10	-	-	-	-	-	-	-	-
11	19	100.00	-	-	-	-	-	-
12	-	-	-	-	-	-	-	-
13	-	-	-	-	-	-	-	-
14	-	-	-	-	-	-	-	-
all sizes	1424	87.11	1.20	0.86	8.54	0.23	2.06	12.89

TABLE (20) : PERCENTAGE OF INDIVIDUAL AND JOINT OPERATIONAL HOLDINGS AND THEIR PERCENTAGE SHARES OF AREA OPERATED BY SIZE CLASS OF OPERATIONAL HOLDING

State : Tripura

Rural

number of sample villages : 96

number of sample households: 739

size class of operational holding (code)	number of operational holding (00)	percentage of holdings		area operated (00 hectares)	percentage of area operated	
		individual	joint		individually	jointly
(1)	(2)	(3)	(4)	(5)	(6)	(7)
1	329	100.00	-	28	100.00	-
2	173	100.00	-	52	100.00	-
3	120	100.00	-	55	100.00	-
4	368	100.00	-	274	100.00	-
5	381	100.00	-	543	100.00	-
6	124	100.00	-	290	100.00	-
7	22	100.00	-	78	100.00	-
8	14	100.00	-	64	100.00	-
9	4	100.00	-	21	100.00	-
10	-	-	-	-	-	-
11	2	100.00	-	19	100.00	-
12	-	-	-	-	-	-
13	-	-	-	-	-	-
14	-	-	-	-	-	-
all sizes	1537	100.00	-	1424	100.00	-

TABLE (21) : AVERAGE NUMBER OF ATTACHED FARM WORKERS PER OPERATIONAL HOLDING (REPORTING) FOR DIFFERENT MAJOR AGRICULTURAL SEASONS BY SIZE CLASS OF OPERATIONAL HOLDING

State : Tripura

Rural

number of sample villages : 96

number of sample households: 739

size class of operational holding (code)	number of holdings (00)	percentage of holdings reporting attached farm workers	average number of farm workers per reporting holding during major crop season	average number of farm workers per reporting holding during major crop season				
				autumn	winter	spring	summer	perennial
(1)	(2)	(3)	(4)	(5)	(6)	(7)	(8)	(9)
1	329	3.65	1.00	1.00	1.00	-	-	-
2	173	13.87	1.00	1.00	1.00	-	-	-
3	120	1.67	1.00	1.00	-	-	-	-
4	368	5.16	1.00	1.00	1.00	-	-	-
5	381	10.50	1.14	1.00	1.18	2.00	-	-
6	124	13.71	1.00	1.00	1.00	-	-	-
7	22	22.73	1.00	-	1.00	-	-	-
8	14	57.14	1.33	1.33	-	-	-	-
9	4	50.00	1.00	1.00	-	-	-	-
10	-	-	-	-	-	-	-	-
11	2	100.00	1.00	1.00	-	-	-	-
12	-	-	-	-	-	-	-	-
13	-	-	-	-	-	-	-	-
14	-	-	-	-	-	-	-	-
all sizes	1537	8.52	1.06	1.03	1.05	2.00	-	-

ERRATA - TRIPURA

Sl. No.	Page No.	Table No.	Size Class	Column No.	Original Entry	Revised Entry
(0)	(1)	(2)	(3)	(4)	(5)	(6)
1	39	1	7	10	11.00	14.33
2	40	2	7	2	3.00	4.00
3	41	3	3	10	-	0.00
4	42	4	2	15	133.00	133.33
5	43	5	7	10	11.00	14.33
6	44	6	5	2	1.33	1.42
7	44	6	7	2	3.00	4.00
8	45	7	0	7	5.39	5.29
9	61	19	all sizes	12	-	0.00
10	61	19	"	14	22.58	21.33
11	61	19	"	16	6.45	8.00
12	61	19	"	17	29.03	29.33
13	67	3	7	10	-	0.00
14	69	5	10	3	-4	-

ERRATA - TRIPURA

SL. NO.	PAGE No.	TABLE NO.	SIZE CLASS	COLUMN NO.	ORIGINAL ENTRY	REVISED ENTRY
(0)	(1)	(2)	(3)	(4)	(5)	(6)
15	v	I		7,8,9 & 10	-	8,9,10 & 11
16		9	all sizes		1.36	53.55
17	v	9	"	5	1.36	53.74
18	52	10		11	55.72	89.06
19	58	19	2	12	1.02	3.78
20				14	3.16	6.25
21	58		2	16	5.10	3.91
22				17	14.28	10.84
23	53	11	all sizes	11	57.11	87.22
24	54		"	12	1.20	1.13
25	55	19	"	13	1.67	0.65
26	56	19	"	14	0.54	8.46
27	55	19	"	1	2.15	2.05
28	56	19	"	17	12.07	12.78