

THE NATIONAL SAMPLE SURVEY

ELEVENTH ROUND
AUGUST 1956—JANUARY 1957

NUMBER 51

TABLES WITH NOTES ON
HOUSING CONDITION



सत्यमेव जयते



Issued by

The Cabinet Secretariat : Government of India

Printed by the Eka Press, Calcutta in 1961 and published
by the Manager of Publications, Civil Lines, Delhi-8

THE NATIONAL SAMPLE SURVEY

ELEVENTH ROUND
AUGUST 1956—JANUARY 1957

NUMBER 51

TABLES WITH NOTES ON
HOUSING CONDITION



सत्यमेव जयते



Issued by

The Cabinet Secretariat : Government of India

Printed by the Eka Press, Calcutta in 1961 and published
by the Manager of Publications, Civil Lines, Delhi-8

Note of Caution

Being the scanned copy of old NSS report, this document may suffer from following limitations -

- i. Poor Quality of the Scanned images.
- ii. Page(s) missing in between.
- iii. Improper sequencing/arrangement.

ACKNOWLEDGEMENT

This report was prepared by Susanta Ranjan Guha, Ajit Kumar Roy, Priyatosh Maitra and Girija Prasad Mukherji. The survey design was prepared by the Indian Statistical Institute. The data from the field were collected by the Directorate of National Sample Survey, and the Indian Statistical Institute to some extent (West Bengal). The processing of the data was done under the supervision of Nalini Kanta Dey, Rajendra Chandra Roy, Shyamsundar Bose, Pabitra Kumar Das and Kalipada Chakravarti.

CONTENTS

	PAGE
CHAPTER ONE : Introduction	1
TWO : Scope and design of the survey	2
THREE : Concepts and definitions	4
Four : Summary of main results	6
APPENDIX I : Method of estimation	12
II : Statistical Tables	13
III : Facsimile of the Schedules of Investigation	91

THE NATIONAL SAMPLE SURVEY
ELEVENTH ROUND : AUGUST 1956—JANUARY 1957

NUMBER 51

TABLES WITH NOTES ON
HOUSING CONDITION

*This report entitled "Tables with Notes on Housing Condition", eleventh round, August 1956 to January 1957, was prepared by the Indian Statistical Institute, Calcutta, and is being published in the form in which it was submitted to the Government of India, and Government are not responsible for the views contained in the report.**

CHAPTER ONE

INTRODUCTION

1.1. Data on condition of residential housing and facilities enjoyed by households in the rural and urban areas on an all-India basis were being collected by the National Sample Survey (NSS) from the seventh round (October 1953 to March 1954) of its survey. A report on the data collected in the seventh round has already been published as NSS Report Number 26. The report on the tenth round (December 1955 to May 1956) data is going through the press.

1.2. This report, as previous ones, presents information on condition of residential housing of both the rural and urban households on an all-India basis. The information relates to the data collected in the eleventh round of the National Sample Survey conducted during the six-month period August 1956 to January 1957.

1.3. Chapter Two describes the scope and design of the survey. Chapter Three gives the concepts and definitions followed in the survey. Chapter Four gives a short summary of the salient features of housing condition and amenities enjoyed. There are three appendices, of which Appendix I describes the method of estimation, Appendix II contains detailed statistical tables and Appendix III shows the facsimile of the schedule canvassed in the survey.

* The draft report (No. D. 71) was submitted to the Government of India in March 1960.

CHAPTER TWO

SCOPE AND DESIGN OF THE SURVEY

2.1. The whole of India with the exception of Andaman, Nicobar, Aminidive and Laccidive Islands, was covered in the eleventh round of the National Sample Survey conducted during the six months from August 1956 to January 1957. The results given in this report cover information on housing condition of the rural and urban areas on an all-India basis. A short description of the sample design adopted in the rural and urban sectors is given below:

2.2. *Rural* : The entire rural area of the country was divided into 72 strata; and sampling was done in two stages. Stratification was carried out by dividing the rural areas, in the first instance, into 39 primary strata, designed as NSS-ALE zones. These zones were so formed as not to cut across the boundaries either of the Census 'natural divisions' or of the 75 zones into which the rural areas were divided for purposes of stratification during the previous Agricultural Labour Enquiry (ALE). In forming these zones it was also ensured that the proportion of agricultural labourers and their dependants in each zone was not less than one per cent of the total rural population of the zone according to the 1951 Census data. These 39 zones were further sub-divided into 72 ultimate strata, each consisting of a group of districts which was more or less homogeneous with respect to the proportion of agricultural labourers and their dependants to the total rural population. The rural population in each stratum was approximately of the same size with a few exceptions.

2.3. In the first stage of sampling, a number of villages were selected from each stratum with probability proportional to the population of the village and with replacement, the number of villages sampled from a stratum being made proportional to the rural population of the stratum subject to the restriction that the number of sample villages in each stratum would be a multiple of 24. This method of selection and allocation made it possible for the survey to be conducted in 4 interpenetrating sub-samples of the same size providing 4 independent sets of estimates. Two sets of estimates are presented in this report, each set being formed by merging two sub-sample estimates. Thus sample 1 is the average of sub-samples 1 and 2, likewise sample 2 is to be average of sub-samples 3 and 4. Pooled estimates were arrived at by calculating the mean of the two sample estimates. The total number of villages sampled was 1848.

2.4. In the second stage of sampling, from each sample village 4 sample households consisting, on an average, of 2 agricultural labour households and 2 non-agricultural labour households, were selected systematically with random start from two different frames of agricultural labour households and non-agricultural labour households respectively.

Housing Condition

2.5. *Urban* : The urban sector was divided into 94 strata. Towns with a population of 3 lakhs and above and capitals of Part A and Part B States (with the exception of Shillong, the capital of Assam the population of which was comparatively low) were each formed into a separate stratum. Excluding these, the rest of the urban areas, in each natural division also formed independent strata. In the State of Jammu and Kashmir, the city of Srinagar and the town of Jammu were treated as separate strata. For greater Calcutta, strata were formed within the city of Calcutta (excluding Tollygung), each stratum consisting of several adjoining wards. Among the rest of greater Calcutta area, some towns and cities or groups of towns were treated as separate strata. A total of 584 blocks were allocated to the different strata so formed. The sample blocks were allocated to these strata in proportion to their respective non-agricultural population.

2.6. In each stratum, the sample units were drawn in two stages. In the first stage, the sample blocks (constructed on the basis of 1951 population Census enumeration blocks) were selected systematically with a random start and in the second stage 5 households consisting of 1 agricultural labour household and 4 non-agricultural labour households were selected in the same manner from three different frames of the sample blocks. The three different frames consisted of (i) agricultural labour households, (ii) non-agricultural labour households with household size 1 to 4 and (iii) non-agricultural labour households with household size 5 and above.

2.7. Like the rural sector, the two sample estimates and the pooled one have been arrived at and are being presented in this report.

CHAPTER THREE

CONCEPTS AND DEFINITIONS

3.1. Concepts and definitions followed in the present round were more or less the same as in earlier rounds. Explanatory notes on some basic concepts and definitions adopted in the survey are given below.

3.2. *Household* : A household is a group of persons usually living together and taking principal meals from a common kitchen. A boarding house, a hostel or a hotel is treated as a cluster of households, where each individual boarder (with his dependants or guests) forms a separate household. Households maintained and fed directly by Government such as those in prisons, police quarters, cantonments, hospitals, asylums, and relief camps are, however, excluded from the scope of the National Sample Survey.

3.3. *Household member* : Any person who takes principal meals with a household for at least 16 days (not necessarily continuous) within a period of 30 days preceding the date of the enquiry is considered to be a member of the household. Such a person may be the head of the household, or a relation or protegee of the head, or an ex-employee, or a guest of the household. For the purpose of occupancy each member of the household, irrespective of age, was considered as one unit.

3.4. *Dwelling house* : It includes any structurally separate room or suite of rooms of permanent structures used, or intended, for habitation by family household, and having separate access to a street or to a common passage or stairway. Any detached structures which are used, or clearly intended to be used, as an integral part of the dwelling house were also considered as a part of the dwelling. But any portion of the dwelling house, which might have been originally intended for habitation but is in practice used for non-residential purpose like office or for family enterprises, was excluded from housing statistics.

3.5. *Structure type* : A *katcha* or *pucca* structure is determined by the type of construction materials used. A *katcha* house is one whose plinth was made of mud or bricks without any cement plaster and whose walls and roof have been built of grass, leaves, reeds or thatch with or without any plaster. A *pucca* house is one whose plinth (and floor), walls and roof was made of burnt bricks, tiles, stone, cement and/or timber. The structures included in the category 'others' are those

Housing Condition

not designed with any pre-determined plan for residential purposes, and are, notwithstanding, actually being used as living quarters. These quarters have, in general, unconventional arrangements like that of caves, abandoned railway wagons, tents, etc.

3.6. *Room* : It means any construction with walls and/or partitions on all sides and a roof overhead used, or intended to be used, for living purpose, and includes bedrooms, living rooms, habitable attics, servants' rooms, etc. The purposes for which any room is used were given precedence over the physical characteristics in determining the definition of a room.

3.7. *Floor space* : The inside floor area of bed rooms, living and dining rooms, habitable attics, covered verandah and servants' rooms, was taken into consideration in determining the floor space of a dwelling house.

CHAPTER FOUR

SUMMARY OF MAIN RESULTS

4.1. A few selected results are presented here to give a broad picture of the condition of residential housing and facilities enjoyed by family households in rural and urban areas. Tables referred to in the following paragraphs are those in Appendix II.

4.2. *Household size and rooms occupied* : In the rural area a little more than 68 per cent of the households did not possess more than two rooms, and in the urban area this percentage was a little more than 69. Households possessing from three to six rooms accounted for 29 per cent in the rural sector and about 27 per cent in the urban sector where the majority of the households 58.45 per cent in the rural area and 51.51 per cent in the urban area had three to six members. Among the six Population Zones* it was observed that in the three rural zones, namely, South (Madras, Mysore, Travancore-Cochin and Coorg), West (Bombay, Saurashtra and Kutch) and Central India (Madhya Pradesh, Madhya Bharat, Hyderabad, Bhopal and Vindhya Pradesh) the percentage of households possessing one room was higher than in other three zones, namely, North (Uttar Pradesh), East (Bihar, Orissa, West Bengal, Assam, Manipur and Tripura) and North-West India (Rajasthan, Patiala and East Punjab States Union, Jammu and Kashmir, Ajmer, Delhi, Punjab, Bilashpur and Himachal Pradesh). In the first three zones this percentage was of the order of 42, and in the other three zones it varied from 25 to 34. The crowding in one room accommodation in big cities like Calcutta, Bombay, Delhi and Madras was still worse than in either small or big towns. In these cosmopolitan cities about 65 per cent of the households lived in one room whereas about 36 to 38 per cent of the households in small and big towns possessed the same type of accommodation.

4.3. *Household expenditure and rooms occupied* : In the rural area 80 per cent of the households did not spend more than Rs. 100 per month of whom 33 per cent lived in one room and 27 per cent in two rooms, and the remaining about 40 per cent possessed more than two rooms. In the urban sector about 63 per cent of the households did not spend more than Rs. 100 per month of whom 30 per cent possessed one room and 19 per cent lived in two rooms, and the remaining 51 per cent lived in more than two rooms. As could be anticipated, crowding in one-room accommodation was acute in lower expenditure class. In the rural area in

*These are groups of States as defined by the Registrar General, Ministry of Home Affairs, Government of India, in a Memorandum issued in 1951.

Housing Condition

the household expenditure level up to Rs. 25 per month, 63 per cent of the households lived in one room, and in the urban sector this percentage was about 74. In the next household expenditure level of Rs. 26-50 per month, about 46 per cent of the households did not have any better accommodation than two rooms in the rural area, and in the urban area these households accounted for 60 per cent.

4.4. *Number of persons per room* : It has been noted earlier that in the rural area the percentage of households living in one room was higher in the three zones South, West and Central India than in the other three zones. It will be observed from Table 1.4 that in these three zones and also in North-West India the percentage of households with 3 or more persons per room varied from 30.25 in North-West India to 38.34 in West India while the percentages of this type of households were 24.14 in East India and 16.52 in North India. In cities like Bombay, Calcutta, Delhi and Madras nearly 28 per cent of the households had to accommodate 3 or more persons per room, and in both big and small towns about one-fourth of the households had crowding of this nature.

4.5. In rural India as a whole more than one-fourth (27.69 per cent) of the households had to accommodate from 3 or more members per room, nearly one-fourth (22.99 per cent) had 2 to less than 3 members per room, and the balance half (49.32 per cent) had less than 2 members per room. In the urban area as a whole the corresponding percentages were 24.43, 22.31 and 53.2 respectively.

4.6. As has been observed in earlier rounds, the average number of persons per room progressively decreased as the monthly per capita expenditure level increased, and gradually increased as the size of the household increased. In the rural sector there were, on an average, 2.2 persons per room while in the urban sector there were 2.1 persons per room. In the lowest per capita expenditure level of Rs. 0-8 per month, on an average, three members had to live in a room, and in the highest per capita expenditure level of Rs. 55 and above per month, there were 1.1 persons per room in the rural area. In the urban area in the above lowest per capita expenditure level there were 2.8 persons per room which decreased to 1.2 persons per room in the highest per capita expenditure of Rs. 55 and above per month. Considering the sizes of the households, in the rural area, there were 0.6 person per room in the one-member households which increased to 3.1 persons per room in the households size with 9 or more number of persons. The corresponding figures for the urban sector were 0.8 and 2.6 persons per room respectively.

4.7. *Floor space* : Both in the rural and urban areas, the percentage of households occupying floor space from 101 to 200 sq. ft. was the highest than in any other floor space groups shown in Tables 1.7 and 2.7. In the rural area nearly one-third (30.32 per cent) of the households fell within this floor space group while in the urban area a little less than one-fourth (26.61 per cent) of the households accounted for this floor space group. Further, in rural India about 64 per cent of the households did not possess more than 300 sq. ft., a little more than 22 per cent of the house-

holds occupied from 301 to 600 sq. ft., and the balance nearly 14 per cent fell within the floor space group 601 sq. ft. and above. In the urban area, 67 per cent of the households did not possess more than 300 sq. ft., about 20 per cent fell within the floor space group 301 to 600 sq. ft. and the balance 13 per cent occupied floor space from 601 sq. ft. or more.

4.8. *Per capita floor space* : Both in the rural and urban sectors, the percentage of households with per capita floor space 26-50 sq. ft. was higher than in any other per capita floor space groups shown in Tables 1.8 and 2.8. Further in the rural area the per capita floor space up to 50 sq. ft. covers 48.11 per cent of the households, 27.66 per cent of the households fell within the per capita floor space group 51-100 sq. ft.; 15.81 per cent within the group 101-200 sq. ft. per head, and the balance 8.42 per cent accounted for the per capita floor space group 201 sq. ft. and above. In the urban area 46.55 per cent of the households were covered by the per capita floor space group up to 50 sq. ft.; 28.11 per cent by the group 51 to 100 sq. ft. per head, 17.14 per cent by the group 101 to 200 sq. ft., and the balance 8.20 per cent fell within the group 201 sq. ft. and above. Further congestion, as could be expected, in small towns was less acute than in either big towns or cities. In small towns about 44 per cent of the households did not have floor space more than 50 sq. ft. per head. In big towns a little more than 51 per cent and in big cities like Bombay, Calcutta, Delhi and Madras as high as 67 per cent of the households could not offer more than 50 sq. ft. of floor space per head.

4.9. The average floor space per person, as could be expected, progressively deteriorated, as the per capita expenditure of the household decreased, or as the size of the household increased. The overall picture for both the rural and urban sectors was, however, more or less the same. In the rural sector, the overall average floor space per person was about 83 sq. ft. But in the highest per capita expenditure level of Rs. 55 and above per month, the average floor space per head was as high as 165 sq. ft. which decreased to 43 sq. ft. in the lowest ladder of the per capita expenditure level of Rs. 0-8 per month. Again, in one-member households the per capita floor space was about 192 sq. ft. but as the size of the household increased the per capita floor space progressively deteriorated and it became about 63 sq. ft. in households with nine or more members. The over-all average floor space per head in the urban sector was no better than 81 sq. ft. It was as high as 132 sq. ft. in the highest expenditure level Rs. 55 and above per head per month and was as low as about 59 sq. ft. in the lowest per capita expenditure level Rs. 0-8 per month. In one-member households, in the urban sector, the average floor space per person was 182 sq. ft. and it gradually deteriorated as the size of the household increased and became about 63 sq. ft. in the households with nine or more members. On the basis of a minimum requirement about 100 sq. ft. of floor space per head, it will be observed from Tables 1.12 and 2.12 that only roughly one-fourth of the rural and urban households could offer this space per head to their members and the remaining three-fourths had floor space below this minimum level.

Housing Condition

4.10. In Table 1.13A and 2.13A are given the cumulative percentages of population, the total floor space, and the total number of rooms occupied for residential purpose respectively for the rural and urban sectors by ten percentage groups of households ranked in ascending order according to their per capita floor space. These tables have been followed by two charts for each sector showing concentration of total floor space and number of rooms. The concentration ratios for floor space for the rural and urban sectors have been calculated as 0.480 and 0.434; these ratios for the number of occupied room for the rural and urban sectors are 0.208 and 0.235 respectively. The concentration ratio is the ratio of the area covered by the concentration curve and the egalitarian line to that of the triangle bounded by the egalitarian line and the two axes.

4.11. It will be seen that the bottom 20 per cent of the households represented about 24 per cent of the rural population and occupied only 6 per cent of the total floor space and 15 per cent of the total number of rooms, while the top 20 per cent of the household accounted for about 15 per cent of the rural population and possessed as high as 47 per cent of the total floor space and 25 per cent of the total number of rooms. Further in this sector the lower 50 per cent of the households representing about 57 per cent of the population possessed about 24 per cent of the total floor space

TABLE (4-1) : PERCENTANGES OF POPULATION, FLOOR SPACE AND NUMBER OF ROOMS SHARED BY CERTAIN CUMULATIVE PERCENTAGE LEVELS OF HOUSEHOLDS

percent of households	rural			urban		
	per cent share of			per cent share of		
	population	total floor space	total number of rooms	population	total floor space	total number of rooms
(1)	(2)	(3)	(4)	(5)	(6)	(7)
1. bottom 20 per cent	23.56	6.17	15.30	54.01	19.19	36.91
2. (lower half) 50 "	56.82	23.58	42.10	89.25	57.46	78.53
3. top 20 per cent	14.53	47.26	25.32	3.30	23.61	8.67

and 42 per cent of the total number of rooms. In the urban sector, the bottom 20 per cent of the households represented as high as 54 per cent of the population but possessed only 19 per cent of the total floor space and about 37 per cent of the total number of rooms, while the top 20 per cent of the households accounted for only a little more than 3 per cent of the population and occupied about 24 per cent of the total floor space and about 9 per cent of the total number of rooms.

4.12. *Source of drinking water* : As has been observed in the earlier NSS rounds, the majority of the rural population used wells as the principal source of drinking water, and in cities like Bombay, Calcutta, Delhi and Madras, and also in big towns municipal tap was the main source of supply of drinking water. In rural India, 69 per cent of the households or about 71 per cent of the population used wells. Only 1 per cent of the households used tap water and a little more than 5 per cent of the households used tube-wells as the source of drinking water. In the urban sector as a whole, 51 per cent of the households used municipal taps, but in the four big cities and big towns there were respectively 95 and 76 per cent of the households who used municipal taps; in small towns about 39 per cent of the households used this source of drinking water. In urban areas, tanks and ponds were also not less important as about 34 per cent of the urban population as a whole got their supply of drinking water from this source. Tube-wells were not of much importance even in urban sector, as it supplied drinking water to only about 2 per cent of the urban population.

4.13. In India built-up latrine is almost an unknown household amenity in the rural area where as high as 95 per cent of the households did not have any built-up latrine at all and only about 5 per cent of the households used built-up latrine either for private or in common use with other households. In the urban sector as a whole, 42 per cent of the households did not use any built-up latrine, and about 38 per cent used built-up latrine in common with other households and only 20 per cent had this amenity for individual household use. In big cities like Bombay, Calcutta, Delhi and Madras 74 per cent of the households had built-up latrines in common use with other households, a little more than 13 per cent had it for private household use, and a little more than 12 per cent had no built-up latrines at all. In small towns, 51 per cent of the households had no built-up latrine, 21 per cent had for individual household use, and about 28 per cent had in common use with other households. In big towns, 21 per cent of the households did not have it, 22 per cent had it for individual use, and 56 per cent had it in common use with other households.

4.14. *House structure* : In the rural sector, three-fifths of the households could not have any living accommodation in houses better than *katcha* structures and only about 3 per cent had *pucca* structures to live in. In urban sector, 20 per cent of the households lived in *katcha* structures and only 13 per cent lived in *pucca* ones.

4.15. As could be expected, reluctance to live in *katcha* structures was noticeable as the expenditure level of the households improved. In the lowest household expenditure level of Rs. 0.25 per month, a little more than 71 per cent of the households lived in *katcha* structures and this percentage gradually decreased with the improvement of expenditure level of the households who, naturally, preferred to move in more permanent type of structures. In the highest household expenditure level of Rs. 301 or above per month, only 32 per cent of the households lived in *katcha* structures and the majority in other types of durable structures. In the

Housing Condition

urban sector, about 59 per cent of the households of the lowest household expenditure level Rs. 0.25 per month lived in *katcha* structures and this percentage perceptibly deminished as the expenditure level of the households improved. In the highest household expenditure level Rs. 301 and more, only 2.57 per cent lived in *katcha* structures and about 21 per cent in *pucca* houses. It may, however, be noted here that there were a good number of households both in the rural and urban sectors, who either possessed accommodation with unconventional living arrangements or information of the structure type was lacking.

4.16. *Structure type and its age* : In the rural area about 10 per cent of the households lived in structures constructed within a year from the date of the survey of which 6 per cent were all *katcha* structures. Those households who lived in houses constructed within 4 years of the date of the survey accounted for 21 per cent, of which about 14 per cent were *katcha* structures. About 59 per cent of the households lived in houses built within 22 years of the date of the survey out of which 37 per cent lived in *katcha* structures, and the balance 41 per cent lived in structures constructed more than 22 years before the date of the survey.

APPENDIX I

METHOD OF ESTIMATION

The estimates presented in this report are, in general, percentage distribution of households or persons by some important characteristics like average number of persons per room, floor space per person, structure type, latrine type, etc.

The all-India totals of any characteristics of the rural and urban area were estimated by the formulae

$$\hat{Y}(rural) = \sum_s \frac{1}{n_s} \sum_i \frac{1}{p_{is}} \times \frac{H_{si}}{h_{si}} \sum_j Y_{sij}$$

and

$$\hat{Y}(urban) = \sum_s \frac{N_s}{n_s} \sum_i \frac{H_{si}}{h_{si}} \sum_j Y_{sij}$$

- where, N_s = total number of blocks in the s th stratum
 n_s = number of villages/blocks sampled in the s th stratum
 P_{is} = probability of selection of the i th village in the s th stratum
 H_{si} = total number of households in the i th village/block of the s th stratum
 h_{si} = number of households sampled in the i th village/block of the s th stratum
 Y_{sij} = value of the characteristic for the j th household of the i th village/block of the s th stratum.

The summations s, i, j , represent summation over strata, sample villages/blocks and sample households respectively.

APPENDIX II

STATISTICAL TABLES

		PAGE
TABLE 0.1	: Distribution of sample villages and blocks with their respective households by state and population zones in All India.	15
0.2	: Distribution of blocks in urban areas of India	16

RURAL

HOUSING ACCOMMODATION

TABLE 1.1	: Percentage distribution of households by number of persons and number of rooms ..	17
1.2	: Percentage distribution of households by number of rooms and population zones ..	18
1.3	: Percentage distribution of households by number of rooms and monthly household expenditure level	19
1.4	: Percentage distribution of households by average number of persons per room and population zones	21
1.5	: Percentage distribution of households by average number of persons per room and monthly household expenditure level	22
1.6	: Average number of persons per room by monthly per person expenditure level and number of persons in household	24
1.7	: Percentage distribution of households by floor space (sq. ft.) and monthly household expenditure level	25
1.8	: Percentage distribution of households by floor space (sq. ft.) per person and population zones	28
1.9	: Percentage distribution of households by floor space (sq. ft.) and population zones ..	29
1.10	: Percentage distribution of households by floor space (sq. ft.) per person and number of persons in household	30
1.11	: Percentage distribution of households by monthly household expenditure level and floor space (sq. ft.) per person	33
1.12	: Percentage distribution of households by monthly per person expenditure level and floor space (sq. ft.) per person	36
1.13	: Average floor space (sq. ft.) per person by monthly per person expenditure level and number of persons in household	39
1.13A	: Cumulative percentage of population, floor space, and number of rooms by sub-sample	40

HOUSEHOLD AMENITIES

1.14	: Percentage distribution of households by source of drinking water and population zones	42
1.15	: Percentage distribution of population by source of drinking water and population zones	43
1.16	: Percentage distribution of households by source of drinking water and monthly household expenditure level	44
1.17	: Percentage distribution of households by latrine type and population zones ..	46

STRUCTURE TYPE OF HOUSES

TABLE 1.18	: Percentage distribution of households by structure type and monthly household expenditure level	47
------------	---	----

National Sample Survey

		PAGE
TABLE 1.19	: Percentage distribution of population by structure type and monthly household expenditure level	49
1.20	: Percentage distribution of households by structure type and period built since ..	51
1.21	: Percentage distribution of population by structure type and period built since ..	53

URBAN

HOUSING ACCOMMODATION

TABLE 2.1	: Percentage distribution of households by number of persons and number of rooms..	54
2.2	: Percentage distribution of households by number of rooms and stratum group ..	55
2.3	: Percentage distribution of households by number of rooms and monthly household expenditure level	56
2.4	: Percentage distribution of households by average number of persons per room and stratum group	58
2.5	: Percentage distribution of households by average number of persons per room and monthly household expenditure level	59
2.6	: Average number of persons per room by monthly per person expenditure level and number of persons in household	61
2.7	: Percentage distribution of households by floor space (sq. ft.) and monthly household expenditure level	62
2.8	: Percentage distribution of households by floor space (sq. ft.) per person and stratum group	65
2.9	: Percentage distribution of households by floor space (sq. ft.) and stratum group	66
2.10	: Percentage distribution of households by floor space (sq. ft.) per person and number of persons in household	67
2.11	: Percentage distribution of households by floor space (sq. ft.) per person and monthly household expenditure level	70
2.12	: Percentage distribution of households by monthly per person expenditure level and floor space (sq. ft.) per person	73
2.13	: Average floor space (sq. ft.) per person by monthly per person expenditure level and number of persons in household	76
2.13A	: Cumulative percentage of population, floor space, and number of rooms by sub-samples	77

HOUSEHOLD AMENITIES

TABLE 2.14	: Percentage distribution of households by source of drinking water and stratum group	79
2.15	: Percentage distribution of population by source of drinking water and stratum group	80
2.16	: Percentage distribution of households by source of drinking water and monthly household expenditure level	81
2.17	: Percentage distribution of households by latrine type and stratum group ..	83

STRUCTURE TYPE OF HOUSES

TABLE 2.18	: Percentage distribution of households by structure type and monthly household expenditure level	84
2.19	: Percentage distribution of population by structure type and monthly household expenditure level	86
2.20	: Percentage distribution of households by structure type and period built since ..	88
2.21	: Percentage distribution of population by structure type and period built since ..	89

Housing Condition

TABLE (0.1) : DISTRIBUTION OF SAMPLE VILLAGES AND BLOCKS WITH THEIR RESPECTIVE HOUSEHOLDS ALLOTTED AND SURVEYED BY STATES AND POPULATION ZONES : ALL INDIA

states by population zones	rural				urban			
	number of sample villages		number of sample households		number of sample blocks		number of sample households	
	allotted	surveyed	allotted	surveyed	allotted	surveyed	allotted	surveyed
(1)	(2)	(3)	(4)	(5)	(6)	(7)	(8)	(9)
1. Uttar Pradesh	312	312	1248	1240	68	68	340	340
2. North India	312	312	1248	1240	68	68	340	340
3. Bihar	192	192	768	743	18	18	90	89
4. Orissa	72	72	288	284	8	8	40	40
5. West Bengal	120	120	480	481	72	72	360	360
6. Assam	65	57	260	229	6	6	30	30
7. Manipur	5	5	20	20	2	2	10	9
8. Tripura	2	2	8	8	—	—	—	—
9. East India	456	448	1824	1765	106	106	530	528
10. Andhra Pradesh	96	96	384	375	22	22	110	110
11. Madras	144	144	576	573	62	62	310	309
12. Mysore	47	47	188	185	20	20	100	96
13. Travancore-Cochin	48	48	192	192	14	14	70	70
14. Coorg	1	1	4	4	2	2	10	10
15. South India	336	336	1344	1329	120	120	600	595
16. Bombay	144	144	576	567	118	118	590	549
17. Saurashtra	22	22	88	87	10	10	50	50
18. Kutch	2	2	8	7	2	2	10	10
19. West India	168	168	672	661	130	130	650	609
20. Madhya Pradesh	96	96	384	378	20	20	100	100
21. Madhya Bharat	70	70	280	270	12	12	60	52
22. Hyderabad	96	96	384	381	28	28	140	133
23. Bhopal	2	2	8	8	2	2	10	8
24. Vindhya Pradesh	24	24	96	96	2	2	10	10
25. Central India	288	288	1152	1133	64	64	320	303

National Sample Survey

TABLE (0.1) (Contd) : DISTRIBUTION OF SAMPLE VILLAGES AND BLOCKS WITH THEIR RESPECTIVE HOUSEHOLDS ALLOTTED AND SURVEYED BY STATES AND POPULATION ZONES IN ALL INDIA

states by population zones	rural				urban			
	number of sample villages		number of sample households		number of sample blocks		number of sample households	
	allotted	surveyed	allotted	surveyed	allotted	surveyed	allotted	surveyed
(1)	(2)	(3)	(4)	(5)	(6)	(7)	(8)	(9)
26. Rajasthan	93	93	372	362	20	20	100	95
27. Punjab	64	64	253	247	20	20	100	100
28. PEPSU	24	24	96	96	6	6	30	30
29. Jammu and Kashmir	96	96	384	381	28	28	140	140
30. Ajmeer	3	3	12	11	2	2	10	10
31. Delhi	3	3	12	10	18	16	90	80
32. Himachal Pradesh	5	5	20	20	2	2	10	10
33. North-West India	288	288	1152	1127	96	94	480	465
34. all India	1848	1840	7392	7255	584	582	2920	2840

TABLE (0.2) : DISTRIBUTION OF SAMPLE BLOCKS IN URBAN AREAS OF INDIA

population size-group of towns	blocks		
	s. 1	s. 2	comb.
(1)	(2)	(3)	(4)
1. cities (Bombay, Calcutta, Delhi and Madras)	62	62	124
2. big towns, population above 3,00,000	58	58	116
3. small towns, population less than 3,00,000	171	171	342
4. all India : Urban	291	291	582

Housing Condition

RURAL

TABLE (1.1): PERCENTAGE DISTRIBUTION OF HOUSEHOLDS BY NUMBER OF PERSONS
AND NUMBER OF ROOMS: ALL INDIA: RURAL

number of sample villages : 1840

number of sample households : 7255

number of persons	number of rooms							total			number of sample households
	one	two	three	four	five and six	seven and above	s. 1	s. 2	comb.		
(1)	(2)	(3)	(4)	(5)	(6)	(7)	(8)	(9)	(10)	(11)	
(a) base : all households											
1. one	5.05	1.31	0.56	0.23	0.15	0.00	5.92	8.66	7.30		
2. two	5.05	3.18	1.03	0.39	0.27	0.09	10.59	9.43	10.01		
3. three	6.40	5.02	1.71	0.54	0.42	0.03	13.87	14.37	14.12		
4. four	5.77	5.67	1.84	1.08	0.78	0.17	14.95	15.66	15.31		
5. five	5.11	6.29	2.44	1.22	0.50	0.20	15.61	15.92	15.76		
6. six	3.99	4.48	2.34	1.30	0.87	0.28	13.71	12.83	13.26		
7. seven	2.15	2.73	2.08	1.33	0.35	0.46	8.95	9.24	9.10		
8. eight	0.92	1.91	1.33	0.70	0.89	0.25	6.28	5.71	6.00		
9. nine and above	1.21	2.09	1.95	1.53	1.28	1.08	10.12	8.18	9.14		
10. all persons	35.65	32.68	15.28	8.32	5.51	2.56	100.00	100.00	100.00		
(b) base : households by number of rooms											
1. one	14.15	4.01	3.65	2.80	2.77	0.11	5.92	8.66	7.30		
2. two	14.16	9.73	6.74	4.65	4.84	3.69	10.59	9.43	10.01		
3. three	17.96	15.37	11.17	6.54	7.54	1.12	13.87	14.37	14.12		
4. four	16.18	17.35	12.06	12.94	14.21	6.63	14.95	15.66	15.31		
5. five	14.35	19.23	15.96	14.74	9.04	7.94	15.61	15.92	15.76		
6. six	11.20	13.71	15.29	15.61	15.89	11.05	13.71	12.83	13.26		
7. seven	6.03	8.35	13.62	16.04	6.30	17.82	8.95	9.24	9.10		
8. eight	2.57	5.85	8.74	8.35	16.11	9.70	6.28	5.71	6.00		
9. nine and above	3.40	6.40	12.77	18.33	23.30	41.94	10.12	8.18	9.14		
10. all persons	100.00	100.00	100.00	100.00	100.00	100.00	100.00	100.00	100.00		
11. number of sample households	2985	2372	949	540	279	129	3645	3610	7255		
(c) base : households by number of persons											
1. one	69.10	17.94	7.65	3.18	2.09	0.04	—	—	100.00	509	
2. two	51.44	30.79	10.30	3.86	2.66	0.95	—	—	100.00	791	
3. three	45.34	35.58	12.10	3.85	2.93	0.20	—	—	100.00	1076	
4. four	37.68	37.03	12.05	7.03	5.10	1.11	—	—	100.00	1215	
5. five	32.44	39.86	15.48	7.77	3.15	1.30	—	—	100.00	1202	
6. six	30.10	33.76	17.63	9.78	6.59	2.14	—	—	100.00	961	
7. seven	23.62	29.98	22.90	14.65	3.81	5.04	—	—	100.00	585	
8. eight	15.30	31.90	22.29	11.58	14.77	4.16	—	—	100.00	369	
9. nine and above	13.25	22.90	21.37	16.67	14.01	11.80	—	—	100.00	547	
10. all persons	35.65	32.68	15.28	8.32	5.51	2.56	—	—	100.00	7255	
11. s. 1	33.24	32.93	15.76	9.09	5.89	3.09	100.00	—	—	3645	
12. s. 2	38.03	32.43	14.83	7.54	5.11	2.06	—	100.00	—	3610	

National Sample Survey

TABLE (1.2): PERCENTAGE DISTRIBUTION OF HOUSEHOLDS BY NUMBER OF ROOMS
AND POPULATIONS ZONES: ALL INDIA: RURAL

number of sample villages : 1840							number of sample households : 7255			
number of rooms	population zones						all India			number of sample households
	north	east	south	west	central	north-west	s. 1	s. 2	comb.	
(1)	(2)	(3)	(4)	(5)	(6)	(7)	(8)	(9)	(10)	(11)
(a) base : all households										
1. one	4.54	9.43	8.47	3.72	6.35	3.14	33.24	38.03	35.65	
2. two	5.55	9.61	6.22	3.16	4.96	3.18	32.93	32.43	32.68	
3. three	3.40	4.02	2.66	1.34	1.90	1.96	15.76	14.83	15.28	
4. four	1.97	2.35	1.27	0.58	1.18	0.97	9.09	7.54	8.32	
5. five and six	1.66	1.72	0.81	0.12	0.58	0.62	5.89	5.11	5.51	
6. seven and above	0.72	0.93	0.51	0.04	0.14	0.22	3.09	2.06	2.56	
7. total	17.84	28.06	19.94	8.96	15.11	10.09	100.00	100.00	100.00	
(b) base : households of each population zone										
1. one	25.42	33.56	42.49	41.60	42.06	31.11	33.24	38.03	35.65	
2. two	31.13	34.26	31.13	35.26	32.81	31.61	32.92	32.43	32.68	
3. three	19.06	14.36	13.35	14.99	12.55	19.45	15.76	14.83	15.28	
4. four	11.06	8.36	6.37	6.42	7.81	9.58	9.09	7.54	8.32	
5. five and six	9.32	6.09	4.07	1.31	3.84	6.11	5.89	5.11	5.51	
6. seven and above	4.01	3.37	2.59	0.42	0.93	2.14	3.09	2.06	2.56	
7. total	100.00	100.00	100.00	100.00	100.00	100.00	100.00	100.00	100.00	
8. number of sample households	1240	1765	1329	661	1133	1127	3645	3610	7255	
(c) base : households by number of rooms										
1. one	12.72	26.42	23.77	10.46	17.82	8.81	—	—	100.00	2985
2. two	16.99	29.42	18.99	9.67	15.17	9.76	—	—	100.00	2373
3. three	22.24	26.35	17.40	8.78	12.40	12.83	—	—	100.00	949
4. four	23.74	28.22	15.29	6.92	14.20	11.63	—	—	100.00	540
5. five and six	30.25	31.08	14.76	2.14	10.56	11.21	—	—	100.00	279
6. seven and above	27.82	36.79	20.05	1.46	5.49	8.39	—	—	100.00	129
7. total	17.84	28.06	19.94	8.96	15.11	10.09	—	—	100.00	7255
8. s. 1	18.15	28.06	19.70	9.01	14.96	10.12	100.00	—	—	3645
9. s. 2	17.54	28.06	20.17	8.92	15.25	10.06	—	100.00	—	3610

TABLE (1.3) : PERCENTAGE DISTRIBUTION OF HOUSEHOLDS BY NUMBER OF ROOMS AND MONTHLY HOUSEHOLD EXPENDITURE LEVEL : ALL INDIA : RURAL

number of sample villages : 1840											number of sample households : 7255		
number of rooms	monthly household expenditure level (in rupees)										number of sample households		
	0—25	26—50	51—100	101—200	201—300	301—400	401—500	501—700	701 and above	all levels			
(1)	(2)	(3)	(4)	(5)	(6)	(7)	(8)	(9)	(10)	s. 1	s. 2	comb.	(14)
(a) base : all households													
1. one	6.81	15.38	10.72	2.39	0.33	—	—	—	0.02	33.24	38.03	35.65	
2. two	2.82	12.21	12.10	4.70	0.47	0.32	—	0.02	0.04	32.93	32.43	32.68	
3. three	0.80	3.46	6.69	3.58	0.47	0.10	0.03	0.06	0.09	15.76	14.83	15.28	
4. four	0.24	1.37	3.78	2.16	0.36	0.18	0.18	0.05	0.00	9.09	7.54	8.32	
5. five and six	0.07	0.74	2.09	1.88	0.47	0.07	0.11	0.05	0.03	5.89	5.11	5.51	
6. seven and above	0.01	0.37	0.42	0.91	0.51	0.24	0.04	0.02	0.04	3.09	2.06	2.56	
7. total	10.75	33.53	35.80	15.62	2.61	0.91	0.36	0.20	0.22	100.00	100.00	100.00	
(b) base : households of each expenditure level													
1. one	63.37	45.86	29.92	15.31	12.80	—	—	—	9.22	33.24	38.03	35.65	
2. two	26.23	36.39	33.81	30.13	17.91	35.08	—	13.76	16.28	32.93	32.43	32.68	
3. three	7.45	10.33	18.70	22.93	18.12	10.86	9.24	28.31	40.85	15.76	14.83	15.28	
4. four	2.23	4.09	10.56	13.79	13.88	19.33	49.39	23.95	0.69	9.09	7.54	8.32	
5. five and six	0.62	2.22	5.83	12.01	17.87	7.52	29.33	26.48	13.49	5.89	5.11	5.51	
6. seven and above	0.10	1.11	1.18	5.83	19.42	27.21	12.04	7.50	19.47	3.09	2.06	2.56	
7. total	100.00	100.00	100.00	100.00	100.00	100.00	100.00	100.00	100.00	100.00	100.00	100.00	
8. number of sample households	1030	2711	2470	848	122	39	13	11	11	3645	3610	7255	

TABLE (1.3) (Contd.): PERCENTAGE DISTRIBUTION OF HOUSEHOLDS BY NUMBER OF ROOMS AND MONTHLY HOUSEHOLD EXPENDITURE LEVEL: ALL INDIA: RURAL

number of sample villages : 1840

number of sample households : 7255

number of rooms	monthly household expenditure level (in rupees)										all levels			number of sample households
	0—25	26—50	51—100	101—200	201—300	301—400	401—500	501—700	701 and above	s. 1	s. 1	comb.		
(1)	(2)	(3)	(4)	(5)	(6)	(7)	(8)	(9)	(10)	(11)	(12)	(13)	(14)	
(c) base: households by number of rooms														
1. one	19.11	43.14	30.04	6.71	0.94	—	—	—	0.06	—	—	100.00	2985	
2. two	8.63	37.33	37.03	14.41	1.43	0.97	—	0.09	0.11	—	—	100.00	2373	
3. three	5.24	22.65	43.76	23.43	3.09	0.64	0.22	0.38	0.59	—	—	100.00	949	
4. four	2.88	16.50	45.48	25.93	4.36	2.11	2.13	0.59	0.02	—	—	100.00	540	
5. five and six	1.21	13.51	37.96	34.15	8.49	1.24	1.91	0.99	0.54	—	—	100.00	279	
6. seven and above	0.43	14.41	16.49	35.41	19.73	9.59	1.68	0.60	1.66	—	—	100.00	129	
7. total	10.75	33.53	35.80	15.62	2.61	0.91	0.36	0.20	0.22	—	—	100.00	7255	
8. s. 1	9.96	33.78	35.33	15.74	3.15	1.12	0.43	0.19	0.30	100.00	—	—	3645	
9. s. 2	11.53	33.27	36.27	15.51	2.08	0.69	0.29	0.22	0.14	—	100.00	—	3610	

Housing Condition

TABLE (1.4) : PERCENTAGE DISTRIBUTION OF HOUSEHOLDS BY AVERAGE NUMBER OF PERSONS PER ROOM AND POPULATION ZONES : ALL INDIA : RURAL

number of sample villages : 1840

number of sample households : 7255

average number of persons per room	population zones						all India		
	north	east	south	west	central	north-west	s. 1	s. 2	comb.
(1)	(2)	(3)	(4)	(5)	(6)	(7)	(8)	(9)	(10)
(a) base : all households									
1. below 1.0	4.29	6.30	3.25	1.01	2.52	1.60	18.59	19.38	18.97
2. 1.0 < 1.5	2.70	3.30	1.81	0.83	1.48	1.07	11.24	11.13	11.19
3. 1.5 < 2.0	4.01	5.25	3.66	1.60	2.63	2.01	19.32	19.01	19.16
4. 2.0 < 2.5	1.92	2.90	1.83	0.62	1.38	1.05	10.16	9.26	9.70
5. 2.5 < 3.0	1.97	3.54	2.88	1.46	2.14	1.30	13.93	12.66	13.29
6. 3.0 < 3.5	0.38	1.32	0.61	0.34	0.45	0.48	3.59	3.55	3.58
7. 3.5 < 4.0	0.88	1.97	1.96	0.98	1.52	0.94	8.09	8.41	8.25
8. 4.0 < 5.0	0.82	2.01	1.46	0.60	1.24	0.80	6.50	7.34	6.93
9. 5.0 and above	0.87	1.47	2.48	1.52	1.75	0.84	8.58	9.26	8.93
10. total	17.84	28.06	19.94	8.96	15.11	10.09	100.00	100.00	100.00
11. s.1	18.15	28.06	19.70	9.01	14.96	10.12	100.00	—	—
12. s. 2	17.54	28.06	20.17	8.92	15.25	10.06	—	100.00	—
(b) base : households of each zone									
1. below 1.0	24.05	22.46	16.30	11.27	16.70	15.90	18.59	19.38	18.97
2. 1.0 < 1.5	15.17	11.74	9.06	9.25	9.82	10.58	11.24	11.13	11.19
3. 1.5 < 2.0	22.48	18.69	18.33	17.88	17.40	19.96	19.32	19.01	19.16
4. 2.0 < 2.5	10.74	10.35	9.20	6.94	9.14	10.43	10.16	9.26	9.70
5. 2.5 < 3.0	11.04	12.62	14.46	16.32	14.14	12.88	13.93	12.66	13.29
6. 3.0 < 3.5	2.14	4.71	3.04	3.76	2.95	4.78	3.59	3.55	3.58
7. 3.5 < 4.0	4.91	7.04	9.84	10.99	10.06	9.28	8.09	8.41	8.25
8. 4.0 < 5.0	4.57	7.15	7.33	6.67	8.22	7.88	6.50	7.34	6.93
9. 5.0 and above	4.90	5.24	12.44	16.92	11.57	8.31	8.58	9.26	8.93
10. total	100.00	100.00	100.00	100.00	100.00	100.00	100.00	100.00	100.00
11. number of sample households	1240	1765	1329	661	1133	1127	3645	3610	7255

TABLE (1.5): PERCENTAGE DISTRIBUTION OF HOUSEHOLDS BY AVERAGE NUMBER OF PERSONS PER ROOM AND MONTHLY HOUSEHOLD EXPENDITURE LEVEL: ALL INDIA: RURAL

number of sample villages : 1840

number of sample households : 7255

average number of persons per room	monthly household expenditure level (in rupees)										all levels		
	0—25	26—50	51—100	101—200	201—300	301—400	401—500	501—700	701 and above	s. 1	s. 2	comb.	
	(1)	(2)	(3)	(4)	(5)	(6)	(7)	(8)	(9)	(10)	(11)	(12)	(13)
(a) base : all households													
1. below—1.0	5.47	6.91	4.53	1.59	0.28	0.12	—	0.01	0.06	18.59	19.38	18.97	
2. 1.0 < 1.5	0.60	3.97	4.20	2.06	0.20	0.10	0.04	—	0.02	11.24	11.13	11.19	
3. 1.5 < 2.0	2.10	6.75	6.76	2.66	0.63	0.11	0.09	0.02	0.04	19.32	19.01	19.16	
4. 2.0 < 2.5	0.26	2.45	4.39	2.02	0.25	0.21	0.04	0.07	0.01	10.16	9.26	9.70	
5. 2.5 < 3.0	1.27	5.10	4.54	1.94	0.30	0.08	0.01	0.02	0.03	13.93	12.66	13.29	
6. 3.0 < 3.5	0.02	0.57	1.54	0.92	0.33	0.07	0.05	0.08	—	3.59	3.55	3.58	
7. 3.5 < 4.0	0.48	3.27	3.05	1.17	0.21	0.03	—	—	0.04	8.09	8.41	8.25	
8. 4.0 < 5.0	0.37	2.33	2.53	1.46	0.09	0.08	0.06	—	0.01	6.50	7.34	6.93	
9. 5.0 and above	0.18	2.18	4.26	1.80	0.32	0.11	0.07	—	0.01	8.53	9.26	8.93	
10. total	10.75	33.53	35.80	15.62	2.61	0.91	0.36	0.20	0.22	100.00	100.00	100.00	
11. s. 1	9.96	33.78	35.33	15.74	3.15	1.12	0.43	0.19	0.30	100.00	—	—	
12. s. 2	11.53	33.27	36.27	15.51	2.08	0.69	0.29	0.22	0.14	—	100.00	—	

TABLE (1.5) (Contd.): PERCENTAGE DISTRIBUTION OF HOUSEHOLDS BY AVERAGE NUMBER OF PERSONS PER ROOM AND MONTHLY HOUSEHOLD EXPENDITURE LEVEL: ALL INDIA: RURAL

average number of persons per room	number of sample villages : 1840									number of sample households : 7255		
	monthly household expenditure level (in rupees)										all levels	
	0—25	26—50	51—100	101—200	201—300	301—400	401—500	501—700	701 and above	s. 1	s. 2	comb.
	(1)	(2)	(3)	(4)	(5)	(6)	(7)	(8)	(9)	(10)	(11)	(12)
(b) base: households of each expenditure levels												
1. below—1.0	50.94	20.63	12.66	10.19	10.71	12.96	—	3.65	28.22	18.59	19.38	18.97
2. 1.0 < 1.5	5.57	11.84	11.73	13.22	7.54	11.34	12.03	—	7.07	11.24	11.13	11.19
3. 1.5 < 2.0	19.47	20.13	18.87	17.06	24.31	12.40	24.37	8.42	19.10	19.32	19.01	19.16
4. 2.0 < 2.5	2.46	7.31	12.26	12.96	9.47	22.80	10.10	35.67	5.33	10.16	9.26	9.70
5. 2.5 < 3.0	11.78	15.21	12.67	12.40	11.36	8.81	2.94	13.90	16.28	13.93	12.66	13.29
6. 3.0 < 3.5	0.23	1.66	4.31	5.89	12.50	7.83	15.07	38.36	—	3.59	3.55	3.58
7. 3.5 < 4.0	4.46	9.76	8.52	7.48	8.14	3.74	—	—	16.78	8.09	8.41	8.25
8. 4.0 < 5.0	3.41	6.96	7.08	9.29	3.54	8.57	16.26	—	3.61	6.50	7.34	6.93
9. 5.0 and above	1.68	6.50	11.90	11.51	12.43	11.55	19.23	—	3.61	8.58	9.26	8.93
10. total	100.00	100.00	100.00	100.00	100.00	100.00	100.00	100.00	100.00	100.00	100.00	100.00
11. number of sample households	1030	2711	2470	848	122	39	13	11	11	3645	3610	7255

TABLE (1.6) : AVERAGE NUMBER OF PERSONS PER ROOM BY MONTHLY PER PERSON EXPENDITURE LEVEL AND NUMBER OF PERSONS IN HOUSEHOLD : ALL INDIA : RURAL

number of sample villages : 1840

number of sample households : 7255

per person expenditure level (in rupees)	number of persons in household										total		number of sample households
	one	two	three	four	five	six	seven	eight	nine and above	s. 1	s. 2	comb.	
(1)	(2)	(3)	(4)	(5)	(6)	(7)	(8)	(9)	(10)	(11)	(12)	(13)	(14)
1. 0—8	0.7	2.2	2.1	2.5	2.9	3.3	3.3	3.3	4.5	3.0	3.0	3.0	1054
2. 8—11	0.8	1.2	2.1	2.3	2.3	2.9	3.3	2.8	3.9	2.6	2.8	2.7	1482
3. 11—13	0.7	1.1	1.9	1.8	2.4	2.6	2.5	3.0	2.4	2.2	2.4	2.3	924
4. 13—15	0.8	1.2	1.7	1.8	2.3	2.4	2.4	2.8	3.0	2.2	2.2	2.2	750
5. 15—18	0.6	1.0	1.5	2.0	2.3	2.1	2.4	2.7	3.0	2.1	2.1	2.1	919
6. 18—21	0.7	1.3	1.5	1.9	1.8	2.0	2.5	2.5	2.6	2.0	2.0	2.0	652
7. 21—24	0.8	1.4	1.4	1.6	2.1	2.0	1.9	2.5	2.4	1.8	1.8	1.8	397
8. 24—28	0.8	1.2	1.1	0.8	2.1	2.8	2.1	2.6	3.0	1.4	1.8	1.6	368
9. 28—34	0.8	0.8	1.6	1.3	2.2	2.1	2.0	1.8	2.5	1.6	1.4	1.5	339
10. 34—43	0.4	0.9	1.6	1.2	2.3	1.2	3.0	1.6	2.4	1.4	1.6	1.5	176
11. 43—55	0.6	1.0	1.1	1.6	1.0	1.4	1.6	1.5	2.7	1.4	1.4	1.4	99
12. 55 and above	0.5	0.5	1.3	0.8	1.4	1.4	2.3	1.3	2.5	1.2	1.0	1.1	95
13. total s. 1	0.6	1.1	1.6	1.5	2.2	2.4	2.6	2.6	2.8	2.1	—	—	3645
14. s. 2	0.7	1.2	1.6	1.9	2.3	2.4	2.5	2.7	3.4	—	2.2	—	3610
15. comb.	0.6	1.2	1.6	1.7	2.2	2.4	2.6	2.6	3.1	—	—	2.2	7255
16. number of sample households	509	791	1076	1215	1202	961	585	369	547	3645	3610	7255	

TABLE (1.7) : PERCENTAGE DISTRIBUTION OF HOUSEHOLDS BY FLOOR SPACE (SQ. FT.) AND MONTHLY HOUSEHOLD EXPENDITURE LEVEL : ALL INDIA : RURAL

number of sample villages : 1840

number of sample households : 7255

floor space (square feet)	monthly household expenditure level (in rupees)										all levels		
	0—25	26—50	51—100	101—200	201—300	301—400	401—500	501—700	701— above	s. 1	s. 2	comb.	
	(1)	(2)	(3)	(4)	(5)	(6)	(7)	(8)	(9)	(10)	(11)	(12)	(13)
(a) base : all households													
1. 0 — 50	1.13	2.19	0.84	0.20	—	—	—	—	—	—	3.98	4.74	4.36
2. 51 — 100	2.65	4.67	2.78	0.61	0.00	0.02	0.08	—	—	—	11.04	10.59	10.81
3. 101 — 200	3.94	12.61	10.26	3.13	0.28	0.10	—	—	—	—	29.32	31.31	30.32
4. 201 — 300	1.73	5.86	7.30	2.72	0.47	0.15	0.00	0.01	0.09	0.09	18.65	18.01	18.33
5. 301 — 400	0.65	2.80	4.48	2.77	0.25	0.13	—	—	0.04	0.04	10.78	11.44	11.12
6. 401 — 500	0.15	1.75	3.01	1.07	0.25	0.03	0.06	—	—	—	6.30	6.34	6.32
7. 501 — 600	0.17	1.12	2.23	1.20	0.20	0.02	—	0.02	0.04	0.04	4.80	5.19	5.00
8. 601 — 800	0.15	0.70	1.73	1.23	0.45	0.08	0.04	—	0.02	0.02	4.53	4.28	4.40
9. 801—1000	0.04	0.60	1.20	0.79	0.16	0.05	0.07	0.09	0.09	—	3.25	2.75	3.00
10. 1000—above	0.14	1.23	1.97	1.90	0.55	0.33	0.11	0.08	0.03	0.03	7.35	5.35	6.34
11. total	10.75	33.53	35.80	15.62	2.61	0.91	0.36	0.20	0.22	0.22	100.00	100.00	100.00

Housing Condition

TABLE (1.7) (Contd.): PERCENTAGE DISTRIBUTION OF HOUSEHOLDS BY FLOOR SPACE (SQ. FT.) AND MONTHLY HOUSEHOLD EXPENDITURE LEVEL: ALL INDIA: RURAL

number of sample villages : 1840

number of sample households : 7255

floor space (square feet)	monthly household expenditure level (in rupees)										all levels		
	0—25	26—50	51—100	101—200	201—300	301—400	401—500	501—700	701— above	s. 1	s. 2	comb.	
	(1)	(2)	(3)	(4)	(5)	(6)	(7)	(8)	(9)	(10)	(11)	(12)	(13)
(b) base : households of each expenditure level													
1. 0—50	10.49	6.54	2.34	1.30	—	—	—	—	—	—	3.98	4.74	4.63
2. 51—100	24.64	13.93	7.76	3.93	0.08	2.27	22.55	—	—	—	11.04	10.59	10.81
3. 101—200	36.59	37.61	28.68	20.02	10.55	11.47	—	—	—	—	29.32	31.31	30.32
4. 201—300	16.05	17.50	20.38	17.37	18.07	16.27	0.46	6.53	40.51	18.65	18.01	18.33	
5. 301—400	6.07	8.34	12.52	17.72	9.74	14.09	—	—	16.28	10.78	11.44	11.12	
6. 401—500	1.44	5.20	8.41	6.85	9.60	3.77	14.95	—	—	6.30	6.34	6.32	
7. 501—600	1.57	3.32	6.22	7.70	7.89	1.70	—	10.02	20.46	4.80	5.19	5.00	
8. 601—800	1.44	2.09	4.84	7.89	17.13	8.86	11.57	—	7.77	4.53	4.28	4.40	
9. 801—1000	0.42	1.80	3.35	5.05	6.04	5.24	19.21	42.90	—	3.25	2.75	3.00	
10. 1001—above	1.29	3.67	5.50	12.17	20.90	36.33	31.26	40.55	14.98	7.35	5.35	6.24	
11. total	100.00	100.00	100.00	100.00	100.00	100.00	100.00	100.00	100.00	100.00	100.00	100.00	100.00..
12. number of sample households	1030	2711	2470	848	122	39	13	11	11	3645	3610	7255	

TABLE (1.7) (Contd.): PERCENTAGE DISTRIBUTION OF HOUSEHOLDS BY FLOOR SPACE (SQ. FT.) AND MONTHLY HOUSEHOLD EXPENDITURE LEVEL: ALL INDIA: RURAL

number of sample villages : 1840		number of sample households : 7255												
floor space (square feet)	monthly household expenditure level (in rupees)										all levels			number of sample house- holds
	0—25	26—50	51—100	101— 200	201— 300	301— 400	401— 500	501— 700	701— above	s. 1	s. 2	comb.		
(1)	(2)	(3)	(4)	(5)	(6)	(7)	(8)	(9)	(10)	(11)	(12)	(13)	(14)	
(c) base : households under each floor space group														
1. 0 — 50	25.85	50.28	19.22	4.65	—	—	—	—	—	—	—	100.00	326	
2. 51 — 100	24.49	43.18	25.69	5.68	0.02	0.19	0.75	—	—	—	—	100.00	953	
3. 101 — 200	12.97	41.60	33.86	10.32	0.91	0.34	—	—	—	—	—	100.00	2409	
4. 201 — 300	9.42	32.01	39.82	14.81	2.58	0.80	0.01	0.07	0.48	—	—	100.00	1347	
5. 301 — 400	5.87	25.15	40.31	24.91	2.29	1.15	—	—	0.32	—	—	100.00	720	
6. 401 — 500	2.45	27.59	47.65	16.95	3.97	0.54	0.85	—	—	—	—	100.00	391	
7. 501 — 600	3.38	22.27	44.55	24.06	4.12	0.31	—	0.41	0.90	—	—	100.00	313	
8. 601 — 800	3.52	15.87	39.29	28.01	10.16	1.82	0.94	—	0.39	—	—	100.00	273	
9. 801—1000	1.51	20.12	39.98	26.31	5.26	1.58	2.30	2.94	—	—	—	100.00	187	
10. 1001—above	2.18	19.40	31.05	29.97	8.60	5.19	1.77	1.32	0.52	—	—	100.00	336	
11. total	10.75	33.53	35.80	15.62	2.61	0.91	0.36	0.20	0.22	—	—	100.00	7255	
12. s. 1	9.96	33.78	35.33	15.74	3.15	1.12	0.43	0.19	0.30	100.00	—	—	3645	
13. s. 2	11.53	33.27	36.27	15.51	2.08	0.69	0.29	0.22	0.14	—	100.00	—	3610	

National Sample Survey

TABLE (1.8): PERCENTAGE DISTRIBUTION OF HOUSEHOLDS BY FLOOR SPACE (SQ.FT.)
PER PERSON AND POPULATION ZONES: ALL INDIA: RURAL

		population zones						all India			number of sample house- holds
floor space (square feet) per person		north	east	south	west	central	north- west	s. 1	s.2	comb.	
(1)		(2)	(3)	(4)	(5)	(6)	(7)	(8)	(9)	(10)	(11)
		(a) base : all households									
1.	0—26	2.66	4.74	4.15	1.72	3.91	1.30	18.71	18.25	18.48	
2.	26—50	5.02	9.13	5.35	2.43	4.44	3.26	29.45	29.81	29.63	
3.	51—75	2.80	5.38	3.66	1.21	2.57	2.14	17.66	17.85	17.76	
4.	76—100	1.53	2.80	2.22	1.32	1.07	0.96	9.75	10.05	9.90	
5.	101—150	2.10	3.72	1.53	1.00	1.14	1.08	10.30	10.84	10.57	
6.	151—200	1.02	1.00	1.13	0.57	0.91	0.61	5.08	5.04	5.24	
7.	201—250	0.64	0.68	0.63	0.16	0.47	0.14	2.82	2.61	2.72	
8.	251—300	0.37	0.20	0.36	0.19	0.14	0.23	1.80	1.19	1.49	
9.	301—350	0.40	0.15	0.23	—	0.06	0.03	1.04	0.71	0.87	
10.	351—400	0.35	0.10	0.32	0.14	0.07	0.12	1.02	1.18	1.10	
11.	401 and above	0.95	0.16	0.36	0.22	0.33	0.22	2.37	2.11	2.24	
12.	total	17.84	28.06	19.94	8.96	15.11	10.09	100.00	100.00	100.00	
		(b) base : households of each zone									
1.	0—26	14.92	16.88	20.82	19.13	25.89	12.92	18.71	18.25	18.48	
2.	26—50	28.14	32.52	26.84	27.12	29.38	32.33	29.45	29.81	29.63	
3.	51—75	15.69	19.16	18.35	13.49	17.00	21.23	17.66	17.85	17.76	
4.	76—100	8.60	9.97	11.13	14.78	7.05	9.52	9.75	10.05	9.90	
5.	101—150	11.79	13.27	7.68	11.08	7.56	10.68	10.30	10.84	10.57	
6.	151—200	5.69	3.58	5.65	6.37	6.02	6.09	5.08	5.40	5.24	
7.	201—250	3.61	2.40	3.16	1.81	3.11	1.36	2.82	2.61	2.72	
8.	251—300	2.08	0.73	1.78	2.17	0.95	2.21	1.80	1.19	1.49	
9.	301—350	2.22	0.55	1.17	—	0.38	0.34	1.04	0.71	0.87	
10.	351—400	1.96	0.36	1.59	1.60	0.46	1.20	1.02	1.18	1.10	
11.	401 and above	5.30	0.58	1.83	2.45	2.20	2.12	2.37	2.11	2.24	
12.	total	100.00	100.00	100.00	100.00	100.00	100.00	100.00	100.00	100.00	
13.	number of sample households	1240	1765	1329	661	1133	1127	3645	3610	7255	
		(c) base : households under each floor space group									
1.	0—26	14.40	25.63	22.47	9.28	21.17	7.05	—	—	100.00	1422
2.	26—50	16.95	30.80	18.06	8.20	14.98	11.01	—	—	100.00	2288
3.	51—75	15.77	30.29	20.60	6.81	14.47	12.06	—	—	100.00	1290
4.	76—100	15.50	28.28	22.40	13.37	10.75	9.70	—	—	100.00	741
5.	101—150	19.89	35.23	14.48	9.39	10.81	10.20	—	—	100.00	693
6.	151—200	19.37	19.15	21.50	10.90	17.35	11.73	—	—	100.00	330
7.	201—250	23.71	24.79	23.22	5.96	17.28	5.04	—	—	100.00	152
8.	251—300	24.80	13.77	23.78	13.04	9.65	14.96	—	—	100.00	102
9.	301—350	45.30	17.54	26.64	—	6.64	3.88	—	—	100.00	40
10.	351—400	31.79	9.10	28.76	13.04	6.35	10.96	—	—	100.00	70
11.	401 and above	42.23	7.26	16.29	9.80	14.86	9.56	—	—	100.00	127
12.	total	17.84	28.06	19.94	8.96	15.11	10.09	—	—	100.00	7255
13.	s. 1	18.15	28.06	19.70	9.01	14.96	10.12	100.00	—	—	3645
14.	s. 2	17.54	28.06	20.17	8.92	15.25	10.06	—	100.00	—	3610

Housing Condition

TABLE (1.9): PERCENTAGE DISTRIBUTION OF HOUSEHOLDS BY FLOOR SPACE (SQ. FT.)
AND POPULATION ZONES: ALL INDIA: RURAL

		population zones						all India			number of sam- ple house- holds
floor space (square feet)	north	east	south	west	central	north- west	s. 1	s. 2	comb.		
(1)	(2)	(3)	(4)	(5)	(6)	(7)	(8)	(9)	(10)	(11)	
(a) base : all households											
1. 0 — 50	0.78	1.24	0.93	0.18	1.03	0.20	3.98	4.74	4.36		
2. 51 — 100	1.56	2.70	2.48	1.07	2.23	0.77	11.04	10.59	10.81		
3. 101 — 200	4.47	9.70	5.74	2.51	4.88	3.02	29.32	31.31	30.32		
4. 201 — 300	2.93	5.78	3.72	1.45	2.73	1.72	18.65	18.01	18.33		
5. 301 — 400	2.26	2.97	2.03	0.87	1.36	1.63	10.78	11.44	11.12		
6. 401 — 500	1.22	1.88	1.20	0.67	0.75	0.60	6.30	6.34	6.32		
7. 501 — 600	1.11	0.98	1.08	0.62	0.63	0.58	4.80	5.19	5.00		
8. 601 — 800	1.01	1.03	0.67	0.59	0.42	0.68	4.53	4.28	4.40		
9. 801 — 1000	0.69	0.72	0.51	0.37	0.45	0.26	3.25	2.75	3.00		
10. 1000 and above	1.81	1.06	1.58	0.63	0.63	0.63	7.35	5.35	6.34		
11. total	17.84	28.06	19.94	8.96	15.11	10.09	100.00	100.00	100.00		
(b) base : households of each population zone											
1. 0 — 50	4.39	4.42	4.63	2.04	6.83	1.96	3.98	4.74	4.36		
2. 51 — 100	8.74	9.62	12.41	12.00	14.80	7.64	11.04	10.59	10.81		
3. 101 — 200	25.07	34.59	28.78	28.01	32.27	29.88	29.32	31.31	30.32		
4. 201 — 300	16.41	20.59	18.65	16.15	18.08	17.07	18.65	18.01	18.33		
5. 301 — 400	12.66	10.58	10.19	9.71	8.99	16.11	10.78	11.44	11.12		
6. 401 — 500	6.81	6.69	6.03	7.48	4.95	6.00	6.30	6.34	6.32		
7. 501 — 600	6.19	3.50	5.43	6.93	4.16	5.76	4.80	5.19	5.00		
8. 601 — 800	5.68	3.66	3.38	6.61	2.76	6.76	4.53	4.28	4.40		
9. 801 — 1000	3.90	2.56	2.56	4.10	2.96	2.57	3.25	2.75	3.00		
10. 1000 and above	10.15	3.79	7.94	6.97	4.20	6.25	7.35	5.35	6.34		
11. total	100.00	100.00	100.00	100.00	100.00	100.00	100.00	100.00	100.00		
12. number of sample households	1240	1765	1329	661	1133	1127	3645	3610	7255		
(c) base : households of each floor space group											
1. 0 — 50	17.98	28.44	21.13	4.19	23.67	4.54	—	—	100.00	326	
2. 51 — 100	14.42	24.96	22.87	9.94	20.68	7.13	—	—	100.00	953	
3. 101 — 200	14.75	32.01	18.93	8.28	16.08	9.95	—	—	100.00	2409	
4. 201 — 300	15.97	31.53	20.30	7.90	14.90	9.40	—	—	100.00	1347	
5. 301 — 400	20.31	26.72	18.29	7.83	12.23	14.62	—	—	100.00	720	
6. 401 — 500	19.23	29.72	19.01	10.62	11.83	9.59	—	—	100.00	391	
7. 501 — 600	22.09	19.66	21.64	12.42	12.57	11.62	—	—	100.00	313	
8. 601 — 800	23.02	23.30	15.30	13.44	9.46	15.48	—	—	100.00	273	
9. 801 — 1000	23.23	23.94	17.03	12.24	14.90	8.66	—	—	100.00	187	
10. 1000 and above	28.54	16.76	24.94	9.84	9.99	9.93	—	—	100.00	336	
11. total	17.84	28.06	19.94	8.96	15.11	10.09	—	—	100.00	7255	
12. s. 1	18.15	28.06	19.70	9.01	14.96	10.12	100.00	—	—	3645	
13. s. 2	17.54	28.06	20.17	8.92	15.25	10.06	—	100.00	—	3610	

TABLE (1.10) : PERCENTAGE DISTRIBUTION OF HOUSEHOLDS BY FLOOR SPACE (SQ. FT.) PER PERSON AND NUMBER OF PERSONS IN HOUSEHOLD : ALL INDIA : RURAL

number of sample villages : 1840

number of sample households : 7255

floor space (square feet) per person	number of persons in households									total		
	one	two	three	four	five	six	seven	eight	nine and above	s. 1	s. 2	comb.
(1)	(2)	(3)	(4)	(5)	(6)	(7)	(8)	(9)	(10)	(11)	(12)	(13)
(a) base : all households												
1. 0—25	0.55	0.74	1.39	2.43	3.49	3.41	2.39	1.92	2.16	18.71	18.25	18.48
2. 26—50	0.53	1.86	3.99	5.16	5.41	4.43	2.94	2.02	3.29	29.45	29.81	29.63
3. 51—75	0.61	1.85	2.79	2.87	2.74	2.31	1.91	0.97	1.71	17.66	17.85	17.76
4. 76—100	0.85	1.65	1.89	1.36	1.35	1.06	0.54	0.43	0.77	9.75	10.05	9.90
5. 101—150	1.89	1.30	1.85	1.64	1.27	1.02	0.76	0.23	0.61	10.30	10.84	10.57
6. 151—200	0.91	1.04	0.93	0.50	0.63	0.54	0.24	0.12	0.33	5.08	5.40	5.24
7. 201—250	0.53	0.61	0.22	0.53	0.49	0.05	0.06	0.12	0.11	2.82	2.61	2.72
8. 251—300	0.31	0.27	0.12	0.26	0.12	0.19	0.05	0.09	0.08	1.80	1.19	1.49
9. 301 and above	1.12	0.69	0.94	0.56	0.26	0.25	0.21	0.10	0.08	4.43	4.00	4.21
10. total	7.30	10.01	14.12	15.31	15.76	13.26	9.10	6.00	9.14	100.00	100.00	100.00

TABLE (1.10) (Contd.): PERCENTAGE DISTRIBUTION OF HOUSEHOLDS BY FLOOR SPACE (SQ. FT.) PER PERSON AND NUMBER OF PERSONS IN HOUSEHOLD : ALL INDIA : RURAL

number of sample villages : 1840

number of sample households : 7255

floor space (square feet) per person	number of persons in households										total	
	one	two	three	four	five	six	seven	eight	nine and above	s. 1	s. 2	comb.
	(1)	(2)	(3)	(4)	(5)	(6)	(7)	(8)	(9)	(10)	(11)	(12)
(b) base : households by number of persons in household												
1. 0—25	7.58	7.39	9.83	15.93	22.13	25.70	26.27	31.97	23.58	18.71	18.25	18.48
2. 26—50	7.22	18.55	28.17	33.71	34.33	33.46	32.38	33.71	36.01	29.45	29.81	29.63
3. 51—75	8.35	18.46	19.84	18.71	17.37	17.38	21.00	16.15	18.71	17.66	17.85	17.76
4. 76—100	11.70	16.51	13.44	8.80	8.54	8.05	5.88	7.15	8.43	9.75	10.05	9.90
5. 101—150	25.75	13.12	13.08	10.74	8.08	7.62	8.39	3.84	6.65	10.30	10.84	10.57
6. 151—200	12.45	10.40	6.59	3.23	4.02	4.04	2.63	2.03	3.67	5.08	5.40	5.24
7. 201—250	7.28	6.05	1.55	3.49	3.11	0.39	0.61	1.99	1.20	2.82	2.61	2.72
8. 251—300	4.30	2.67	0.84	1.71	0.75	1.41	0.56	1.54	0.90	1.80	1.19	1.49
9. 301 and above	15.37	6.85	6.66	3.68	1.67	1.95	2.28	1.62	0.85	4.43	4.00	4.21
10. total	100.00	100.00	100.00	100.00	100.00	100.00	100.00	100.00	100.00	100.00	100.00	100.00
11. number of sample households	509	791	1076	1215	1202	961	585	369	547	3645	3610	7255

TABLE (1.10) (Contd.): PERCENTAGE DISTRIBUTION OF HOUSEHOLDS BY FLOOR SPACE (SQ. FT.) PER PERSON AND NUMBER OF PERSONS IN HOUSEHOLD : ALL INDIA : RURAL¹

		number of sample villages : 1840									number of sample households : 7255			number of sample households
floor space (square feet) per person		number of persons in households									total			
		one	two	three	four	five	six	seven	eight	nine and above	s. 1	s. 2	comb.	
(1)		(2)	(3)	(4)	(5)	(6)	(7)	(8)	(9)	(10)	(11)	(12)	(13)	
(c) base : households of each floor space group														
1.	0—25	2.99	4.00	7.51	13.20	18.88	18.45	12.94	10.37	11.66	—	—	100.00	1422
2.	26—50	1.78	6.26	13.43	17.42	18.26	14.98	9.94	6.82	11.11	—	—	100.00	2288
3.	51—75	3.43	10.40	15.78	16.13	15.43	12.99	10.76	5.45	9.63	—	—	100.00	1290
4.	76—100	8.62	16.69	19.17	13.61	13.59	10.79	5.41	4.33	7.79	—	—	100.00	741
5.	101—150	17.79	12.42	17.47	15.55	12.06	9.56	7.22	2.18	5.75	—	—	100.00	693
6.	151—200	17.34	19.85	17.75	9.44	12.10	10.22	4.57	2.32	6.41	—	—	100.00	330
7.	201—250	19.56	22.30	8.04	19.66	18.07	1.90	2.05	4.39	4.03	—	—	100.00	152
8.	251—300	21.03	17.88	7.91	17.59	7.91	12.54	3.42	6.19	5.53	—	—	100.00	102
9.	301 and above	26.62	16.26	22.32	13.35	6.26	6.13	4.92	2.31	1.83	—	—	100.00	237
10.	total	7.30	10.01	14.12	15.31	15.76	13.26	9.10	6.00	9.14	—	—	100.00	7255
11.	s. 1	5.92	10.59	13.87	14.95	15.61	13.71	8.95	6.28	10.12	100.00	—	—	3645
12.	s. 2	8.66	9.43	14.37	15.66	15.92	12.83	9.24	5.71	8.18	—	100.00	—	3610

TABLE (1.11) : PERCENTAGE DISTRIBUTION OF HOUSEHOLDS BY MONTHLY HOUSEHOLD EXPENDITURE LEVEL AND FLOOR SPACE (SQ. FT.) PER PERSON : ALL INDIA : RURAL

number of sample villages : 1840

number of sample households : 7255

monthly household expenditure level (in rupees)	floor space (square feet) per person											total		
	below 26	26—50	51—75	76— 100	101— 150	151— 200	201— 250	251— 300	301— 350	351— 400	401— above	s. 1	s. 2	comb.
	(2)	(3)	(4)	(5)	(6)	(7)	(8)	(9)	(10)	(11)	(12)	(13)	(14)	(15)
(a) base : all households														
1. 0—25	1.38	2.71	1.60	1.43	1.47	0.81	0.46	0.26	0.20	0.28	0.15	9.96	11.53	10.75
2. 26—50	7.27	10.03	5.24	3.27	3.31	1.50	1.02	0.34	0.26	0.35	0.94	33.78	33.27	33.53
3. 51—100	6.65	11.10	6.67	3.12	4.02	1.82	0.77	0.43	0.33	0.25	0.64	35.33	36.27	35.80
4. 101—200	2.68	4.53	3.24	1.72	1.35	0.71	0.33	0.35	0.06	0.16	0.49	15.74	15.51	15.62
5. 201—300	0.23	0.79	0.73	0.23	0.21	0.24	0.05	0.07	—	0.06	—	3.15	2.08	2.61
6. 301—400	0.18	0.28	0.18	0.04	0.09	0.04	0.04	0.02	0.02	—	0.02	1.12	0.69	0.91
7. 401—500	0.08	0.10	0.04	0.03	0.07	—	0.04	—	—	—	—	0.43	0.29	0.36
8. 501—700	—	0.03	—	0.06	0.02	0.08	0.01	—	—	—	—	0.19	0.22	0.20
9. 701 and above	0.01	0.06	0.06	0.00	0.03	0.04	—	0.02	—	—	—	0.30	0.14	0.22
10. all levels	18.48	29.63	17.76	9.90	10.57	5.24	2.72	1.49	0.87	1.10	2.24	100.00	100.00	100.00

TABLE (1.11) (Contd.) : PERCENTAGE DISTRIBUTION OF HOUSEHOLDS BY MONTHLY HOUSEHOLD EXPENDITURE LEVEL AND FLOOR SPACE (SQ. FT.) PER PERSON : ALL INDIA : RURAL

number of sample villages : 1840

number of sample households : 7255

monthly household expenditure level (in rupees)	floor space (square feet) per person												total		
	below 26	26—50	51—75	76— 100	101— 150	151— 200	201— 250	251— 300	301— 350	351 400	401— above	s. 1	s. 2	comb.	
	(2)	(3)	(4)	(5)	(6)	(7)	(8)	(9)	(10)	(11)	(12)	(13)	(14)	(15)	
(b) base : households under each floor space group															
1. 0—25	7.48	9.14	8.98	14.41	13.95	15.46	16.75	17.79	22.94	25.29	6.81	9.96	11.53	10.75	
2. 26—56	39.35	33.86	29.53	33.02	31.30	28.50	37.46	22.52	29.29	32.12	42.00	33.78	33.27	33.53	
3. 51—100	35.97	37.45	37.59	31.54	37.99	34.74	28.23	29.13	38.02	22.82	28.33	35.33	36.27	35.80	
4. 101—200	14.51	15.31	18.23	17.36	12.76	13.58	12.16	23.72	7.41	14.15	21.86	15.74	15.51	15.62	
5. 201—300	1.25	2.67	4.11	2.34	1.96	4.64	1.88	4.48	—	5.62	—	3.15	2.08	2.61	
6. 301—400	0.94	0.94	1.00	0.40	0.90	0.67	1.65	1.22	2.34	—	1.00	1.12	0.69	0.91	
7. 401—500	0.44	0.31	0.23	0.31	0.65	—	1.59	—	—	—	—	0.43	0.29	0.36	
8. 501—700	—	0.12	—	0.60	0.22	1.55	0.28	—	—	—	—	0.19	0.22	0.20	
9. 701 and above	0.06	0.20	0.33	0.02	0.27	0.86	—	1.14	—	—	—	0.30	0.14	0.22	
10. all levels	100.00	100.00	100.00	100.00	100.00	100.00	100.00	100.00	100.00	100.00	100.00	100.00	100.00	100.00	
11. number of sample persons	1422	2288	1290	741	693	330	152	102	40	70	127	3645	3610	7255	

TABLE (I.11) (Contd.): PERCENTAGE DISTRIBUTION OF HOUSEHOLDS BY MONTHLY HOUSEHOLD EXPENDITURE LEVEL AND FLOOR SPACE (SQ. FT.) PER PERSON : ALL INDIA : RURAL

number of sample villages : 1840

number of sample households : 7255

monthly house- hold expenditure level (in rupees)	floor space (square feet) Per person											total			number of sample persons
	below 26	26—50	51—75	76— 100	101— 150	151— 200	201— 250	251— 300	301— 350	351— 400	401— above	s. 1	s. 2	comb.	
	(2)	(3)	(4)	(5)	(6)	(7)	(8)	(9)	(10)	(11)	(12)	(13)	(14)	(15)	
(c) base : monthly per person expenditure level															
1. 0—25	12.86	25.21	14.84	13.27	13.71	7.54	4.23	2.47	1.86	2.59	1.42	—	—	100.00	1030
2. 26—50	21.69	29.93	15.64	9.75	9.87	4.46	3.03	1.00	0.76	1.06	2.81	—	—	100.00	2711
3. 51—100	18.57	31.00	18.65	8.72	11.22	5.09	2.14	1.21	0.93	0.70	1.77	—	—	100.00	2470
4. 101—200	17.17	29.02	20.71	11.00	8.63	4.56	2.11	2.26	0.41	1.00	3.13	—	—	100.00	848
5. 201—300	8.82	30.29	27.92	8.87	7.91	9.31	1.95	2.56	—	2.37	—	—	—	100.00	122
6. 301—400	19.23	30.81	19.53	4.35	10.52	3.88	4.95	2.01	2.25	—	2.47	—	—	100.00	39
7. 401—500	22.55	25.96	11.54	8.69	19.23	—	12.03	—	—	—	—	—	—	100.00	13
8. 501—700	—	16.56	—	29.13	11.13	39.53	3.65	—	—	—	—	—	—	100.00	11
9. 701 and above	4.64	26.65	26.96	0.69	12.84	20.46	7.76	—	—	—	—	—	—	100.00	11
10. all levels	18.48	29.63	17.76	9.90	10.57	5.24	2.72	1.49	0.87	1.10	2.24	—	—	100.00	7255
11. s. 1	18.71	29.45	17.66	9.75	10.30	5.08	2.82	1.80	1.04	1.02	2.37	100.00	—	—	3645
12. s. 2	18.25	29.81	17.85	10.05	10.84	5.40	2.61	1.19	0.71	1.18	2.11	—	100.00	—	3610

TABLE (1.12) : PERCENTAGE DISTRIBUTION OF HOUSEHOLDS BY MONTHLY PER PERSON EXPENDITURE LEVEL AND FLOOR SPACE (SQ. FT.) PER PERSON : ALL INDIA : RURAL

number of sample villages : 1840		number of sample households : 7255										
monthly per person expenditure level (in rupees)	floor space (square feet) per person											
	0—25	26—50	51—75	76—100	101—150	151—200	201—250	251—300	301 and above	total		
	(1)	(2)	(3)	(4)	(5)	(6)	(7)	(8)	(9)	(10)	s. 1 (11)	s. 2 (12)
(a) base : all households												
1. 0—8	3.92	4.19	1.53	0.51	0.32	0.36	0.13	0.00	0.05	9.96	12.05	11.01
2. 8—11	4.63	6.26	2.78	1.35	0.89	0.49	0.28	0.19	0.20	18.14	16.02	17.07
3. 11—13	2.35	4.29	2.44	1.35	1.18	0.34	0.24	0.10	0.48	12.97	12.56	12.77
4. 13—15	2.05	2.78	2.22	0.90	1.47	0.52	0.26	0.08	0.33	10.70	10.52	10.61
5. 15—18	1.70	4.27	2.77	1.66	1.41	0.84	0.37	0.10	0.35	13.17	13.77	13.47
6. 18—21	1.23	2.61	2.02	0.98	1.21	0.54	0.36	0.22	0.38	9.15	9.94	9.55
7. 21—24	0.83	1.50	1.25	1.05	0.83	0.30	0.22	0.18	0.23	6.96	5.82	6.39
8. 24—28	0.63	1.30	0.96	0.85	1.20	0.39	0.14	0.11	0.51	6.32	5.87	6.09
9. 28—34	0.47	1.15	0.90	0.47	1.38	0.41	0.31	0.23	0.67	5.52	6.46	5.99
10. 34—43	0.34	0.68	0.42	0.21	0.26	0.46	0.16	0.12	0.46	2.97	3.25	3.11
11. 43—55	0.19	0.45	0.25	0.47	0.21	0.24	0.04	0.13	0.18	2.23	2.09	2.16
12. 55 and above	0.14	0.15	0.22	0.10	0.21	0.35	0.21	0.03	0.37	1.91	1.65	1.78
13. all levels	18.48	29.63	17.76	9.90	10.57	5.24	2.72	1.49	4.21	100.00	100.00	100.00

TABLE (1.12) (Contd.): PERCENTAGE DISTRIBUTION OF HOUSEHOLDS BY MONTHLY PER PERSON EXPENDITURE LEVEL AND FLOOR SPACE (SQ. FT.) PER PERSON : ALL INDIA : RURAL

number of sample villages : 1840

number of sample households : 7255

monthly per person expenditure level (in rupees)	floor space (square feet) per person										total	
	0—25	26—50	51—75	76—100	101—150	151—200	201—250	251—300	301 and above	s. 1	s. 3	comb.
	(1)	(2)	(3)	(4)	(5)	(6)	(7)	(8)	(9)	(10)	(11)	(12)
(b) base : households under each floor space group												
1. 0—8	21.24	14.13	8.59	5.10	3.06	6.89	4.86	0.14	1.27	9.96	12.05	11.01
2. 8—11	25.07	21.10	15.68	13.59	8.43	9.38	10.39	13.07	4.67	18.14	16.02	17.07
3. 11—13	12.72	14.46	13.74	13.62	11.18	6.47	8.90	6.45	11.48	12.97	12.56	12.77
4. 13—15	11.08	9.39	12.51	9.14	13.94	9.84	9.47	5.51	7.73	10.70	10.52	10.61
5. 15—18	9.17	14.46	15.61	16.74	13.29	16.00	13.53	6.74	8.37	13.17	13.77	13.47
6. 18—21	6.65	8.77	11.40	9.93	11.48	10.28	13.28	14.79	9.04	9.15	9.94	9.55
7. 21—24	4.49	5.06	7.03	10.61	7.81	5.82	8.03	12.34	5.36	6.96	5.82	6.39
8. 24—28	3.43	4.39	5.38	8.62	11.34	7.52	5.12	7.32	12.01	6.32	5.87	6.09
9. 28—34	2.55	3.90	5.08	4.77	13.09	7.79	11.18	15.06	15.93	5.52	6.46	5.99
10. 34—43	1.82	2.28	2.34	2.13	2.47	8.81	6.03	8.09	11.03	2.97	3.25	3.11
11. 43—55	1.01	1.58	1.38	4.71	1.97	4.56	1.50	8.43	4.30	2.23	2.09	2.16
12. 55 and above	0.77	0.48	1.26	1.04	1.94	6.64	7.71	2.06	8.81	1.91	1.65	1.78
13. all levels	100.00	100.00	100.00	100.00	100.00	100.00	100.00	100.00	100.00	100.00	100.00	100.00
14. number of sample households	1422	2288	1290	741	693	330	152	102	237	3645	3610	7255

TABLE (I.12) (Contd.): PERCENTAGE DISTRIBUTION OF HOUSEHOLDS BY MONTHLY PER PERSON EXPENDITURE LEVEL AND FLOOR SPACE (SQ. FT.) PER PERSON: ALL INDIA: RURAL

number of sample villages : 1840

number of sample households : 7255

monthly per person expenditure level (in rupees)	floor space (square feet) per person									total			number of sample house- holds
	0—25	26—50	51—75	76— 100	101— 150	151— 200	201— 250	251— 300	301 and above	s. 1	s. 2	comb.	
(1)	(2)	(3)	(4)	(5)	(6)	(7)	(8)	(9)	(10)	(11)	(12)	(13)	(14)
(c) base : monthly per person expenditure level													
1. 0—8	35.63	38.02	13.85	4.58	2.93	3.28	1.20	0.02	0.49	—	—	100.00	1054
2. 8—11	27.15	36.62	16.31	7.88	5.22	2.88	1.65	1.14	1.15	—	—	100.00	1482
3. 11—13	18.41	33.56	19.12	10.56	9.26	2.66	1.89	0.75	3.79	—	—	100.00	924
4. 13—15	19.30	26.23	20.93	8.53	13.89	4.86	2.42	0.77	3.07	—	—	100.00	750
5. 15—18	12.58	31.80	20.57	12.30	10.43	6.22	2.73	0.75	2.62	—	—	100.00	919
6. 18—21	12.87	27.21	21.19	10.30	12.71	5.64	3.78	2.31	3.99	—	—	100.00	652
7. 21—24	13.00	23.48	19.54	16.44	12.93	4.78	3.41	2.88	3.54	—	—	100.00	397
8. 24—28	10.41	21.37	15.69	14.01	19.67	6.47	2.28	1.79	8.31	—	—	100.00	368
9. 28—34	7.86	19.26	15.06	7.89	23.08	6.82	5.07	3.75	11.21	—	—	100.00	339
10. 34—43	10.84	21.68	13.35	6.79	8.40	14.85	5.26	3.88	14.95	—	—	100.00	176
11. 43—55	8.63	21.71	11.32	21.58	9.63	11.05	1.88	5.82	8.38	—	—	100.00	99
12. 55 and above	7.97	8.09	12.58	5.80	11.55	19.60	11.78	1.73	20.90	—	—	100.00	95
13. all levels	18.48	29.63	17.76	9.90	10.57	5.24	2.72	1.49	4.21	—	—	100.00	7255
14. s. 1	18.71	29.45	17.66	9.75	10.30	5.08	2.82	1.80	4.43	100.00	—	—	3645
15. s. 2	18.25	29.81	17.85	10.05	10.84	5.40	2.61	1.19	4.00	—	100.00	—	3610

TABLE (1.13) : AVERAGE FLOOR SPACE (SQ. FT.) PER PERSON BY MONTHLY PER PERSON EXPENDITURE LEVEL AND NUMBER OF PERSONS IN HOUSEHOLD : ALL INDIA : RURAL

number of sample villages : 1840

number of sample households : 7255

monthly per person expenditure level (in rupees)	number of persons in household										total			number of sample house- holds
	one	two	three	four	five	six	seven	eight	nine and above	s. 1	s.2	comb.		
	(1)	(2)	(3)	(4)	(5)	(6)	(7)	(8)	(9)	(10)	(11)	(12)	(13)	
1. 0—8	146.5	41.5	60.5	51.8	39.2	41.1	34.6	37.2	47.1	44.0	42.0	43.0	1054	
2. 8—11	110.0	97.7	71.1	59.2	57.1	52.1	48.7	44.1	43.2	54.0	52.9	53.4	1482	
3. 11—13	170.0	136.3	87.0	72.9	71.4	56.7	90.9	57.3	78.4	72.8	76.4	74.6	924	
4. 13—15	198.0	91.2	109.9	83.7	56.8	62.8	67.4	59.2	89.3	75.2	77.3	76.2	750	
5. 15—18	194.4	104.3	89.2	81.4	74.6	74.2	56.1	55.8	55.5	71.7	70.1	70.9	919	
6. 18—21	176.0	142.1	113.0	112.7	85.4	67.0	68.4	55.8	56.1	89.7	75.8	82.8	652	
7. 21—24	155.6	88.6	110.2	101.5	69.2	54.4	90.2	96.1	91.4	89.2	88.3	88.8	397	
8. 24—28	138.7	142.6	120.3	147.3	99.0	182.6	71.8	86.1	65.2	107.7	109.5	108.6	368	
9. 28—34	242.9	261.0	115.6	224.9	83.9	150.0	144.9	93.9	82.2	167.5	113.8	140.6	339	
10. 34—43	342.2	163.3	199.6	161.0	164.2	238.4	44.4	68.6	86.6	217.8	129.7	173.8	176	
11. 43—55	221.3	124.7	120.8	86.2	127.6	95.4	117.2	111.4	76.5	139.4	173.0	156.2	99	
12. 55—above	220.1	197.8	215.3	372.5	143.1	317.7	92.0	70.5	34.1	146.8	183.3	165.0	95	
13. total s. 1	216.2	139.5	93.7	97.1	66.4	80.4	62.9	59.9	71.7	80.8	—	—	3645	
14. s. 2	167.5	115.4	107.9	87.2	70.1	66.4	69.2	59.3	54.1	—	84.6	—	3610	
15. comb.	191.8	127.4	100.8	92.2	68.2	73.4	66.0	59.6	62.9	—	—	82.7	7255	
16. number of sample households	509	791	1076	1215	1202	961	585	369	547	3645	3610	7255	3610	

TABLE (I.13A) : CUMULATIVE PERCENTAGE OF POPULATION, FLOOR SPACE AND NUMBER OF ROOMS BY SUB-SAMPLES :
ALL INDIA : RURAL

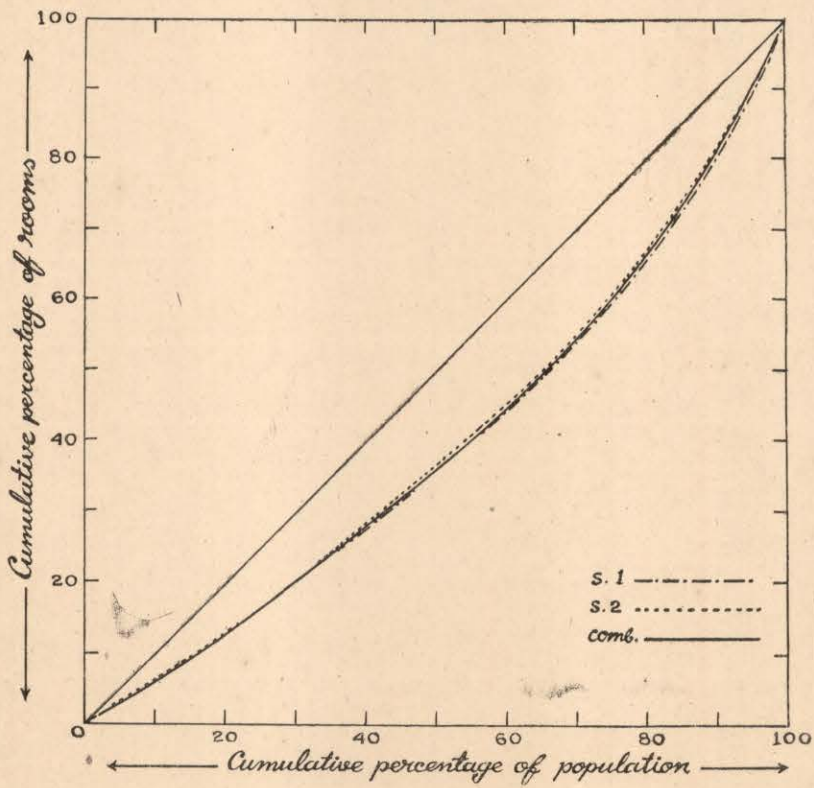
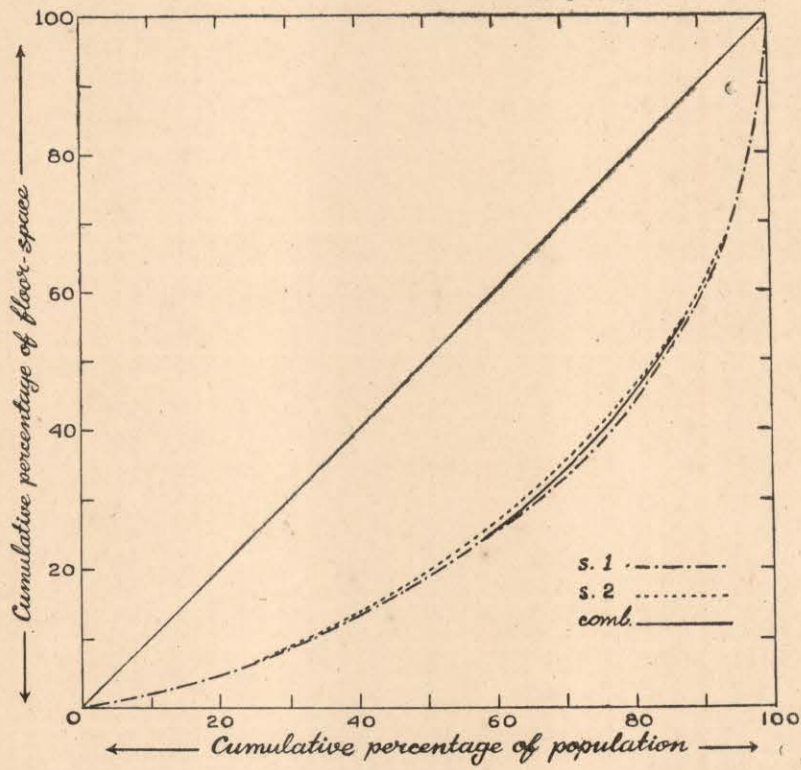
number of sample villages : 1840

number of sample households : 7255

percentiles (of house- holds ¹)	number of sample households			cumulative percentage of								
				population			floor space			number of rooms		
	s. 1	s. 2	comb.	s. 1	s. 2	comb.	s. 1	s. 2	comb.	s. 1	s. 2	comb.
(1)	(2)	(3)	(4)	(5)	(6)	(7)	(8)	(9)	(10)	(11)	(12)	(13)
10	365	369	734	11.02	11.59	11.30	2.52	2.65	2.58	6.92	7.09	7.00
20	366	366	732	23.03	24.08	23.56	5.82	6.52	6.17	15.01	15.59	15.30
30	369	373	742	34.56	35.21	34.88	10.98	11.82	11.40	23.61	24.73	24.17
40	368	370	738	45.83	46.40	46.12	16.37	17.43	16.90	32.17	32.64	32.40
50	362	357	719	56.45	57.19	56.82	22.95	24.21	23.58	41.46	42.74	42.10
60	370	364	734	66.25	67.58	66.92	29.97	32.31	31.14	50.14	52.31	51.22
70	367	354	721	75.99	77.18	76.58	39.42	42.27	40.84	60.85	62.97	61.91
80	366	358	724	85.88	85.06	85.47	52.45	53.02	52.74	75.30	74.05	74.68
90	372	371	743	93.37	93.91	93.64	66.62	69.00	67.81	86.17	86.58	86.38
100	340	328	668	100.00	100.00	100.00	100.00	100.00	100.00	100.00	100.00	100.00
all	3645	3610	7255	—	—	—	—	—	—	—	—	—

¹The households were ranked in ascending order according to per capita floor space.

Housing Condition



National Sample Survey

TABLE (1.14): PERCENTAGE DISTRIBUTION OF HOUSEHOLDS BY SOURCE OF DRINKING WATER AND POPULATION ZONES: ALL INDIA: RURAL

		population zones					all India			number of sample households
source of drinking water	north	east	south	west	central	north-west	s. 1	s. 2	comb.	
(1)	(2)	(3)	(4)	(5)	(6)	(7)	(8)	(9)	(10)	(11)
number of sample villages : 1840										
number of sample households : 7255										
(a) base : all households										
1. tanks and ponds	0.30	4.71	2.63	0.79	1.21	0.67	9.65	10.95	10.31	
2. wells	15.84	15.10	14.20	5.91	11.15	6.90	68.93	69.28	69.10	
3. tube-wells	0.20	4.41	0.29	0.01	0.07	0.34	4.81	5.81	5.32	
4. river, lakes and springs	1.16	3.21	2.16	1.82	2.41	1.24	13.36	10.68	12.00	
5. municipal water	0.01	0.14	0.15	0.40	0.16	0.20	1.06	1.05	1.06	
6. other sources	0.33	0.49	0.51	0.03	0.11	0.74	2.19	2.23	2.21	
7. total	17.84	28.06	19.94	8.96	15.11	10.09	100.00	100.00	100.00	
(b) base : households of each zone										
1. tanks and ponds	1.65	16.78	13.32	8.79	8.01	6.66	9.65	10.95	10.31	
2. wells	88.81	53.80	71.12	65.91	73.82	68.38	68.93	69.28	69.10	
3. tube-wells	1.13	15.70	1.43	0.08	0.46	3.44	4.81	5.81	5.32	
4. river, lakes and springs	6.47	11.45	10.84	20.36	15.95	12.31	13.36	10.68	12.00	
5. municipal water	0.07	0.51	0.77	4.52	1.01	1.90	1.06	1.05	1.06	
6. other sources	1.87	1.76	2.52	0.34	0.75	7.31	2.19	2.23	2.21	
7. total	100.00	100.00	100.00	100.00	100.00	100.00	100.00	100.00	100.00	
8. number of sample households	1240	1765	1329	661	1133	1127	3645	3610	7255	
(c) base : households under each source										
1. tanks and ponds	2.86	45.67	25.57	7.64	11.74	6.52	—	—	100.00	763
2. wells	22.93	21.85	20.55	8.55	16.14	9.98	—	—	100.00	4796
3. tube-wells	3.78	82.88	5.37	0.14	1.30	6.53	—	—	100.00	310
4. river, lakes and springs	9.62	26.79	18.00	15.20	20.05	10.34	—	—	100.00	1144
5. municipal water	1.12	13.48	14.45	38.31	14.52	18.12	—	—	100.00	63
6. other sources	15.05	22.35	22.75	1.38	5.10	33.37	—	—	100.00	179
7. total	17.84	28.06	19.94	8.96	15.11	10.09	—	—	100.00	7255
8. s. 1	18.15	28.06	19.70	9.01	14.96	10.12	100.00	—	—	3645
9. s. 2	17.54	28.06	20.17	8.92	15.25	10.06	—	100.00	—	3610

Housing Condition

TABLE (1.15): PERCENTAGE DISTRIBUTION OF POPULATION BY SOURCE OF DRINKING WATER AND POPULATION ZONES: ALL INDIA: RURAL

number of sample village : 1840

number of sample persons : 34846

source of drinking water	population zones						all India			number of sample persons
	north	east	south	west	central	north west	s. 1	s. 2	comb.	
(1)	(2)	(3)	(4)	(5)	(6)	(7)	(8)	(9)	(10)	(11)
(a) base : all persons										
1. tanks and ponds	0.28	4.07	2.40	0.80	1.14	0.88	8.83	10.33	9.57	
2. wells	15.38	15.97	14.78	6.50	10.88	7.17	70.95	70.39	70.68	
3. tube-wells	-0.14	4.25	0.40	0.01	0.08	0.40	4.61	5.99	5.28	
4. river, lakes and springs	1.09	2.96	1.95	1.87	2.32	1.32	12.71	10.27	11.51	
5. municipal water	0.01	0.09	0.12	0.34	0.11	0.21	0.77	1.00	0.88	
6. other sources	0.27	0.30	0.44	0.02	0.11	0.94	2.13	2.02	2.08	
7. total	17.17	27.64	20.09	9.54	14.64	10.92	100.00	100.00	100.00	
(b) base : persons of each zone										
1. tanks and ponds	1.66	14.71	11.96	8.34	7.77	8.04	8.83	10.33	9.57	
2. wells	89.60	57.78	73.55	68.12	74.31	65.65	70.95	70.39	70.68	
3. tube-wells	0.80	15.38	1.98	0.09	0.60	3.66	4.61	5.99	5.28	
4. river, lakes and springs	6.34	10.70	9.71	19.67	15.82	12.12	12.71	10.27	11.51	
5. municipal water	0.04	0.33	0.60	3.56	0.76	1.97	0.77	1.00	0.88	
6. other sources	1.56	1.10	2.20	0.22	0.74	8.56	2.13	2.02	2.08	
7. total	100.00	100.00	100.00	100.00	100.00	100.00	100.00	100.00	100.00	
8. number of sample persons	5764	8381	6364	3295	5153	5889	17730	17116	34846	
(c) base : persons under each source										
1. tanks and ponds	2.97	42.52	25.11	8.32	11.90	9.18	—	—	100.00	3478
2. wells	21.76	22.60	20.90	9.19	15.40	10.15	—	—	100.00	23351
3. tube-wells	2.60	80.48	7.54	0.15	1.66	7.57	—	—	100.00	1465
4. river, lakes and springs	9.46	25.69	16.94	16.29	20.12	11.50	—	—	100.00	5396
5. municipal water	0.80	10.38	13.66	38.34	12.57	24.25	—	—	100.00	280
6. other sources	12.92	14.61	21.29	1.00	5.20	44.98	—	—	100.00	876
7. total	17.17	27.64	20.09	9.54	14.64	10.92	—	—	100.00	34846
8. s. 1	17.29	28.39	19.71	9.58	14.33	10.70	100.00	—	—	17730
9. s. 2	17.03	26.87	20.49	9.48	14.98	11.15	—	100.00	—	17116

TABLE (1.16) : PERCENTAGE DISTRIBUTION OF HOUSEHOLDS BY SOURCE OF DRINKING WATER AND MONTHLY HOUSEHOLD EXPENDITURE LEVEL : ALL INDIA : RURAL

		monthly household expenditure level (in rupees)									all levels		
source of drinking water		0—25	26—50	51—100	101—200	201—300	301—400	401—500	501—700	701 and above	s. 1	s. 2	comb.
(1)	(2)	(3)	(4)	(5)	(6)	(7)	(8)	(9)	(10)	(12)	(13)	(13)	
(a) base : all households													
1. tanks and ponds	1.29	3.81	3.81	1.13	0.21	0.06	—	—	—	9.65	10.95	10.31	
2. wells	7.48	23.39	24.31	10.80	1.75	0.78	0.26	0.15	0.18	68.93	69.28	69.10	
3. tube-wells	0.23	0.96	2.30	1.53	0.22	0.01	0.04	0.03	—	4.81	5.81	5.32	
4. rivers, lakes and springs	1.53	4.54	4.09	1.50	0.31	0.01	0.00	0.02	—	13.36	10.68	12.00	
5. municipal water	0.08	0.19	0.49	0.28	—	0.02	—	—	—	1.06	1.05	1.06	
6. other sources	0.14	0.64	0.80	0.38	0.12	0.03	0.06	—	0.04	2.19	2.23	2.21	
7. total	10.75	33.53	35.80	15.62	2.61	0.91	0.36	0.20	0.22	100.00	100.00	100.00	
(b) base : households of each expenditure level													
1. tanks and ponds	12.06	11.36	10.62	7.25	7.88	6.92	—	—	—	9.65	10.95	10.31	
2. wells	69.58	69.78	67.94	69.15	66.90	84.20	71.25	74.75	83.72	68.93	69.28	69.10	
3. tube-wells	2.12	2.86	6.42	9.75	8.52	1.40	12.45	13.90	—	4.81	5.81	5.32	
4. rivers, lakes and springs	14.23	13.52	11.43	9.62	11.97	1.48	0.46	11.35	—	13.36	10.68	21.00	
5. municipal water	0.75	0.58	1.35	1.77	—	2.23	—	—	—	1.06	1.05	1.06	
6. other sources	1.26	1.90	2.24	2.46	4.73	3.77	15.84	—	16.28	2.19	2.23	2.21	
7. total	100.00	100.00	100.00	100.00	100.00	100.00	100.00	100.00	100.00	100.00	100.00	100.00	
8. number of sample households	1030	2711	2470	848	122	39	13	11	11	3645	3610	7255	

TABLE (1.16) (Contd.): PERCENTAGE DISTRIBUTION OF HOUSEHOLDS BY SOURCE OF DRINKING WATER AND MONTHLY HOUSEHOLD EXPENDITURE LEVEL: ALL INDIA: RURAL

number of sample villages : 1840

number of sample households : 7255

source of drinking water	monthly household expenditure level (in rupees)										all levels			number of sample households
	0—25	26—50	51—100	101—200	201—300	301—400	401—500	501—700	701 and above	s. 1	s. 2	comb.		
	(1)	(2)	(3)	(4)	(5)	(6)	(7)	(8)	(9)	(10)	(11)	(12)	(13)	
(c) base : households under each source														
1. tanks and ponds	12.56	36.95	36.89	10.99	2.00	0.61	—	—	—	—	—	100.00	763	
2. wells	10.83	33.85	35.19	15.64	2.53	1.10	0.37	0.22	0.27	—	—	100.00	4796	
3. tube-wells	4.28	18.02	43.21	28.68	4.19	0.24	0.84	0.54	—	—	—	100.00	310	
4. rivers, lakes and springs	12.74	37.77	34.06	12.52	2.60	0.11	0.01	0.19	—	—	—	100.00	1144	
5. municipal water	7.64	18.37	45.87	26.21	—	1.91	—	—	—	—	—	100.00	63	
6. other sources	6.15	28.81	36.33	17.40	5.59	1.54	2.57	—	1.61	—	—	100.00	179	
7. total	10.75	33.53	35.80	15.62	2.61	0.91	0.36	0.20	0.22	—	—	100.00	7255	
8. s. 1	9.96	33.78	35.33	15.74	3.15	1.12	0.43	0.19	0.30	100.00	—	—	3645	
9. s. 2	11.53	33.27	36.27	15.51	2.08	0.69	0.29	0.22	0.14	100.00	—	—	3610	

TABLE (1.17) : PERCENTAGE DISTRIBUTION OF HOUSEHOLDS BY LATRINE TYPE AND POPULATION ZONES : ALL INDIA : RURAL

latrine type	population zones						all India			number of sample households
	north	east	south	west	central	north-west	s. 1	s. 2	comb.	
	(2)	(3)	(4)	(5)	(6)	(7)	(8)	(9)	(10)	
(1)	(2)	(3)	(4)	(5)	(6)	(7)	(8)	(9)	(10)	(11)
(a) base : all households										
1. no built-up latrine	16.78	26.80	19.26	8.10	14.61	9.54	95.58	94.62	95.09	
2. built-up latrine in individual use	0.82	0.78	0.36	0.50	0.44	0.38	3.16	3.40	3.28	
3. built-up latrine in common use with other households	0.24	0.48	0.32	0.33	0.05	0.17	1.19	1.97	1.59	
4. other sources	—	—	—	0.03	0.01	0.00	0.07	0.01	0.04	
5. total	17.84	28.06	19.94	8.96	15.11	10.09	100.00	100.00	100.00	
(b) base : households of each zone										
1. no built-up latrine	94.09	95.49	96.58	90.41	96.76	94.49	95.58	94.62	95.09	
2. built-up latrine in individual use	4.57	2.79	1.81	5.60	2.88	3.79	3.16	3.40	3.28	
3. built-up latrine in common use with other households	1.34	1.72	1.61	3.62	0.32	1.70	1.19	1.97	1.59	
4. other sources	—	—	—	0.37	0.04	0.02	0.07	0.01	0.04	
5. total	100.00	100.00	100.00	100.00	100.00	100.00	100.00	100.00	100.00	
6. number of sample households	1240	1765	1329	661	1133	1127	3645	3610	7255	
(c) base : households under each type										
1. no built-up latrine	17.65	28.18	20.25	8.52	15.37	10.03	—	—	100.00	6978
2. built-up latrine in individual use	24.87	23.86	11.01	15.31	13.28	11.67	—	—	100.00	175
3. built-up latrine in common use with other households	15.07	30.35	20.25	20.47	3.06	10.80	—	—	100.00	99
4. other sources	—	—	—	81.86	13.37	4.77	—	—	100.00	3
5. total	17.84	28.06	19.94	8.96	15.11	10.09	—	—	100.00	7255
6. s. 1	18.15	28.06	19.70	9.01	14.96	10.12	100.00	—	—	3645
7. s. 2	17.54	28.06	20.17	8.92	15.25	10.06	—	100.00	—	3610

TABLE (1.18) : PERCENTAGE DISTRIBUTION OF HOUSEHOLDS BY STRUCTURE TYPE AND MONTHLY HOUSEHOLD EXPENDITURE LEVEL : ALL INDIA : RURAL

number of sample villages : 1840

number of sample households : 7255

structure type	monthly household expenditure level (in rupees)							all levels		
	0—25	26—50	51—100	101—200	201—300	301 and above	s. 1	s. 2	comb.	
	(1)	(2)	(3)	(4)	(5)	(6)	(7)	(8)	(9)	(10)
(a) base : all households										
1. all katcha	7.66	21.50	21.57	7.72	1.34	0.54	60.37	60.30	60.33	
2. katcha plinth and wall, and fabricated roof	1.59	5.65	5.65	2.50	0.52	0.33	16.89	15.60	16.24	
3. pucca plinth, katcha wall and roof of any type	0.32	0.78	1.22	0.57	0.10	0.08	3.24	2.91	3.07	
4. pucca plinth and wall, and katcha roof	0.14	1.53	1.03	0.71	0.08	0.13	2.78	4.44	3.62	
5. pucca plinth and wall, and fabricated roof	0.23	1.13	1.90	1.51	0.18	0.19	5.62	4.67	5.14	
6. all pucca	0.24	0.51	0.94	0.93	0.04	0.07	3.32	2.14	2.73	
7. not reported	0.57	2.43	3.49	1.68	0.35	0.35	7.78	9.94	8.87	
8. total	10.75	33.53	35.80	15.62	2.61	1.69	100.00	100.00	100.00	
(b) base : households of each expenditure level										
1. all katcha	71.30	64.14	60.24	49.40	51.18	32.03	60.37	60.30	60.33	
2. katcha plinth and wall, and fabricated roof	14.83	16.85	15.77	16.02	19.97	19.43	16.89	15.60	16.24	
3. pucca plinth, katcha wall and roof of any type	2.97	2.33	3.40	3.66	3.94	4.71	3.24	2.91	3.07	
4. pucca plinth and wall, and katcha roof	1.29	4.56	2.86	4.57	3.24	7.54	2.78	4.44	3.62	
5. pucca plinth and wall, and fabricated roof	2.11	3.36	5.33	9.66	7.06	11.11	5.62	4.67	5.14	
6. all pucca	2.25	1.52	2.63	5.95	1.31	4.26	3.32	2.14	2.73	
7. not reported	5.25	7.24	9.77	10.74	13.30	20.92	7.78	9.94	8.87	
8. total	100.00	100.00	100.00	100.00	100.00	100.00	100.00	100.00	100.00	
9. number of sample households	1030	2711	2470	848	122	74	3645	3610	7255	

TABLE (1.18) (Contd.): PERCENTAGE DISTRIBUTION OF HOUSEHOLDS BY STRUCTURE TYPE AND MONTHLY HOUSEHOLD EXPENDITURE LEVEL: ALL INDIA: RURAL

number of sample villages : 1840

number of sample households : 7255

structure type	monthly household expenditure level (in rupees)						all levels			number of sample households
	0—25	26—50	51—100	101—200	201—300	301 and above	s. 1	s. 2	comb.	
	(2)	(3)	(4)	(5)	(6)	(7)	(8)	(9)	(10)	
(1)	(2)	(3)	(4)	(5)	(6)	(7)	(8)	(9)	(10)	(11)
(c) base : households under each type										
1. all katcha	12.70	35.64	35.74	12.80	2.22	0.90	—	—	100.00	4805
2. katcha plinth and wall, and fabricated roof	9.81	34.79	34.75	15.42	3.21	2.02	—	—	100.00	1014
3. pucca plinth, katcha wall and roof of any type	10.40	25.43	39.64	18.59	3.35	2.59	—	—	100.00	217
4. pucca plinth and wall, and katcha roof	3.83	42.22	28.35	19.74	2.34	3.52	—	—	100.00	239
5. pucca plinth and wall, and fabricated roof	4.40	21.90	37.11	29.35	3.59	3.65	—	—	100.00	265
6. all pucca	8.86	18.71	34.47	34.08	1.25	2.63	—	—	100.00	170
7. not reported	6.37	27.37	39.44	18.92	3.92	3.98	—	—	100.00	545
8. total	10.75	33.53	35.80	15.62	2.61	1.69	—	—	100.00	7255
9. s. 1	9.96	33.78	35.33	15.74	3.15	2.04	100.00	—	—	3645
10. s. 2	11.53	33.27	36.27	15.51	2.08	1.34	—	100.00	—	3610

TABLE (1.19) : PERCENTAGE DISTRIBUTION OF POPULATION BY STRUCTURE TYPE AND MONTHLY HOUSEHOLD EXPENDITURE LEVEL : ALL INDIA : RURAL

number of sample villages : 1840

number of sample persons : 34846

structure type	monthly household expenditure level (in rupees)						all levels		
	0—25	26—50	51—100	101—200	201—300	301 and above	s. 1	s. 2	ccmb.
	(1)	(2)	(3)	(4)	(5)	(6)	(7)	(8)	(9)
(a) base : all persons									
1. all katcha	3.71	17.11	22.85	11.02	2.32	1.06	56.72	59.49	58.07
2. katcha plinth and wall, and fabricated roof	0.65	4.58	6.29	3.64	1.09	0.94	18.86	15.44	17.19
3. pucca plinth, katcha wall and roof of any type	0.13	0.65	1.23	0.94	0.13	0.20	3.46	3.09	3.28
4. pucca plinth and wall and katcha roof	0.07	0.88	1.28	0.95	0.14	0.34	3.17	4.17	3.66
5. pucca plinth and wall, and fabricated roof	0.08	0.78	2.02	1.90	0.31	0.67	6.00	5.52	5.76
6. all pucca	0.08	0.31	1.02	1.22	0.07	0.11	3.38	2.21	2.81
7. not reported	0.22	1.73	3.73	2.28	0.66	0.61	8.41	10.08	9.23
8. total	4.94	26.04	38.42	21.95	4.72	3.93	100.00	100.00	100.00
(b) base : persons of each expenditure level									
1. all katcha	75.05	65.72	59.48	50.20	49.12	27.08	56.72	59.49	58.07
2. katcha plinth and wall and fabricated roof	13.06	17.59	16.37	16.61	23.11	23.78	18.86	15.44	17.19
3. pucca plinth, katcha wall and roof of any type	2.72	2.48	3.19	4.26	2.80	5.18	3.46	3.09	3.28
4. pucca plinth and wall, and katcha roof	1.35	3.38	3.34	4.33	2.95	8.65	3.17	4.17	3.66
5. pucca plinth and wall, and fabricated roof	1.67	3.01	5.24	8.65	6.64	17.10	6.00	5.52	5.76
6. all pucca	1.65	1.17	2.66	5.56	1.42	2.88	3.38	2.21	2.81
7. not reported	4.50	6.65	9.72	10.39	13.96	15.33	8.41	10.08	9.23
8. total	100.00	100.00	100.00	100.00	100.00	100.00	100.00	100.00	100.00
9. number of sample persons	2600	10939	13380	6006	1070	851	17730	17116	34846

Housing Condition

TABLE (1.19) (Contd.) : PERCENTAGE DISTRIBUTION OF POPULATION BY STRUCTURE TYPE AND MONTHLY HOUSEHOLD EXPENDITURE LEVEL : ALL INDIA : RURAL

number of sample villages : 1840

number of sample persons : 34846

structure type	monthly household expenditure level (in rupees)							all levels			number of sample persons
	0—25	26—50	51—100	101—200	201—300	301 and above	s. 1	s. 2	comb.		
	(2)	(3)	(4)	(5)	(6)	(7)	(8)	(9)	(10)		
(1)	(2)	(3)	(4)	(5)	(6)	(7)	(8)	(9)	(10)	(11)	
(c) base : persons under each type											
1. all katcha	6.38	29.46	39.35	18.98	3.99	1.84	—	—	100.00	22348	
2. katcha plinth and wall, and fabricated roof	3.75	26.64	36.60	21.22	6.34	5.45	—	—	100.00	5044	
3. pucca plinth, katcha wall and roof of any type	4.10	19.71	37.41	28.53	4.03	6.22	—	—	100.00	1107	
4. pucca plinth and wall, and katcha roof	1.83	24.05	35.05	25.95	3.81	9.31	—	—	100.00	1314	
5. pucca plinth and wall, and fabricated roof	1.43	13.58	34.93	32.94	5.44	11.68	—	—	100.00	1422	
6. all pucca	2.90	10.87	36.36	43.44	2.39	4.04	—	—	100.00	821	
7. not reported	2.41	18.76	40.45	24.71	7.13	6.54	—	—	100.00	2790	
8. total	4.94	26.04	38.42	21.95	4.72	3.93	—	—	100.00	34846	
9. s. 1	4.59	25.79	36.97	21.86	5.74	5.05	100.00	—	—	17730	
10. s. 2	5.31	26.29	39.94	22.04	3.65	2.77	—	100.00	—	17116	

TABLE (1.20) : PERCENTAGE DISTRIBUTION OF HOUSEHOLDS BY STRUCTURE TYPE AND PERIOD BUILT SINCE : ALL INDIA : RURAL

number of sample villages : 1840

number of sample households : 7255

structure type	period built since						all levels		
	below 1 year	1 year to below 4 years	4 years to below 12 years	12 years to below 22 years	22 years and above	s. 1	s. 2	comb.	
	(1)	(2)	(3)	(4)	(5)	(6)	(7)	(8)	(9)
(a) base : all households									
1. all katcha	6.05	8.04	13.93	9.00	23.31	60.37	60.30	60.33	
2. katcha plinth and wall, and fabricated roof	1.01	1.38	3.61	2.76	7.48	16.89	15.60	16.24	
3. pucca plinth, katcha wall and roof of any type	0.21	0.30	0.61	0.31	1.64	3.24	2.91	3.07	
4. pucca plinth and wall, and katcha roof	0.55	0.72	0.37	0.41	1.57	2.78	4.44	3.62	
5. pucca plinth and wall, and fabricated roof	0.67	0.40	0.92	1.24	1.91	5.62	4.67	5.14	
6. all pucca	0.19	0.13	0.42	0.61	1.38	3.32	2.14	2.73	
7. not reported	0.85	0.84	2.12	1.07	3.99	7.78	9.94	8.87	
8. total	9.53	11.81	21.98	15.40	41.28	100.00	100.00	100.00	
(b) base : period built since									
1. all katcha	70.25	69.62	63.58	58.40	56.46	60.37	60.30	60.33	
2. katcha plinth and wall, and fabricated roof	8.50	10.96	16.34	17.93	18.13	16.89	15.60	16.24	
3. pucca plinth, katcha wall and roof of any type	2.91	3.00	2.84	2.00	3.96	3.24	2.91	3.07	
4. pucca plinth and wall, and katcha roof	4.21	4.57	1.75	2.67	3.81	2.78	4.44	3.62	
5. pucca plinth and wall, and fabricated roof	4.72	3.96	4.05	8.05	4.62	5.62	4.67	5.14	
6. all pucca	1.00	1.13	1.90	3.97	3.35	3.32	2.14	2.73	
7. not recorded	8.41	6.76	9.54	6.98	9.67	7.78	9.94	8.87	
8. total	100.00	100.00	100.00	100.00	100.00	100.00	100.00	100.00	
9. number of sample households	690	886	1636	1187	2856	3645	3610	7255	

TABLE (1.20) (Contd.) : PERCENTAGE DISTRIBUTION OF HOUSEHOLDS BY STRUCTURE TYPE AND PERIOD BUILT SINCE :
ALL INDIA : RURAL

number of sample villages : 1840

number of sample households : 7255

structure type	period built since						all levels			number of sample households
	below 1 year	1 year to below 4 years	4 years to below 12 years	12 years to below 22 years	22 years and above	s. 1	s. 2	comb.		
	(1)	(2)	(3)	(4)	(5)	(6)	(7)	(8)	(9)	
(c) base : structure type										
1. all katcha	10.04	13.33	23.09	14.91	38.63	—	—	100.00	4805	
2. katcha plinth and wall, and fabricated roof	6.21	8.46	22.24	17.00	46.09	—	—	100.00	1014	
3. pucca plinth, katcha wall and roof of any type	6.79	9.92	20.03	10.00	53.26	—	—	100.00	217	
4. pucca plinth and wall, and katcha roof	14.92	20.02	10.23	11.35	43.46	—	—	100.00	239	
5. pucca plinth and wall, and fabricated roof	13.05	7.85	17.83	24.13	37.14	—	—	100.00	265	
6. all pucca	6.80	4.94	15.24	22.41	50.61	—	—	100.00	170	
7. not reported	9.64	9.37	23.84	12.13	45.02	—	—	100.00	545	
8. total	9.53	11.81	21.98	15.40	41.28	—	—	100.00	7255	
9. s. 1	9.21	11.92	22.04	15.35	41.48	100.00	—	—	3645	
10. s. 2	9.84	11.71	21.92	15.45	41.08	—	100.00	—	3610	

Housing Condition

TABLE (1.21): PERCENTAGE DISTRIBUTION OF POPULATION BY STRUCTURE TYPE
AND PERIOD BUILT SINCE: ALL INDIA: RURAL

number of sample villages : 1840

number of sample persons : 34846

structure type	period built since								number of sample persons
	below 1 year	1 year to be- low 4 years	4 years to be- low 12 years	12 years to be- low 22	22 years and above	all levels			
						s. 1	s. 2	comb.	
(1)	(2)	(3)	(4)	(5)	(6)	(7)	(8)	(9)	(10)
(a) base : all persons									
1. all katcha	5.37	7.09	13.54	9.37	22.70	56.72	59.49	58.07	
2. katcha plinth and wall and fabricated roof	1.10	1.45	4.05	3.05	7.54	18.86	15.44	17.19	
3. pucca plinth, katcha wall and roof of any type	0.19	0.28	0.64	0.35	1.82	3.46	3.09	3.28	
4. pucca plinth and wall, and katcha roof	0.36	0.35	0.53	0.45	1.97	3.17	4.17	3.66	
5. pucca plinth and wall, and fabricated roof	0.51	0.40	1.40	1.23	2.22	6.00	5.52	5.76	
6. all pucca	0.23	0.14	0.50	0.57	1.37	3.38	2.21	2.81	
7. not reported	0.79	0.91	2.34	1.25	3.94	8.41	10.08	9.23	
8. total	8.55	10.62	23.00	16.27	41.56	100.00	100.00	100.00	
(b) base : period built since									
1. all katcha	69.08	67.13	59.56	57.57	54.61	56.72	59.49	58.07	
2. katcha plinth and wall, and fabricated roof	10.51	13.07	17.31	18.73	18.15	18.86	15.44	17.19	
3. pucca plinth, katcha wall and roof of any type	3.64	2.96	2.99	2.13	4.38	3.46	3.09	3.28	
4. pucca plinth and wall, and katcha roof	2.80	2.54	2.55	2.78	4.73	3.17	4.17	3.66	
5. pucca plinth and wall, and fabricated roof	4.32	4.62	5.63	7.56	5.34	6.00	5.52	5.76	
6. all pucca	1.40	1.25	2.14	3.52	3.31	3.38	2.21	2.81	
7. not reported	8.25	8.43	9.82	7.71	9.48	8.41	10.08	9.23	
8. total	100.00	100.00	100.00	100.00	100.00	100.00	100.00	100.00	
9. number of sample households	3030	3951	7964	6004	13897	17730	17116	34846	
(c) base : structure type									
1. all katcha	9.25	12.20	23.34	16.13	39.08	—	—	100.00	22348
2. katcha plinth and wall, and fabricated roof	6.35	8.46	23.57	17.73	43.89	—	—	100.00	5044
3. pucca plinth, katcha wall and roof of any type	5.80	8.61	19.51	10.58	55.50	—	—	100.00	1107
4. pucca plinth and wall, and katcha roof	9.67	9.76	14.52	12.34	53.71	—	—	100.00	1314
5. pucca plinth and wall, and fabricated roof	8.86	6.98	24.33	21.33	38.50	—	—	100.00	1422
6. all pucca	8.29	4.78	17.56	20.40	48.97	—	—	100.00	821
7. not reported	8.63	9.83	25.28	13.59	42.67	—	—	100.00	2790
8. total	8.55	10.62	23.00	16.27	41.56	—	—	100.00	34846
9. s. 1	8.07	10.84	23.23	16.13	41.73	100.00	—	—	17730
10. s. 2	9.05	10.39	22.76	16.42	41.38	—	100.00	—	17116

National Sample Survey

URBAN

TABLE (2.1): PERCENTAGE DISTRIBUTION OF HOUSEHOLDS BY NUMBER OF PERSONS AND NUMBER OF ROOMS: ALL INDIA: URBAN

number of sample blocks : 582

number of sample households : 2840

number of persons	number of rooms							total			number of sample households
	1	2	3	4	5-6	7- above	s. 1	s. 2	comb.		
	(1)	(2)	(3)	(4)	(5)	(6)	(7)	(8)	(9)	(10)	
(a) base : all households											
1. one	5.60	5.50	2.50	1.57	2.16	3.31	21.04	20.10	20.64		
2. two	—	4.59	1.88	1.58	1.12	0.55	9.40	10.07	9.72		
3. three	5.13	4.82	2.64	1.88	1.03	0.15	15.74	15.58	15.65		
4. four	5.93	5.06	2.22	0.95	0.31	0.07	13.46	14.78	14.54		
5. five	7.93	3.71	1.50	1.75	0.15	—	14.31	15.76	15.04		
6. six	—	3.77	1.41	1.10	—	—	5.60	6.92	6.28		
7. seven	6.33	1.10	0.50	0.13	—	—	7.18	8.91	8.06		
8. eight	3.73	0.98	0.05	0.05	—	—	6.05	4.59	4.81		
9. above eight	4.83	0.34	0.09	—	—	—	7.22	3.29	5.26		
10. all persons	39.48	29.87	12.79	9.01	4.77	4.08	100.00	100.00	100.00		
(b) base : number of rooms in households											
1. one	13.93	18.41	19.57	17.41	45.36	80.97	21.04	20.10	20.64		
2. two	—	15.36	14.68	23.26	23.42	13.53	9.40	10.07	9.72		
3. three	13.00	16.14	28.53	20.88	21.56	3.70	15.74	15.58	15.65		
4. four	15.21	16.93	17.33	10.50	6.49	1.80	13.46	14.78	14.54		
5. five	20.13	12.43	11.74	24.93	3.17	—	14.31	15.76	15.04		
6. six	—	9.28	3.17	1.06	—	—	5.60	6.92	6.28		
7. seven	16.04	3.70	3.89	1.39	—	—	7.18	8.91	8.06		
8. eight	9.46	6.62	0.40	0.57	—	—	6.05	4.59	4.81		
9. above eight	12.23	1.13	0.69	—	—	—	7.22	3.29	5.26		
10. all persons	100.00	100.00	100.00	100.00	100.00	100.00	100.00	100.00	100.00		
11. number of sample households	1093	873	370	231	171	102	1420	1420	2840		
(c) base : number of persons in household											
1. one	43.33	20.72	9.44	5.91	8.14	12.46	—	—	100.00	313	
2. two	—	44.85	18.36	20.48	10.91	5.40	—	—	100.00	279	
3. three	30.78	28.93	21.91	11.30	6.17	0.91	—	—	100.00	318	
4. four	31.12	27.65	25.77	11.00	3.60	0.86	—	—	100.00	355	
5. five	51.07	23.86	9.66	14.44	0.97	—	—	—	100.00	470	
6. six	—	84.71	12.37	2.92	—	—	—	—	100.00	363	
7. seven	78.57	13.71	6.17	1.55	—	—	—	—	100.00	297	
8. eight	64.21	34.01	0.89	0.89	—	—	—	—	100.00	157	
9. above eight	91.87	6.45	1.68	—	—	—	—	—	100.00	288	
10. all persons	39.48	29.87	12.79	9.01	4.77	4.08	—	—	100.00	2840	
11. s. 1	38.97	32.05	13.88	6.58	4.47	4.05	100.00	—	—	1420	
12. s. 2	39.96	27.77	11.74	11.36	5.05	4.12	—	100.00	—	1420	

Housing Condition

TABLE (2.2) : PERCENTAGE DISTRIBUTION OF HOUSEHOLDS BY NUMBER OF ROOMS AND STRATUM GROUP : ALL INDIA : URBAN

number of sample blocks : 582				number of sample households : 2840			
number of rooms	stratum group			all India			number of sample households
	cities (Bombay, Calcutta, Delhi and Madras)	'big' towns	'small' towns	s. 1	s. 2	comb.	
(1)	(2)	(3)	(4)	(5)	(6)	(7)	(8)
(a) base : all households							
1. one	7.82	5.58	26.08	38.97	39.96	39.48	
2. two	2.54	5.13	22.20	32.05	27.77	29.87	
3. three	0.82	1.16	10.81	13.88	11.74	12.79	
4. four	0.49	0.83	7.69	6.58	11.36	9.01	
5. five-six	0.24	1.00	3.53	4.47	5.05	4.77	
6. above six	0.21	0.82	3.05	4.05	4.12	4.08	
7. total	12.12	14.52	73.36	100.00	100.00	100.00	
(b) base : households of each stratum group							
1. one	64.53	38.42	35.54	38.97	39.96	39.48	
2. two	20.94	35.30	30.27	32.05	27.77	29.87	
3. three	6.75	7.98	14.75	13.88	11.74	12.79	
4. four	4.04	5.73	10.48	6.58	11.36	9.01	
5. five-six	2.01	6.89	4.80	4.47	5.05	4.77	
6. above six	1.73	5.68	4.16	4.05	4.12	4.08	
7. total	100.00	100.00	100.00	100.00	100.00	100.00	
8. number of sample households	600	564	1676	1420	1420	2840	
(c) base : households by number of rooms							
1. one	19.82	14.14	66.04	—	—	100.00	1093
2. two	8.49	17.17	74.34	—	—	100.00	873
3. three	6.39	9.07	84.54	—	—	100.00	370
4. four	5.44	9.23	85.33	—	—	100.00	231
5. five-six	5.10	21.02	73.88	—	—	100.00	171
6. above six	5.14	20.20	74.66	—	—	100.00	102
7. total	12.12	14.52	73.36	—	—	100.00	2840
8. s. 1	11.99	16.32	71.69	100.00	—	—	1420
9. s. 2	12.24	12.80	74.96	—	100.00	—	1420

TABLE (2.3) : PERCENTAGE DISTRIBUTION OF HOUSEHOLDS BY NUMBER OF ROOMS AND MONTHLY HOUSEHOLD EXPENDITURE LEVEL : ALL INDIA : URBAN

number of sample blocks : 582		number of sample households : 2840										
number of rooms	monthly household expenditure level (in rupees)										all levels	
	0—25	26—50	51—100	101—200	201—300	301—400	401—500	501—700	701—above	s. 2	s. 1	comb.
	(1)	(2)	(3)	(4)	(5)	(6)	(7)	(8)	(9)	(10)	(11)	(12)
(a) base : all households												
1. one	3.36	11.74	15.36	7.28	1.42	0.17	0.11	0.01	0.03	38.97	39.96	39.48
2. two	0.76	5.52	12.92	7.51	2.50	0.25	0.26	0.13	0.02	32.05	27.77	29.87
3. three	0.25	1.54	4.40	4.53	1.03	0.63	0.14	0.23	0.04	13.88	11.74	12.79
4. four	0.16	0.36	3.28	3.70	0.91	0.30	0.19	0.07	0.04	6.58	11.36	9.01
5. five and six	0.00	0.24	1.46	1.08	0.86	0.24	0.09	0.10	0.70	4.47	5.05	4.77
6. above six	0.03	0.15	1.28	1.18	0.40	0.30	0.32	0.13	0.29	4.05	4.12	4.08
7. total	4.56	19.55	38.70	25.28	7.12	1.89	1.11	0.67	1.12	100.00	100.00	100.00
(b) base : households of each expenditure level												
1. one	73.75	60.08	46.80	30.91	19.91	9.21	9.74	2.17	2.37	38.97	39.96	39.48
2. two	16.57	28.22	32.48	31.82	35.17	13.43	23.15	19.16	1.71	32.05	27.77	29.87
3. three	5.49	7.86	11.35	19.18	14.44	33.10	12.47	33.39	3.66	13.88	11.74	12.79
4. four	3.51	1.83	4.95	10.19	12.76	15.61	17.21	10.86	3.92	6.58	11.36	9.01
5. five and six	0.06	1.24	3.61	4.34	12.14	12.93	8.11	14.77	62.50	4.47	5.05	4.77
6. above six	0.62	0.77	0.81	3.56	5.58	15.72	29.32	19.65	25.84	4.05	4.12	4.08
7. total	100.00	100.00	100.00	100.00	100.00	100.00	100.00	100.00	100.00	100.00	100.00	100.00
8. number of sample households	118	501	993	767	263	76	45	37	40	1420	1420	2840

TABLE (2.3) (Contd.): PERCENTAGE DISTRIBUTION OF HOUSEHOLDS BY NUMBER OF ROOMS AND MONTHLY HOUSEHOLD EXPENDITURE LEVEL : ALL INDIA : URBAN

number of sample blocks : 582

number of sample households : 2840

number of rooms	monthly household expenditure level (in rupees)										all levels			number of sample households
	0—25	26—50	51—100	101—200	201—300	301—400	401—500	501—700	701—above	s. 1	s. 2	comb.		
(1)	(2)	(3)	(4)	(5)	(6)	(7)	(8)	(9)	(10)	(11)	(12)	(13)	(14)	
(e) base : households by number of rooms														
1. one	7.81	27.29	43.90	16.95	3.30	0.41	0.25	0.03	0.06	—	—	100.00	1093	
2. two	2.51	18.36	43.63	24.98	8.33	0.85	0.85	0.43	0.06	—	—	100.00	873	
3. three	1.93	11.87	35.35	34.94	7.94	4.84	1.06	1.75	0.32	—	—	100.00	370	
4. four	2.48	5.56	31.06	37.39	14.14	4.60	2.95	1.14	0.68	—	—	100.00	231	
5. five and six	0.06	5.12	30.87	21.69	18.30	5.18	1.89	2.12	14.77	—	—	100.00	171	
6. above six	1.02	5.42	11.71	30.14	14.27	10.69	11.61	4.78	10.36	—	—	100.00	102	
7. total	4.56	19.55	38.70	25.28	7.12	1.89	1.11	0.67	1.12	—	—	100.00	2840	
8. s. 1	4.07	19.49	43.31	20.55	7.96	1.73	0.86	0.77	1.26	100.00	—	—	1420	
9. s. 2	5.03	19.64	37.51	26.62	6.32	2.05	1.49	0.56	0.78	—	100.00	—	1420	

National Sample Survey

TABLE (2.4) : PERCENTAGE DISTRIBUTION OF HOUSEHOLD BY AVERAGE NUMBER OF PERSONS PER ROOM AND STRATUM GROUP : ALL INDIA : URBAN

number of sample blocks : 582

number of sample households : 2840

average number of persons per room	stratum group			all India		
	cities (Bombay, Calcutta, Delhi and Madras)	'big' towns	'small' towns	s. 1	s. 2	comb.
(1)	(2)	(3)	(4)	(5)	(6)	(7)
(a) base : all households						
1. below 1.0	4.26	4.54	16.56	25.34	25.38	25.36
2. 1.0 < 1.5	0.56	1.54	9.98	10.64	13.52	12.08
3. 1.5 < 2.0	2.03	2.24	11.55	16.67	14.84	15.82
4. 2.0 < 2.5	0.43	1.11	7.26	9.80	7.82	8.80
5. 2.5 < 3.0	1.47	1.59	10.45	14.24	12.87	13.51
6. 3.0 < 3.5	0.38	0.57	2.38	3.75	2.95	3.33
7. 3.5 < 4.0	1.05	1.28	5.45	6.63	8.91	7.78
8. 4.0 < 5.0	0.88	0.87	4.44	6.05	6.34	6.19
9. 5.0 and above	1.06	0.78	5.29	6.88	7.37	7.13
10. total	12.12	14.52	73.36	100.00	100.00	100.00
11. s. 1	11.99	16.32	71.69	100.00	—	—
12. s. 2	12.24	12.80	74.96	—	100.00	—
(b) base : households of each stratum group						
1. below 1.0	35.13	31.28	22.58	25.34	25.38	25.36
2. 1.0 < 1.5	4.62	10.57	11.22	10.64	13.52	12.08
3. 1.5 < 2.0	16.77	15.41	18.06	16.67	14.84	15.82
4. 2.0 < 2.5	3.56	7.65	9.88	9.80	7.82	8.80
5. 2.5 < 3.0	12.15	10.97	14.29	14.24	12.87	13.51
6. 3.0 < 3.5	3.10	3.95	3.26	3.75	2.95	3.33
7. 3.5 < 4.0	8.69	8.79	7.44	6.63	8.91	7.78
8. 4.0 < 5.0	7.23	6.01	6.06	6.05	6.34	6.19
9. 5.0 and above	8.75	5.37	7.21	6.88	7.37	7.13
10. total	100.00	100.00	100.00	100.00	100.00	100.00
11. number of sample households	600	564	1676	1420	1420	2840

TABLE (2.5) : PERCENTAGE DISTRIBUTION OF HOUSEHOLDS BY AVERAGE NUMBER OF PERSONS PER ROOM AND MONTHLY HOUSEHOLD EXPENDITURE LEVEL : ALL INDIA : URBAN

number of sample blocks : 582

number of sample households : 2840

average number of persons per room	monthly household expenditure level (in rupees)										all level		
	0—25	26—50	51—100	101—200	201—300	301—400	401—500	501—700	701—above	s. 1	s. 2	comb.	
	(1)	(2)	(3)	(4)	(5)	(6)	(7)	(8)	(9)	(10)	(11)	(12)	(13)
(a) base : all households													
1. below 1.0	3.02	8.06	9.24	3.03	0.85	0.20	0.32	0.23	0.41	25.34	25.38	25.36	
2. 1.0 < 1.5	0.01	1.35	4.12	4.36	1.38	0.32	0.16	0.09	0.29	10.64	13.52	12.08	
3. 1.5 < 2.0	0.87	3.15	5.03	4.06	1.87	0.39	0.09	0.02	0.34	16.67	14.84	15.82	
4. 2.0 < 2.5	0.03	1.01	4.00	2.48	0.69	0.32	0.19	0.04	0.04	9.80	7.82	8.80	
5. 2.5 < 3.0	0.39	3.25	6.01	2.86	0.60	0.27	0.10	0.00	0.03	14.24	12.87	13.51	
6. 3.0 < 3.5	—	0.15	1.43	1.19	0.31	0.10	0.12	0.03	—	3.75	2.95	3.33	
7. 3.5 < 4.0	0.12	1.28	3.38	2.42	0.36	0.10	—	0.12	0.00	6.63	8.91	7.78	
8. 4.0 < 5.0	0.11	0.86	2.55	1.95	0.52	0.10	0.02	0.08	—	6.05	6.34	6.19	
9. 5.0 and above	0.01	0.44	2.94	2.93	0.54	0.09	0.11	0.06	0.01	6.88	7.37	7.13	
10. total	4.56	19.55	38.70	25.28	7.12	1.89	1.11	0.67	1.12	100.00	100.00	100.00	
11. s. 1	4.07	19.49	43.31	20.55	7.96	1.73	0.86	0.77	1.26	100.00	—	—	
12. s. 2	5.03	19.64	37.51	26.62	6.32	2.05	1.49	0.56	0.78	—	100.00	—	

TABLE (2.5) (Contd.): PERCENTAGE DISTRIBUTION OF HOUSEHOLDS BY AVERAGE NUMBER OF PERSONS PER ROOM AND MONTHLY HOUSEHOLD EXPENDITURE LEVEL: ALL INDIA: URBAN

number of sample blocks : 582

number of sample households : 2840

average number of persons per room	monthly household expenditure level (in rupees)										all level		
	0-25	26-50	51-100	101-200	201-300	301-400	401-500	501-700	701-above	s. 1	s. 2	comb.	
(1)	(2)	(3)	(4)	(5)	(6)	(7)	(8)	(9)	(10)	(11)	(12)	(13)	
(b) base: households of each expenditure level													
1. below 1.0	66.21	41.16	22.85	12.82	11.92	11.11	30.64	31.71	39.93	25.43	25.38	25.36	
2. 1.0 < 1.5	0.06	7.02	10.20	11.40	19.32	16.85	13.52	13.77	18.87	10.64	13.52	12.08	
3. 1.5 < 2.0	19.25	16.11	16.65	17.19	26.29	20.49	7.31	2.55	33.50	16.67	14.84	15.82	
4. 2.0 < 2.5	0.74	5.15	9.90	10.49	9.67	16.78	16.24	6.05	3.69	9.80	7.82	8.80	
5. 2.5 < 3.0	8.50	16.59	14.88	12.13	8.48	14.22	11.43	0.61	2.60	14.24	12.87	13.51	
6. 3.0 < 3.5	—	0.78	3.55	5.05	4.37	5.44	9.96	5.16	—	3.75	2.95	3.33	
7. 3.5 < 4.0	2.57	6.56	8.37	10.25	5.06	5.05	—	18.77	0.47	6.63	8.91	7.78	
8. 4.0 < 5.0	2.44	4.37	6.32	8.25	7.36	5.46	1.66	12.05	—	6.05	6.34	6.19	
9. 5.0 and above	0.23	2.26	7.28	12.42	7.53	4.60	9.24	9.33	0.94	6.88	7.37	7.13	
10. total	100.00	100.00	100.00	100.00	100.00	100.00	100.00	100.00	100.00	100.00	100.00	100.00	
11. number of sample households	118	501	993	767	263	76	45	37	40	1420	1420	2840	

TABLE (2.6) : AVERAGE NUMBER OF PERSONS PER ROOM BY MONTHLY PER PERSON EXPENDITURE LEVEL AND NUMBER OF PERSONS IN HOUSEHOLD : ALL INDIA : URBAN

per person expenditure level (in rupees)	number of persons in household									number of sample households : 2840			number of sample households
	one	two	three	four	five	six	seven	eight	nine and above	s. 1	s. 2	comb.	
	(2)	(3)	(4)	(5)	(6)	(7)	(8)	(9)	(10)	(11)	(12)	(13)	
1. 0—8	0.7	1.3	1.9	2.7	2.6	2.9	2.6	3.6	3.2	2.9	2.6	2.8	129
2. 8—11	1.0	1.2	1.7	2.4	2.6	2.7	2.7	4.3	3.5	2.6	2.9	2.8	266
3. 11—13	0.8	0.9	2.5	2.5	3.7	3.2	1.9	3.0	3.1	2.7	2.5	2.6	199
4. 13—15	0.9	1.6	1.9	1.7	2.0	3.0	3.2	2.9	3.1	2.3	2.5	2.4	218
5. 15—18	1.1	1.0	1.6	2.3	2.3	2.7	3.2	3.5	2.9	2.5	2.3	2.4	328
6. 18—21	0.7	1.2	2.2	2.0	2.0	2.3	2.8	2.6	3.2	2.2	2.2	2.2	252
7. 21—24	0.7	1.0	1.5	1.9	2.3	2.5	2.3	2.0	2.2	2.0	1.9	2.0	222
8. 24—28	0.7	1.1	1.6	2.6	2.1	2.3	2.4	2.3	2.5	2.1	2.0	2.0	252
9. 28—34	1.0	1.4	1.5	1.7	2.3	2.3	2.4	1.9	2.2	1.7	1.8	1.8	242
10. 34—43	0.8	1.4	1.9	2.1	1.4	2.0	2.0	1.8	2.3	1.8	1.6	1.7	246
11. 43—55	0.8	1.2	1.3	1.7	1.9	2.2	2.4	3.4	2.6	1.8	1.5	1.6	161
12. 55—above	0.7	0.8	1.4	1.4	1.1	1.5	1.5	1.5	1.6	1.2	1.2	1.2	325
13. total s. 1	0.7	1.2	1.7	2.0	2.2	2.5	2.6	2.7	2.8	2.1	—	—	1420
14. s. 2	0.8	1.1	1.7	2.2	2.1	2.6	2.4	2.4	2.5	—	2.1	—	1420
15. comb.	0.8	1.2	1.7	2.1	2.2	2.6	2.5	2.6	2.6	—	—	2.1	2840
16. number of sample households	313	279	318	355	470	363	297	157	288	1420	1420	2840	

TABLE (2.7) : PERCENTAGE DISTRIBUTION OF HOUSEHOLDS BY FLOOR SPACE (SQ. FT.) AND MONTHLY HOUSEHOLD EXPENDITURE LEVEL : ALL INDIA : URBAN

		monthly household expenditure level (in rupees)									all level		
floor space (square feet)		0—25	26—50	51—100	101—200	201—300	301—400	401—500	501—700	701—above	s. 1	s. 2	comb.
(1)	(2)	(3)	(4)	(5)	(6)	(7)	(8)	(9)	(10)	(11)	(12)	(13)	
(a) base : all households													
1.	0 — 50	0.42	2.77	2.61	0.41	0.05	—	—	—	—	6.79	5.76	6.26
2.	51 — 100	1.79	3.81	6.99	3.54	0.19	0.04	0.02	—	0.04	15.66	17.16	16.42
3.	101 — 200	0.96	5.83	11.68	6.91	1.09	0.13	—	0.01	—	27.10	26.17	26.61
4.	201 — 300	0.30	2.76	7.49	6.00	1.03	0.14	0.03	0.03	0.02	18.07	17.57	17.80
5.	301 — 400	0.41	1.47	4.17	2.16	0.72	0.06	0.02	0.03	0.02	9.38	8.75	9.06
6.	401 — 500	0.05	0.74	2.24	2.23	0.98	0.29	0.02	0.05	0.05	6.82	6.48	6.65
7.	501 — 600	0.21	0.55	0.76	1.07	1.07	0.32	0.03	0.09	0.03	4.66	3.62	4.13
8.	601 — 800	0.06	0.58	0.72	0.67	1.00	0.24	0.02	0.06	0.31	3.76	3.55	3.66
9.	801—1000	0.19	0.46	0.97	1.00	0.47	0.09	0.03	0.10	0.11	2.99	3.80	3.42
10.	1000—above	0.17	0.58	1.07	1.29	0.52	0.58	0.94	0.30	0.54	4.77	7.14	5.99
11.	total	4.56	19.55	38.70	25.28	7.12	1.89	1.11	0.67	1.12	100.00	100.00	100.00

TABLE (2.7) (Contd.): PERCENTAGE DISTRIBUTION OF HOUSEHOLDS BY FLOOR SPACE (SQ. FT.) AND MONTHLY HOUSEHOLD EXPENDITURE LEVEL: ALL INDIA: URBAN

number of sample blocks : 582

number of sample households : 2840

floor space (square feet)	monthly household expenditure level (in rupees)										all level		
	0—25	26—50	51—100	101—200	201—300	301—400	401—500	501—700	701— above	s. 1	s. 2	comb.	
	(1)	(2)	(3)	(4)	(5)	(6)	(7)	(8)	(9)	(10)	(11)	(12)	(13)
(b) base : households of each expenditure level													
1. 0 — 50	9.16	14.12	7.05	1.67	0.28	—	—	—	—	6.79	5.76	6.26	
2. 51 — 100	38.46	19.39	18.11	12.08	2.62	1.90	2.47	—	2.66	15.66	17.16	16.42	
3. 101 — 200	20.97	20.31	13.80	15.48	7.58	6.88	—	2.17	—	27.10	26.17	26.61	
4. 201 — 300	6.67	14.07	12.15	13.73	11.43	7.60	2.93	4.18	1.92	18.07	17.57	17.80	
5. 301 — 400	8.89	7.56	10.23	8.57	10.08	3.11	5.21	4.88	1.59	9.38	8.75	9.06	
6. 401 — 500	1.32	3.86	9.93	9.48	13.75	15.22	12.28	7.22	4.87	6.82	6.48	6.65	
7. 501 — 600	4.78	5.41	9.21	10.36	15.12	16.93	8.94	13.08	2.58	4.66	3.62	4.13	
8. 601 — 800	1.46	5.58	5.48	7.07	14.08	12.63	0.90	8.41	31.01	3.76	3.55	3.66	
9. 801—1000	4.34	2.43	4.71	3.23	3.37	4.92	3.60	14.60	10.96	2.99	3.80	3.42	
10. 1000—above	3.95	7.27	9.33	18.33	21.69	30.81	63.67	45.46	44.41	4.77	7.14	5.99	
11. total	100.00	100.00	100.00	100.00	100.00	100.00	100.00	100.00	100.00	100.00	100.00	100.00	
12. number of sample households	118	501	993	767	263	76	45	37	40	1420	1420	2840	

TABLE (2.7) (Contd.) : PERCENTAGE DISTRIBUTION OF HOUSEHOLDS BY FLOOR SPACE (SQ. FT.) AND MONTHLY HOUSEHOLD EXPENDITURE LEVEL : ALL INDIA : URBAN

number of sample blocks : 582		number of sample households : 2840											
floor space (square feet)	monthly household expenditure level (in rupees)										all level		number of sample house- holds
	0—25	26—50	51— 100	101— 200	201— 300	301— 400	401— 500	501— 700	701 and above	s. 1	s. 2	comb.	
(1)	(2)	(3)	(4)	(5)	(6)	(7)	(8)	(9)	(10)	(11)	(12)	(13)	(14)
(c) base : households under each floor space group													
1. 0 — 50	6.67	43.34	43.61	6.07	0.31	—	—	—	—	—	—	100.00	157
2. 51 — 100	11.28	23.99	45.16	17.74	1.16	0.23	0.27	—	0.17	—	—	100.00	458
3. 101 — 200	6.63	27.10	37.12	24.53	3.64	0.88	—	0.10	—	—	—	100.00	840
4. 201 — 300	2.56	22.77	39.64	26.38	6.66	1.18	0.42	0.23	0.16	—	—	100.00	486
5. 301 — 400	4.68	16.78	45.70	22.56	8.04	0.66	1.03	0.37	0.18	—	—	100.00	264
6. 401 — 500	0.72	8.90	46.09	25.91	11.39	3.35	2.51	0.57	0.56	—	—	100.00	174
7. 501 — 600	2.47	11.81	40.51	26.82	11.87	3.53	1.73	0.98	0.28	—	—	100.00	99
8. 601 — 800	1.03	16.63	32.89	25.01	15.09	3.60	0.24	0.86	4.65	—	—	100.00	109
9. 801—1000	5.18	12.25	47.84	19.34	6.11	2.37	1.61	2.52	2.78	—	—	100.00	88
10. 1000—above	1.36	10.54	27.28	31.52	11.31	4.28	8.21	2.26	3.24	—	—	100.00	165
11. total	4.56	19.55	38.70	25.28	7.12	1.89	1.11	0.67	1.12	—	—	100.00	2840
12. s. 1	4.07	19.49	43.31	20.55	7.96	1.73	0.86	0.77	1.26	100.00	—	—	1420
13. s. 2	5.03	19.64	37.51	26.62	6.32	2.05	1.49	0.56	0.78	—	100.00	—	1420

Housing Condition

TABLE (2.8) : PERCENTAGE DISTRIBUTION OF HOUSEHOLDS BY FLOOR SPACE
(SQ. FT.) PER PERSON AND STRATUM GROUP : ALL INDIA : URBAN

number of sample blocks : 582		number of sample households : 2840					
floor space (square feet) per person	stratum group			all India			number of sample households
	cities (Bombay, Calcutta, Delhi and Madras)	'big' towns	'small' towns	s. 1	s. 2	comb.	
(1)	(2)	(3)	(4)	(5)	(6)	(7)	(8)
(a) base : all households							
1. 0—25	3.05	3.55	11.75	16.80	19.85	18.33	
2. 26—50	3.90	3.90	20.40	27.59	28.78	28.20	
3. 51—75	1.33	2.46	11.87	20.48	10.98	15.66	
4. 76—100	1.17	1.70	9.58	12.15	12.75	12.45	
5. 101—150	1.46	1.50	8.24	10.05	12.31	11.20	
6. 151—200	0.54	0.56	4.84	5.29	6.56	5.94	
7. 201—250	0.21	0.33	2.96	2.80	4.21	3.50	
8. 251—300	0.12	0.16	1.03	1.32	1.30	1.31	
9. 301-above	0.34	0.36	2.69	3.52	3.26	3.39	
10. total	12.12	14.52	73.36	100.00	100.00	100.00	
(b) base : households of each stratum group							
1. 0—25	25.19	24.46	16.01	16.80	19.85	18.35	
2. 26—50	32.15	26.86	27.80	27.59	28.78	28.20	
3. 51—75	10.94	16.90	16.18	20.48	10.98	15.66	
4. 76—100	9.69	11.68	13.07	12.15	12.75	12.45	
5. 101—150	12.06	10.34	11.23	10.05	12.31	11.20	
6. 151—200	4.44	3.88	6.59	5.29	6.56	5.94	
7. 201—250	1.76	2.28	4.05	2.80	4.21	3.50	
8. 251—300	1.00	1.12	1.40	1.32	1.30	1.31	
9. 301-above	2.77	2.48	3.67	3.52	3.26	3.39	
10. total	100.00	100.00	100.00	100.00	100.00	100.00	
11. number of sample households	600	564	1676	1420	1420	2840	
(c) base : households under each floor space group							
1. 0—25	16.64	19.37	63.99	—	—	100.00	657
2. 26—50	13.82	13.85	72.33	—	—	100.00	833
3. 51—75	8.47	15.69	75.84	—	—	100.00	425
4. 76—100	9.43	13.63	76.94	—	—	100.00	289
5. 101—150	13.05	13.42	73.53	—	—	100.00	285
6. 151—200	9.06	9.49	81.45	—	—	100.00	134
7. 201—250	6.08	9.43	84.49	—	—	100.00	75
8. 251—300	9.30	12.39	78.31	—	—	100.00	32
9. 301-above	9.89	10.65	79.46	—	—	100.00	110
10. total	12.12	14.52	73.36	—	—	100.00	2840
11. s. 1	11.99	16.32	71.69	100.00	—	—	1420
12. s. 2	12.24	12.80	74.96	—	100.00	—	1420

National Sample Survey

TABLE (2.9) : PERCENTAGE DISTRIBUTION OF HOUSEHOLDS BY FLOOR SPACE
(SQ. FT.) AND STRATUM GROUP : ALL INDIA : URBAN

		stratum group			all India			number of sample house- holds
floor space (square feet)	cities (Bombay, Calcutta, Delhi and Madras)	'big' towns	'small' towns	s. 1	s. 2	comb.		
(1)	(2)	(3)	(4)	(5)	(6)	(7)	(8)	
(a) base : all households								
1. 0 — 50	1.57	1.04	3.65	6.79	5.76	6.26		
2. 51 — 100	2.77	3.38	10.27	15.66	17.16	16.42		
3. 101 — 200	4.51	4.06	18.04	27.10	26.17	26.61		
4. 201 — 300	1.52	2.70	13.58	18.07	17.57	17.80		
5. 301 — 400	0.67	1.19	7.20	9.38	8.75	9.06		
6. 401 — 500	0.24	0.67	5.74	6.82	6.48	6.65		
7. 501 — 600	0.11	0.44	3.58	4.66	3.62	4.13		
8. 601 — 800	0.09	0.30	3.27	3.76	3.55	3.66		
9. 801 — 1000	0.09	0.18	3.15	2.99	3.80	3.42		
10. 1001-above	0.55	0.56	4.88	4.77	7.14	5.99		
11. total	12.12	14.52	73.36	100.00	100.00	100.00		
(b) base : households of each stratum group								
1. 0 — 50	12.94	7.17	4.98	6.79	5.76	6.26		
2. 51 — 100	22.86	23.24	14.02	15.66	17.16	16.42		
3. 101 — 200	37.21	27.93	24.61	27.10	26.17	26.61		
4. 201 — 300	12.57	18.55	18.52	18.07	17.57	17.80		
5. 301 — 400	5.54	8.19	9.81	9.38	8.75	9.06		
6. 401 — 500	1.99	4.59	7.82	6.82	6.48	6.65		
7. 501 — 600	0.88	3.06	4.88	4.66	3.62	4.13		
8. 601 — 800	0.73	2.02	4.45	3.76	3.55	3.66		
9. 801 — 1000	0.71	1.22	4.29	2.99	3.80	3.42		
10. 1000-above	4.57	4.03	6.62	4.77	7.14	5.99		
11. total	100.00	100.00	100.00	100.00	100.00	100.00		
12. number of sample households	600	564	1676	1420	1420	2840		
(c) base : households under each floor space group								
1. 0 — 50	25.05	16.63	58.32	—	—	100.00	157	
2. 51 — 100	18.86	20.56	60.58	—	—	100.00	458	
3. 101 — 200	16.94	15.25	67.81	—	—	100.00	840	
4. 201 — 300	8.56	15.14	76.30	—	—	100.00	486	
5. 301 — 400	7.41	13.14	79.45	—	—	100.00	264	
6. 401 — 500	3.62	10.05	86.33	—	—	100.00	174	
7. 501 — 600	2.58	10.76	86.66	—	—	100.00	99	
8. 601 — 800	2.43	8.04	89.53	—	—	100.00	109	
9. 801 — 1000	2.53	5.19	92.28	—	—	100.00	88	
10. 1000-above	9.24	9.77	80.99	—	—	100.00	165	
11. total	12.12	14.52	73.36	—	—	100.00	2840	
12. s. 1	11.99	16.32	71.69	100.00	—	—	1420	
13. s. 2	12.24	12.80	74.96	—	100.00	—	1420	

TABLE (2.10) : PERCENTAGE DISTRIBUTION OF HOUSEHOLDS BY FLOOR SPACE (SQ. FT.) PER PERSON AND NUMBER OF PERSONS IN HOUSEHOLD : ALL INDIA : URBAN

number of sample blocks : 582

number of sample households : 2840

floor space (square feet) per person	number of persons in household										total		
	one	two	three	four	five	six	seven	eight	nine and above	s. 1	s. 2	comb.	
	(1)	(2)	(3)	(4)	(5)	(6)	(7)	(8)	(9)	(10)	(11)	(12)	(13)
(a) base : all households													
1. 0—25	2.98	0.60	1.73	3.66	3.94	1.15	1.75	1.42	1.12	16.80	19.85	18.35	
2. 26—50	3.81	2.48	5.40	4.72	5.32	1.92	2.28	1.26	1.01	27.59	28.78	28.20	
3. 51—75	2.39	2.07	2.79	1.53	2.08	0.88	2.07	0.90	0.95	20.48	10.98	15.66	
4. 76—100	2.85	0.97	2.05	2.32	1.89	0.75	0.57	0.40	0.65	12.15	12.75	12.45	
5. 101—150	2.53	1.59	1.98	1.24	1.13	0.69	0.74	0.36	0.94	10.05	12.31	11.20	
6. 151—200	2.57	0.87	0.92	0.24	0.15	0.44	0.36	0.11	0.28	5.29	6.56	5.94	
7. 201—250	1.24	0.50	0.35	0.65	0.32	0.12	0.10	0.13	0.09	2.80	4.21	3.50	
8. 251—300	0.51	0.14	0.27	—	0.15	0.11	0.04	0.02	0.07	1.32	1.30	1.31	
9. 301 and above	1.76	0.50	0.16	0.18	0.06	0.22	0.15	0.21	0.15	3.52	3.26	3.39	
10. total	20.64	9.72	15.65	14.54	15.04	6.28	8.06	4.81	5.26	100.00	100.00	100.00	

67

Housing Condition

TABLE (2.10) (Contd.): PERCENTAGE DISTRIBUTION OF HOUSEHOLDS BY FLOOR SPACE (SQ. FT.) PER PERSON AND NUMBER OF PERSONS IN HOUSEHOLD : ALL INDIA : URBAN

number of sample blocks : 582

number of sample households : 2840

floor space (square foot) per person	number of persons in household									total		
	one	two	three	four	five	six	seven	eight	nine and above	s. 1	s. 2	comb.
	(1)	(2)	(3)	(4)	(5)	(6)	(7)	(8)	(9)	(10)	(11)	(12)
(b) base : number of persons in household												
1. 0—25	11.60	5.92	9.28	22.71	26.19	29.05	19.42	32.48	28.36	16.80	19.85	18.35
2. 26—50	12.95	24.54	30.31	26.17	32.11	36.41	35.86	28.83	32.07	27.59	28.78	28.20
3. 51—75	12.51	24.33	18.83	19.97	11.63	9.90	22.88	10.67	13.67	20.48	10.98	15.66
4. 76—100	17.37	9.57	12.26	14.33	12.07	9.82	6.35	9.12	7.72	12.15	12.75	12.45
5. 101—150	17.02	15.76	13.08	8.20	7.91	6.47	8.18	8.23	11.16	10.05	12.31	11.20
6. 151—200	6.70	8.59	8.88	4.37	3.92	4.15	4.02	2.58	3.37	5.29	6.56	5.94
7. 201—250	7.39	4.98	1.20	3.00	1.12	1.09	1.16	2.98	1.07	2.80	4.21	3.50
8. 251—300	3.56	1.39	1.84	—	1.07	1.08	0.44	0.36	0.82	1.32	1.30	1.31
9. 301 and above	10.90	4.92	4.32	1.25	3.98	2.03	1.69	4.75	1.76	3.52	3.26	3.39
10. total	100.00	100.00	100.00	100.00	100.00	100.00	100.00	100.00	100.00	100.00	100.00	100.00
11. number of sample households	313	279	318	355	470	363	297	157	288	1420	1420	2840

TABLE (2.10) (Contd.): PERCENTAGE DISTRIBUTION OF HOUSEHOLDS BY FLOOR SPACE (SQ. FT.) PER PERSON AND NUMBER OF PERSONS IN HOUSEHOLD : ALL INDIA : URBAN

number of sample blocks : 582

number of sample households : 2840

floor space (square feet) (per person)	number of persons in household										total			number of sample households
	one	two	three	four	five	six	seven	eight	nine and above	s. 1	s. 2	comb.		
	(1)	(2)	(3)	(4)	(5)	(6)	(7)	(8)	(9)	(10)	(11)	(12)	(13)	
(c) base : households under each floor space group														
1. 0—25	8.36	3.13	7.18	17.24	18.76	16.17	9.19	7.44	12.53	—	—	100.00	657	
2. 26—50	6.69	8.82	15.95	13.49	15.64	13.77	11.53	4.48	9.63	—	—	100.00	833	
3. 51—75	11.15	15.09	17.10	17.77	9.78	6.46	12.70	2.86	7.09	—	—	100.00	425	
4. 76—100	22.15	8.20	15.38	17.63	14.01	8.86	4.87	3.38	5.52	—	—	100.00	289	
5. 101—150	22.45	14.49	17.60	10.80	9.84	6.26	6.73	3.27	8.56	—	—	100.00	285	
6. 151—200	17.60	15.70	23.78	11.46	9.71	7.98	6.58	2.04	5.15	—	—	100.00	134	
7. 201—250	38.57	18.08	6.36	15.65	5.48	4.18	3.75	4.68	3.25	—	—	100.00	75	
8. 251—300	39.30	10.65	20.68	—	11.16	8.74	3.02	1.18	5.27	—	—	100.00	32	
9. 301 and above	37.95	11.92	15.34	4.34	13.06	5.18	3.67	4.98	3.56	—	—	100.00	110	
10. total	20.64	9.72	15.65	14.54	15.04	6.28	8.06	4.81	5.26	—	—	100.00	2840	
11. s. 1	21.04	9.40	15.74	13.46	14.31	5.60	7.18	6.05	7.22	100.00	—	—	1420	
12. s. 2	20.10	10.07	15.58	14.78	15.76	6.92	8.91	4.59	3.29	—	100.00	—	1420	

TABLE (2.11) : PERCENTAGE DISTRIBUTION OF HOUSEHOLDS BY FLOOR SPACE (SQ. FT.) PER PERSON AND MONTHLY HOUSEHOLD EXPENDITURE LEVEL : ALL INDIA : URBAN

number of sample blocks : 582

number of sample households : 2840

floor space (square feet) per person	monthly household expenditure level (in rupees)										all level		
	0—25	26—50	51—100	101—200	201—300	301—400	401—500	501—700	701 and above		s. 1	s. 2	comb.
	(1)	(2)	(3)	(4)	(5)	(6)	(7)	(8)	(9)	(10)	(11)	(12)	(13)
(a) base : all households													
1. 0—25	0.54	3.24	6.69	6.49	0.80	0.31	0.08	0.13	0.07	16.80	19.85	18.35	
2. 26—50	1.16	6.36	10.81	6.79	2.09	0.46	0.20	0.18	0.15	27.59	28.78	28.20	
3. 51—75	0.42	3.13	6.50	3.32	1.61	0.27	0.09	0.08	0.24	20.48	10.98	15.66	
4. 76—100	0.78	2.00	3.97	3.64	1.10	0.28	0.25	0.02	0.41	12.15	12.75	12.45	
5. 101—150	0.73	1.73	4.93	2.38	0.79	0.38	0.06	0.11	0.09	10.05	12.31	11.20	
6. 151—200	0.36	1.02	2.61	1.42	0.17	0.09	0.13	0.06	0.08	5.29	6.56	5.94	
7. 201—250	0.31	0.82	1.02	0.94	0.16	0.07	0.07	0.08	0.03	2.80	4.21	3.50	
8. 251—300	0.17	0.34	0.39	0.25	0.11	0.01	0.03	0.01	—	1.32	1.30	1.31	
9. 301 and above	0.09	0.91	1.78	0.05	0.29	0.02	0.20	—	0.05	3.52	3.26	3.39	
10. total	4.56	19.55	38.70	25.28	7.12	1.89	1.11	0.67	1.12	100.00	100.00	100.00	

70

National Sample Survey

TABLE (2.11) (Contd.): PERCENTAGE DISTRIBUTION OF HOUSEHOLDS BY FLOOR SPACE (SQ. FT.) PER PERSON AND MONTHLY HOUSEHOLD EXPENDITURE LEVEL: ALL INDIA: URBAN

number of sample blocks : 582

number of sample households : 2840

floor space (square feet) per person	monthly household expenditure level (in rupees)										all level		
	0—25	26—50	51—100	101—200	201—300	301—400	401—500	501—700	701 and above	s. 1	s. 2	comb.	
	(1)	(2)	(3)	(4)	(5)	(6)	(7)	(8)	(9)	(10)	(11)	(12)	(13)
(b) base : households of each expenditure level													
1. 0—25	11.87	18.30	20.76	21.31	11.16	16.50	7.19	19.44	6.87	16.80	19.85	18.35	
2. 26—50	25.45	30.79	26.75	30.51	29.67	24.48	23.75	25.01	5.05	27.59	28.78	28.20	
3. 51—75	9.13	16.03	16.08	15.35	22.53	13.98	7.50	12.78	23.10	20.48	10.98	15.66	
4. 76—100	17.04	10.23	9.84	12.29	15.40	14.95	21.25	3.33	40.44	12.15	12.75	12.45	
5. 101—150	15.99	8.83	12.21	8.81	11.11	20.19	5.32	16.67	8.66	10.05	12.31	11.20	
6. 151—200	8.00	5.24	6.47	4.49	2.33	4.85	10.62	8.33	8.30	5.29	6.56	5.94	
7. 201—250	6.70	4.18	2.52	1.37	2.22	3.50	5.62	12.22	2.53	2.80	4.21	3.50	
8. 251—300	3.80	1.75	0.97	0.89	1.55	0.58	2.19	2.22	—	1.32	1.30	1.31	
9. 301 and above	2.02	4.65	4.40	4.98	4.03	0.97	16.56	—	5.05	3.52	3.26	3.39	
10. total	100.00	100.00	100.00	100.00	100.00	100.00	100.00	100.00	100.00	100.00	100.00	100.00	
11. number of sample households	118	501	993	767	263	76	45	37	40	1420	1420	2840	

TABLE (2.11) (Contd.): PERCENTAGE DISTRIBUTION OF HOUSEHOLDS BY FLOOR SPACE (SQ. FT.) PER PERSON AND MONTHLY HOUSEHOLD EXPENDITURE LEVEL: ALL INDIA: URBAN

number of sample blocks : 582

number of sample households : 2840

floor space (square feet) per person	monthly household expenditure level (in rupees)										all level			number of sample households
	0—25	26—50	51—100	101—200	201—300	301—400	401—500	501—700	701 and above	s. 1	s. 2	comb.		
	(1)	(2)	(3)	(4)	(5)	(6)	(7)	(8)	(9)	(10)	(11)	(12)	(13)	

(c) base : households under each floor space group

1. 0—25	2.86	18.91	44.30	26.58	4.20	1.65	0.45	0.68	0.37	—	—	100.00	657
2. 26—50	4.10	21.31	38.23	25.48	7.48	1.64	0.99	0.59	0.18	—	—	100.00	833
3. 51—75	2.61	19.65	40.73	22.72	10.07	1.66	0.55	0.53	1.48	—	—	100.00	425
4. 76—100	6.63	17.06	33.91	24.76	9.37	2.42	2.14	0.19	3.52	—	—	100.00	289
5. 101—150	6.69	15.84	45.23	9.08	7.26	3.51	0.57	1.01	0.81	—	—	100.00	285
6. 151—200	6.53	18.32	46.80	18.98	2.97	1.65	2.24	0.99	1.52	—	—	100.00	134
7. 201—250	10.68	28.57	35.52	11.33	5.53	2.32	2.32	2.83	0.90	—	—	100.00	75
8. 251—300	13.54	26.80	30.55	16.43	8.65	0.86	2.02	1.15	—	—	—	100.00	32
9. 301 and above	2.04	20.20	39.42	26.08	6.38	0.41	4.33	—	1.14	—	—	100.00	110
10. total	4.56	19.55	38.70	25.28	7.12	1.89	1.11	0.67	1.12	—	—	100.00	2840
11. s. 1	4.07	19.49	43.31	20.55	7.96	1.73	0.86	0.77	1.26	100.00	—	—	1420
12. s. 2	5.03	19.64	37.51	26.62	6.32	2.05	1.49	0.56	0.78	—	100.00	—	1420

TABLE (2.12) : PERCENTAGE DISTRIBUTION OF HOUSEHOLDS BY MONTHLY PER PERSON EXPENDITURE LEVEL AND FLOOR SPACE (SQ. FT.) PER PERSON : ALL INDIA : URBAN

number of sample blocks : 582

number of sample households : 2840

monthly per person expenditure level (in rupees)	floor space (square feet) per person										total		
	0—25	26—50	51—75	76—100	101—150	151—200	201—250	251—300	300 and above	s. 1	s. 2	comb.	
	(1)	(2)	(3)	(4)	(5)	(6)	(7)	(8)	(9)	(10)	(11)	(12)	(13)
(a) base : all households													
1. 0—8	1.69	1.20	0.82	2.06	0.47	0.55	0.43	0.13	0.08	6.69	8.17	7.43	
2. 8—11	2.48	4.01	1.22	0.87	0.39	0.48	0.25	0.00	0.14	8.89	10.79	9.84	
3. 11—13	1.00	3.23	1.25	0.46	0.33	0.20	0.07	0.13	0.03	5.87	7.53	6.70	
4. 13—15	2.12	2.34	1.30	1.01	0.60	0.17	1.07	0.17	0.18	8.29	7.63	7.96	
5. 15—18	2.09	3.24	1.43	0.88	1.32	0.73	0.30	—	0.16	12.59	7.71	10.15	
6. 18—21	2.13	2.47	1.30	0.77	1.21	0.54	0.55	0.07	0.32	9.12	9.60	9.36	
7. 21—24	1.26	1.84	1.19	0.91	0.98	0.58	0.30	0.03	0.50	5.87	9.31	7.59	
8. 24—28	1.90	1.89	1.23	1.29	1.21	0.35	0.08	—	0.34	7.43	9.15	8.29	
9. 28—34	1.33	2.47	1.57	1.25	1.05	0.85	0.34	0.01	0.34	9.87	8.55	9.21	
10. 34—43	1.31	2.33	1.51	0.69	1.15	0.34	0.27	0.27	0.35	8.32	8.12	8.22	
11. 43—55	0.64	1.30	0.89	0.76	0.94	0.33	0.22	0.21	0.09	6.13	4.63	5.38	
12. 55 and above	0.40	1.88	1.95	1.50	1.55	0.82	0.62	0.29	0.86	10.93	8.81	9.87	
13. total	18.35	28.20	15.66	12.45	11.20	5.94	3.50	1.31	3.39	100.00	100.00	100.00	

73

Housing Condition

TABLE (2.12) (Contd.): PERCENTAGE DISTRIBUTION OF HOUSEHOLDS BY MONTHLY PER PERSON EXPENDITURE LEVEL AND FLOOR SPACE (SQ. FT.) PER PERSON : ALL INDIA : URBAN

number of sample blocks : 582

number of sample households : 2840

monthly per person expenditure level (in rupees)	floor space (square feet) per person									total		
	0—25	26—50	51—75	76—100	101—150	151—200	201—250	251—300	300 and above	s. 1	s. 2	comb.
	(1)	(2)	(3)	(4)	(5)	(6)	(7)	(8)	(9)	(10)	(11)	(12)
(b) base : households under each floor space group												
1. 0—8	8.93	4.26	5.12	2.77	2.14	1.88	1.57	10.00	1.80	6.69	8.17	7.43
2. 8—11	13.04	14.23	7.66	7.39	3.57	8.72	7.97	0.23	5.66	8.89	10.79	9.84
3. 11—13	10.20	11.47	7.80	3.95	3.02	3.58	2.22	10.06	0.82	5.87	7.53	6.70
4. 13—15	11.15	8.29	8.12	8.66	5.46	3.09	2.36	13.24	6.55	8.29	7.63	7.96
5. 15—18	11.00	11.47	15.20	7.50	12.02	13.34	9.76	—	6.08	12.59	7.71	10.15
6. 18—21	11.23	8.75	8.16	6.56	11.07	9.77	17.59	5.04	9.97	9.12	9.60	9.36
7. 21—24	5.09	6.51	5.32	7.78	8.90	10.61	9.53	2.25	14.02	5.87	9.31	7.59
8. 24—28	10.01	6.71	5.58	11.04	11.07	6.32	2.46	—	10.29	7.43	9.15	8.29
9. 28—34	6.99	8.76	9.85	10.68	9.57	15.50	10.86	0.59	10.35	9.87	8.55	9.21
10. 34—43	6.88	8.25	9.42	5.86	10.45	6.22	8.68	20.29	10.50	8.32	8.12	8.22
11. 43—55	3.36	4.62	5.57	6.46	8.59	5.96	7.11	15.81	2.12	6.13	4.63	5.38
12. 55 and above	2.12	6.68	12.20	21.35	14.14	15.01	19.89	22.49	21.84	10.93	8.81	9.87
13. total	100.00	100.00	100.00	100.00	100.00	100.00	100.00	100.00	100.00	100.00	100.00	100.00
14. number of sample households	657	833	425	289	285	134	75	32	110	1420	1420	2840

TABLE (2.12) (Contd.): PERCENTAGE DISTRIBUTION OF HOUSEHOLDS BY MONTHLY PER PERSON EXPENDITURE LEVEL AND FLOOR SPACE (SQ. FT.) PER PERSON : ALL INDIA : URBAN

number of sample blocks : 582

number of sample households : 2840

monthly per person expenditure level (in rupees)	floor space (square feet) per person										total			number of sample house- holds
	0—25	26—50	51—75	76—100	101— 150	151— 200	201— 250	251— 300	300 and above	s. 1	s. 2	comb.		
	(1)	(2)	(3)	(4)	(5)	(6)	(7)	(8)	(9)	(10)	(11)	(12)	(13)	
(c) base : monthly per person expenditure level														
1. 0—8	36.57	25.92	17.69	7.01	5.06	2.22	1.05	2.82	1.66	—	—	100.00	129	
2. 8—11	24.92	40.36	12.32	8.71	3.94	4.81	2.49	0.03	2.42	—	—	100.00	266	
3. 11—13	25.33	42.31	16.32	6.05	4.34	2.57	0.90	1.72	0.46	—	—	100.00	199	
4. 13—15	26.25	29.01	16.11	12.59	7.43	2.10	0.91	2.15	3.45	—	—	100.00	218	
5. 15—18	18.57	28.78	21.62	7.82	11.72	6.50	2.69	—	2.30	—	—	100.00	328	
6. 18—21	22.53	26.10	13.80	8.13	12.83	5.66	5.77	0.70	4.48	—	—	100.00	252	
7. 21—24	13.71	26.09	12.09	12.94	13.84	8.25	4.20	0.42	8.46	—	—	100.00	222	
8. 24—28	23.58	23.50	11.09	16.07	15.08	4.30	0.95	—	5.43	—	—	100.00	252	
9. 28—34	14.25	26.55	16.92	13.45	11.27	9.13	3.62	0.08	4.73	—	—	100.00	242	
10. 34—43	15.74	28.05	18.17	8.28	13.82	4.11	3.25	3.20	5.38	—	—	100.00	246	
11. 43—55	11.86	24.22	16.58	14.10	17.53	6.07	4.11	3.85	1.68	—	—	100.00	161	
12. 55 and above	3.67	17.21	17.81	22.85	14.16	7.51	5.63	2.68	8.48	—	—	100.00	325	
13. total	18.35	28.20	15.66	12.45	11.20	5.94	3.50	1.31	3.39	—	—	100.00	2840	
14. s. 1	16.80	27.59	20.48	12.15	10.05	5.29	2.80	1.32	3.52	100.00	—	—	1420	
15. s. 2	19.85	28.78	10.98	12.75	12.31	6.56	4.21	1.30	3.26	—	100.00	—	1420	

TABLE (2.13) : AVERAGE FLOOR SPACE (SQ. FT.) PER PERSON BY MONTHLY PER PERSON EXPENDITURE LEVEL AND NUMBER OF PERSONS IN HOUSEHOLD : ALL INDIA : URBAN

number of sample blocks : 582

number of sample households : 2840

monthly per person expenditure level (in rupees)	number of persons in household											number of sample house- holds	
	one	two	three	four	five	six	seven	eight	nine and above	total			
	(2)	(3)	(4)	(5)	(6)	(7)	(8)	(9)	(10)	s. 1	s. 2		comb.
1. 0—8	206.4	124.5	110.1	41.9	68.5	45.6	53.2	29.5	66.1	46.5	70.8	58.6	129
2. 8—11	93.6	103.8	122.9	63.7	60.5	48.0	64.3	32.1	60.3	54.6	80.4	67.5	266
3. 11—13	94.7	158.0	60.0	71.9	49.0	36.1	56.0	66.5	51.1	57.8	53.3	55.6	199
4. 13—15	83.9	72.7	76.9	7.22	71.9	73.6	48.8	99.5	49.2	59.7	75.4	67.6	218
5. 15—18	137.1	105.0	106.1	76.7	61.2	68.0	53.6	34.7	40.9	60.6	82.8	71.7	328
6. 18—21	166.0	191.1	67.6	87.5	104.1	97.2	40.7	55.9	61.6	75.7	89.5	82.6	252
7. 21—24	206.9	150.5	97.4	118.5	90.0	63.8	101.4	89.1	87.3	87.0	108.1	97.6	222
8. 24—28	212.3	98.4	113.1	75.5	65.4	60.8	65.2	121.3	58.6	80.8	81.8	81.3	252
9. 28—34	177.4	113.2	156.3	97.9	46.3	41.0	56.3	76.2	55.2	100.8	82.3	91.6	242
10. 34—43	176.6	107.6	85.9	141.1	147.0	62.4	67.6	125.8	47.3	94.2	105.7	100.00	246
11. 43—55	128.8	106.9	92.4	81.8	86.6	43.5	56.5	63.8	41.7	98.4	116.4	107.4	161
12. 55 and above	178.1	136.6	101.0	104.5	176.5	101.4	134.8	113.7	90.7	141.5	123.3	132.4	325
13. total s. 1	181.2	100.8	105.5	78.9	79.8	64.0	52.6	58.3	56.2	75.4	—	—	1420
14. s. 2	182.7	144.9	120.9	89.9	83.8	62.0	78.0	72.8	70.3	—	87.0	—	1420
15. comb.	182.0	122.8	113.2	84.4	81.8	63.0	65.3	65.6	63.2	—	—	81.2	2840
16. number of sample households	313	279	318	355	470	363	297	157	288	1420	1420	2840	—

TABLE (2.13A) : CUMULATIVE PERCENTAGE OF POPULATION, FLOOR SPACE AND NUMBER OF ROOMS BY SUB-SAMPLES :
ALL INDIA : URBAN

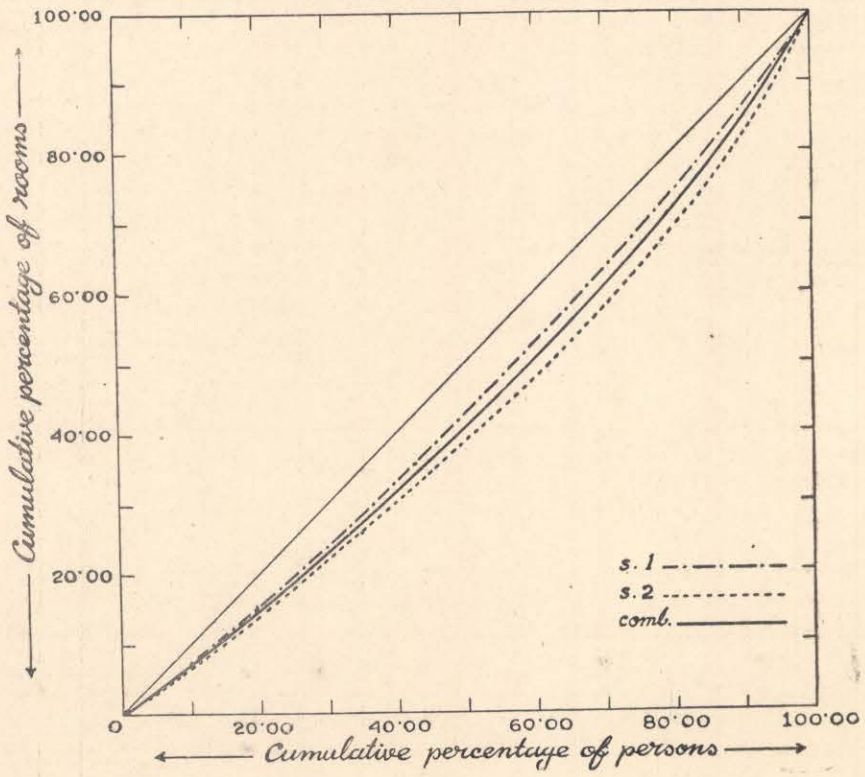
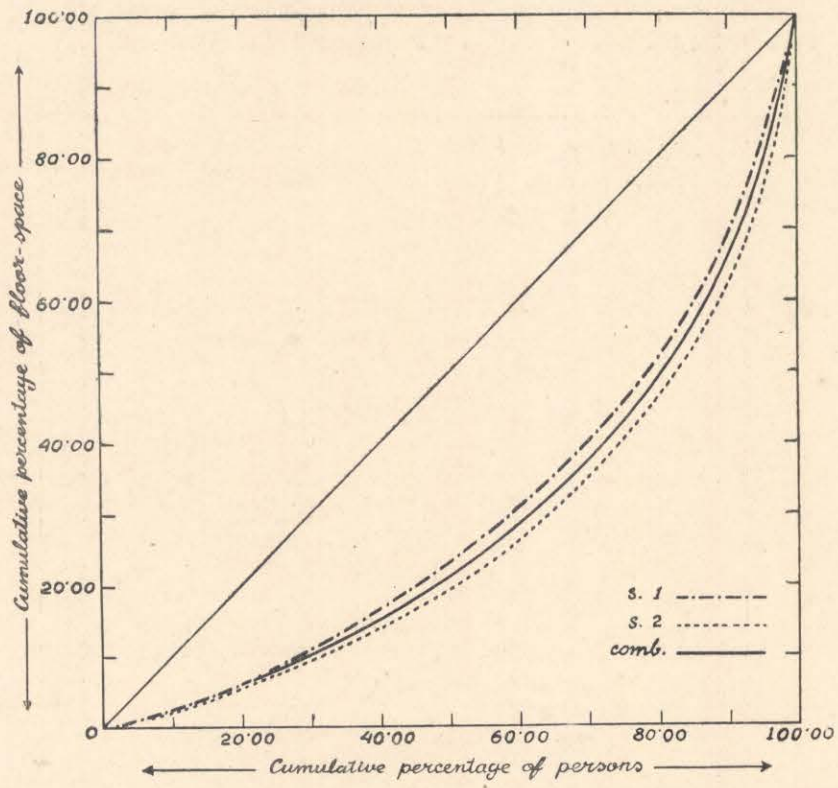
number of sample blocks : 582

number of sample households : 2840

percentiles (of house- holds) ¹	number of sample households			cumulative percentage of								
				population			floor space			number of rooms		
	s. 1	s. 2	comb.	s. 1	s. 2	comb.	s. 1	s. 2	comb.	s. 1	s. 2	comb.
(1)	(2)	(3)	(4)	(5)	(6)	(7)	(8)	(9)	(10)	(11)	(12)	(13)
10	144	142	286	24.00	22.08	23.00	5.21	4.33	4.72	13.51	13.07	13.28
20	141	136	277	54.29	53.76	54.01	20.95	17.79	19.19	38.96	35.05	36.91
30	143	139	282	71.04	67.79	69.35	35.14	28.04	31.19	56.96	49.67	53.15
40	140	144	284	82.11	77.39	79.65	48.39	38.05	42.64	70.65	61.11	65.66
50	145	141	286	90.87	87.75	89.25	63.18	52.89	57.46	82.31	75.09	78.53
60	139	145	284	95.05	92.73	93.84	73.20	63.25	67.67	89.01	83.23	85.98
70	136	140	276	97.11	94.52	95.76	79.59	68.00	73.14	92.85	86.72	89.64
80	142	146	288	97.84	95.66	96.70	82.31	71.66	76.39	94.34	88.58	91.33
90	146	143	289	98.22	96.72	97.44	83.95	75.64	79.33	95.04	91.02	92.93
100	144	144	288	100.00	100.00	100.00	100.00	100.00	100.00	100.00	100.00	100.00
all	1420	1420	2840	—	—	—	—	—	—	—	—	—

¹ The households were ranked in ascending order according to per capita floor space.

National Sample Survey



Housing Condition

TABLE (2.14) : PERCENTAGE DISTRIBUTION OF HOUSEHOLDS BY SOURCE OF DRINKING WATER AND STRATUM GROUP : ALL INDIA : URBAN

number of sample blocks : 582

number of sample households : 2840

source of drinking water	stratum group			all India			number of sample households
	'cities' (Bombay, Calcutta, Delhi and Madras)	'big' towns	'small' towns	s. 1	s. 2	comb.	
(1)	(2)	(3)	(4)	(5)	(6)	(7)	(8)
(a) base : all households							
1. river, lake and spring	—	0.23	3.84	4.27	3.87	4.07	
2. tanks and ponds	0.03	2.24	31.32	34.33	32.85	33.59	
3. wells	0.24	0.69	4.13	3.96	6.16	5.06	
4. tube-wells	—	0.02	1.96	2.54	1.42	1.98	
5. municipal water	11.48	11.00	28.67	51.10	51.20	51.15	
6. other sources	0.37	0.34	3.44	3.80	4.50	4.15	
7. total	12.12	14.52	73.36	100.00	100.00	100.00	
(b) base : households of each stratum group							
1. river, lake and spring	—	1.56	5.30	4.27	3.87	4.07	
2. tanks and ponds	0.20	15.25	42.98	34.33	32.85	33.59	
3. wells	1.86	4.70	5.70	3.96	6.16	5.06	
4. tube-wells	—	0.12	0.25	2.54	1.42	1.98	
5. municipal water	95.05	76.05	38.58	51.10	51.20	51.15	
6. other sources	2.89	2.32	7.19	3.80	4.50	4.15	
7. total	100.00	100.00	100.00	100.00	100.00	100.00	
8. number of sample households	600	564	1676	1420	1420	2840	
(c) base : households under each source							
1. river, lake and spring	—	5.64	94.36	—	—	100.00	95
2. tanks and ponds	0.08	6.71	93.21	—	—	100.00	803
3. wells	4.67	13.66	81.67	—	—	100.00	122
4. tube-wells	—	8.55	91.45	—	—	100.00	84
5. municipal water	23.53	21.84	54.63	—	—	100.00	1627
6. other sources	6.19	5.77	88.04	—	—	100.00	109
7. total	12.12	14.52	73.36	—	—	100.00	2840
8. s. 1	11.99	16.32	71.69	100.00	—	—	1420
9. s. 2	12.24	12.80	74.96	—	100.00	—	1420

National Sample Survey

TABLE (2.15) : PERCENTAGE DISTRIBUTION OF POPULATION BY SOURCE OF DRINKING WATER AND STRATUM GROUP : ALL INDIA : URBAN

number of sample blocks : 582

number of sample persons : 14210

source of drinking water	stratum group			all India			number of sample persons
	cities (Bombay, Calcutta, Delhi and Madras)	'big' towns	'small' towns	s. 1	s. 2	comb.	
(1)	(2)	(3)	(4)	(5)	(6)	(7)	(8)
(a) base : all persons							
1. river, lake and spring	—	0.05	3.96	4.14	3.90	4.01	
2. tanks and ponds	0.00	2.29	34.27	38.04	35.22	36.56	
3. wells	0.20	0.69	4.58	4.09	6.73	5.47	
4. tube-wells	—	0.03	1.90	2.16	1.69	1.93	
5. municipal water	10.13	10.49	27.63	48.52	48.02	48.25	
6. other sources	0.45	0.30	3.03	3.05	4.44	3.78	
7. total	10.78	13.85	75.37	100.00	100.00	100.00	
(b) base : persons of each stratum group							
1. river, lake and spring	—	0.39	5.26	4.14	3.90	4.01	
2. tanks and ponds	0.00	16.52	45.47	38.04	35.22	36.56	
3. wells	1.87	4.96	6.07	4.09	6.73	5.47	
4. tube-wells	—	0.19	2.52	2.16	1.69	1.93	
5. municipal water	93.99	75.76	36.66	48.52	48.02	48.25	
6. other sources	4.14	2.18	4.02	3.05	4.44	3.78	
7. total	100.00	100.00	100.00	100.00	100.00	100.00	
8. number of sample persons	3129	2803	8278	7105	7105	14210	
(c) base : persons under each source							
1. river, lake and spring	—	1.34	98.66	—	—	100.00	443
2. tanks and ponds	0.00	6.26	93.74	—	—	100.00	3963
3. wells	3.68	12.58	83.74	—	—	100.00	642
4. tube-wells	—	1.39	98.61	—	—	100.00	420
5. municipal water	20.98	21.75	57.27	—	—	100.00	8207
6. other sources	11.80	8.00	80.20	—	—	100.00	535
7. total	10.78	13.85	75.37	—	—	100.00	14210
8. s. 1	9.71	12.93	77.36	100.00	—	—	7198
9. s. 2	11.75	14.70	73.55	—	100.00	—	7012

TABLE (2.16) : PERCENTAGE DISTRIBUTION OF HOUSEHOLDS BY SOURCE OF DRINKING WATER AND MONTHLY HOUSEHOLD EXPENDITURE LEVEL : ALL INDIA : URBAN

number of sample blocks : 582

number of sample households : 2840

source of drinking water	monthly household expenditure level (in rupees)										all levels		
	0—25	26—50	51—100	101—200	201—300	301—400	401—500	501—700	701 and above	s. 1	s. 2	comb.	
	(1)	(2)	(3)	(4)	(5)	(6)	(7)	(8)	(9)	(10)	(11)	(12)	(13)
(a) base : all households													
1. river, lake and spring	0.61	0.70	2.22	0.32	0.15	—	0.07	—	—	4.27	3.87	4.07	
2. tanks and ponds	1.68	8.52	14.20	6.84	1.48	0.41	0.28	0.08	0.10	34.33	32.85	33.59	
3. wells	0.32	0.64	1.89	1.10	0.46	0.27	—	0.07	0.31	3.96	6.16	5.06	
4. tube-wells	0.13	0.53	0.88	0.31	0.05	0.04	—	0.04	—	2.54	1.42	1.98	
5. municipal water	1.71	8.25	18.10	15.44	4.71	1.06	0.73	0.48	0.67	51.10	51.20	51.15	
6. other sources	0.11	0.91	1.41	1.27	0.27	0.11	0.03	0.00	0.04	3.80	4.50	4.15	
7. total	4.56	19.55	38.70	25.28	7.12	1.89	1.11	0.67	1.12	100.00	100.00	100.00	
(b) base : households of each expenditure level													
1. river, lake and spring	12.84	3.53	5.56	1.43	2.17	—	5.96	—	—	4.27	3.87	4.07	
2. tanks and ponds	35.38	43.67	34.98	28.90	20.78	21.36	23.82	11.35	9.32	34.33	32.85	33.59	
3. wells	6.77	3.25	4.73	4.66	6.51	13.98	—	10.27	30.11	3.96	6.16	5.06	
4. tube-wells	2.80	2.69	2.20	1.33	0.67	1.94	—	5.95	—	2.54	1.42	1.98	
5. municipal water	39.80	42.27	49.00	58.31	66.15	57.09	67.71	71.89	56.63	51.10	51.20	51.15	
6. other source	2.41	4.59	3.53	5.37	3.72	5.63	2.51	0.54	3.94	3.80	4.50	4.15	
7. total	100.00	100.00	100.00	100.00	100.00	100.00	100.00	100.00	100.00	100.00	100.00	100.00	
8. number of sample households	118	501	993	767	263	76	45	37	40	1420	1420	2840	

TABLE (2.16) (Contd.): PERCENTAGE DISTRIBUTION OF HOUSEHOLDS BY SOURCE OF DRINKING WATER AND MONTHLY HOUSEHOLD EXPENDITURE LEVEL: ALL INDIA: URBAN

number of sample blocks : 582

number of sample households : 2840

source of drinking water	monthly household expenditure level (in rupees)										all levels			number of sample households
	0—25	26—50	51—100	101—200	201—300	301—400	401—500	501—700	701 and above	s. 1	s. 2	comb.		
	(1)	(2)	(3)	(4)	(5)	(6)	(7)	(8)	(9)	(10)	(11)	(12)	(13)	
(c) base : households under each source														
1. river, lake and spring	14.91	17.16	54.47	7.95	3.79	—	1.72	—	—	—	—	100.00	95	
2. tanks and ponds	5.01	25.86	41.72	20.42	4.42	1.21	0.84	0.23	0.29	—	—	100.00	803	
3. wells	6.33	12.73	37.30	21.75	9.16	5.24	—	1.38	6.11	—	—	100.00	122	
4. tube wells	6.69	26.95	44.24	15.80	2.42	1.86	—	2.04	—	—	—	100.00	84	
5. municipal water	3.68	16.34	38.16	26.86	9.20	2.11	1.55	0.96	1.14	—	—	100.00	1627	
6. other sources	2.76	21.96	34.03	30.49	6.40	2.58	0.71	0.09	0.98	—	—	100.00	109	
7. total	4.56	19.55	38.70	25.28	7.12	1.89	1.11	0.67	1.12	—	—	100.00	2840	
8. s. 1	4.07	19.49	43.31	20.55	7.96	1.73	0.86	0.77	1.26	100.00	—	—	1420	
9. s. 2	5.03	19.64	37.51	26.62	6.32	2.05	1.49	0.56	0.78	—	100.00	—	1420	

Housing Condition

TABLE (2.17): PERCENTAGE DISTRIBUTION OF HOUSEHOLDS BY LATRINE TYPE
AND STRATUM GROUP: ALL INDIA: URBAN

number of sample blocks : 582				number of sample households : 2840			
latrine type	stratum group			all India			number of sample households
	cities (Calcutta, Bombay, Delhi and Madras)	'big' towns	'small' towns	s. 1	s. 2	comb.	
(1)	(2)	(3)	(4)	(5)	(6)	(7)	(8)
(a) base : all households							
1. no built-up latrine	1.51	3.05	37.54	41.80	42.42	42.10	
2. built-up latrine in individual use	1.62	3.30	15.37	18.44	22.14	20.29	
3. built-up latrine in common use with other households	8.99	8.17	20.45	39.76	35.44	37.61	
4. total	12.12	14.52	73.36	100.00	100.00	100.00	
(b) base : households of each stratum group							
1. no built-up latrine	12.42	20.96	51.20	41.80	42.42	42.10	
2. built-up latrine in individual use	13.39	22.71	20.95	18.44	22.14	20.29	
3. built-up latrine in common use with other households	74.19	56.33	27.85	39.76	35.44	37.61	
4. total	100.00	100.00	100.00	100.00	100.00	100.00	
5. number of sample households	600	564	1676	1420	1420	2840	
(c) base : households under each type							
1. no built-up latrine	3.57	7.24	89.19	—	—	100.00	1048
2. built-up latrine in individual use	7.99	16.27	75.74	—	—	100.00	631
3. built-up latrine in common use with other households	23.91	21.77	54.32	—	—	100.00	1161
4. total	12.12	14.52	73.36	—	—	100.00	2840
5. s. 1	11.99	16.32	71.69	100.00	—	—	1420
6. s. 2	12.24	12.80	74.96	—	100.00	—	1420

TABLE (2.18): PERCENTAGE DISTRIBUTION OF HOUSEHOLDS BY STRUCTURE TYPE AND MONTHLY HOUSEHOLD EXPENDITURE LEVEL: ALL INDIA: URBAN

number of sample blocks : 582

number of sample households : 2840

structure type	monthly household expenditure level (in rupees)							all levels		
	0-25	26-50	51-100	101-200	201-300	301 and above	s. 1	s. 2	comb.	
	(1)	(2)	(3)	(4)	(5)	(6)	(7)	(8)	(9)	(10)
(a) base : all households										
1. all katcha	1.52	5.85	9.74	2.70	0.12	0.15	21.29	18.87	20.08	
2. katcha plinth and wall, and fabricated roof	0.55	3.23	5.94	2.63	0.77	0.03	12.06	14.24	13.15	
3. pucca plinth katcha, wall and roof of any type	0.71	1.03	3.34	2.29	0.39	0.06	8.96	6.68	7.82	
4. pucca plinth and wall, and katcha roof	0.07	0.84	2.95	2.00	0.69	0.11	7.47	5.85	6.66	
5. pucca plinth and wall, and fabricated roof	0.56	2.74	7.60	5.69	1.38	0.60	23.81	13.33	18.57	
6. all pucca	0.28	1.38	5.01	2.74	2.75	0.93	10.82	15.36	13.09	
7. others	0.87	4.48	4.12	7.23	1.02	2.91	15.59	25.67	20.63	
8. total	4.56	19.55	38.70	25.28	7.12	4.79	100.00	100.00	100.00	
(b) base : households of each expenditure level										
1. all katcha	41.80	31.91	26.27	11.74	0.88	3.27	21.29	18.87	20.08	
2. katcha plinth and wall, and fabricated roof	10.54	16.07	14.82	8.85	5.63	0.64	12.06	14.24	13.15	
3. pucca plinth katcha, wall and roof of any type	13.72	5.11	7.02	5.61	2.87	1.20	8.96	6.68	7.82	
4. pucca plinth and wall, and katcha roof	1.27	4.19	4.68	5.65	9.43	2.32	7.47	5.85	6.66	
5. pucca plinth and wall, and fabricated roof	10.68	13.63	19.81	24.74	41.37	12.94	23.81	13.33	18.57	
6. all pucca	5.37	6.84	15.03	11.92	19.91	16.61	10.82	15.36	13.09	
7. others	16.62	22.25	12.37	31.49	19.91	63.02	15.59	25.67	20.63	
8. total	100.00	100.00	100.00	100.00	100.00	100.00	100.00	100.00	100.00	
9. number of sample households	118	501	993	767	263	198	1420	1420	2840	

TABLE (2.18) (Contd.): PERCENTAGE DISTRIBUTION OF HOUSEHOLDS BY STRUCTURE TYPE AND MONTHLY HOUSEHOLD EXPENDITURE LEVEL: ALL INDIA: URBAN

structure type	monthly household expenditure level (in rupees)						all levels			number of sample households
	0—25	26—50	51—100	101—200	201—300	301—above	s. 1	s. 2	comb.	
	(2)	(3)	(4)	(5)	(6)	(7)	(8)	(9)	(10)	
	(1)	(2)	(3)	(4)	(5)	(6)	(7)	(8)	(9)	
(c) base: households under each type										
1. all katcha	10.71	31.60	43.08	13.27	0.60	0.74	—	—	100.00	542
2. katcha plinth and wall, and fabricated roof	4.75	27.99	42.71	17.60	6.69	0.26	—	—	100.00	290
3. pucca plinth, katcha wall and roof of any type	12.28	17.66	40.19	22.15	6.77	0.95	—	—	100.00	132
4. pucca plinth and wall, and katcha roof	1.28	16.32	30.15	25.09	25.09	2.07	—	—	100.00	135
5. pucca plinth and wall, and fabricated roof	2.54	12.55	30.20	25.99	25.99	2.73	—	—	100.00	511
6. all pucca	2.17	10.68	38.79	21.21	21.21	5.94	—	—	100.00	255
7. others	3.87	20.05	18.45	32.37	12.25	13.01	—	—	100.00	975
8. total	4.56	19.55	38.70	25.28	7.12	4.79	—	—	100.00	2840
9. s. 1	4.07	19.49	43.31	20.55	7.96	4.62	100.00	—	—	1420
10. s. 2	5.03	19.64	37.51	26.62	6.32	4.88	—	100.00	—	1420

TABLE (2.19) : PERCENTAGE DISTRIBUTION OF POPULATION BY STRUCTURE TYPE AND MONTHLY HOUSEHOLD EXPENDITURE LEVEL : ALL INDIA : URBAN

number of sample blocks : 582		number of sample persons : 14210							
structure type	monthly household expenditure level (in rupees)							all levels	
	0—25	26—50	51—100	101—200	201—300	301 and above	s. 1	s. 2	comb.
	(1)	(2)	(3)	(4)	(5)	(6)	(7)	(8)	(9)
(a) base : all persons									
1. all katcha	1.11	5.11	10.35	3.69	0.13	0.22	21.50	19.78	20.61
2. katcha plinth and wall, and fabricated roof	0.17	2.12	4.74	2.66	1.43	0.10	11.31	11.15	11.22
3. pucca plinth katcha wall and roof of any type	0.06	0.44	2.11	2.60	1.09	1.14	6.15	6.68	6.44
4. pucca plinth and wall, and katcha roof	0.01	0.57	1.35	1.91	0.39	0.11	3.00	5.58	4.34
5. pucca plinth and wall, and fabricated roof	0.17	1.57	6.24	6.97	2.20	1.11	18.29	18.24	18.26
6. all pucca	0.08	0.56	2.49	3.23	1.29	1.84	9.47	9.49	9.49
7. others	0.26	1.99	9.99	8.22	3.95	5.23	30.28	29.08	29.64
8. total	1.86	12.36	37.27	29.28	10.48	8.75	100.00	100.00	100.00
(b) base : persons of each expenditure level									
1. all katcha	59.12	41.33	27.78	12.60	1.24	2.51	21.50	19.78	20.61
2. katcha plinth and wall, and fabricated roof	9.15	17.15	12.72	9.10	13.68	1.12	11.31	11.15	11.22
3. pucca plinth katcha wall and roof of any type	3.10	3.53	5.66	8.86	10.37	1.64	6.15	6.68	6.44
4. pucca plinth and wall, and katcha roof	0.79	4.61	3.62	6.54	3.68	1.27	3.00	5.58	4.34
5. pucca plinth and wall, and fabricated roof	9.20	12.71	16.75	23.80	21.00	12.71	18.29	18.24	18.26
6. all pucca	4.46	4.54	6.67	11.01	12.32	20.98	9.47	9.49	9.49
7. others	14.18	16.13	26.80	28.09	37.71	59.77	30.28	29.08	29.64
8. total	100.00	100.00	100.00	100.00	100.00	100.00	100.00	100.00	100.00
9. number of sample persons	211	1526	4474	4519	1799	1681	7198	7012	14210

TABLE (2.19) (Contd.): PERCENTAGE DISTRIBUTION OF POPULATION BY STRUCTURE TYPE AND MONTHLY HOUSEHOLD EXPENDITURE LEVEL: ALL INDIA: URBAN

number of sample blocks : 582

number of sample persons : 14210

structure type	monthly household expenditure level (in rupees)							all levels			number of sample persons
	0—25	26—50	51—100	101—200	201—300	301 and above	s. 1	s. 2	comb.		
	(2)	(3)	(4)	(5)	(6)	(7)	(8)	(9)	(10)	(11)	
(c) base : persons under each type											
1. all katcha	5.36	24.78	50.25	17.91	0.63	1.07	—	—	100.00	2473	
2. katcha plinth and wall, and fabricated roof	1.52	18.88	42.22	23.74	12.77	0.87	—	—	100.00	1342	
3. pucca plinth, katcha wall and roof of any type	0.90	6.79	32.81	40.36	16.90	2.24	—	—	100.00	671	
4. pucca plinth and wall, and katcha roof	0.34	13.12	31.06	44.05	8.87	2.56	—	—	100.00	670	
5. pucca plinth and wall, and fabricated roof	0.94	8.60	34.17	38.15	12.05	6.09	—	—	100.00	2644	
6. all pucca	0.88	5.91	26.22	34.02	13.61	19.36	—	—	100.00	1362	
7. others	0.89	6.72	33.68	27.74	13.33	17.64	—	—	100.00	5048	
8. total	1.86	12.36	37.27	29.28	10.48	8.75	—	—	100.00	14210	
9. s. 1	1.61	12.63	37.65	28.18	11.70	8.23	100.00	—	—	7198	
10. s. 2	2.11	12.10	36.90	31.46	9.36	8.07	—	100.00	—	7012	

National Sample Survey

TABLE (2.20) : PERCENTAGE DISTRIBUTION OF HOUSEHOLDS BY STRUCTURE TYPE AND PERIOD BUILT SINCE : ALL INDIA : URBAN

structure type	number of sample blocks : 582						number of sample households : 2840			
	period built since						all level			number of sample households
	below 1 year	1 year to below 4 years	4 years to below 12 years	12 years to below 22 years	22 years and above	not recorded	s. 1	s. 2	comb.	
(1)	(2)	(3)	(4)	(5)	(6)	(7)	(8)	(9)	(10)	(11)
(a) base : all households										
1. all katcha	0.46	2.43	4.33	3.79	6.91	2.16	21.29	18.87	20.08	
2. katcha plinth and wall, and fabricated roof	0.13	0.28	2.40	1.35	6.99	2.00	12.06	14.24	13.15	
3. pucca plinth, katcha wall and roof of any type	0.00	0.29	0.50	0.64	5.05	1.34	8.96	6.68	7.82	
4. pucca plinth and wall, and katcha roof	0.10	0.31	0.65	0.72	3.57	1.31	7.47	5.85	6.66	
5. pucca plinth and wall, and fabricated roof	0.33	0.60	1.49	2.49	6.16	7.50	23.81	13.33	18.57	
6. all pucca	0.25	0.28	0.76	0.80	8.38	2.62	10.82	15.36	13.09	
7. not reported	0.52	1.43	3.25	3.52	3.68	8.23	15.59	25.67	20.63	
8. total	1.79	5.62	13.38	13.31	40.74	25.16	100.00	100.00	100.00	
(b) base : period built since										
1. all katcha	24.48	39.18	32.83	28.46	19.31	8.57	21.29	18.87	20.08	
2. katcha plinth and wall, and fabricated roof	6.97	6.66	18.22	10.11	13.27	7.94	12.06	14.24	13.15	
3. pucca plinth, katcha wall and roof of any type	0.19	4.90	3.80	4.83	7.48	5.32	8.96	6.68	7.82	
4. pucca plinth and wall, and katcha roof	6.96	5.45	4.66	5.41	2.45	5.23	7.47	5.85	6.66	
5. pucca plinth and wall, and fabricated roof	14.51	11.30	11.04	18.67	14.47	29.82	23.81	13.33	18.57	
6. all pucca	22.20	5.71	5.79	6.05	10.05	10.42	10.82	15.36	13.09	
7. not reported	24.69	26.80	23.66	26.47	32.97	32.70	15.59	25.67	20.63	
8. total	100.00	100.00	100.00	100.00	100.00	100.00	100.00	100.00	100.00	
9. number of sample households	86	236	602	1150	756	10	1420	1420	2840	

Housing Condition

TABLE (2.20) (*Contd.*): PERCENTAGE DISTRIBUTION OF HOUSEHOLDS BY STRUCTURE TYPE AND PERIOD BUILT SINCE: ALL INDIA: URBAN

		number of sample blocks : 582					number of sample households : 2840				
structure type	period built since						all level			number of sample households	
	below 1 year	1 year to below 4 years	4 years to below 12 years	12 years to below 22 years	22 years and above	not recorded	s. 1	s. 2	comb.		
(1)	(2)	(3)	(4)	(5)	(6)	(7)	(8)	(9)	(10)	(11)	
(e) base : structure type											
1. all katcha	2.22	11.57	20.57	18.00	37.39	10.25	—	—	100.00	542	
2. katcha plinth and wall, and fabricated roof	1.09	2.46	20.74	11.65	46.77	17.29	—	—	100.00	290	
3. pucca plinth, katcha wall and roof of any type	0.03	4.92	8.66	11.04	52.37	22.98	—	—	100.00	132	
4. pucca plinth and wall, and katcha roof	2.42	7.66	15.84	17.59	24.36	32.13	—	—	100.00	135	
5. pucca plinth and wall, and fabricated roof	1.79	3.31	8.11	13.58	32.21	41.00	—	—	100.00	511	
6. all pucca	2.75	3.24	8.65	9.13	46.47	29.76	—	—	100.00	255	
7. not reported	1.75	4.70	10.68	11.59	44.22	27.06	—	—	100.00	975	
8. total	1.79	5.62	13.38	13.31	40.74	25.16	—	—	100.00	2840	
9. s. 1	2.01	5.26	15.12	12.15	38.15	27.31	100.00	—	—	1420	
10. s. 2	1.57	5.98	11.64	14.47	43.33	23.01	—	100.00	—	1420	

TABLE (2.21): PERCENTAGE DISTRIBUTION OF POPULATION BY STRUCTURE TYPE AND PERIOD BUILT SINCE: ALL INDIA: URBAN

		number of sample blocks : 582					number of sample persons : 14210				
structure type	period built since						all level			number of sample persons	
	below 1 year	1 year to below 4 years	4 years to below 12 years	12 years to below 22 years	22 years and above	not recorded	s. 1	s. 2	comb.		
(1)	(2)	(3)	(4)	(5)	(6)	(7)	(8)	(9)	(10)	(11)	
(a) base : all persons											
1. all katcha	0.43	2.01	4.28	3.76	8.12	2.01	21.50	19.78	20.61		
2. katcha plinth and wall, and fabricated roof	0.14	0.22	2.41	1.43	5.47	1.55	11.31	11.15	11.22		
3. pucca plinth, katcha wall and roof of any type	0.00	0.38	0.46	0.92	3.74	0.94	6.15	6.68	6.44		
4. pucca plinth and wall, and katcha roof	0.02	0.35	0.63	0.50	1.05	1.79	3.00	5.58	4.34		
5. pucca plinth and wall, and fabricated roof	0.31	0.56	1.84	2.97	5.68	6.90	18.29	18.24	18.26		
6. all pucca	0.11	0.48	1.17	1.04	4.21	2.48	9.47	9.49	9.49		
7. not reported	0.54	0.96	4.07	4.05	12.44	7.58	30.28	29.08	29.64		
8. total	1.55	4.96	14.86	14.67	40.71	23.25	100.00	100.00	100.00		

National Sample Survey

TABLE (2.21) (Contd.) : PERCENTAGE DISTRIBUTION OF POPULATION BY STRUCTURE TYPE AND PERIOD BUILT SINCE : ALL INDIA : URBAN

		number of sample blocks : 582					number of sample persons : 14210				
structure type	period built since							all level		number of sample persons	
	below 1 year	1 year to below 4 years	4 years to below 12 years	12 years to below 22 years	22 years and above	not recorded	s. 1	s. 2	comb.		
(1)	(2)	(3)	(4)	(5)	(6)	(7)	(8)	(9)	(10)	(11)	
(b) base : period built since											
1. all katcha	32.35	33.78	29.83	25.62	21.81	8.64	21.50	19.78	20.61		
2. katcha plinth and wall, and fabricated roof	9.76	5.12	16.91	9.75	14.44	6.66	11.31	11.15	11.22		
3. pucca plinth, katcha wall and roof of any type	0.22	7.52	2.80	6.25	9.76	4.05	6.15	6.68	6.44		
4. pucca plinth and wall, and katcha roof	2.21	7.14	3.99	3.40	3.00	7.71	3.00	5.58	4.34		
5. pucca plinth and wall, and fabricated roof	19.93	12.28	12.33	20.28	15.65	29.67	18.29	18.24	18.26		
6. all pucca	9.15	10.60	7.76	7.09	11.15	10.66	9.47	9.49	9.49		
7. not reported	26.38	18.97	26.38	27.61	24.19	32.61	30.28	29.08	29.64		
8. total	100.00	100.00	100.00	100.00	100.00	100.00	100.00	100.00	100.00		
9. number of sample persons	3488	369	1054	1086	2089	6124	7198	7012	14210		
(c) base : structure type											
1. all katcha	2.03	9.38	20.05	17.58	41.55	9.41	—	—	100.00	2473	
2. katcha plinth and wall, and fabricated roof	1.21	1.87	20.76	12.29	50.56	13.31	—	—	100.00	1342	
3. pucca plinth, katcha wall and roof of any type	0.03	5.71	6.87	13.73	59.55	14.11	—	—	100.00	671	
4. pucca plinth and wall, and katcha roof	0.50	7.72	13.92	11.04	27.08	39.74	—	—	100.00	670	
5. pucca plinth and wall, and fabricated roof	1.67	2.98	9.70	15.67	33.59	36.39	—	—	100.00	2644	
6. all pucca	1.15	4.92	11.89	10.58	46.12	25.25	—	—	100.00	1362	
7. not reported	1.99	3.54	15.03	14.98	36.41	28.05	—	—	100.00	5048	
8. total	1.55	4.96	14.86	14.67	40.71	23.25	—	—	100.00	14210	
9. s. 1	1.53	5.20	15.48	13.75	39.74	24.30	100.00	—	—	7198	
10. s. 2	1.57	4.72	14.24	15.59	41.68	22.20	—	100.00	—	7012	

APPENDIX III

FACSIMILE OF THE SCHEDULES OF INVESTIGATION

CENTRAL*
STATE

ORIGINAL*
DUPLICATE

GOVERNMENT OF INDIA NATIONAL SAMPLE SURVEY : 1956-57

RURAL*
URBAN

Household Schedule 1.1 : Income and Expenditure

(Eleventh Round)

[3] classificatory characters		[19] housing condition	
1.	household size	1.	plinth type
2.	„ land possessed (acres 0.00)	2.	wall type
3.	„ land cultivated (acres 0.00)	3.	roof type
4.	„ type code	4.	latrine type
5.	„ livelihood type code	5.	drinking water
6.	„ industry occupation code	6.	period built since
7.	„ expenditure code	7.	period repaired since
8.	per capita expenditure code	8.	number of rooms
9.	religion code	9.	floor space (sq.ft.)
10.	group code	10.	rented or not
11.	caste code	11.	monthly rent (Rs. 00)
12.	mother tongue code	12.	cost of repair and maintenance during the year ended on . . (Rs. 00)
		13.	approximate valuation as on date of survey

