

## 8. Electricity



The 1,500 megawatt Jhkari Hydroelectric Plant, India's largest underground hydro-electric project; Satluj River, Himachal Pradesh (Photo: Satluj Jal Vidyut Nigam Ltd, India)



## 8. ELECTRICITY

### Concepts and Definitions

**Small Hydro Power-** In India, hydro power projects with a station capacity of up to 25 megawatt (MW) each fall under the category of small hydro power (SHP).

SHP projects are classified based on capacity as follows.

- Micro hydro : up to 100 kW
- Mini hydro : 101–1000 kW (i.e. 1 MW)
- Small hydro : above 1 MW up to 25 MW

**Cogeneration(also combined heat and power, CHP)** - is the use of a heat engine or a power station to simultaneously generate both electricity and useful heat.

**Bagasse** - is the fibrous residue remaining after sugarcane or sorghum stalks are crushed to extract their juice and is currently used as a renewable resource

**Waste to Energy-** The National Bio-energy Board (NBB), Ministry of New and Renewable Energy, is developing a National Master Plan (NMP) for waste-to-energy as one of the activities. The primary objective of NMP is to provide additional power generation capacity in a decentralized manner through projects for energy recovery from urban and industrial wastes in a cost effective and proven manner.

**Geothermal Energy-** is the energy available as heat emitted from within the earth's crust, usually in the form of hot water or steam.

**Tidal Energy/ Tidal power,** is a form of hydropower that converts the energy of tides into electricity or other useful forms of power.

Although not yet widely used, tidal power has potential for future electricity generation. Tides are more predictable than wind energy and solar power. Historically, tide mills have been used, both in Europe and on the Atlantic coast of North America. The earliest occurrences date from the Middle Ages, or even from Roman times.

**Plant Load Factor-** is a measure of the output of a power plant compared to the maximum output it could produce.

**Utilities** -A **public utility** (usually just **utility**) is an organization that maintains the infrastructure for a public service (often also providing a service using that infrastructure).

**Mega Unit (MU)**- is one million units of electricity where one unit is equal to one Kilowatt hour.

**Giga-** is equal to  $10^9$ .

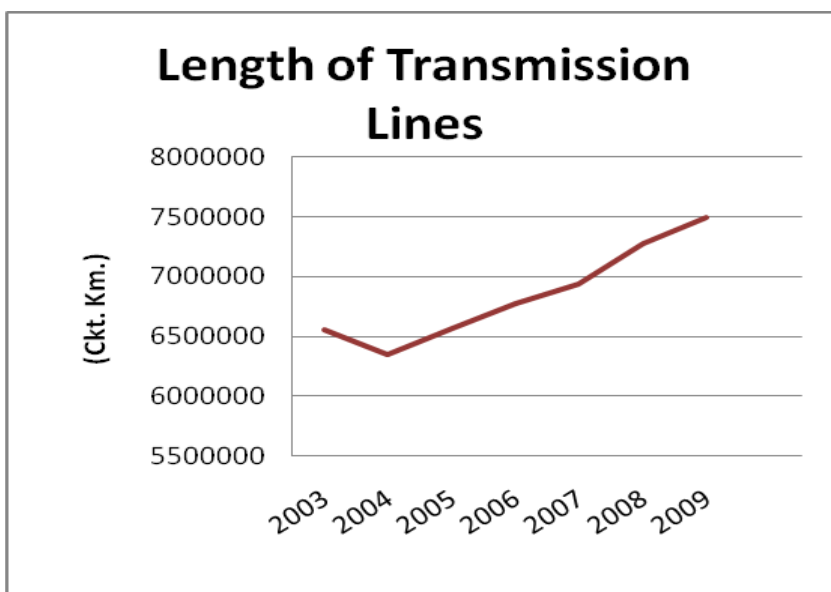
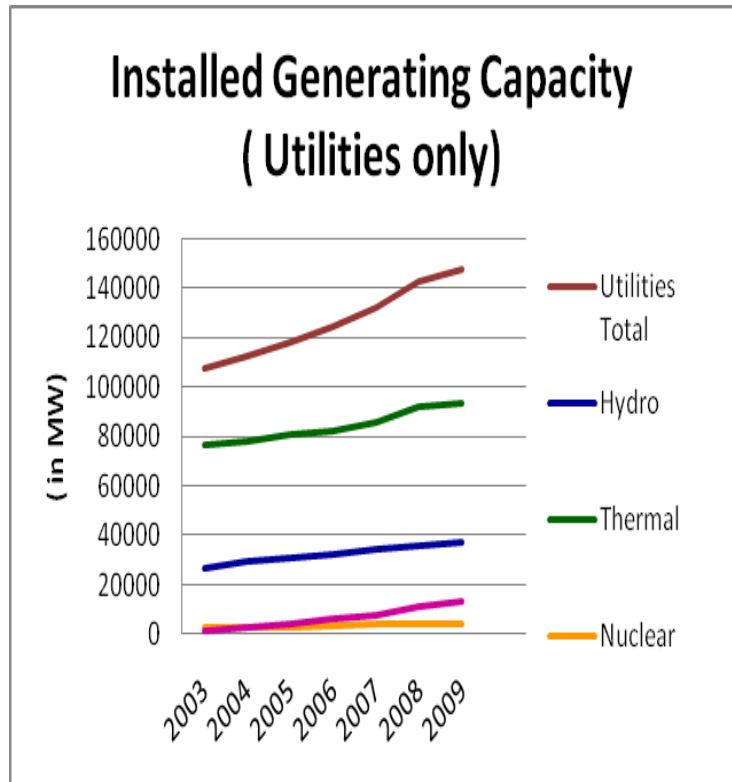
## 8. ELECTRICITY

8.1 Central Electricity Authority in the M/o Power, is the nodal ministry for data. Unless otherwise stated highlights of the sector given below are mainly based on summary Table No. 6.0 on Trends in Important Indicators of the Electricity Infrastructure.

### Access/Capacity

8.2 The noticeable feature of installed generating capacity is higher growth rates shown by renewable energy during 2003 to 2009 as compared to fossil fuels. The installed generating capacity in utilities increased from 1.1 lakh megawatt to 1.5 lakh megawatt showing a CAGR of 5.41%. During the same period installed capacity in non utilities has shown a higher CAGR of 6.62% with increasing share of gas and wind energy based generation.

Access to power has increased in terms of per capita electricity consumption.



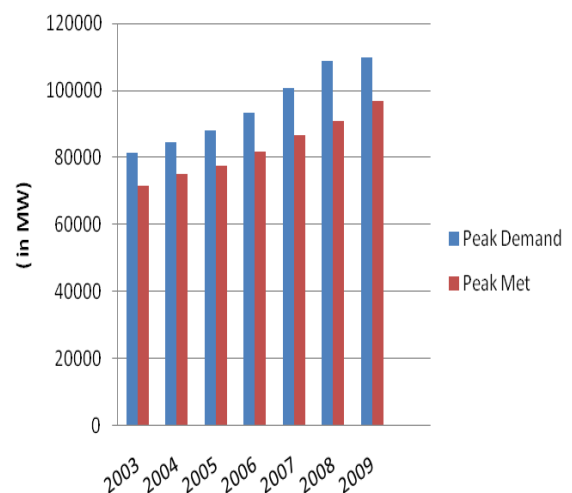
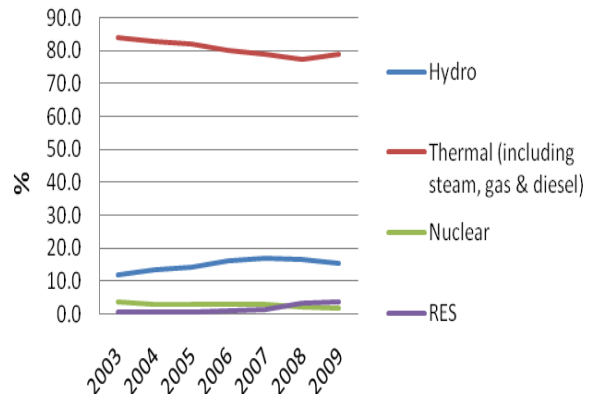
8.3 Length of transmission and distribution lines increased from 6.6 million ckt. km to 7.5 million ckt. km. showing a CAGR of 2.27% during 2003 to 2009; while electricity sales grew at 7.19% during the same period, indicating a deficit in transmission capacity.

**Quality**

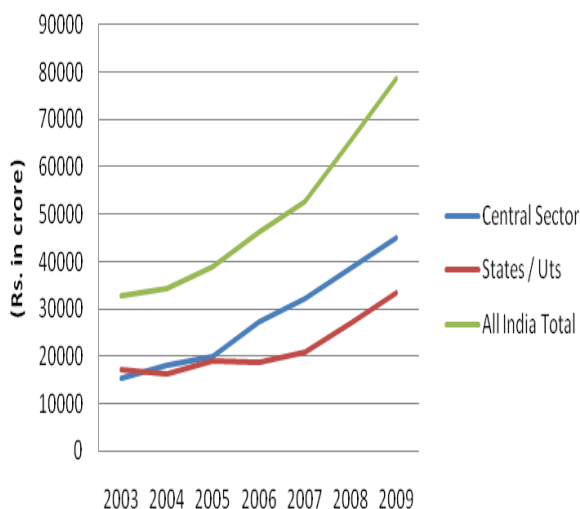
8.4 Percentage share of hydro and renewable power has grown in total energy production during 2003-2009 indicating increasing share of non polluting energy consumption. The combined share of hydro and renewable energy sources increased from 12.5% in 2003 to 19% in 2009.

8.5 Energy loss in transmission is showing a declining trend, it decreased from 32% in 2003 to 27% in 2008 indicating quality improvement in transmission network. There is a sizeable gap between peak power demand and peak supply, which seems to be increasing over the years; calling for improving energy efficiency in consumption and improvement in size of the distribution network. Insufficient distribution capacity can lead to heavy load on lines at peak hours resulting in tripping and disruption of supply.

**Percentage Share in Total Electricity Generation**



**Budget Allocation**

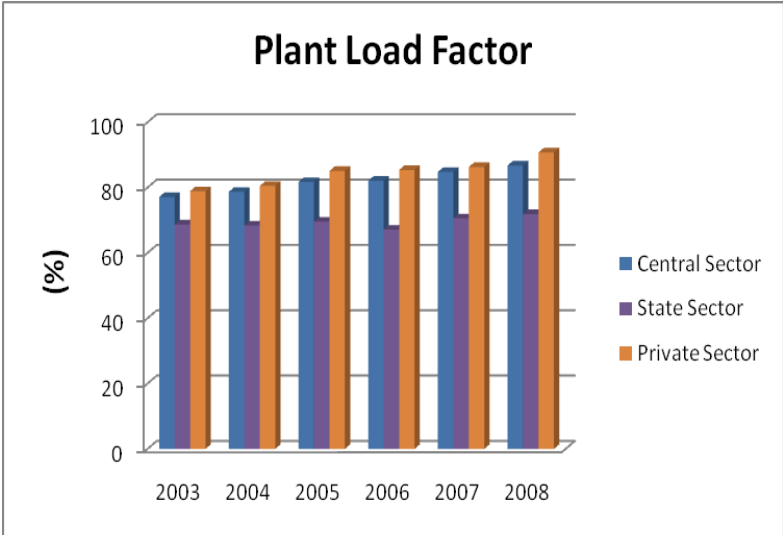


**Fiscal Cost**

8.6 Budgetary support to the sector has grown at a CAGR of 16%, while budgetary expenditure has grown at the rate of 17% during 2003-2009. Average cost of electricity supply fluctuated between 335.49 paise per unit and 358.83 paise per unit during the period.

**Capacity Utilisation**

8.7 Plant load factor of thermal power plants has been gradually increasing over the years for central, state and private sectors. But plant load factor of nuclear power plants has gone down from 79.3% in 2003 to 46.4% in 2008.



**Affordability**

8.8 Table 8E.1 of this publication gives state wise and sector wise average rates of electricity as on 31.3.09. CEA is presently not compiling all India average electricity tariff, which has to be a weighted average of individual rates.

However some idea of affordability of electricity at all India level can be obtained in terms of average realization per unit of electricity sales and wholesale price index. Average realization per unit of electricity sales increased from 255 paise in 2003 to 272 paise in 2006 and wholesale price index for electricity ( base 1993-94) increased from 238 during 2002-03 to 275.9 during 2008-09.





**Table 8.0: Trends of Important Indicators of Electricity Infrastructure  
(2002-03 to 2008-09)**

Sl. No.	Description	2003	2004	2005	2006	2007	2008	2009	CAGR %
( Reference Date / Period - As on 31st March for Stock Variables - Financial Year ending on 31st March for Flow Variables)									
<b>A ACCESS / CAPACITY</b>									
<b>I Installed Generating Capacity(MW)</b>									
1	Utilities	107877	112684	118426	124287	132329	143061	147965	5.41
	Hydro	26767	29507	30942	32326	34654	35909	36878	5.49
	Thermal (including steam, gas & diesel)	76762	77969	80903	82410	86014	91907	93725	3.38
	Nuclear	2720	2720	2770	3360	3900	4120	4120	7.17
	RES	1628	2488	3811	6191	7761	11125	13242	41.81
2	Non-Utilities (having plants 1MW & above)	18362	18740	19103	21468	22335	24986	26980	6.62
	Hydro	51.1	61.97	58.93	59.98	60.5	60.5	NR	3.43
	Steam	9094.16	8585.28	8903.16	10816.28	11397.52	11763.99	NR	5.28
	Diesel	6736.1	7195.47	7126.86	7418.14	7723.35	8647.92	NR	5.12
	Gas	2385.15	2745.74	2866.4	3025.15	2976	4209.23	NR	12.03
	Wind	95.11	151.85	147.22	148.66	177.67	304.75	NR	26.22
3	No. of Power Plants								
	Hydro	-	335	332	341	352	184	NR	-13.91
	Thermal	-	433	438	445	450	440	NR	0.40
	Nuclear	-	-	9	9	9	17	NR	23.61
<b>II Electricity Consumption / Access to electricity</b>									
4	Electricity Sales(GWh (MU))(Utilities & Non-Utilities)								
	Total	393460	418334	447993	474451	525672	577960	596943	^ 7.19
	Domestic	83355	89736	95659	100090	111002	120918	124562	^ 6.92
	Commercial	25437	28201	31381	35965	40220	46685	48047	^ 11.18
	Industrial	168821	181970	199448	214121	241216	265407	274531	^ 8.44
	Traction	8797	9210	9495	9943	10800	11108	11615	^ 4.74
	Agriculture	84486	87089	88555	90292	99023	104182	107835	^ 4.15
	Others	22564	22128	23455	24040	23410	29660	30353	^ 5.07
5	Per Capita Consumption of Electricity (KWh)	373.3	390.7	412.0	429.8	469.2	508.5	517.8	5.61
<b>III Transmission &amp; Distribution Capacity</b>									
6	Length of Transmission Lines(Ckt. Km.)	6553261	6344858	6570819	6774671	6939894	7278946	7497314	2.27
7	Transformers (in number)								
	Step-Up	2009	1952	2535	2932	2731	2663	NR	5.80
	Step-Down	29826	32291	35290	38958	39404	38937	NR	5.48

RES - Hydro stations with capacity of up to and including 25 MW are covered under RES and >25 MW capacity are covered in conventional hydropower.

Per Capita Consumption=Electricity Sales/Estimated mid year population

NR : Not Released

^ Provisional

**Table 8.0: Trends of Important Indicators of Electricity Infrastructure (2002-03 to 2008-09)**

Sl. No.	Description	2003	2004	2005	2006	2007	2008	2009	CAGR %
( Reference Date / Period - As on 31st March for Stock Variables - Financial Year ending on 31st March for Flow Variables)									
<b>B</b>	<b>QUALITY</b>								
<b>IV</b>	<b>% Share of Source wise energy in Total Production (For Utilities)</b>								
8	Hydro	12.0	13.3	14.2	16.3	16.9	16.7	15.3	4.08
9	Thermal (including steam, gas & diesel)	83.9	82.9	82.1	79.9	78.8	77.5	79.0	-0.98
10	Nuclear	3.6	3.1	2.9	2.8	2.8	2.3	2.0	-9.72
11	RES	0.5	0.6	0.8	1.1	1.5	3.5	3.7	41.06
12	Energy Loss in Transformation, Transmission & Distribution & unaccounted for (%)	32.4	32.5	31.3	30.4	28.7	27.2	NR	-3.44
13	Electrical Accidents # (in number)	9157	3301	8277	7258	6546	9291	NR	0.29
14	Peak Demand (in MW)	81492	84574	87906	93255	100715	108866	109809	5.10
15	Peak Met (in MW)	71547	75066	77652	81792	86818	90793	96685	5.15
16	Surplus / Deficit (in MW)	-9945	-9508	-10254	-11463	-13897	-18073	-13124	4.73
<b>C</b>	<b>FISCAL COST</b>								
<b>V</b>	<b>Plan wise Outlay / Expenditure for Power Sector (Rs. In crore)</b>								
17	Allocation								
	Central Sector	15491.72	18116.06	20042.01	27419.42	32051.8	38489.55	45052.2	19.47
	States / UTs	17264.79	16196.78	18985.9	18676.15	20719.94	26941.27	33493.96	11.68
	All India Total	32756.51	34312.84	39027.91	46095.57	52771.74	65430.82	78546.16	15.69
18	Expenditure								
	Central Sector	10993.42	14327.5	17604.15	21045.93	27271.04	29426.99	39817.58	23.92
	States / UTs	17102.58	17836.89	17035.28	17330.07	22187.74	27243.1	33173.44	11.67
	All India Total	28096.00	32164.39	34639.43	38376.00	49458.78	56670.09	72991.02	17.25
19	Utilisation %								
	Central Sector	71.0	79.1	87.8	76.8	85.1	76.5	88.4	3.73
	States / UTs	99.1	110.1	89.7	92.8	107.1	101.1	99.0	0.00
	All India Total	85.8	93.7	88.8	83.3	93.7	86.6	92.9	1.34

RES - Hydro stations with capacity of up to and including 25 MW are covered under RES and >25 MW capacity are covered in conventional hydropower.

NR : Not Released

# Based on data of responding states.

**Table 8.0 (contd.) : Trends of Important Indicators of Electricity Infrastructure (2002-03 to 2008-09)**

Sl. No.	Description	2003	2004	2005	2006	2007	2008	2009	CAGR %
( Reference Date / Period - As on 31st March for Stock Variables - Financial Year ending on 31st March for Flow Variables)									
<b>D UTILISATION</b>									
<b>VI Actual Generation of Electricity (GWh (MU))</b>									
20	<b>Utilities</b>	532693	565102	594456	623819	670654	722626	746626	5.79
	Hydro	64014	75242	84610	101494	113502	120877	114081	10.11
	Thermal (including steam, gas & diesel)	446778	468678	488329	498358	528490	560072	590101	4.75
	Nuclear	19390	17780	17011	17324	18802	16957	14713	-4.50
	RES	2511	3402	4506	6643	9860	25210	27731	49.23
21	<b>Non-Utilities(having plants 1MW &amp;above)</b>	64849.9	68173.12	71416.62	73639.7	81799.75	90476.69	NR	6.89
	Hydro	90.32	97.49	112.77	236.47	217.81	202.21	NR	17.49
	Steam	42229.66	39610.29	44016.99	46264.87	56184.04	53568.52	NR	4.87
	Diesel	11155.33	13403.31	12039.86	12253.22	9974.85	10737.96	NR	-0.76
	Gas	10198.16	14874.38	15052.05	14664.72	15207.17	25584.58	NR	20.20
	Wind	1176.43	187.65	194.95	220.42	215.88	383.43	NR	-20.09
<b>VII Plant Load Factor (%)</b>									
22	Thermal								
	Central Sector	77.1	78.7	81.7	82.1	84.8	86.7	NR	2.38
	State Sector	68.7	68.4	69.6	67.1	70.6	71.9	NR	0.91
	Private Sector	78.9	80.5	85.1	85.4	86.3	90.8	NR	2.84
23	Nuclear								
	Central Sector	79.3	73.8	70.7	63.2	57.5	46.4	NR	-10.16
<b>E AFFORDABILITY</b>									
24	Average Cost of Electricity Supply (in Paise/ Unit) \$	335.49	349.29	358.83	348	-	-	-	1.23
25	Average Realisation (including agriculture) (in Paise/ Unit)@	255.2	338.3	282.6	272	-	-	-	2.15
26	Wholesale Price Index (Base = 1993-94)	238	248.8	253	263.4	271.7	273	275.9	2.49

NR : Not Released

\$ For 14 SEBs

@ For 9 SEBs

Source : All India Electricity Statistics published by CEA, M/o Power  
Annual Report published by CEA, M/o Power

**Table 8A.1 : Regionwise and Statewise Installed Generating Capacity of Electricity (Utilities) in India as on 31st March**

States/UTs	(In GW)										% Change in Total Installed Capacity (2008-09 over 2007-08)
	Hydro		Thermal		Nuclear		New & Renewable		Total		
	2008	2009	2008	2009	2008	2009	2008	2009	2008	2009	
Delhi	0	0	0.93	0.92	0	0	0	0	0.93	0.92	-1.29
Haryana	0.88	0.88	2.21	2.15	0	0	0.07	0.07	3.16	3.10	-1.90
Himachal Pradesh	0.78	0.78	0.00	0.00	0	0	0.15	0.19	0.93	0.96	4.16
Jammu & Kashmir	0.33	0.78	0.18	0.18	0	0	0.11	0.11	0.63	1.08	71.91
Punjab	2.32	2.32	2.38	2.63	0	0	0.16	0.16	4.86	5.11	5.14
Rajasthan	0.99	0.99	2.99	2.99	0	0	0.54	0.73	4.52	4.70	4.06
Uttar Pradesh	0.52	0.53	4.38	4.12	0	0	0.17	0.40	5.08	5.05	-0.53
Uttarakhand	1.65	1.65	0.00	0.00	0	0	0.08	0.11	1.73	1.76	1.35
Central Sector NR	5.50	5.59	9.36	10.46	1.18	1.18	0.00	0.00	16.04	17.23	7.42
<b>Sub-Total (NR)</b>	<b>12.98</b>	<b>13.52</b>	<b>22.43</b>	<b>23.45</b>	<b>1.18</b>	<b>1.18</b>	<b>1.29</b>	<b>1.77</b>	<b>37.88</b>	<b>39.91</b>	<b>5.37</b>
Chhattisgarh	0.12	0.12	2.53	2.92	0	0	0.16	0.17	2.81	3.21	14.21
D & N Haveli	0	0	0	0	0	0	0	0	0	0	0
Daman & Diu	0	0	0	0	0	0	0	0	0	0	0
Goa	0	0	0.05	0.05	0	0	0.03	0.03	0.08	0.08	0
Gujarat	0.77	0.77	6.72	7.36	0	0	0.86	1.40	8.35	9.53	14.08
Madhya Pradesh	1.70	1.70	2.66	2.81	0	0	0.12	0.26	4.48	4.77	6.47
Maharashtra	3.08	3.33	9.54	9.54	0	0	1.96	2.16	14.58	15.03	3.08
Central Sector WR	1.52	1.55	9.37	10.47	1.84	1.84	0.00	0.00	12.73	13.86	8.82
<b>Sub-Total (WR)</b>	<b>7.20</b>	<b>7.47</b>	<b>30.87</b>	<b>33.14</b>	<b>1.84</b>	<b>1.84</b>	<b>3.13</b>	<b>4.02</b>	<b>43.04</b>	<b>46.48</b>	<b>7.99</b>
Andhra Pradesh	3.53	3.57	5.26	4.98	0	0	0.66	0.67	9.45	9.22	-2.41
Karnataka	3.30	3.52	2.68	2.68	0	0	1.64	1.88	7.63	8.08	6.00
Kerala	1.76	1.77	0.43	0.43	0	0	0.10	0.12	2.29	2.32	1.38
Lakshadweep	0	0	0.01	0.01	0	0	0	0	0.01	0.01	0
Puducherry	0	0	0.03	0.03	0	0	0	0	0.03	0.03	0
Tamil Nadu	2.09	2.09	4.57	4.66	0	0	3.95	4.38	10.61	11.13	4.95
Central Sector SR	0	0	6.44	7.19	1.10	1.10	0	0	7.54	8.29	10.00
<b>Sub-Total (SR)</b>	<b>10.69</b>	<b>10.95</b>	<b>19.42</b>	<b>19.99</b>	<b>1.10</b>	<b>1.10</b>	<b>6.35</b>	<b>7.05</b>	<b>37.55</b>	<b>39.09</b>	<b>4.10</b>
A & N Island	0	0	0.06	0.06	0	0	0.01	0.01	0.07	0.07	0
Bihar	0	0	0.54	0.54	0	0	0.05	0.05	0.59	0.59	0
Jharkhand	0.13	0.13	1.62	1.62	0	0	0	0	1.75	1.75	0
Orissa	2.07	2.07	0.42	0.42	0	0	0.01	0.03	2.50	2.52	0.87
DVC	0.14	0.14	3.19	3.19	0	0	0	0	3.33	3.33	0
Sikkim	0	0	0.01	0.01	0	0	0.04	0.04	0.04	0.05	4.53
West Bengal	1.02	1.02	5.47	5.77	0	0	0.10	0.10	6.59	6.89	4.55
Central Sector ER	0.57	0.58	6.91	7.72	0	0	0	0	7.48	8.30	10.94
<b>Sub-Total (ER)</b>	<b>3.93</b>	<b>3.94</b>	<b>18.21</b>	<b>19.32</b>	<b>0.00</b>	<b>0.00</b>	<b>0.21</b>	<b>0.23</b>	<b>22.36</b>	<b>23.50</b>	<b>5.11</b>

**Table 8A.1(Contd.) : Regionwise and Statewise Installed Generating Capacity of Electricity (Utilities) in India as on 31st March**

States/UTs	Hydro		Thermal		Nuclear		New & Renewable		Total		(In GW)
	2008	2009	2008	2009	2008	2009	2008	2009	2008	2009	% Change in Total Installed Capacity (2008-09 over 2007-08)
	Arunachal Prd.	0	0	0.02	0.02	0	0	0.05	0.05	0.06	0.06
Assam	0.10	0.10	0.34	0.34	0	0	0	0.03	0.45	0.47	5.60
Manipur	0	0	0.05	0.05	0	0	0.01	0.01	0.05	0.05	0
Meghalaya	0.16	0.16	0	0	0	0	0.03	0.03	0.19	0.19	0
Mizoram	0	0	0.05	0.05	0	0	0.02	0.02	0.07	0.07	0
Nagaland	0	0	0	0	0	0	0.03	0.03	0.03	0.03	0
Tripura	0	0	0.13	0.13	0	0	0.02	0.02	0.15	0.15	0
Central Sector NER	0.86	0.87	0.38	0.42	0	0	0	0	1.24	1.29	4.74
<b>Sub-Total (NER)</b>	<b>1.12</b>	<b>1.13</b>	<b>0.97</b>	<b>1.01</b>	<b>0.00</b>	<b>0.00</b>	<b>0.15</b>	<b>0.17</b>	<b>2.23</b>	<b>2.31</b>	<b>3.75</b>
<b>Total States</b>	<b>27.46</b>	<b>28.43</b>	<b>59.45</b>	<b>60.66</b>	<b>0</b>	<b>0</b>	<b>11.13</b>	<b>13.24</b>	<b>98.03</b>	<b>102.33</b>	<b>4.38</b>
<b>Total Central</b>	8.45	8.59	32.46	36.26	4.12	4.12	0	0	45.03	48.97	8.76
<b>Total All India</b>	<b>35.91</b>	<b>37.02</b>	<b>91.90</b>	<b>96.92</b>	<b>4.12</b>	<b>4.12</b>	<b>11.13</b>	<b>13.24</b>	<b>143.06</b>	<b>151.30</b>	<b>5.76</b>
<b>% Share of Sourcewise Installed Generation Capacity to Total Installed Generation Capacity</b>	25.1	24.5	64.2	64.1	2.9	2.7	7.8	8.8	100.0	100.0	

Sub-totals/Totals may not tally due to rounding off.

Source : Energy Statistics, published by M/o Statistics & PI

**Table 8A.2 : Statewise and Sourcewise Installed Capacity of Grid Interactive Renewable Power as on 31st March 2009**

Sl. No.	States/UTs							(in MW)	
		Bio Power (woody biomass)	Wind Power	Small Hydro Power	Waste to Energy	Solar power	Total Capacity	% Share of State /UT in Total Capacity	
1	Andhra Pradesh	343.55	122.5	180.83	35.25	0.1	682.23	4.71	
2	Arunachal Pradesh			61.32		0.02	61.34	0.42	
3	Assam			27.11			27.11	0.19	
4	Bihar			54.6			54.6	0.38	
5	Chhattisgarh	156.1		18.05			174.15	1.20	
6	Goa			0.05			0.05	0.0003	
7	Gujarat	0.5	1566.5	7	0.5		1574.5	10.87	
8	Haryana	6		62.7			68.7	0.47	
9	Himachal Pradesh			230.92			230.92	1.59	
10	Jammu & Kashmir			111.83			111.83	0.77	
11	Jharkhand			4.05			4.05	0.03	
12	Karnataka	294.18	1327.4	563.45	1		2186.03	15.09	
13	Kerala		27	133.87		0.02	160.89	1.11	
14	Madhya Pradesh	1	212.8	71.16	2.75	0.1	287.81	1.99	
15	Maharashtra	185.5	1938.9	211.33	1		2336.73	16.13	
16	Manipur			5.45			5.45	0.04	
17	Meghalaya			31.03			31.03	0.21	
18	Mizoram			24.47			24.47	0.17	
19	Nagaland			28.67			28.67	0.20	
20	Orissa		3.2	44.3			47.5	0.33	
21	Punjab	28		123.9	9.25	0.32	161.74	1.12	
22	Rajasthan	31.3	738.4	23.85		0.15	793.7	5.48	
23	Sikkim			47.11			47.11	0.33	
24	Tamil Nadu	333.7	4304.5	90.05	4.25	0.05	4732.55	32.67	
25	Tripura			16.01			16.01	0.11	
26	Uttar Pradesh	372.5		25.1	5	0.38	402.98	2.78	
27	Uttarakhand			127.92		0.05	127.97	0.88	
28	West Bengal			98.4		0.05	98.45	0.68	
29	Others		1.1	5.25		0.88	7.23	0.05	
<b>India Total</b>		<b>1752.33</b>	<b>10242.3</b>	<b>2429.78</b>	<b>59</b>	<b>2.12</b>	<b>14485.53</b>	<b>100.00</b>	
<b>% Share of Sourcewise Capacity to Total Capacity</b>		<b>12.10</b>	<b>70.71</b>	<b>16.77</b>	<b>0.41</b>	<b>0.01</b>	<b>100.00</b>		

Source: Material supplied by M/o New & Renewable Energy

**Table 8A.2 (contd.) : Statewise and Sourcewise Installed Capacity of Grid Interactive Renewable Power as on 31st March 2008**

Sl. No.	States/UTs	(in MW)						
		Bio Power (woody biomass)	Wind Power	Small Hydro Power	Waste to Energy	Solar power	Total Capacity	% Share of State /UT in Total Capacity
1	Andhra Pradesh	334.25	122.5	180.83	32	0.1	669.68	5.40
2	Arunachal Pradesh			45.24		0.02	45.26	0.36
3	Assam			27.11			27.11	0.22
4	Bihar			50.4			50.4	0.41
5	Chhattisgarh	146.3		18.05			164.35	1.33
6	Goa			0.05			0.05	0.0004
7	Gujarat	0.5	1252.9	7	0.5		1260.9	10.17
8	Haryana	6		62.7			68.7	0.55
9	Himachal Pradesh			162.62			162.62	1.31
10	Jammu & Kashmir			111.83			111.83	0.90
11	Jharkhand			4.05			4.05	0.03
12	Karnataka	262.28	1011.4	464	1		1738.68	14.02
13	Kerala		10.5	123.12		0.02	133.64	1.08
14	Madhya Pradesh	1	187.7	71.16	2.75		262.71	2.12
15	Maharashtra	114	1755.9	211.33	1	0.1	2082.23	16.79
16	Manipur			5.45			5.45	0.04
17	Meghalaya			31.03			31.03	0.25
18	Mizoram			17.47			17.47	0.14
19	Nagaland			28.67			28.67	0.23
20	Orissa		3.2	32.3			35.5	0.29
21	Punjab	28		123.9	9.25	0.32	161.47	1.30
22	Rajasthan	23.3	538.8	23.85		0.15	586.1	4.73
23	Sikkim			39.11			39.11	0.32
24	Tamil Nadu	290.5	3873.4	89.7	4.25	0.05	4257.9	34.33
25	Tripura			16.01			16.01	0.13
26	Uttar Pradesh	200.5		25.1	5	0.38	230.98	1.86
27	Uttarakhand			105.12		0.05	105.17	0.85
28	West Bengal		1.1	98.4		0.05	99.55	0.80
29	Others			5.25		0.88	6.13	0.05
<b>India Total</b>		<b>1406.63</b>	<b>8757.4</b>	<b>2180.85</b>	<b>55.75</b>	<b>2.12</b>	<b>12402.75</b>	<b>100.00</b>
<b>% Share of Sourcewise Capacity to Total Capacity</b>		<b>11.34</b>	<b>70.61</b>	<b>17.58</b>	<b>0.45</b>	<b>0.02</b>	<b>100.00</b>	

Source: Material supplied by M/o New & Renewable Energy

**Table 8A.3 : Statewise Length of Transmission and Distribution Lines, Number of Transformers and Aggregate Capacity as on 31st March 2008**

States/UTs	Total Length of Trans-mission & distribution Lines (in Ckt Km.)	Number of Transformers			
		Step-Up		Step-Down	
		Number	Aggregate Capacity (kVA)	Number	Aggregate Capacity (kVA)
Haryana	198351	19	2495000	1187	19510370
Himachal Pradesh	78869	80	619257	378	2545388
Jammu & Kashmir	93456	58	341000	116	609950
Punjab	320773	114	7549480	1295	30629500
Rajasthan	533785	42	3807905	4383	37182420
Uttar Pradesh	500988	62	5627500	3577	46141630
Uttarakhand	79991	40	1168500	418	2115800
Chandigarh	2205	1	1500	48	729500
Delhi	32446	24	1788000	595	20041000
Central Sector (NR)	15417	170	19825610	201	21720158
<b>Sub-Total (NR)</b>	<b>1856281</b>	<b>610</b>	<b>43223752</b>	<b>12198</b>	<b>181225716</b>
Gujarat	608908	215	10803220	2230	46407600
Madhya Pradesh	596950	140	3927442	4587	41540400
Chhattisgarh	167637	24	2492800	981	10736650
Maharashtra	793258	118	15246325	4448	76921820
Goa	14782	2	106000	94	1415100
D & N Haveli	2482	0	0	28	667000
Daman & Diu	1260	0	0	28	572000
Central Sector (WR)	12196	42	9653000	75	11518569
<b>Sub-Total (WR)</b>	<b>2197473</b>	<b>541</b>	<b>42228787</b>	<b>12471</b>	<b>189779139</b>
Andhra Pradesh	819607	190	10366560	4445	51292300
Karnataka	638890	191	8419810	1863	34765400
Kerala	280849	97	2637150	713	13385100
Tamil Nadu	695565	206	8313962	2360	40576760
Lakshadweep	285	18	7440	84	6849
Puducherry	6004	2	30000	2	10000
Central Sector (SR)	15136	264	8554097	165	18100475
<b>Sub-Total (SR)</b>	<b>2456336</b>	<b>968</b>	<b>38329019</b>	<b>9632</b>	<b>158136884</b>
Bihar	135514	16	596300	105	3440400
Jharkhand	49309	22	2621500	360	3215750
Orissa	170657	120	6924900	1213	10543840
West Bengal	199434	99	5689412	1584	24285855
DVC	5908	25	3374550	106	5913520
A & N Island	3629	32	112190	5	18550
Sikkim	5156	34	38125	19	59750
Central Sector (ER)	11598	51	8685630	160	18035358
<b>Sub-Total (ER)</b>	<b>581205</b>	<b>399</b>	<b>28042607</b>	<b>3552</b>	<b>65513023</b>
Assam	79355	46	949640	32	1667500
Manipur	13326	7	51800	71	409700
Meghalaya	20833	12	228600	132	670156
Nagaland	14309	18	23250	72	274850
Tripura	23969	15	169140	98	552950
Arunachal Pradesh	16532	21	19710	60	61115
Mizoram	15141	27	21390	1054	997409
Central Sector (NER)	4186	67	2533470	32	1636840
<b>Sub-Total (NER)</b>	<b>187651</b>	<b>213</b>	<b>3997000</b>	<b>1551</b>	<b>6270520</b>
<b>Total Central Sector</b>	<b>58533</b>	<b>594</b>	<b>49251807</b>	<b>633</b>	<b>71011400</b>
<b>Total All India</b>	<b>7278946</b>	<b>2731</b>	<b>155821165</b>	<b>39404</b>	<b>600925282</b>

Source: All India Electricity Statistics, Published by CEA, M/o Power



**Table 8A.4 : Statewise Lenth of Transmission and Distribution Lines, Number of Transformers and Aggregate Capacity as on 31st March 2007**

States/UTs	Total Length of Trans-mission & distribution Lines (in Ckt Km.)	Number of Transformers			
		Step-Up		Step-Down	
		Number	Aggregate Capacity (kVA)	Number	Aggregate Capacity (kVA)
Haryana	192963	19	2495000	1245	21952700
Himachal Pradesh	75890	80	1439502	254	2906960
Jammu & Kashmir	41774	58	341000	144	5051080
Punjab	315536	118	7889683	1381	32842400
Rajasthan	505797	54	3811505	4736	39217020
Uttar Pradesh	500765	62	5627500	3580	45974200
Uttarakhand	72437	40	1540500	431	2147800
Chandigarh	<b>2176</b>	<b>0</b>	<b>0</b>	<b>50</b>	<b>849500</b>
Delhi	32446	24	1788000	623	20321500
Central Sector (NR)	14922	170	19817610	224	26768500
<b>Sub-Total (NR)</b>	<b>1754706</b>	<b>625</b>	<b>44750300</b>	<b>12668</b>	<b>198031660</b>
Gujarat	491823	79	10282000	2292	50964600
Madhya Pradesh	586238	200	5183121	2913	40356150
Chhattisgarh	155426	57	2809743	1008	11542550
Maharashtra	774814	118	15665125	4433	74780220
Goa	14726	2	106000	102	1781950
D & N Haveli	1203	0	0	28	667000
Daman & Diu	2482	0	0	30	592000
Central Sector (WR)	10157	50	10293000	75	17352000
<b>Sub-Total (WR)</b>	<b>2036869</b>	<b>506</b>	<b>44338989</b>	<b>10881</b>	<b>198036470</b>
Andhra Pradesh	803367	188	10921210	4451	51305000
Karnataka	638712	198	9381410	1863	34765400
Kerala	270707	97	2637150	713	13524600
Tamil Nadu	668818	206	8313962	2526	44834210
Lakshadweep	285	18	7780	91	7438
Puducherry	6004	2	30000	44	899000
Central Sector (SR)	13207	264	8554097	155	20393800
<b>Sub-Total (SR)</b>	<b>2401100</b>	<b>973</b>	<b>39845609</b>	<b>9843</b>	<b>165729448</b>
Bihar	132302	17	824700	931	7401620
Jharkhand	49309	22	2621500	360	3213750
Orissa	170061	59	3582700	1217	10785440
West Bengal	198563	100	7559412	1623	24841355
DVC	5908	25	3374550	106	5913520
A & N Island	3629	31	111810	566	82855
Sikkim	5156	34	38125	19	59750
Central Sector (ER)	8490	45	7475630	156	19439000
<b>Sub-Total (ER)</b>	<b>573418</b>	<b>333</b>	<b>25588427</b>	<b>4978</b>	<b>71737290</b>
Assam	79355	46	949640	32	1667500
Manipur	12987	7	51800	72	430250
Meghalaya	19118	12	228600	145	713705
Nagaland	14309	18	23250	72	274850
Tripura	14238	10	147640	92	540950
Arunachal Pradesh	14216	39	20031	72	255970
Mizoram	15026	27	21390	57	253700
Central Sector (NER)	4187	67	2533476	25	1336000
<b>Sub-Total (NER)</b>	<b>173436</b>	<b>226</b>	<b>3975827</b>	<b>567</b>	<b>5472925</b>
<b>Total Central Sector</b>	<b>50963</b>	<b>596</b>	<b>48673813</b>	<b>635</b>	<b>85289300</b>
<b>Total All India</b>	<b>6939529</b>	<b>2663</b>	<b>158499152</b>	<b>38937</b>	<b>639007793</b>

Source: All India Electricity Statistics, Published by CEA, M/o Power

**Table 8A.5 : Regionwise / Statewise Number of Hydro Power Stations and their Capacity as on 31.3.08**

Region / State	Owner	Power Plants (number)	Total Capacity (MW)
Joint Projects	B.B.M.B	8	2865.5
Himachal Pradesh	HPSEB	4	752
	JaiPrakash	1	300
	H P Ltd		
	Malana HE Project	1	86
Jammu & Kashmir Central Sector	J&K SPDC	2	210
	NHPC	8	5498
	THDC	1	1000
Punjab	SJVNL	1	1500
	PSEB	7	1141
Rajasthan	RRJVUNL	4	411
Uttar Pradesh	UPJVNL	4	501
Uttarakhand	UJVNL	10	1652.15
	JPPVL	1	
<b>Total Northern Region</b>		<b>52</b>	<b>13030.65</b>
Chhattisgarh	ChSEB	1	120
Gujarat	SSNNL	2	1990
	G.S.E.C.L	2	540
	MPGCL	10	875
Madhya Pradesh	MAHAGE	9	2638
Maharashtra	NCO		
	TATA	4	444
Central Sector	NDHC	2	1520
<b>Total Western Region</b>		<b>30</b>	<b>7143</b>
Andhra Pradesh	APGENCO	13	3582.75
Karnataka	KPCL	18	3286.4
Kerala	KSEB	14	1756.5
Tamil Nadu	TNEB	24	2093.95
<b>Total Southern Region</b>		<b>69</b>	<b>10719.6</b>
D.V.C	D.V.C	3	144
Central Sector	NHPC	2	570
Jharkhand	JH.S.E.B	1	130
Orissa	O.H.P.C	11	2033.5
West Bengal	WBSEB	5	1022
<b>Total Eastern Region</b>		<b>22</b>	<b>3899.5</b>
Assam	A.P.G.C	1	100
Meghalaya	Meg.SEb	3	156
Central Sector	NEEPCO	6	860
	NHPC	1	105
<b>Total North Eastern Region</b>		<b>11</b>	<b>1116</b>
<b>Total All India Hydro</b>		<b>184</b>	<b>35908.75</b>

Source: All India Electricity Statistics, Published by CEA, M/o Power

**Table 8A.6 : Regionwise / Statewise Number of Thermal Power Stations and their Capacity as on 31.3.08**

Region / State	Owner	Power Plants (number)	Total Capacity (MW)
Chandigarh	Govt (Chandigarh)	1	2
Delhi	IPGCL	3	994.9
	Pr PCL	4	
Haryana	HGPCorpn	10	2143.92
Himachal Pradesh	HPSEB	1	0.13
Jammu & Kashmir	J&K PDC	5	183.94
Central Sector	NTPC	16	9362
Punjab	PESB	5	2380
Rajasthan	RRVUNL	10	2863.8
Uttar Pradesh	UPRVUNL	11	4380
<b>Northern Region Total</b>		<b>66</b>	<b>22310.69</b>
Chhattisgarh	CESB	4	2530
Goa	O.P.Jindal	1	48
	Reliance Salgaocar	1	
Gujarat	Torrent Power Co.Ltd	4	6721.2
	Essar Pvt	2	
	G.S.E.C.L	23	
	G.S.E.G.C.L	4	
	GIPCL (Pvt)	3	
	GSECL	6	
	Gujarat Peguthan	2	
	GMD Corpn.	1	
	Surat E Co. Pvt.	1	
	Madhya Pradesh	MPPGCL	
Maharashtra	BSES	1	9542
	MAHAGENCO	18	
	TATA	4	
Central Sector	NTPC	9	9372
	NTPC&ONGC	2	
<b>Western Region Total</b>		<b>93</b>	<b>30995.7</b>
Andhra Pradesh	APGENCO	8	5255
	BSES	2	
	GVK Ind	4	
	Kondapalli co	2	
	L.V.S.Power Corpn.	1	
	Vemagiri Power	2	
	SPGL (Spectrum)	2	
	Jindal (Pvt Co)	1	
Shrirayalseema Ltd. (Pvt.)	1		
KPCL	2		
Tanir Bavi Power, Pvt. Co.	2		
Karnataka	TATA Pvt. Co.	1	
	VVNL	1	
	BSES	2	430.44
	Kasargode Pvt. Co.	1	
Kerala	KSEB	2	

**Table 8A.6(contd.) : Regionwise / Statewise Number of Thermal Power Stations and their Capacity as on 31.3.08**

Region / State	Owner	Power Plants (number)	Total Capacity (MW)
Lakshadweep	Govt.Deptt	11	9.97
Puducherry	PPCL (Gas)	2	32.5
Central Sector	Neyveli Lignite	4	6440
	NTPC	5	
Tamil Nadu	Balaji Power Corpn.Pvt.Co.	1	4565.76
	GMR Vasavipower	1	
	PPN Power Co.Ltd.	2	
	Samalpatti Power Co.	1	
	St CMS Electric Company	1	
	Aban Power	2	
	Valentharvy Power Co. Ltd	2	
	TNEB	13	
<b>Southern Region Total</b>		<b>45</b>	<b>19418.09</b>
A&N Islands	Govt.Deptt	34	60.05
	Suryachakra PC	1	
Bihar	BSEB	3	540
D.V.C	D.V.C	8	3190
Central Sector	NTPC	7	6910
Total Central Sector (NTPC+DVC)			10100
Jharkhand	TATA Pvt. Co.	1	1620
	Jh.S.E.B	3	
	Tenughat VN Ltd.	1	
Orissa	OPGC Ltd	1	420
Sikkim	Govt.(Sikkim)	2	5
West Bengal	C.E.S.C. Pvt.	5	5468.57
	D.P.L.	4	
	Dishergarh Pvt.	7	
	Sunderban Pvt.	1	
	WBPDC	7	
	WBSEB	15	
<b>Eastern Region Total</b>		<b>100</b>	<b>18213.62</b>
Arunachal Pradesh	Govt.(Arunachal Pradesh)	1	15.88
Assam	A.P.G.C.L	9	344.19
	DLF Power Co.	3	
Manipur	Govt. Deptt.	27	45.41
Meghalaya	Meg.SEb	5	2.05
Mizoram	Govt.Deptt	36	51.86
Central Sector	NEEPCO	3	375
Nagaland	Govt.Deptt	5	2
Tripura	Govt.Deptt	13	132.35
<b>North Eastern Region Total</b>		<b>102</b>	<b>968.73</b>
<b>Total All India Thermal</b>		<b>449</b>	<b>91906.83</b>

Source: All India Electricity Statistics, Published by CEA, M/o Power

**Table 8A.7 : Regionwise / Statewise Number of Nuclear Power Stations and their Capacity as on 31.3.08**

Region / State	Owner	Power Plants (number)	Total Capacity (MW)
Rajasthan	Nuclear Power Corp.	4	740
Uttar Pradesh	Nuclear Power Corp.	2	440
<b>Northern Region Total</b>		<b>6</b>	<b>1180</b>
Gujarat	Nuclear Power Corp.	2	440
Maharashtra	Nuclear Power Corp.	4	1400
<b>Western Region Total</b>		<b>6</b>	<b>1840</b>
Karnataka	Nuclear Power Corp.	3	660
Tamil Nadu	Nuclear Power Corp.	2	440
<b>Southern Region Total</b>		<b>5</b>	<b>1100</b>
<b>Total All India Nuclear</b>		<b>17</b>	<b>4120</b>

Source: All India Electricity Statistics, Published by CEA, M/o Power

**Table 8A.8 : Regionwise and Statewise Villages Electrified**

States/UTs	Total Inhabited Villages as per 2001 Census	Villages Electrified		(in numbers)
				% Change
		As on 31.3.07	As on 31.3.08	
Haryana	6764	6764	6764	0
Himachal Pradesh	17495	17169	17183	0.08
Jammu & Kashmir	6417	6304	6304	0
Punjab	12278	12278	12278	0
Rajasthan	39753	26676	27155	1.80
Uttar Pradesh	97942	83558	86316	3.30
Uttarakhand	15761	15055	15213	1.05
Chandigarh	23	23	23	0
Delhi	158	158	158	0
<b>Sub-Total (NR)</b>	<b>196591</b>	<b>167985</b>	<b>171394</b>	<b>2.03</b>
Gujarat	18066	17986	17993	0.04
Madhya Pradesh	52117	50213	50213	0
Chhattisgarh	19744	18830	18877	0.25
Maharashtra	41095	36038	36296	0.72
Goa	347	347	347	0
D & N Haveli	70	70	70	0
Daman & Diu	23	23	23	0
<b>Sub-Total (WR)</b>	<b>131462</b>	<b>123507</b>	<b>123819</b>	<b>0.25</b>
Andhra Pradesh	26613	26613	26613	0
Karnataka	27481	27125	27126	0.004
Kerala	1364	1364	1364	0
Tamil Nadu	15400	15400	15400	0
Lakshadweep	8	8	8	0
Puducherry	92	92	92	0
<b>Sub-Total (SR)</b>	<b>70958</b>	<b>70602</b>	<b>70603</b>	<b>0.00</b>
Bihar	39015	20620	20620	0
Jharkhand	29354	9119	9119	0
Orissa	47529	26535	26535	0
West Bengal	37945	34555	36380	5.28
A & N Island	501	326	326	0
Sikkim	450	425	425	0
<b>Sub-Total (ER)</b>	<b>154794</b>	<b>91580</b>	<b>93405</b>	<b>1.99</b>
Assam	25124	19741	19741	0
Manipur	2315	1942	1966	1.24
Meghalaya	5782	3428	3428	0
Nagaland	1278	823	823	0
Tripura	858	491	491	0
Arunachal Pradesh	3863	2195	2195	0
Mizoram	707	570	570	0
<b>Sub-Total (NER)</b>	<b>39927</b>	<b>29190</b>	<b>29214</b>	<b>0.08</b>
<b>Total All India</b>	<b>593732</b>	<b>482864</b>	<b>488435</b>	<b>1.15</b>

Source: All India Electricity Statistics, Published by CEA, M/o Power

**Table 8A.9: Industry-wise Installed Generating Capacity and Consumption of Electricity (Non-Utilities only) during 2006-07 and 2007-08**

Name of Industry	Installed Generating Capacity (MW)			Energy Consumption (GWh)		
	2006-07	2007-08	% Change	2006-07	2007-08	% Change
Aluminium	2222.89	2226.53	0.16	12820.46	13641.45	6.40
Automobiles	236.72	264.01	11.53	1068.36	1664.96	55.84
Cement	2228.38	2800.94	25.69	12022.11	13237.77	10.11
Chemicals, Mineral oils & Petroleum	5633.35	6196.8	10.00	24685.46	28943.49	17.25
Collieries	196.3	196.3	0.00	669.66	903.36	34.90
Electrical Eng.	383.98	259.82	-32.34	2051.57	1213.84	-40.83
Fertilizers	1010.48	1031.38	2.07	3880.06	3490.83	-10.03
Food Products	146.73	220.23	50.09	446.45	690.78	54.73
Heavy & Light Engg.	1054.73	792.95	-24.82	7213.42	5382.92	-25.38
Iron & Steel	3017.41	3753.61	24.40	19869.52	21050.87	5.95
Jute	161.46	157.88	-2.22	11.31	312.93	2666.84
Mining Quarrying	140.74	379.96	169.97	496.27	2208.76	345.07
Non-Ferrous	171.82	204.07	18.77	571.96	568.28	-0.64
Paper	1145.22	1103.84	-3.61	4078.79	4418.04	8.32
Plastic	39.48	44.91	13.75	258.96	305.52	17.98
Rubber	145.38	180.91	24.44	722.25	999.47	38.38
Sugar	1054.69	1027.17	-2.61	1231.81	1940.21	57.51
Textiles	1923.90	2127.000	10.56	9849.43	9860.80	0.12
Other Industries	1421.38	2018.08	41.98	4603.91	5183.88	12.60
<b>All India (Non-Utilities)</b>	<b>22335.04</b>	<b>24986.39</b>	<b>11.87</b>	<b>106551.76</b>	<b>116018.16</b>	<b>8.88</b>

Source: All India Electricity Statistics, Published by CEA, M/o Power

**Table 8A.10 : Statewise and Sectorwise Sales of Electricity to Ultimate Consumers by Utilities during 2007-08**

States/UTs								(In GWh)	
	Industry	Agriculture	Domestic	Sectors Commercial	Traction & Railways	Public Lighting	Others	Total energy sold	% Share of Region/ State /UT in Total Energy Sold
Haryana	4989.87	7335.37	3476.52	1144.24	442.33	55.96	816.21	18260.5	3.64
Himachal Pradesh	3099.89	26.52	1050.84	246.91	0	12.61	582.68	5019.45	1.00
Jammu & Kashmir	950.06	271.42	1399.08	213.42	0	11.42	1185.45	4030.85	0.80
Punjab	10558.11	10022.2	6348.79	1848.80	109.81	135.55	863.6	29886.86	5.95
Rajasthan	7406.98	8144.56	4463.83	1529.91	296.59	152.55	1663.37	23657.79	4.71
Uttar Pradesh	8591.31	6200.04	13704.2	4089.22	653	438.73	3855.38	37531.88	7.48
Uttarakhand	2269.65	300.20	1162.9	712.43	9.48	45.23	236.22	4736.11	0.94
Chandigarh	279.52	1.31	435.66	351.92	0	14.72	74.05	1157.18	0.23
Delhi	2831.62	37.08	7142.07	5007.72	148.32	253.94	906.76	16327.51	3.25
<b>Sub-Total (NR)</b>	<b>40977.01</b>	<b>32338.7</b>	<b>39183.89</b>	<b>15144.57</b>	<b>1659.53</b>	<b>1120.71</b>	<b>10183.72</b>	<b>140608.13</b>	<b>28.01</b>
Gujarat	20238.47	10946.44	7565.45	3533.86	588.46	228.96	1134.69	44236.33	8.81
Madhya Pradesh	7516.11	7535.59	4943.01	1173.59	1540.8	194.68	687.13	23590.91	4.70
Chhattisgarh	5149.56	1458.8	1883.07	359.25	696.49	62.94	1003.1	10613.21	2.11
Maharashtra	29033.85	12675.64	15389.36	6476.46	2024.02	750.03	1581.6	67930.96	13.53
Goa	1590.12	38.6	602.08	160.29	0	34.87	122.15	2548.11	0.51
Daman & Diu	1194.62	2.41	51.62	25.5	0	3.89	6.78	1284.82	0.26
D & N Haveli	2719.83	8.77	48.27	132.54	0	7.03	9.36	2925.8	0.58
<b>Sub-Total (WR)</b>	<b>67442.56</b>	<b>32666.25</b>	<b>30482.86</b>	<b>11861.49</b>	<b>4849.77</b>	<b>1282.4</b>	<b>4544.81</b>	<b>153130.14</b>	<b>30.51</b>
Andhra Pradesh	15383.47	15241.05	10678.52	2736.85	1208.63	1934.87	1677.71	48861.1	9.73
Karnataka	11104.84	10844.02	6206.88	3613.88	22.46	596.66	1846.64	34235.38	6.82
Kerala	3198.11	240.78	5624.18	1909.74	109.36	248.79	459.57	11790.53	2.35
Tamil Nadu	21113.62	10717.00	13006	6286.00	516	443	871	52952.62	10.55
Puducherry	1422.96	81.63	393.00	132.00	0	16.17	26.21	2071.97	0.41
Lakshadweep	0.32	0	16.44	6.11	0	1.28	0	24.15	0.005
<b>Sub-Total (SR)</b>	<b>52223.32</b>	<b>37124.48</b>	<b>35925.02</b>	<b>14684.58</b>	<b>1856.45</b>	<b>3240.77</b>	<b>4881.13</b>	<b>149935.75</b>	<b>29.87</b>



**Table 8A.10(contd.) : Statewise and Sectorwise Sales of Electricity to Ultimate Consumers by Utilities during 2007-08**

States/UTs	Sectors							(In GWh)	
	Industry	Agriculture	Domestic	Commercial	Traction & Railways	Public Lighting	Others	Total energy sold	% Share of Region/ State /UT in Total Energy Sold
Bihar	1103.16	659.12	1699.98	371.85	384.8	23.9	150.98	4393.79	0.88
Jharkhand	8700.67	66.85	1345.87	225	890.8	89	69.28	11387.47	2.27
Orissa	6019.86	171.99	3312.89	705.42	523.47	67.12	498.38	11299.13	2.25
West Bengal	11335.36	1110.07	7001.24	3159.94	943.52	254.38	2443.46	26247.97	5.23
A & N Island	8.03	0	72.16	37.82	0	7.36	24.48	149.85	0.03
Sikkim	88.63	0	61.62	42.1	0	1.94	65.96	260.25	0.05
<b>Sub-Total (ER)</b>	<b>27255.71</b>	<b>2008.03</b>	<b>13493.76</b>	<b>4542.13</b>	<b>2742.59</b>	<b>443.7</b>	<b>3252.54</b>	<b>53738.46</b>	<b>10.71</b>
Assam	833.65	19.54	991.99	330.8	0	6.05	362.45	2544.48	0.51
Manipur	8.86	0.09	118.25	12.67	0	3.31	54.22	197.4	0.04
Meghalaya	507.66	0.61	211.65	39.15	0	1.5	132.69	893.26	0.18
Nagaland	13.09	0	127.02	9.77	0	4.42	28.43	182.73	0.04
Tripura	65.35	23.99	220.12	40.63	0	12.14	35.58	397.81	0.08
Arunachal Pradesh	77.12	0	47.75	9.54	0	5.57	29.53	169.51	0.03
Mizoram	1.68	0	115.91	9.42	0	10.55	41.88	179.44	0.04
<b>Sub-Total (NER)</b>	<b>1507.41</b>	<b>44.23</b>	<b>1832.69</b>	<b>451.98</b>	<b>0</b>	<b>43.54</b>	<b>684.78</b>	<b>4564.63</b>	<b>0.91</b>
<b>Total All India</b>	<b>189406.01</b>	<b>104181.69</b>	<b>120918.22</b>	<b>46684.75</b>	<b>11108.34</b>	<b>6131.12</b>	<b>23546.98</b>	<b>501977.11</b>	<b>100.00</b>
<b>% Share of Sectorwise Energy sold to Total Energy sold</b>	37.73	20.75	24.09	9.30	2.21	1.22	4.69	100.00	

Source: All India Electricity Statistics, Published by CEA, M/o Power

**Table 8A.10 (contd.) : Statewise and Sectorwise Sales of Electricity to Ultimate Consumers by Utilities during 2006-07**

States/UTs	Sectors							(In GWh)	
	Industry	Agriculture	Domestic	Commercial	Traction & Railways	Public Lighting	Others	Total Energy Sold	% Share of Region/ State /UT in Total Energy Sold
Haryana	4465.79	6871.92	3134.17	990.17	423.86	53.83	703.23	16642.97	3.65
Himachal Pradesh	2553.52	26.40	948.31	289.16	0	11.33	471.74	4300.46	0.94
Jammu & Kashmir	809.04	201.91	1586.43	213.34	7.50	23.77	1188.86	4030.85	0.88
Punjab	9823.12	8229.49	5662.27	1591.28	105.95	127.42	847.38	26386.91	5.79
Rajasthan	6339.41	6658.21	3757.80	1257.40	280.68	131.73	1608.71	20033.94	4.40
Uttar Pradesh	7861.60	6965.33	13565.85	3515.10	635.55	440.80	1559.50	34543.73	7.58
Uttarakhand	1567.92	359.00	1126.95	531.09	6.50	40.53	253.93	3885.92	0.85
Chandigarh	272.72	1.53	390.42	311.79	0	16.05	71.83	1064.34	0.23
Delhi	2461.65	52.36	6371.02	4646.31	330.66	292.62	522.52	14677.14	3.22
<b>Sub-Total (NR)</b>	<b>36154.77</b>	<b>29366.15</b>	<b>36543.22</b>	<b>13345.64</b>	<b>1790.70</b>	<b>1138.08</b>	<b>7227.70</b>	<b>125566.26</b>	<b>27.55</b>
Gujarat	18303.33	11262.02	6602.62	2754.14	520.06	206.83	1123.65	40772.65	8.95
Madhya Pradesh	6120.16	7028.24	3983.53	903.72	1354.45	151.97	557.65	20099.72	4.41
Chhattisgarh	4888.92	1408.11	1624.42	302.47	653.38	58.83	507.77	9443.90	2.07
Maharashtra	27012.60	9748.60	14255.34	6987.06	1986.99	676.60	1600.05	62267.24	13.66
Goa	1515.30	15.55	502.60	156.86	0	29.98	104.08	2324.37	0.51
D & N Haveli	1079.44	3.05	48.56	24.87	0	4.23	6.08	1166.23	0.26
Daman & Diu	2588.93	7.67	46.01	58.78	0	11.50	5.11	2718.00	0.60
<b>Sub-Total (WR)</b>	<b>61508.68</b>	<b>29473.24</b>	<b>27063.08</b>	<b>11187.90</b>	<b>4514.88</b>	<b>1139.94</b>	<b>3904.39</b>	<b>138792.11</b>	<b>30.45</b>
Andhra Pradesh	13946.94	16327.92	9937.05	2391.99	1411.33	1691.07	165.95	45872.25	10.07
Karnataka	8270.78	11208.08	5831.49	2958.82	0.00	731.68	1689.71	30690.56	6.73
Kerala	3964.74	221.24	5234.85	1270.17	72.26	228.96	318.00	11310.22	2.48
Tamil Nadu	19770.00	10358.00	12307.00	4454.00	460.00	410.00	2175.00	49934.00	10.96
Lakshadweep	1395.62	101.05	357.00	129.56	0	15.65	26.11	2024.99	0.44
Puducherry	0.39	0	17.07	5.39	0	1.32	0	24.17	0.01
<b>Sub-Total (SR)</b>	<b>47348.47</b>	<b>38216.29</b>	<b>33684.46</b>	<b>11209.93</b>	<b>1943.59</b>	<b>3078.68</b>	<b>4374.77</b>	<b>139856.19</b>	<b>30.69</b>

**Table 8A.10(contd.) : Statewise and Sectorwise Sales of Electricity to Ultimate Consumers by Utilities during 2006-07**

States/UTs	Sectors							Total Energy Sold	(In GWh) % Share of Region/ State /UT in Total Energy Sold
	Industry	Agriculture	Domestic	Commercial	Traction & Railways	Public Lighting	Others		
Bihar	878.46	787.73	1272.92	325.56	383.90	21.18	156.12	3825.87	0.84
Jharkhand	8513.01	68.41	1166.43	202.80	845.78	84.23	65.02	10945.68	2.40
Orissa	5052.67	144.36	2780.62	592.08	439.37	56.34	418.30	9483.74	2.08
West Bengal	10523.01	940.81	6520.56	2853.62	881.79	241.07	563.26	22524.12	4.94
A & N Island	6.13	0	64.47	33.34	0	7.60	25.09	136.63	0.03
Sikkim	71.97	0	52.18	27.22	0	1.72	58.84	211.93	0.05
<b>Sub-Total (ER)</b>	<b>25045.25</b>	<b>1941.31</b>	<b>11857.18</b>	<b>4034.62</b>	<b>2550.84</b>	<b>412.14</b>	<b>1286.63</b>	<b>47127.97</b>	<b>10.34</b>
Assam	782.60	16.78	1046.49	314.68	0	7.36	407.44	2575.35	0.57
Manipur	8.54	0.09	144.93	12.63	0	4.29	46.90	217.38	0.05
Meghalaya	394.36	0.42	199.57	40.09	0	6.48	137.56	778.48	0.17
Nagaland	13.29	0	97.09	13.60	0	4.57	27.94	156.49	0.03
Tripura	23.01	8.91	222.11	36.40	0	19.49	84.67	394.59	0.09
Arunachal Pradesh	12.00	0	48.00	17.50	0	7.15	53.85	138.50	0.03
Mizoram	2.30	0	95.50	7.10	0	6.50	33.75	145.15	0.03
<b>Sub-Total (NER)</b>	<b>1236.10</b>	<b>26.20</b>	<b>1853.69</b>	<b>442.00</b>	<b>0</b>	<b>55.84</b>	<b>792.11</b>	<b>4405.94</b>	<b>0.97</b>
<b>Total All India</b>	<b>171293.27</b>	<b>99023.19</b>	<b>111001.63</b>	<b>40220.09</b>	<b>10800.01</b>	<b>5824.68</b>	<b>17585.60</b>	<b>455748.47</b>	<b>100.00</b>
<b>% Share of Sectorwise Energy sold to Total Energy sold</b>	37.59	21.73	24.36	8.83	2.37	1.28	3.86	100.00	

Source: All India Electricity Statistics, Published by CEA,M/o Power

**Table 8A.11: Statewise and Sectorwise Sales of Electricity to Ultimate Consumers (from Utilities and Non-Utilities) during 2007-08**

States/UTs	Sectors							Total energy sold	% Share of Region/ State /UT in Total Energy Sold
	Industry	Agriculture	Domestic	Commercial	Traction & Railways	Public Lighting	Others		
Haryana	6130.57	7335.37	3476.52	1144.24	442.33	55.96	816.21	19401.2	3.36
Himachal Pradesh	3165.82	26.52	1050.84	246.91	0	12.61	582.68	5085.38	0.88
Jammu & Kashmir	953.69	271.42	1399.08	213.42	0	11.42	1185.45	4034.48	0.70
Punjab	11354.22	10022.2	6348.79	1848.80	109.81	135.55	863.6	30682.97	5.31
Rajasthan	12135	8144.56	4463.83	1529.91	296.59	152.55	1663.37	28385.81	4.91
Uttar Pradesh	16472.89	6200.04	13704.2	4089.22	653	438.73	3855.38	45413.46	7.86
Uttarakhand	2729.29	300.20	1162.9	712.43	9.48	45.23	218.22	5177.75	0.90
Chandigarh	283.43	1.31	435.66	351.92	0	14.72	74.05	1161.09	0.20
Delhi	2832.17	37.08	7142.07	5007.72	148.32	253.94	906.76	16328.06	2.83
<b>Sub-Total (NR)</b>	<b>56057.08</b>	<b>32338.7</b>	<b>39183.89</b>	<b>15144.57</b>	<b>1659.53</b>	<b>1120.71</b>	<b>10165.72</b>	<b>155670.2</b>	<b>26.93</b>
Gujarat	38765.07	10946.44	7565.45	3533.86	588.46	228.96	1134.69	62762.93	10.86
Madhya Pradesh	10859.96	7535.59	4943.01	1173.59	1540.8	194.68	687.1	26934.73	4.66
Chhattisgarh	8882.65	1458.8	1883.07	359.25	696.49	62.94	1003.1	14346.3	2.48
Maharashtra	33941.03	12675.64	15389.36	6476.46	2024.02	750.03	1581.6	72838.14	12.60
Goa	1630.89	38.6	602.08	160.29	0	34.87	122.15	2588.88	0.45
Daman & Diu	1195.47	2.41	51.62	25.5	0	3.89	6.78	1285.67	0.22
D & N Haveli	2727.33	8.77	48.27	132.54	0	7.03	9.36	2933.3	0.51
<b>Sub-Total (WR)</b>	<b>98002.4</b>	<b>32666.25</b>	<b>30482.86</b>	<b>11861.49</b>	<b>4849.77</b>	<b>1282.4</b>	<b>4544.78</b>	<b>183689.95</b>	<b>31.78</b>
Andhra Pradesh	19839.69	15241.05	10678.52	2736.85	1208.63	1934.87	1038.13	52677.74	9.11
Karnataka	14671.99	10844.02	6206.88	3613.88	22.46	596.66	1846.64	37802.53	6.54
Kerala	3533.66	240.78	5624.18	1909.74	109.36	248.79	459.57	12126.08	2.10
Tamil Nadu	27206.44	10717.00	13006	6286.00	516	443	871	59045.44	10.22
Puducherry	1575.57	81.63	393.00	132.00	0	16.17	26.21	2224.58	0.38
Lakshadweep	0.32	0	16.44	6.11	0	1.28	0	24.15	0.004
<b>Sub-Total (SR)</b>	<b>66827.67</b>	<b>37124.48</b>	<b>35925.02</b>	<b>14684.58</b>	<b>1856.45</b>	<b>3240.77</b>	<b>4881.13</b>	<b>164540.1</b>	<b>28.47</b>

**Table 8A.11(contd.) : Statewise and Sectorwise Sales of Electricity to Ultimate Consumers  
(from Utilities and Non-Utilities) during 2007-08**

States/UTs	Sectors							(In GWh)	
	Industry	Agriculture	Domestic	Commercial	Traction & Railways	Public Lighting	Others	Total energy sold	% Share of Region/ State /UT in Total Energy Sold
Bihar	1271.03	659.12	1699.98	371.85	384.8	23.9	150.98	4561.66	0.79
Jharkhand	12302.84	66.85	1345.87	225	890.8	89	69.28	14989.64	2.59
Orissa	15253.51	171.99	3312.89	705.42	523.47	67.12	498.38	20532.78	3.55
West Bengal	12908.9	1110.07	7001.24	3159.94	943.52	254.38	2443.46	27821.51	4.81
A & N Island	8.03	0	72.16	37.82	0	7.36	24.48	149.85	0.03
Sikkim	88.63	0	61.62	42.1	0	1.94	65.96	260.25	0.05
<b>Sub-Total (ER)</b>	<b>41832.94</b>	<b>2008.03</b>	<b>13493.76</b>	<b>4542.13</b>	<b>2742.59</b>	<b>443.7</b>	<b>3252.54</b>	<b>68315.69</b>	<b>11.82</b>
Assam	1928.3	19.54	991.99	330.8	0	6.05	362.45	3639.13	0.63
Manipur	8.86	0.09	118.25	12.67	0	3.31	54.22	197.4	0.03
Meghalaya	592.39	0.61	211.65	39.15	0	1.5	132.69	977.99	0.17
Nagaland	13.09	0	127.02	9.77	0	4.42	28.43	182.73	0.03
Tripura	65.35	23.99	220.12	40.63	0	12.14	35.58	397.81	0.07
Arunachal Pradesh	77.12	0	47.75	9.54	0	5.57	29.53	169.51	0.03
Mizoram	1.68	0	115.91	9.42	0	10.55	41.88	179.44	0.03
<b>Sub-Total (NER)</b>	<b>2686.79</b>	<b>44.23</b>	<b>1832.69</b>	<b>451.98</b>	<b>0</b>	<b>43.54</b>	<b>684.78</b>	<b>5744.01</b>	<b>0.99</b>
<b>Total All India</b>	<b>265406.88</b>	<b>104181.69</b>	<b>120918.22</b>	<b>46684.75</b>	<b>11108.34</b>	<b>6131.12</b>	<b>23528.95</b>	<b>577959.95</b>	<b>100.00</b>
<b>% Share of Sectorwise Energy sold to Total Energy sold</b>	45.92	18.03	20.92	8.08	1.92	1.06	4.07	100.00	

Source: All India Electricity Statistics, Published by CEA, M/o Power

**Table 8A.11 (Contd.) : Statewise and Sectorwise Sales of Electricity to Ultimate Consumers  
(from Utilities and Non-Utilities) during 2006-07**

States/UTs	Sectors							(In GWh)	
	Industry	Agriculture	Domestic	Commercial	Traction & Railways	Public Lighting	Others	Total energy sold	% Share of Region/ State /UT in Total Energy Sold
Haryana	5549.53	6871.92	3134.17	990.17	423.86	53.83	703.23	17726.71	3.37
Himachal Pradesh	2627.74	26.4	948.31	289.16	0	11.33	471.74	4374.68	0.83
Jammu & Kashmir	811.07	201.91	1586.43	213.34	7.50	23.77	1188.86	4032.88	0.77
Punjab	10618.44	8229.49	5662.27	1591.28	105.95	127.42	847.38	27182.23	5.17
Rajasthan	9507.42	6658.21	3757.8	1257.4	280.68	131.73	1608.71	23201.95	4.41
Uttar Pradesh	14566.42	6965.33	13565.85	3515.1	635.55	440.80	1559.50	41248.55	7.85
Uttarakhand	2002.55	359	1126.95	531.09	6.50	40.53	253.93	4320.55	0.82
Chandigarh	274.06	1.53	390.42	311.79	0	16.05	71.83	1065.68	0.20
Delhi	2462.5	52.36	6371.02	4646.31	330.66	292.62	522.52	14677.99	2.79
<b>Sub-Total (NR)</b>	<b>48419.73</b>	<b>29366.15</b>	<b>36543.22</b>	<b>13345.64</b>	<b>1790.70</b>	<b>1138.08</b>	<b>7227.70</b>	<b>137831.22</b>	<b>26.22</b>
Gujarat	33020.97	11262.02	6602.62	2754.14	520.06	206.83	1123.65	55490.29	10.56
Madhya Pradesh	9611.35	7028.24	3983.53	903.72	1354.45	151.97	557.65	23590.91	4.49
Chhattisgarh	12047.62	1408.11	1624.42	302.47	653.38	58.83	507.77	16602.6	3.16
Maharashtra	31421.49	9748.6	14255.34	6987.06	1986.99	676.60	1600.05	66676.13	12.68
Goa	1636.59	15.55	502.6	156.86	0	29.98	104.08	2445.66	0.47
D & N Haveli	2620.81	7.67	46.01	58.78	0	4.23	-1571.27	1166.23	0.22
Daman & Diu	1079.44	3.05	48.56	24.87	0	11.50	1582.46	2749.88	0.52
<b>Sub-Total (WR)</b>	<b>91438.27</b>	<b>29473.24</b>	<b>27063.08</b>	<b>11187.9</b>	<b>4514.88</b>	<b>1139.94</b>	<b>3904.39</b>	<b>168721.7</b>	<b>32.10</b>
Andhra Pradesh	18011.99	16327.92	9937.05	2391.99	1411.33	1691.07	165.95	49937.3	9.50
Karnataka	11332.4	11208.08	5831.49	2958.82	0	731.68	1689.71	33752.18	6.42
Kerala	4404	221.24	5234.85	1270.17	72.26	228.96	318.00	11749.48	2.24
Tamil Nadu	24428.94	10358	12307	4454	460.00	410.00	2175.00	54592.94	10.39
Lakshadweep	0.39	0	17.07	5.39	0	15.65	2129.87	2168.37	0.41
Puducherry	1539	101.05	357	129.56	0	1.32	-2103.76	24.17	0.005
<b>Sub-Total (SR)</b>	<b>59716.72</b>	<b>38216.29</b>	<b>33684.46</b>	<b>11209.93</b>	<b>1943.59</b>	<b>3078.68</b>	<b>4374.77</b>	<b>152224.44</b>	<b>28.96</b>

**Table 8A.11(Contd.) : Statewise and Sectorwise Sales of Electricity to Ultimate Consumers (from Utilities and Non-Utilities) during 2006-07**

States/UTs	Sectors							(In GWh)	
	Industry	Agriculture	Domestic	Commercial	Traction & Railways	Public Lighting	Others	Total energy sold	% Share of Region/ State /UT in Total Energy Sold
Bihar	879.32	787.73	1272.92	325.56	383.90	21.18	156.12	3826.73	0.73
Jharkhand	12304.01	68.41	116.43	202.8	845.78	84.23	1115.02	14736.68	2.80
Orissa	13758.54	144.36	2780.62	592.08	439.37	56.34	418.30	18189.61	3.46
West Bengal	12388.44	940.81	6520.56	2853.62	881.79	241.07	563.26	24389.55	4.64
A & N Island	6.13	0	64.47	33.34	0	7.60	25.09	136.63	0.03
Sikkim	71.97	0	52.18	27.22	0	1.72	58.84	211.93	0.04
<b>Sub-Total (ER)</b>	<b>39408.41</b>	<b>1941.31</b>	<b>11857.18</b>	<b>4034.62</b>	<b>2550.84</b>	<b>412.14</b>	<b>1286.63</b>	<b>61491.13</b>	<b>11.70</b>
Assam	1695.04	16.78	1046.49	314.68	0	7.36	407.44	3487.79	0.66
Manipur	8.54	0.09	144.93	12.63	0	4.29	46.90	217.38	0.04
Meghalaya	478.92	0.42	199.57	40.09	0	6.48	137.56	863.04	0.16
Nagaland	13.29	0	97.09	13.6	0	4.57	27.94	156.49	0.03
Tripura	23.01	8.91	222.11	36.4	0	19.49	84.67	394.59	0.08
Arunachal Pradesh	12	0	48	17.5	0	7.15	53.85	138.5	0.03
Mizoram	2.3	0	95.5	7.1	0	6.50	33.75	145.15	0.03
<b>Sub-Total (NER)</b>	<b>2233.1</b>	<b>26.2</b>	<b>1853.69</b>	<b>442</b>	<b>0.00</b>	<b>55.84</b>	<b>792.11</b>	<b>5402.94</b>	<b>1.03</b>
<b>Total All India</b>	<b>241216.23</b>	<b>99023.19</b>	<b>111001.63</b>	<b>40220.09</b>	<b>10800.01</b>	<b>5824.68</b>	<b>17585.60</b>	<b>525671.43</b>	<b>100.00</b>
<b>% Share of Sectorwise Energy sold to Total Energy sold</b>	45.89	18.84	21.12	7.65	2.05	1.11	3.35	100.00	

Source: All India Electricity Statistics, Published by CEA, M/o Power

**Table 8A.12 : Statewise Per Capita Consumption of Electricity (from Utilities & Non-Utilities) during 2006-07 and 2007-08**

States/UTs	*Per Capita Energy consumed (kWh)			% Change in Per Capita Energy Consumed (2007-08 over 2002-03)	Energy Consumed per km <sup>2</sup> (kwh)			% Change in Per Capita Energy Consumed (2007-08 over 2002-03)
	2002-03	2006-07	2007-08		2002-03	2006-07	2007-08	
Haryana	537.77	753.4	809.8	50.59	285233	400966	438842	53.85
Himachal Pradesh	408.20	674.0	775.2	89.89	46817	78582	91349	95.12
Jammu & Kashmir	320.32	366.0	360.9	12.68	14964	18147	18154	21.32
Punjab	848.95	1036.5	1155.4	36.10	429664	539758	609273	41.80
Rajasthan	250.14	369.2	443.7	77.39	49666	67794	82941	67.00
Uttar Pradesh	147.07	222.9	240.9	63.81	133787	171206	188492	40.89
Uttarakhand	282.99	465.0	548.6	93.86	50761	80788	96817	90.73
Chandigarh	856.30	941.4	972.4	13.56	7339000	9688000	10555364	43.83
Delhi	739.11	903.1	976.6	32.13	7235189	9917561	11032473	52.48
<b>Sub-Total (NR)</b>	<b>291.66</b>	<b>403.2</b>	<b>447.2</b>	<b>53.34</b>	<b>102542</b>	<b>136369</b>	<b>154019</b>	<b>50.20</b>
Gujarat	662.17	1001.7	1116.4	68.60	222291	283070	320170	44.03
Madhya Pradesh	244.03	352.2	395.2	61.95	56300	76532	87379	55.20
Chhattisgarh	296.33	729.3	621.0	109.57	81687	122809	106120	29.91
Maharashtra	503.28	631.4	679.6	35.03	173605	216678	236703	36.35
Goa	1008.60	1613.2	1651.1	63.70	439135	660989	699697	59.34
Daman & Diu	4652.80	5265.1	5529.8	18.85	7465636	10602091	11687909	56.56
D & N Haveli	3984.48	10054.4	10114.8	153.86	1914490	5612000	5986327	212.69
<b>Sub-Total (WR)</b>	<b>460.68</b>	<b>667.6</b>	<b>715.5</b>	<b>55.31</b>	<b>135345</b>	<b>177324</b>	<b>193055</b>	<b>42.64</b>
Andhra Pradesh	403.86	615.5	650.5	61.07	131273	181551	193839	47.66
Karnataka	402.56	596.5	660.5	64.08	129944	175985	197104	51.68
Kerala	272.12	351.8	360.2	32.35	236936	302354	312045	31.70
Tamil Nadu	584.19	835.0	896.4	53.45	313144	419752	453986	44.98
Puducherry	1575.57	1932.6	1893.3	20.16	3310667	4517438	4634542	39.99
Lakshadweep	278.32	333.4	328.6	18.06	607667	805667	805000	32.47
<b>Sub-Total (SR)</b>	<b>439.94</b>	<b>640.4</b>	<b>685.6</b>	<b>55.85</b>	<b>176923</b>	<b>239241</b>	<b>258597</b>	<b>46.16</b>
Bihar	42.13	41.8	49.1	16.54	40814	40641	48446	18.70
Jharkhand	249.98	499.2	500.3	100.12	107575	184879	188052	74.81
Orissa	181.57	465.4	520.3	186.55	83231	116817	131866	58.43
West Bengal	204.94	284.7	321.4	56.83	207461	274812	313482	51.10
A & N Island	290.97	320.4	339.4	16.65	13120	16561	18164	38.45
Sikkim	132.86	365.7	443.4	233.71	10320	29849	36655	255.19
<b>Sub-Total (ER)</b>	<b>146.73</b>	<b>249.2</b>	<b>273.3</b>	<b>86.29</b>	<b>101391</b>	<b>141789</b>	<b>157526</b>	<b>55.36</b>
Assam	71.89	120.9	124.4	73.09	36824	44464	46394	25.99
Manipur	80.83	93.6	84.0	3.92	7996	9735	8840	10.56
Meghalaya	301.60	347.3	388.9	28.93	31787	38477	43602	37.17
Nagaland	62.36	73.4	84.7	35.79	7631	9438	11021	44.43
Tripura	111.27	115.1	114.6	3.03	34602	37616	37923	9.60
Arunachal Pradesh	70.75	117.7	142.3	101.15	946	1654	2024	113.98
Mizoram	162.97	152.5	186.1	14.22	7004	6886	8512	21.53
<b>Sub-Total (NER)</b>	<b>91.12</b>	<b>130.6</b>	<b>137.1</b>	<b>50.47</b>	<b>17627</b>	<b>21181</b>	<b>22518</b>	<b>27.75</b>
<b>Total All India</b>	<b>322.21</b>	<b>469.2</b>	<b>508.5</b>	<b>57.81</b>	<b>119693</b>	<b>159912</b>	<b>175818</b>	<b>46.89</b>

\* Per capita consumption is computed using Mid Year Population estimates calculated from Census Population Projections as on 1st March.

Source: All India Electricity Statistics, Published by CEA, M/o Power



**Table 8B.1 : Statewise Power Supply Position during 2007-08**

States/UTs	T & D Losses ( GWh)		Peak Demand (MW)	Peak Met (MW)	Peak Deficit/ (Surplus) (MW)
	%	Total			
Haryana	32.8	8924.61	4956	4821	-135
Himachal Pradesh	17.0	1026.62	1061	1010	-51
Jammu & Kashmir	55.7	5070.38	1950	1439	-511
Punjab	22.8	8834.29	8672	7340	-1332
Rajasthan	34.7	12575.6	6374	5564	-810
Uttar Pradesh	28.6	15036.46	11104	8568	-2536
Uttarakhand	35.7	2624.58	1200	1150	-50
Chandigarh	23.8	360.88	275	275	0
Delhi	28.7	6556.38	4075	4030	-45
<b>Sub-Total (NR)</b>	<b>30.3</b>	<b>61009.8</b>	<b>32462</b>	<b>29495</b>	<b>-2967</b>
Gujarat	26.1	15650.87	12119	8885	-3234
Madhya Pradesh	35.6	13066.02	7200	6436	-764
Chhattisgarh	29.8	4503.06	2421	2188	-233
Maharashtra	29.8	28827.76	18441	13575	-4866
Goa	21.2	684.81	457	408	-49
D & N Haveli	-35.0	-1250.99	460	215	-36
Daman & Diu	64.0	2287.51	240	424	-25
<b>Sub-Total (WR)</b>	<b>29.4</b>	<b>63769.04</b>	<b>38277</b>	<b>29385</b>	<b>-8892</b>
Andhra Pradesh	22.4	14110.89	10048	9162	-886
Karnataka	18.9	7960.93	6583	5567	-1016
Kerala	17.8	2554.21	2918	2730	-188
Tamil Nadu	18.7	12187.48	10334	8690	-1644
Lakshadweep	18.1	5.32	6	6	0
Puducherry	5.9	129.74	276	276	0
<b>Sub-Total (SR)</b>	<b>19.8</b>	<b>36948.57</b>	<b>26777</b>	<b>24368</b>	<b>-2409</b>
Bihar	48.8	4186.07	1882	1243	-639
Jharkhand	23.2	3432.48	865	787	-78
Orissa	39.4	7358.95	3142	2905	-237
West Bengal	21.3	7100.75	5283	4987	-296
DVC	-	-	1852	1803	-49
A & N Island	63.6	261.94	40	32	-8
Sikkim	-27.0	-55.36	69	66	-3
<b>Sub-Total (ER)</b>	<b>29.3</b>	<b>22284.83</b>	<b>12031</b>	<b>10699</b>	<b>-1332</b>
Assam	38.6	1599.29	848	766	-82
Manipur	63.6	344.24	119	97	-22
Meghalaya	37.6	538.76	455	279	-176
Nagaland	55.6	228.87	91	88	-3
Tripura	42.8	297.81	171	141	-30
Arunachal Pradesh	67.2	347.3	101	75	-26
Mizoram	44.6	144.66	97	58	-39
<b>Sub-Total (NER)</b>	<b>43.4</b>	<b>3500.93</b>	<b>1742</b>	<b>1347</b>	<b>-395</b>
<b>Total All India</b>	<b>27.2</b>	<b>187513.17</b>	<b>108866</b>	<b>90793</b>	<b>-18073</b>

Source: All India Electricity Statistics, Published by CEA, M/o Power

**Table 8B.2 : Statewise Power Supply Position during 2006-07**

States/UTs	T & D Losses ( GWh)		Peak Demand (MW)	Peak Met (MW)	Peak Deficit/ (Surplus) (MW)
	%	Total			
Delhi	33.0	7229.59	4000	3736	-264
Haryana	33.3	8326.49	4837	4201	-636
Himachal Pradesh	19.8	1059.99	873	873	0
Jammu & Kashmir	52.0	4362.76	1530	1309	-221
Punjab	26.6	9569.31	8971	6558	-2413
Rajasthan	35.6	11075.63	5794	4946	-848
Uttar Pradesh	33.5	17393.4	9184	7531	-1653
Uttarakhand	34.5	2044.67	1108	991	-117
Chandigarh	25.1	357.15	264	247	-17
<b>Sub-Total (NR)</b>	<b>32.8</b>	<b>61418.99</b>	<b>31516</b>	<b>26644</b>	<b>-4872</b>
Gujarat	24.9	13496.97	9783	7610	-2173
Madhya Pradesh	39.2	12978.93	6558	5136	-1422
Chhattisgarh	31.7	4384.72	2631	1907	-724
Maharashtra	31.6	28824.91	17455	12679	-4776
Goa	20.9	614.01	459	419	-40
Daman & Diu	22.1	330.65	210	189	-21
D & N Haveli	11.2	343.47	415	388	-27
<b>Sub-Total (WR)</b>	<b>30.5</b>	<b>60973.66</b>	<b>36453</b>	<b>27463</b>	<b>-8990</b>
Andhra Pradesh	18.7	10517.54	10208	8641	-1567
Karnataka	25.9	10735.37	6253	5811	-442
Kerala	19.1	2672.42	2787	2728	-59
Tamil Nadu	19.5	12130.03	8860	8624	-236
Puducherry	18.8	467.53	265	265	0
Lakshadweep	12.9	3.57	6	6	0
<b>Sub-Total (SR)</b>	<b>20.7</b>	<b>36526.46</b>	<b>26176</b>	<b>24350</b>	<b>-1826</b>
Bihar	50.7	3930.25	1399	1162	-237
Jharkhand	26.2	3853.47	687	671	-16
Orissa	40.9	6552.63	2695	2608	-87
West Bengal	23.6	7002.51	4784	4669	-115
DVC	-	0	1650	1602	-48
A & N Island	23.1	41.05	40	32	-8
Sikkim	-11.8	-34.25	45	45	0
<b>Sub-Total (ER)</b>	<b>31.1</b>	<b>21345.66</b>	<b>10491</b>	<b>10058</b>	<b>-433</b>
Arunachal Pradesh	57.8	189.64	87	76	-11
Assam	33.7	1308.36	771	688	-83
Manipur	53.5	249.85	106	101	-5
Meghalaya	35.3	425.51	402	269	-133
Mizoram	38.2	89.63	83	80	-3
Nagaland	54.8	189.67	79	79	0
Tripura	34.7	210.12	169	142	-27
<b>Sub-Total (NER)</b>	<b>37.7</b>	<b>2662.78</b>	<b>1477</b>	<b>1166</b>	<b>-311</b>
<b>Total All India</b>	<b>28.6</b>	<b>182927.55</b>	<b>100715.00</b>	<b>86818.00</b>	<b>-13897</b>

Source: All India Electricity Statistics, Published by CEA, M/o Power

**Table 8D.1 : Statewise Actual Generation of Electricity (Utilities)**

States/UTs	(In GWh)										
	Hydro		Thermal		Nuclear		New & Renewable		Total		% Change in Total Actual Generation of Electricity(2007- 08 over 2006-07)
	2006-07	2007-08	2006-07	2007-08	2006-07	2007-08	2006-07	2007-08	2006-07	2007-08	
Haryana	3376.49	3367.88	10765.20	10949.69	0	0	0	251.56	14141.69	14569.13	
Himachal Pradesh	3057.11	3188.54	0	0	0	0	0	520.64	3057.11	3709.18	21.33
Jammu & Kashmir	1314.73	1132.38	12.44	13.37	0	0	0	397.11	1327.17	1542.86	16.25
Punjab	8672.79	9252.19	15434.64	16456.69	0	0	0	605.76	24107.43	26314.64	9.16
Rajasthan	3191.77	3670.16	18978.16	21064.71	0	0	552.15	884.57	22722.08	25619.44	12.75
Uttar Pradesh	1483.41	924.42	21485.79	21040.70	0	0	0.00	744.74	22969.20	22709.86	-1.13
Uttarakhand	4293.66	5248.88	0	0	0	0	46.47	293.45	4340.13	5542.33	27.70
Chandigarh	0	0	0	0	0	0	0	0	0	0	-
Delhi	0	0	5013.60	5312.90	0	0	0	0	5013.60	5312.90	5.97
Central Sector NR	19277.18	22892.85	70188.39	72659.31	4692.00	3343.00	0	0	94157.57	98895.16	5.03
<b>Sub-Total (NR)</b>	<b>44667.14</b>	<b>49677.30</b>	<b>141878.22</b>	<b>147497.37</b>	<b>4692.00</b>	<b>3343.00</b>	<b>598.62</b>	<b>3697.83</b>	<b>191835.98</b>	<b>204215.50</b>	<b>6.45</b>
Gujarat	1849.18	1950.56	42048.70	45046.92	0	0	454.91	880.14	44352.79	47877.62	7.95
Madhya Pradesh	5117.69	5364.21	13768.50	13682.08	0	0	70.43	265.49	18956.62	19311.78	1.87
Chhattisgarh	382.22	221.51	9227.49	10620.22	0	0	0.00	805.04	9609.71	11646.77	21.20
Maharashtra	8343.22	6933.53	58928.15	62149.10	0	0	1691.50	3057.50	68962.87	72140.13	4.61
Goa	0	0	354.59	326.83	0	0	0	105.14	354.59	431.97	21.82
D & N Haveli	0	0	0	0	0	0	0	0	0	0	-
Daman & Diu	0	0	0	0	0	0	0	0	0	0	-
Central Sector WR	2605.58	3431.87	46461.34	56140.30	8947.00	9370.00	0	0	58013.92	68942.17	18.84
<b>Sub-Total (WR)</b>	<b>18297.89</b>	<b>17901.68</b>	<b>170788.77</b>	<b>187965.45</b>	<b>8947.00</b>	<b>9370.00</b>	<b>2216.84</b>	<b>5113.31</b>	<b>200250.50</b>	<b>220350.44</b>	<b>10.04</b>
Andhra Pradesh	9524.37	9533.83	28587.58	31287.67	0	0	149.18	2543.88	38261.13	43289.86	13.14
Karnataka	15267.84	14370.53	14457.31	14165.67	0	0	1397.66	4207.28	31122.81	33224.28	6.75
Kerala	7496.61	8107.73	463.83	782.38	0	0	0.00	351.43	7960.44	9238.56	16.06
Tamil Nadu	6320.43	6185.57	28916.07	30125.55	0	0	5497.81	6911.30	40734.31	43959.16	7.92
Lakshadweep	0	0	28.15	28.80	0	0	0	1.08	28.15	29.88	6.15
Puducherry	0	0	270.60	263.62	0	0	0	0.03	270.60	263.65	-2.57
Central Sector SR	0	0	45245.70	47390.01	5163.00	4244.00	0	0.00	50408.70	51634.01	2.43
<b>Sub-Total (SR)</b>	<b>38609.25</b>	<b>38197.66</b>	<b>117969.24</b>	<b>124043.70</b>	<b>5163.00</b>	<b>4244.00</b>	<b>7044.65</b>	<b>14015.00</b>	<b>168786.14</b>	<b>181639.40</b>	<b>7.62</b>

**Table 8D.1(contd.) : Statewise Actual Generation of Electricity (Utilities)**

States/UTs	(In GWh)										% Change in Total Actual Generation of Electricity(2007- 08 over 2006-07)
	Hydro		Thermal		Nuclear		New & Renewable		Total		
	2006-07	2007-08	2006-07	2007-08	2006-07	2007-08	2006-07	2007-08	2006-07	2007-08	
Bihar	67.21	0.00	37.25	143.96	0	0	0	178.97	104.46	322.93	209.14
Jharkhand	208.47	210.83	6060.00	4903.80	0	0	0	14.38	6268.47	5129.01	-18.18
Orissa	7468.18	8013.72	3317.81	3047.19	0	0	0	25.92	10785.99	11086.83	2.79
West Bengal	433.39	755.96	25350.00	26508.68	0	0	0	349.48	25783.39	27614.12	7.10
DVC	357.31	448.33	13779.10	14802.73	0	0	0	0.00	14136.41	15251.06	7.88
A & N Island	9.34	0.00	173.88	192.21	0	0	0	18.78	183.22	210.99	15.16
Sikkim	35.00	0.00	0.15	0.18	0	0	0	138.88	35.15	139.06	295.62
Central Sector ER	201.10	428.35	45184.77	46822.82	0	0	0	0.00	45385.87	47251.17	4.11
<b>Sub-Total (ER)</b>	<b>8780.00</b>	<b>9857.19</b>	<b>93902.96</b>	<b>96421.57</b>	<b>0.00</b>	<b>0.00</b>	<b>0.00</b>	<b>726.41</b>	<b>102682.96</b>	<b>107005.17</b>	<b>4.21</b>
Assam	15.44	510.18	966.63	1125.46	0	0	0	7.49	982.07	1643.13	67.31
Manipur	2.82	0.00	3.16	1.73	0	0	0	19.35	5.98	21.08	252.51
Meghalaya	394.51	547.52	0.00	0.00	0	0	0	110.19	394.51	657.71	66.72
Nagaland	33.48	0.00	0.10	0.00	0	0	0	101.81	33.58	101.81	203.19
Tripura	46.32	0.00	511.35	620.23	0	0	0	56.85	557.67	677.08	21.41
Arunachal Pradesh	65.00	0.00	7.00	4.89	0	0	0	160.68	72.00	165.57	129.96
Mizoram	8.60	0.00	3.51	2.65	0	0	0	62.04	12.11	64.69	434.19
Central Sector NER	2581.19	3695.19	2459.47	2388.73	0	0	0	0.00	5040.66	6083.92	20.70
<b>Sub-Total (NER)</b>	<b>3147.36</b>	<b>4752.89</b>	<b>3951.22</b>	<b>4143.69</b>	<b>0.00</b>	<b>0.00</b>	<b>0.00</b>	<b>518.41</b>	<b>7098.58</b>	<b>9414.99</b>	<b>32.63</b>
<b>Central Sector All India</b>	<b>24665.05</b>	<b>30448.26</b>	<b>209539.67</b>	<b>225401.17</b>	<b>18802.00</b>	<b>16957.00</b>	<b>0</b>	<b>0</b>	<b>253006.72</b>	<b>272806.43</b>	<b>7.83</b>
<b>Total All India</b>	<b>113501.64</b>	<b>120386.72</b>	<b>528490.41</b>	<b>560071.78</b>	<b>18802.00</b>	<b>16957.00</b>	<b>9860.11</b>	<b>25210.00</b>	<b>670654.16</b>	<b>722625.50</b>	<b>7.75</b>
<b>% Share of Sourcewise Generation of Electricity to Total Generation of Electricity</b>	<b>16.92</b>	<b>16.66</b>	<b>78.80</b>	<b>77.51</b>	<b>2.80</b>	<b>2.35</b>	<b>1.47</b>	<b>3.49</b>	<b>100.00</b>	<b>100.00</b>	

Source: All India Electricity Statistics, Published by CEA, M/o Power

**Table 8D.2 : Sector-wise and Organisation-wise Plant Load Factor, Generation Target / Actual Generation**

Sector / Organisation	2006-07			2007-08		
	PLF%	Target (MU)	Actual (MU)	PLF%	Target (MU)	Actual (MU)
<b>Thermal</b>						
<b>A. Central Sector</b>						
N.T.P.C	89.3	183250	189662.8	90.43	200121	200898.32
NEYVELI CORP.	72.4	16460	15795.2	79.79	15816	17450.73
D.V.C	60.4	14073	13764.9	62.73	16290	14795.91
N.E.E.P.C.O	-	2266	2456.5	-	2310	2388.93
RGPPPL	-	0	0	-	2912	4829.53
<b>Total Central Sector</b>	<b>84.8</b>	<b>216049</b>	<b>221679.4</b>	<b>86.74</b>	<b>237449</b>	<b>240363.42</b>
<b>B. State Sector</b>						
HPGC	78	10160	10516.5	78.22	10617	10704.48
IPGPCL	47.4	5700	5255.8	57.23	5750	5581.83
PSEB	83.1	15125	15435.7	87.63	15641	16451.5
RRVUNL	91.3	19385	18758.9	90.45	20364	20262.47
UPRVUNL	59.6	21770	21440.5	56.28	22887	21195.93
CSEB	82.3	9435	9224.5	80.74	10810	10053.53
GEB	66.5	23574	21881.2	-	0	0
GMDCL	13.2	1665	377	45.96	700	1009.25
GSECL	80.3	5525	4378.9	76.32	29327	28028.56
GSEGL	-	1107	1064.9	-	1148	1114.14
MSEB	73.3	48497	45275.2	-	0	0
MAHAGENCO	-	-	-	76.1	51662	47683.65
MPGPCL	70.1	15075	14014.9	-	-	-
MPPGCL	-	-	-	67.38	16786	14534.47
APGPC	-	1900	1522.4	-	-	-
APGENCO	86.1	24453	22048.1	86.65	25256	23631.21
APGPCL	-	-	-	-	1562	1141.75
KPCL	89.2	10610	11483.3	84.18	11755	11083.7
KSEB	-	225	246.2	-	103	375.97
VVNL	-	240	139.5	-	-	-
LAKSH	-	25	28.2	-	25	28.7
PPCL	-	260	277.2	-	260	276.03
TNEB	81.5	23466	23133.1	81.9	23881	22786.09
A&N ADM	-	40	73.9	-	60	80.75
BSEB	0.8	600	37.3	4.58	315	128.74
DPL	51.5	2400	1781.8	42.39	2740	1536.04
JSEB	8.3	2000	613	9.43	1360	695.72
OPGC	90.1	3311	3316.8	82.22	3320	3033.31
SIKKIM	0	0	0.1	-	0	0.15
TVNL	73.9	1664	2719.5	48.75	2310	1798.45
VPGCL	-	-	-	0.56	477	10.82
WBPDC	61.7	14955	15615.9	67.93	16625	16935.64
ASEB	16.8	1010	847	20.37	1366	1028.2
MIZORAM	-	5	3.4	-	0	2.65
MPDC	-	6	1.6	-	7	-
NAGALAND	-	156	0	-	-	-
TRIPURA	-	584	519.4	-	490	587.36
<b>Total State Sector</b>	<b>70.6</b>	<b>264928</b>	<b>252031.7</b>	<b>71.89</b>	<b>277604</b>	<b>261781.09</b>

**Table 8D.2 (contd.) : Sector-wise and Organisation-wise Plant Load Factor, Generation Target / Actual Generation**

Sector / Organisation	2006-07			2007-08		
	PLF%	Target (MU)	Actual (MU)	PLF%	Target (MU)	Actual (MU)
<b>Thermal</b>						
<b>C. Private Sector</b>						
<b>Pvt. Utility</b>						
AECO	95.4	3680	3857.1	-		
BSES	101.8	4128	4458.5	101.21	4146	4445.23
CESC	85	7460	7708.6	87.78	7560	7980.22
TATA PCL	77.8	10240	9181.8	85.85	10170	10009.08
TORRENT POWER (AECO)	-			99.97	3560	3980.04
<b>Total Pvt. Sector Utility</b>	<b>86.4</b>	<b>25508</b>	<b>25206</b>	<b>90.79</b>	<b>25436</b>	<b>26414.57</b>
<b>Private IPPs Import</b>						
GVK IND.	-	1759	1154.7	-		
ABAN POWER	-			-	834	857.27
BELLARY	-	120	60.3	-	20	70.94
BSES©	-	100	180.7	-	115	347.42
BSES(P)	-	938	945.1	-	900	1136.48
DLF ASSAM	-	175	105.2	-	175	94.46
DPSCLTD	-			-	0	166.17
ESSAR	-			-	1900	1900.09
GAUTAMI	-	421	0	-	1811	0
GIPCL	-	3994	3911.3	-	2953	3020.88
GTE CORP	-	4680	4390.8	-	4586	4061.64
GVKP&IL	-			-	1000	1310.46
JINDAL	-			-	1000	1419.98
JPL	-			-	554	552.86
KONA	-	343	0	-	762	0
KONDAPALI	-	2303	1691.6	-	1400	2213.43
MADURAI P	-	395	360.3	-	565	491.28
PENNA	-			-	377	355.4
PPNPGCL	-	1100	1090.9	-	1100	2128.08
REL	-	300	355.2	-	341	327.84
RPG	-	50	24.3	-	59	35.48
SAMALPATI	-	395	379	-	574	518.94
SPGL	-			-	1000	1481.23
ST-CMSECP	-			-	1774	1806.42
SUR.CH.PL	-	100	108.9	-	100	112.48
TANIR BAV	-			-	200	521.03
TATA PCL (B)	-	346	180.6	-	100	235.9
TATA PCL(J)	-			-	2375	2136.21
TOR. POW.(SUGEN)	-			-	2535	0
KEPS	-	854	821	-		
VASAVI	-	1007	886	-	1101	1136.53
GMR ENERGY	-	1091	499.8	-		
SPECTRUM IND.	-	1346	1067.8	-		
RGPPL	-	3050	1626.4	-		
NEYVELI	-	1760	1825	-		
WBSEB	-	250	180.5	-		
VALANTH	-	432	349.2	-		
VEMAGIRI	-	589	117.8	-	480	66.44
<b>Total Pvt. Sector IPP</b>	<b>-</b>	<b>27898</b>	<b>22312.4</b>	<b>-</b>	<b>30691</b>	<b>28505.34</b>

**Table 8D.2 (contd.) : Sector-wise and Organisation-wise Plant Load Factor, Generation Target / Actual Generation**

Sector / Organisation	2006-07			2007-08		
	PLF%	Target (MU)	Actual (MU)	PLF%	Target (MU)	Actual (MU)
<b>Thermal</b>						
<b>Pvt. IPPs Import</b>						
ESSAR	-	1350	1788.7	-		
GIPCL	-			-	314	1138.13
ICCL	-	450	373	-	300	319.22
JINDAL	-	811	1528.9	-		
TATA PCL	-	2300	1981.4	-		
NALCO	-	250	598	-	400	293.44
<b>Total Pvt.Sector Import</b>	<b>-</b>	<b>5161</b>	<b>6270</b>	<b>-</b>	<b>1014</b>	<b>1750.79</b>
<b>Total Pvt. Sector</b>	<b>86.4</b>	<b>58567</b>	<b>53788.4</b>	<b>90.79</b>	<b>57141</b>	<b>56670.7</b>
<b>Nuclear</b>						
KAIGA	65.5	2485	2524.9	42.89	3423	2495.22
KAKRAPARA	63.5	2325	2447.6	52.78	2198	2039.75
M.A.P.P.	70.6	2603	2618.6	45.24	2292	1748.58
N.A.P.S.	26.6	324	1023.7	17.34	1173	670.01
R.A.P.S.	53.9	3677	3496.4	38.16	4384	2480.34
TARAPUR	61.8	6992	6494.2	59.7	9243	7341.81
<b>Total Nuclear</b>	<b>57.5</b>	<b>18406</b>	<b>18605.4</b>	<b>46.39</b>	<b>22713</b>	<b>16775.71</b>
<b>Hydro</b>						
<b>A. Central Sector</b>						
<b>CENTRAL SECTOR</b>						
BBMB	-	10800	10057.8	-	10150	10955.1
DVC	-	300	357.6	-	320	450.1
NEEPCO.	-	3287	2097	-	3000	3092.29
NHDC	-			-	3058	3424.78
NHPC	-	13679	13054.6	-	14089	14812.7
SJVNL	-			-	6400	6406.72
NATHPA JHAKRI	-	6400	5998.1	-		
INDIRA SAGAR	-	2698	2604.7	-		
TEHRI ST-1	-	1384	884.1	-		
THDC	-	0	0	-	2773	2667.98
<b>Total Central Sector</b>	<b>-</b>	<b>38548</b>	<b>35053.9</b>	<b>-</b>	<b>39790</b>	<b>41809.67</b>
<b>B. State Sector</b>						
HPGC	-	310	255.1	-	275	269.22
HPSEB	-	1810	1379	-	1887	1806.88
JKEB	-	930	987.1	-	1066	878.38
RRVUNL	-	658	1115.4	-		
UPHPC	-	1567	1415.6	-		
USEB	-	3492	3278.7	-		
J&KPDC	-	0	0	-		
PSEB	-	3658	4391.9	-	3840	4606.17
GEB	-	966	1271.5	-		
RRVUNL	-			-	1190	1399.94
UJVNL	-			-	3403	3478.94
UPJVNL	-			-	1470	927.35
CSEB	-	320	388.1	-	353	262.06
SSVNL	-	2789	3600.8	-		
GSECL	-			-	966	1240.09
MAHAGENCO	-			-	3861	4641.07
MPPGCL	-			-	2788	2747.66
NVDA	-			-	14	0

**Table 8D.2 (contd.) : Sector-wise and Organisation-wise Plant Load Factor, Generation Target / Actual Generation**

Sector / Organisation	2006-07			2007-08		
	PLF%	Target (MU)	Actual (MU)	PLF%	Target (MU)	Actual (MU)
<b>Hydro</b>						
SSNNL	-			-	4390	4436.43
MPGPCL	-	2481	3050.9	-		
APGEN Co	-	7702	9823.6	-	8163	9921.59
KPCL	-	10301	14230.6	-	11327	13797.77
KSEB	-	6292	7481	-	6749	8341.84
TNEB	-	4250	6285.4	-	4491	6463.71
VVNL	-			-	625	767.81
A&N ADM	-	0	10.2	-	8	7.8
BSHPC	-			-	71	53.45
JSEB	-	105	208.5	-	150	208.65
OHPC	-	5495	7219.6	-	5664	7894.79
SIKKIM	-	57	35.1	-	46	49.77
WBSEB	-	390	412.6	-	344	756.32
APGPCL	-			-	396	496.4
ARUNACHAL	-	20	7.3	-	21	12.22
MEGEB	-			-	571	665.81
NAGALAND	-	60	0	-	120	102.86
MSEB	-	3844	5094.6	-		
KEB	-	470	746.1	-		
BSEB	-	62	63.5	-		
MESEB	-	569	392	-		
TRIPURA	-	60	45.9	-	50	36.06
<b>Total State Sector</b>	-	<b>31975</b>	<b>42232.4</b>	-	<b>30633</b>	<b>39655.26</b>
<b>Private Sector</b>						
<b>Private Utility</b>						
Tata Mah.	-	1400	2132.7	-		
BHANDARDHARA	-			-	96	129.51
BIHAR	-			-	923	356.92
BIHRA PSS	-			-	0	587.63
BHIVPURI	-			-	290	290.03
GUNTUR	-			-	0	0
KHOPOLI	-			-	297	258.17
TAWA	-			-	40	0
HEGL	-	30	40.2	-		
<b>Total Private Utility</b>	-	<b>1430</b>	<b>2172.9</b>	-	<b>1646</b>	<b>1622.26</b>
<b>Pvt. IPPs</b>						
BASPA	-	1213	1314.4	-	1213	1280.68
CHAYADEVI	-			-	54	52.2
HARANGI	-	24	7.3	-	24	33.88
KUTHUNGAL	-	0	47.5	-	60	62.58
MADHAVAMANTRI	-	23	24.7	-	23	16.86
MALANA	-	352	323.6	-	350	335.85
MANDAGERE	-	6	5.7	-	5	8.49
MANIYAR	-	0	43.1	-	35	38.74
NARAYANPUR	-	34	51.8	-	40	51.21
NERIA	-			-	24	19.71
SHAHPUR	-	22	22.4	-	22	19.31
SHIVPURA	-	90	78	-	90	76.64
VISHNU PRAYAG	-	600	979.7	-	1775	1870.66
<b>Total Pvt.IPPs</b>	-	<b>2364</b>	<b>2898.2</b>	-	<b>3715</b>	<b>3866.81</b>
<b>Total Private Sector</b>	-	<b>3794</b>	<b>5071.1</b>	-	<b>5361</b>	<b>5489.07</b>

Source: Annual Report published by CEA, M/o Power



**Table 8D.3 : Industry-wise Actual Generation of Electricity (Non-Utilities only) during 2006-07 and 2007-08**

Name of Industry	(in GWh)		
	2006-07	2007-08	% Change
Aluminium	14827.95	15817.08	6.67
Automobiles	316.61	359.85	13.66
Cement	7342.88	8290.39	12.90
Chemicals, Mineral oils & Petroleum	22905.16	27236.01	18.91
Collieries	152.72	451.32	195.52
Electrical Eng.	1815.38	718.32	-60.43
Fertilizers	2898.68	2664.76	-8.07
Food Products	99.47	347.15	249.00
Heavy & Light Engg.	3036.57	973.73	-67.93
Iron & Steel	15268.15	17133.33	12.22
Jute	12.78	9.6	-24.88
Mining Quarrying	113.99	1712.69	1402.49
Non-Ferrous	862.79	955.12	10.70
Paper	3815.23	4125.95	8.14
Plastic	130.09	157.81	21.31
Rubber	103.25	222.22	115.23
Sugar	3102.95	3317.4	6.91
Textiles	3512.81	3333.29	-5.11
Other Industries	1482.29	2650.67	78.82
<b>All India (Non-Utilities)</b>	<b>81799.75</b>	<b>90476.69</b>	<b>10.61</b>

Source: All India Electricity Statistics, Published by CEA, M/o Power

**Table 8E.1 : Statewise Estimated Average Rates of Electricity as on 31.03.09**

Sl. No.	State / SEB / Utility	Tariff effective from	Rates in Paise/KWh						
			Domestic			Commercial			
			1 KW (100 KWh/Month)	4 KW (400 KWh/Month)	10 KW (1500 KWh/Month)	2 KW (300 KWh/Month)	10 KW (1500 KWh/Month)	30 KW (4500 KWh/Month)	50 KW (7500 KWh/Month)
1	Andhra Pradesh	<b>01-04-2007</b>	238.5	396.63	492.25	599.33	624.67	628.89	629.73
2	Assam	<b>04-08-2006</b>	310	411.5	445	528.33	528.33	536.31	536.31
3	Bihar	<b>01-11-2006</b>	233.2 U 76.32 R	294.05	362.52	515.87 U 51.94 R	503.85	500.09	499.33
4	Chhattisgarh	<b>01-10-2006</b>	189.1	238.5	334.58	436.41	519.17	519.37	519.41
5	Gujarat	<b>01-04-2007</b>	348 U 264 R	462 U 368.5 R	526.8 U 427.9 R	564.58	595.42	590.14	589.08
6	Haryana	<b>01-11-2006</b>	356.2	410.05	450.82	468	468	468	468
7	Himachal Pradesh	<b>01-04-2007</b>	216	263.5	283	450.67	437.33	448.44	447.56
8	Jammu & Kashmir	<b>01-04-2007</b>	129.5	188.88	214.75	222	262	268.67	270
9	Jharkhand	<b>01-01-2004</b>	163 U 74 R	183	182	438.67	438.67	438.67	438.67
10	Karnataka	<b>01-11-2006</b>	292.43 D 292.43 E 260.93 F	418.3 D 413.05 E 381.55 F	482.32 D 473.92 E 442.42 F	637.88 D 618.63 E 609.87 F	651.18 D 630.53 E 623.18 F	653.39 D 632.51 E 625.39 F	653.84 D 632.91 E 625.83 F
11	Kerala*	<b>01-04-2006</b>	187	398.89	517.61	727.84	889.9	962.74	969.98
12	Madhya Pradesh	<b>16-04-2008</b>	347.44 U 341.74 R	454.13 U 430.38 R	475.31 U 451.05 R	565.83	567.17	567.39	567.43
13	Maharashtra	<b>01-06-2008</b>	275.9	443.36	596.68	528.84	594.02	779.54	779.54
14	Meghalaya	<b>01-10-2004</b>	180	246.25	275.5	409.33	446.67	452.89	454.13
15	Orissa	<b>01-04-2007</b>	135.2	247	286	384.8	443.04	452.75	454.69
16	Punjab	<b>01-04-2006</b>	247.1	374.15	408.8	469.3	469.3	469.3	469.3
17	Rajasthan	<b>01-01-2005</b>	417.5 U 390.25 R	396.88 U 363.81 R	392.75 U 358.53 R	556.67	554	555.78	556.13
18	Tamil Nadu	<b>01-04-2007</b>	120	216.25	269.5	602	607.6	608.53	608.72

U - Urban, R - Rural, D - Bangalore Metro Area, E - Areas under other local bodies, F - Areas under Village Panchayats

\* In Kerala, Kerala State Electricity Regulatory Commission has approved continuation of the existing tariffs (effective from 01.10.2002) and other charges by the Kerala State Electricity Board.

**Table 8E.1(contd.) : Statewise Estimated Average Rates of Electricity as on 31.03.09**

Sl. No.	State / SEB / Utility	Tariff effective from	Domestic			Commercial			
			1 KW (100 KWh/Month)	4 KW (400 KWh/ Month)	10 KW (1500 KWh/ Month)	2 KW (300 KWh/Month)	10 KW (1500 KWh/Month)	30 KW (4500 KWh/Month)	50 KW (7500 KWh/Month)
19	Uttar Pradesh	10-05-2007	249 U 59 R	359 U 209 R	359 U 239 R	452.33 U 209 R	452.33 U 269 R	452.33 U 279 R	452.33 U 281 R
20	Uttarakhand	01-04-2006	215	215	215	315 W 365 M	315 W 365 M	315 W 365 M	315 W 365 M
21	West Bengal	01-04-2007	248.33 U 237.11 R	406.43 U 391.49 R	529.24 U 523.26 R	443.27 U 441.48 R	583.96 U 583.59 R	604.05 U 603.93 R	608.07 U 608 R
22	Arunachal Pradesh	01-02-2000	162.5	211.88	231.75	370	390	393.33	394
23	Goa	01-04-2002	143	188	233	386.33	413.67	429.89	433.13
24	Manipur	03-09-2002	262.2	299.7	302.2	302.2	302.2	381.8	381.8
25	Mizoram (Distt.HQ& sub.Divn. Area)	25-07-2005	170	247.5	249	266.67	266.67	266.67	266.67
	Other Areas		180	195	198				
26	Nagaland	01-04-2006	272	310.25	337.7	398	431.6	437.2	438.32
27	Sikkim	01-04-2006	105.75	266.06	322.43	335.25	396.45	408.15	410.49
28	Tripura	01-07-2006	215	365	365	353.33	456.67	456.67	456.67
29	A & N Islands	01-07-2003	130	275	326	406.67	465.33	475.11	477.07
30	Chandigarh	01-08-2005	179	304	304	347	347	347	347
31	Dadra & Nagar Haveli	01-10-2006	130	172.5	204	248.33	265.67	268.56	269.13
32	Daman & Diu	01-10-2006	130	172.5	204	248.33	265.67	268.56	269.13
33	Delhi BYPL/BRPL/NDPL	01-10-2006	277.2	346.5	434.7	596.75	596.75	622.76	622.76
34	Delhi NDMC	01-04-2006	158	252.25	327.7	462	525	525	525
35	Lakshadweep	01-09-2004	100	300	300	480	480	480	480
36	Puducherry	16-04-2002	55	113.75	150.5	274.74	325.34	333.78	335.47
37	Torrent Power Ltd.(Ahmedabad)	01-04-2007	345.15	399.26	427.64	527.88	586.51	592.79	594.54
38	Kolkata (CESC)	01-04-2007	279.84	462.48	533.62	450.53	579.26	597.3	600.91
39	D.V.C. (A) Bihar Area	01-09-2000	-	-	-	-	-	-	-
	(B)West Bengal Area		-	-	-	-	-	-	-
40	Durgapur Projects Ltd.	01-04-2007	189	254.93	264.33	272.43	293.4	294.83	295.12
41	Mumbai (B.E.S.T)	01-06-2008	127.1	327.85	605.88	563.71	924.82	1301.97	1301.97
	Mumbai (Reliance Energy)	01-06-2008	239.31	494.14	748.58	827.73	767.46	1173.32	1173.32
	Mumbai (TATA'S)	01-06-2008	240.12	444.52	660.12	634.38	589.18	825.4	825.4

U - Urban, R - Rural, M - Without TOD Meter, W - Without TOD Meter

Table 8E.1 (contd.) : Statewise Estimated Average Rates of Electricity as on 31.03.09

Sl. No.	State / SEB / Utility	Tariff effective from	Agriculture			Industry			Railway Traction 12500 KW (25000000KWh/Month)		
			2 HP (400 KWh/Month)	5 HP (1000 KWh/Month)	10 HP (2000 KWh/Month)	Small Industry 10 KW (1500 KWh/Month)	Medium Industry 50 KW (7500 KWh/Month)	Large Industry 1000 KW (438000 KWh/Month)	Heavy Industry 100000 KW (4380000 KWh/Month)	Heavy Industry (33 KV) 20000 KW (8760000 KWh/Month)	
1	Andhra Pradesh	01-04-2007	29.38	23.75	21.88	415.4	414.33	380.3	418.6	407.68	410.03
2	Assam	04-08-2006	240	240	240	285.67 U	450.33	370.2	369.07	358.05	
3	Bihar	01-11-2006	51.5 RS 61.5 US	51.5 RS 61.5 US	51.5 RS 61.5 US	490.38	525.72	497.84	-	484.56	531.89 at 25KV 525.89 at 132KV
4	Chhattisgarh	01-10-2006	32.5	32.5	42.5	304.52	413.35	423.47	423.47	452.4	477.22 at 132KV
5	Gujarat	01-04-2007	55	55	55	438.62	468.36	495	534.7	534.5	549.12 at 132KV
6	Haryana	01-11-2006	17.5	17.5	17.5	478	499.9	457	457	445	481.29 at 11KV
7	Himachal Pradesh	01-04-2007	208	205	204	386.33	406.56	340.12	325.99	323.6	
8	Jammu & Kashmir	01-04-2007	49.5	40.33	27.5	222	222	256.09	256.09	250.2	
9	Jharkhand	01-01-2004	28.75	28.75	28.75	405.62	405.62	412.95	412.95	392.95	516.5 at 25KV 477.69 at 132KV
10	Karnataka	01-11-2006	45 G 110 H	45 G 110 H	55 G 115 H	418.4 D 397.96 O	521.47 D 477.57 O	490.28 D 471.71 O	501.07 D 482.5 O	499.57 D 480.99 O	485.88
11	Kerala*	01-04-2006	74.8	74.8	74.8	390.5	390.5	385.02	385.02		360.29 at 110KV
12	Madhya Pradesh	16-04-2008	188.75	213.5	221.75	381.02 U 348.8 R	550.8 U 478 R	483.7	483.7	480	465 at 132/220KV
13	Maharashtra	01-06-2008	90 I 75 J	90 I 75 J	90 I 75 J	348.42	583.56	519.62 B 482.89 C	519.62 B 482.89 C	-	465.3
14	Meghalaya	01-10-2004	116	116	116	383.33	408.67	253.92	253.53	-	-
15	Orissa	01-04-2007	102	102	102	322.4	335.81	361.51	361.46	361.46	413.48 at 25/33KV
16	Punjab	01-04-2006	0	0	0	374.7	413.2	413.2	413.2	400.92	447 at 132KV
17	Rajasthan	01-01-2005	78.75	75.6	74.55	421.28	459.68	463.83	463.83	460.65	451
18	Tamil Nadu	01-04-2007	0	0	0	458.85	486.57	452.11	462.61	452.11	526.47
19	Uttar Pradesh	10-05-2007	224 U 45 R	224 U 45 R	224 U 45 R	452.33 U 385.83 R	452.33 U 385.83 R	404.18 U 344.91 R	404.18 U 344.91 R	418.29 U 356.9 R	461.11 Below 132KV 444.44 132KV and above

U - Urban, R - Rural, B : Continuous Supply Areas, C : Non-Continuous Supply Areas, D - Bangalore Metro Area, G - General, H - Urban feeders,

I : Category 1 Zone Areas (Bhandup urban, Pune, Nasik), J : Category 2 Zone Areas (Amravati, Aurangabad, Kalyan, Konkan, Kolhapur, Latur, Nagpur urban, Nagpur), O : Other Areas

\* In Kerala, Kerala State Electricity Regulatory Commission has approved continuation of the existing tariffs (effective from 01.10.2002) and other charges by the Kerala State Electricity Board.

Table 8E.1 (contd.) : Statewise Estimated Average Rates of Electricity as on 31.03.09

Sl. No.	State / SEB / Utility	Tariff effective from	Agriculture			Industry					Rates in Paise/KWh
			2 HP (400 KWh/M onth)	5 HP (1000 KWh/M onth)	10 HP (2000 KWh/M onth)	Small Industry (1500 KWh/Month)	Medium Industry (7500 KWh/Month)	Large Industry (1000 KW 60%L.F. (438000 KWh/Month))	Heavy Industry (100000 KW 60 %L.F. (4380000 KWh/Month))	Heavy Industry (33 KV) 20000 KW 60 %L.F. (8760000 KWh/Month)	Railway Traction (2500000KWh/Month)
20	Uttarakhand	01-04-2006	81.6 U 69 R	78 U 65.4 R	76.8 U 64.2 R	305.09	305.09	282.1	282.1	275.68	
21	West Bengal	01-04-2007	147	147	147	379.78 U 364.71 R	470.78 U 450.2 R	470.81	470.81	447.14	453.79 at 25KV 424.39 at 132KV
22	Arunachal Pradesh	01-02-2000	-	-	-	345	353.33	393.86	394.89	-	-
23	Goa	01-04-2002	120.5	119	118.5	313.67	353.13	398.4	398.3	398.3	-
24	Manipur	03-09-2002	272.2	272.2	272.2	287.2	381.8	336.09	336.09	336.09	-
25	Mizoram (Distt.HQ& sub.Divn. Area)	25-07-2005	69.94	69.94	69.94	208.33	208.33	71.35	71.35	71.35	-
26	Nagaland	01-04-2006	150	150	150	280	296.33	314.68	314.97	-	-
27	Sikkim	01-04-2006	180	247.5	326.25	414 U 300 R	288.18	312.3	312.3	-	-
28	Tripura	01-07-2006	87.46	87.46	134.92	300	336.67	-	-	-	-
29	A & N Islands	01-07-2003	90	90	90	316.67	327.33	-	-	-	-
30	Chandigarh	01-08-2005	165	165	165	350.33	387	360.7	360.7	350.21	-
31	Dadra & Nagar Haveli	01-10-2006	55	55	55	230	253.4	299.97	301	-	-
32	Daman & Diu	01-10-2006	55	55	55	250	282.34	279.97	281	-	-
33	Delhi BYPL/BRPL/NDPL	01-10-2006	162.2	162.2	162.2	560	560	560.3	560.3	547.32	517.26 at 11KV
34	Delhi NDMC	01-04-2006	-	-	-	431	431	-	-	-	576
35	Lakshadweep	01-09-2004	-	-	-	330	330	-	-	-	-
36	Puducherry	16-04-2002	0	20.67	19.83	247.52	257.5	320.15	332.72	-	-

U - Urban, R - Rural

Tariffs notified have varying parameters for tariff in respect of Category various categories of consumers. The above comparison is for certain assumed loads and electricity consumption levels in a month

Source : www.cea.nic.in

**Table 8E.1 (contd.) : Statewise Estimated Average Rates of Electricity as on 31.03.09**

Sl. No.	State / SEB / Utility	Tariff effective from	Agriculture			Industry					Rates in Paise/KWh	
			2 HP (400 KWh/Month)	5 HP (1000 KWh/Month)	10 HP (2000 KWh/Month)	Small Industry 10 KW (1500 KWh/Month)	Medium Industry 50 KW (7500 KWh/Month)	Large Industry 1000 KW 60%L.F. (438000 KWh/Month)	Heavy Industry 100000 KW 60 %L.F. (4380000 KWh/Month)	Heavy Industry (33 KV) 20000 KW 60 %L.F. (8760000 KWh/Month)	Railway Traction 12500 KW (25000000KWh/Month)	
37	Torrent Power Ltd.(Ahmedabad)	01-04-2007	311.64	311.64	311.64	396.73	446.4	411.62	411.62	-	-	
38	Kolkata (CESC)	01-04-2007	-	-	-	393.17	485.04	442.18	442.18	411.25	373.38	
39	D.V.C. (A) Bihar Area	01-09-2000	-	-	-	-	-	373.79	373.79	359.95	460.96 at 33KV	
	(B)West Bengal Area		-	-	-	-	-	398.45	398.45	383.45	442.07 at 132KV	
40	Durgapur Projects Ltd.	01-04-2007	149.39 ^	149.39 ^	149.39 ^	267.71	297.12	308.31	308.31	306.01	379.41 at 25KV	
											374.41 at 132KV	
41	Mumbai (B.E.S.T)	01-06-2008	-	-	-	748.52	999.22	677.46	677.46	-	-	
	Mumbai (Reliance Energy)	01-06-2008	113.43	113.43	113.43	700.35	813.47	731.6	731.6	-	-	
	Mumbai (TATA'S)	01-06-2008	-	-	-	464.9	691.74	578.39	578.39	-	505.59	
											33/22/11/6.6KV	

U - Urban, R - Rural, ^ TOD tariff from 23:00:00 hrs to 06:00:00 hrs for Durgapur Projects Ltd.

Tariffs notified have varying parameters for tariff in respect of Category various categories of consumers. The above comparison is for certain assumed loads and electricity consumption levels in a month

Source : www.cea.nic.in