

## सारणी संख्या 5.1 - धात्विक खनिज उत्पादन

Table No. 5.1 - Metallic Minerals Production

	अप्रैल	मई	जून	जुलाई	अगस्त	सितम्बर	अक्टूबर	नवम्बर	दिसम्बर	जनवरी	फरवरी	मार्च
	Apr	May	Jun	Jul	Aug	Sep	Oct	Nov	Dec	Jan	Feb	Mar
<b>Bauxite(000 Tonnes)</b>	बाँसहाइट (००० टन)											
2010-11	1216	1185	969	789	814	824	1009	1044	1198	..	1053	1267
2011-12	1030	1380	1037	900	869	1077	1054	1060	1117	1076	1128	1264
2012-13	1158	1239	1179	1038	1073	1001	1271	952	1021	1867	1544	1852
2013-14	1935	1926	1612	1968	1091	1236	1217(R)	1471(R)	2615(P)			
<b>Chromite (000 Tonnes)</b>	क्रोमाइट (००० टन)											
2010-11	418	396	390	194	220	219	346	450	450	..	369	393
2011-12	248	373	317	337	240	174	253	294	385	326	409	379
2012-13	317	349	264	259	260	223	156	172	183	201	267	389
2013-14	118	173	243	200	159	169	155(R)	243(R)	286(P)			
<b>Copper conc (000 Tonnes)</b>	तांबा (००० टन)											
2010-11	279*	289*	285*	288*	286*	273*	321*	288*	315*	..	12	12
2011-12	10	12	11	12	11	11	11	10	13	10	9	11
2012-13	10	10	9	10	9	10	11	11	11	11	10	13
2013-14	11	12	12	11	13	12	12(R)	12(R)	12(P)			
<b>Gold (Kgs)</b>	(क)											
2010-11	180	153	144	200	200	191	197	200	154	..	216	256
2011-12	202	220	253	220	189	147	104	116	171	204	174	174
2012-13	120	143	123	139	125	124	134	138	150	130	128	135
2013-14	118	127	124	97	125	117	114(R)	86(R)	122(P)			
<b>Iron Ore ('000 tonnes)</b>	लोह अयस्क ('००० टन)											
2010-11	21306	20645	15671	13781	13266	12236	15512	17111	19775	..	19024	19120
2011-12	17629	19601	15673	13649	11224	10028	13279	13495	13843	13409	12106	14598
2012-13	15521	15821	12147	10109	9156	8776	10382	9360	11154	11695	10532	11865
2013-14	12366	13234	10957	10715	10341	11129	10436(R)	12666(R)	12406(P)			
<b>Lead Conc. (Tonnes)</b>	सीसा सान्द्र (टन)											
2010-11	9434	10864	11552	10442	10599	10481	11601	12908	14087	..	12839	16655
2011-12	11672	11278	10452	13690	14776	13393	13214	13862	12870	14635	12292	17095
2012-13	15002	15906	13152	14655	12225	13874	14846	16969	16061	17470	16347	17978
2013-14	16385	16597	18168	17522	15072	12326	16123(R)	15174(R)	15735(P)			
<b>Manganese Ore ( 000 Tonnes)</b>	मैंगनीज अयस्क (००० टन)											
2010-11	304	282	254	230	188	199	214	225	294	..	235	236
2011-12	210	235	253	209	160	160	152	183	219	176	195	235
2012-13	182	213	196	160	158	155	158	173	212	188	237	262
2013-14	227	236	186	164	154	195	163(R)	213(R)	237(P)			
<b>Tin Conc.(Kgs)</b>	टिन सान्द्र (कि.ग्राम)											
2010-11	2781	3952	5256	4358	4211	6087	8308	4929	4869	..	8523	3132
2011-12	2936	5307	5396	2849	4243	3482	4757	3340	2900	3751	3350	3721
2012-13	2678	2758	3598	3428	4875	6856	7247	2928	3407	4813	2998	2190
2013-14	3138	392	1239	1655	2351	2593	5570(R)	3140(R)	2597(P)			
<b>Zinc Conc. (Tonnes)</b>	जिंक सान्द्र (टन)											
2010-11	92595	104587	114251	107865	126768	114847	126457	126196	125079	..	113369	138008
2011-12	109351	96585	99368	124720	125798	114027	112773	134696	106125	126685	127393	116959
2012-13	100891	109476	99329	108896	104958	118170	130863	134510	138867	148597	137699	160525
2013-14	123681	143196	132342	137493	129078	112572	136644(R)	115673(R)	124476(P)			

Source : Indian Bureau of Mines, Ministry of Mines

R-Revised, P-Provisional

\* The data pertains to Copper Ore instead of Copper Conc.

स्त्रोत : भारतीय खान ब्यूरो, खान मंत्रालय।

खनिज

Minerals

## सारणी संख्या 5.2 - अधात्विक खनिज उत्पादन

Table No. 5.2 - Non-metallic Minerals Production-Contd.

	Apr	May	Jun	Jul	Aug	Sep	Oct	Nov	Dec	Jan	Feb	Mar
<b>Ball Clay (Tonnes)</b>												बॉल मिट्टी (टन)
2010-11	102905	110870	99461	111754	95835	63340	85913	80479	66731	..	45521	76630
2011-12	87011	127098	124043	109070	98038	99898	90329	77022	138998	133745	171661	155183
2012-13	144842	164240	123320	145103	135108	152755	186537	133717	179740	138955	130460	126392
2013-14	164097	138798	169636	137468	108935	99004	93478(R)	114823(R)	111277(P)			
<b>Chalk (Tonnes)</b>												चाक (टन)
2010-11	21698	20021	15603	5548	1288	4325	9012	11624	18717	..	20150	25600
2011-12	28313	23169	12245	4450	1994	4530	7098	19195	20422	18027	16825	18737
2012-13	19750	19046	14032	14147	7194	8309	9336	12730	16871	17208	14372	14198
2013-14	13980	10175	5892	3721	5313	7636	6479(R)	6288(R)	9719(P)			
<b>Clay (Others) (000 Tonnes)</b>												मिट्टी अन्य (००० टन)
2010-11	90	113	94	92	63	147	157	134	308	..	51	60
2011-12	41	60	68	55	48	17	51	63	88	67	79	87
2012-13	112	148	164	132	124	109	91	152	161	167	172	168
2013-14	160	205	224	199	177	152	200(R)	117(R)	134(P)			
<b>Dolomite (000 Tonnes)</b>												डोलोमाइट (००० टन)
2010-11	406	365	324	385	403	372	390	402	415	..	447	469
2011-12	461	459	440	427	404	405	372	361	460	358	422	485
2012-13	476	554	488	494	495	445	501	501	520	598	593	636
2013-14	568	607	533	523	542	463	527(R)	506(R)	552(P)			
<b>Felspar (Tonnes)</b>												फेल्स्पार (टन)
2010-11	40823	42394	42407	34778	35419	26418	29561	32776	49382	..	49491	42553
2011-12	45165	48442	52984	50284	43195	42819	35625	37795	43086	51508	42889	48392
2012-13	59475	62107	89737	77879	52508	64839	74500	88982	88308	98201	129391	112382
2013-14	87543	83532	96371	78890	74360	71141	68995(R)	59559(R)	49966(P)			
<b>Fireclay (Tonnes)</b>												(1) आग रोक मिट्टी (टन)
2010-11	27711	27944	37557	19924	27698	23684	28866	39960	40509	..	51445	66391
2011-12	87447	88211	83958	56167	51388	52345	45171	45399	47290	54367	45908	56956
2012-13	75780	85641	79712	66000	58893	47762	37901	33088	49389	60569	50603	68340
2013-14	51201	61290	58603	38415	28513	47857	23520(R)	36460(R)	35689(P)			
<b>Diaspore (Tonnes)</b>												डाइस्पोर (टन)
2010-11	2312	2504	1836	2542	2018	1747	1381	1918	2598	..	3201	2597
2011-12	2070	2141	2411	1908	1439	1139	1445	1932	2382	2690	2536	2141
2012-13	1564	1871	1584	1345	651	947	914	1047	1525	1425	1346	1934
2013-14	1035	744	737	1017	503	929	918(R)	978(R)	1453(P)			
<b>Kaolin (000 Tonnes)</b>												(2) कायोलिन (००० टन)
2010-11	266	296	212	148	114	164	190	166	227	..	277	201
2011-12	222	234	242	316	277	178	164	167	177	187	221	218
2012-13	185	213	192	227	130	161	161	98	218	228	247	319
2013-14	380	338	290	303	345	276	373(R)	357(R)	409(P)			

R-Revised, P-Provisional

Contd.

## सारणी संख्या 5.2 - अधात्विक खनिज उत्पादन -समाप्त

Table No. 5.2 - Non-metallic Minerals Production-Contd.

	Apr	May	Jun	Jul	Aug	Sep	Oct	Nov	Dec	Jan	Feb	Mar
<b>Kyanite (Tonnes)</b>	<b>क्यानाइट (टन)</b>											
2010-11	716	570	308	292	310	399	247	305	1092	..	550	414
2011-12	396	236	492	398	371	329	237	298	125	157	468	557
2012-13	512	219	245	39	0	0	0	0	0	43	3	0
2013-14	35	80	115	111	94	127	112(R)	98(R)	125(P)			
<b>Limekankar (Tonnes)</b>	<b>कंकर घना (टन)</b>											
2010-11	47643	48400	45109	43881	43359	41300	24943	13168	16052	..	16979	25436
2011-12	26234	35198	42358	37822	25854	31739	20762	18194	24170	20999	16184	11704
2012-13	13590	34740	22239	26754	12587	15216	6986	20507	23676	18560	15442	7621
2013-14	17103	14466	13630	14652	8754	1647	0(R)	5087(R)	10377(P)			
<b>Limeshell (Tonnes)</b>	<b>घना शैल (टन)</b>											
2010-11	2196	2482	2348	3777	1828	2120	2768	2176	3179	..	1559	2003
2011-12	785	2031	1938	3442	2491	2559	2959	3843	4412	2392	1147	1879
2012-13	1253	1777	1858	1962	1679	1912	1832	1697	2213	2087	2348	2163
2013-14	840	891	1098	1742	2205	1239	1106(R)	1297(R)	1538(P)			
<b>Limestone ('000 tonnes)</b>	<b>घने का पत्थर ('000 टन)</b>											
2010-11	19474	19798	20826	19405	17942	17398	19439	18824	18782	..	21268	22983
2011-12	22886	22231	21001	19820	19370	17969	20126	20856	22032	22308	21875	24378
2012-13	23029	24685	23018	22560	21988	21558	22176	22671	22225	24481	23537	26251
2013-14	25108	24874	22494	23048	19044	20235	22696(R)	22024(R)	21926(P)			
<b>Magnesite (Tonnes)</b>	<b>मैग्नेसाइट (टन)</b>											
2010-11	26475	23432	25304	27370	18835	11136	8616	15718	22699	..	23007	26793
2011-12	22958	19521	17237	19400	16768	10354	13666	21027	22738	10133	20936	20717
2012-13	19749	21218	16926	20226	18786	18661	17608	16299	17808	11597	16233	19927
2013-14	19576	16161	16625	13502	12576	11150	16288(R)	13674(R)	13936(P)			
<b>Quartz (Tonnes)</b>	<b>क्वार्ट्ज (टन)</b>											
2010-11	48460	47866	43587	28881	25854	27168	32817	31930	46227	..	35398	42144
2011-12	45403	44479	26084	38302	40345	38791	29101	36949	32804	33572	27459	29579
2012-13	44724	64749	66741	36619	31153	39471	49493	71473	62872	89342	107613	99247
2013-14	62457	86962	79625	72566	87028	93476	95327(R)	80737(R)	88422(P)			
<b>Quartzite (Tonnes)</b>	<b>क्वार्ट्जाइट (टन)</b>											
2010-11	8996	11825	12318	12340	9884	12309	11141	8438	8280	..	6686	5791
2011-12	6719	7805	6645	16061	12052	14612	13312	8762	13597	14048	15113	23678
2012-13	21909	25227	24443	30199	25103	18570	25866	25867	22812	28817	37151	33294
2013-14	31935	32823	46061	40939	59451	23221	17883(R)	44186(R)	54589(P)			
<b>Sand (Others) ( 000 Tonnes)</b>	<b>रेता (अन्य) (000 टन)</b>											
2010-11	290	197	212	149	158	85	140	134	121	..	161	295
2011-12	387	413	328	177	88	50	29	140	102	213	298	360
2012-13	210	317	201	125	110	120	121	246	338	355	251	257
2013-14	249	371	334	122	350	53	60(R)	105(R)	279(P)			
<b>Silica Sand (000 Tonnes)</b>	<b>सिलिका रेत (000 टन)</b>											
2010-11	222	402	661	163	95	167	135	165	196	..	254	287
2011-12	314	387	262	170	154	253	230	245	539	536	577	506
2012-13	403	455	246	260	187	250	209	161	205	234	268	281
2013-14	284	298	356	477	215	223	258(R)	245(R)	263(P)			
<b>Sillimanite (Tonnes)</b>	<b>सिलिमैनाइट (टन)</b>											
2010-11	2156	2220	2080	2883	2103	2995	2919	2448	2712	..	3701	3464
2011-12	3574	4153	4324	5759	6249	6000	5213	4602	4255	4784	4465	5201
2012-13	3824	3802	3975	2583	3798	3061	1732	2168	3909	5518	4539	4958
2013-14	5269	10858	4909	2521	3744	6691	2634(R)	2646(R)	4008(P)			

Source : Indian Bureau of Mines, Ministry of Mines

स्त्रोत : भारतीय खान ब्यूरो, खान मंत्रालय।

R-Revised, P-Provisional

## सारणी संख्या 5.3 - रासायनिक उर्वरक खनिज और बहुमूल्य व अर्धबहु मूल्यपत्थर का उत्पादन

Table No. 5.3 - Production of Chemical Fertilizer Minerals and Precious &amp; Semi-Precious Stones-Contd.

	Apr	May	Jun	Jul	Aug	Sep	Oct	Nov	Dec	Jan	Feb	Mar
<b>Apatite (Tonnes)</b>												एपाटाइट (टन)
2010-11	624	568	436	240	240	190	165	180	180	..	454	378
2011-12	322	224	250	280	240	230	225	246	310	250	266	210
2012-13	242	0	0	0	0	0	0	0	40	100	100	90
2013-14	120	70	100	80	50	180	140(R)	120(R)	140(P)			
<b>Fluorite(Graded) (Tonnes)</b>												फ्लोराइट (ग्रेडिड) (टन)
2010-11	48	506	79	312	558	46	182	214	290	..	378	505
2011-12	17	46	631	213	242	305	289	227	228	232	264	242
2012-13	252	238	284	0	425	105	0	105	578	0	339	957
2013-14	0	0	50	0	582	0	0(R)	526(R)	640(P)			
<b>Phosphorite (000 Tonnes)</b>												फोस्फोरइट (000 टन)
2010-11	132	178	181	132	149	154	158	192	206	..	224	231
2011-12	172	223	217	194	152	197	199	206	158	160	164	255
2012-13	136	208	188	178	120	132	152	223	208	216	227	148
2013-14	42	92	62	94	58	134	159(R)	131(R)	141(P)			
<b>Salt (Rock) (Tonnes)</b>												नमक (बट्टा) (टन)
2010-11	140	159	122	89	123	126	153	159	177	..	0	0
2011-12	0	0	0	0	0	0	0	0	0	0	0	0
2012-13	0	0	0	0	0	0	0	0	0	0	0	0
2013-14	0	0	0	0	0	0	0(R)	0(R)	0(P)			
<b>Diamond (Carats)</b>												हीरा (कैरेट)
2010-11	2711	3020	5646	940	138	7125	101	4	79	..	0	9
2011-12	9	27	1101	2772	1728	2061	1481	2047	1499	1824	2359	1581
2012-13	1483	2349	2269	3335	2861	2515	2501	2061	2367	3131	2785	4408
2013-14	2928	3735	2735	2338	3810	3001	2798	2180(R)	3206(P)			
<b>Gypsum (000 Tonnes)</b>												जिप्सम (000 टन)
2010-11	180	303	385	321	419	490	474	406	389	..	317	279
2011-12	239	308	284	233	294	220	201	190	203	331	368	452
2012-13	285	265	269	280	267	194	218	292	306	331	310	512
2013-14	178	187	278	233	206	241	217(R)	208(R)	255(P)			
<b>Mica Crude (Tonnes)</b>												अभ्रक अपरिष्कृत (टन)
2010-11	99	69	95	105	88	87	100	108	164	..	91	75
2011-12	66	99	183	82	117	102	68	86	412	110	236	175
2012-13	98	324	107	103	99	80	67	58	89	58	112	120
2013-14	109	160	115	138	133	66	123(R)	163(R)	145(P)			

Source : Indian Bureau of Mines, Ministry of Mines

स्त्रोत : भारतीय खान ब्यूरो, खान मंत्रालय।

R-Revised, P-Provisional

## खनिज

## Minerals

## सारणी संख्या 5.4 - अन्य खनिज का उत्पादन

Table No. 5.4 - Production of Other Minerals-Contd.

	Apr	May	Jun	Jul	Aug	Sep	Oct	Nov	Dec	Jan	Feb	Mar
<b>Barytes (Tonnes)</b>	<b>बराइट्स (टन)</b>											
2010-11	130164	123903	158378	275568	201338	157466	134441	142589	151001	..	191291	175252
2011-12	148025	153165	227394	196431	113754	115611	97262	130867	126948	156359	148218	102008
2012-13	147842	204921	133786	167110	93795	104510	102390	155173	151001	160701	142223	160056
2013-14	117649	120920	107457	90264	76644	79873	59203(R)	69325(R)	120352(P)			
<b>Asbestos (Tonnes)</b>	<b>ऐम्बेस्टस (टन)</b>											
2010-11	23	21	29	17	29	25	23	46	0	..	5	29
2011-12	17	20	11	22	17	25	10	20	27	17	29	41
2012-13	32	31	26	30	18	30	34	27	42	20	19	78
2013-14	7	20	52	32	0	3	4(R)	17(R)	12(P)			
<b>Calcite (Tonnes)</b>	<b>कैल्साइट (टन)</b>											
2010-11	3202	5626	2893	2579	1982	2938	3446	2592	2496	..	2839	2994
2011-12	5669	6563	6231	5955	4203	3171	3973	4574	4216	3079	2436	1785
2012-13	3159	4995	7578	1929	1835	2978	6300	3831	3633	10697	11593	13398
2013-14	11007	6245	9832	3236	2222	4135	5432(R)	9576(R)	9013(P)			
<b>Garnet (Abrasive) (Tonnes)</b>	<b>गार्नेट (अपघर्ष) (टन)</b>											
2010-11	140833	143238	122474	164563	199359	201358	116754	115451	201243	..	192245	243348
2011-12	8955	169263	9819	206055	215858	185643	178530	152751	207633	88096	106650	69713
2012-13	109165	240351	193362	122445	130438	135839	125273	47493	36946	51992	44855	39963
2013-14	67445	67866	67540	81778	58432	50421	9189(R)	7457(R)	8475(P)			
<b>Graphite R.O.M.(Tonnes)</b>	<b>ग्रेफाइट (खान निगम) (टन)</b>											
2010-11	11896	7598	7764	5286	7785	7600	6800	8281	11106	..	12037	12261
2011-12	8955	11129	9819	11140	11137	9430	8441	11170	14430	16121	14649	17008
2012-13	9747	15029	9414	10229	10166	7762	8582	9734	10611	11122	10009	17360
2013-14	12639	12821	16610	13904	15072	15958	9438(R)	10489(R)	11441(P)			
<b>Ochre (Tonnes)</b>	<b>ओचर (टन)</b>											
2010-11	147945	214643	143621	45880	22426	43620	49960	48283	108131	..	101698	93371
2011-12	146412	171365	117778	188910	68660	16037	24439	99359	72099	191186	101044	41132
2012-13	215467	277312	276139	108666	69655	40853	56202	41556	167315	153954	202504	162973
2013-14	83098	170441	54792	39780	15472	50544	32917(R)	100549(R)	85692(P)			
<b>Pyrophyllite (Tonnes)</b>	<b>पाईरोफाइलाइट (टन)</b>											
2010-11	17010	18033	15094	17745	18655	16872	13666	12566	23111	..	27250	27040
2011-12	21135	23618	24333	22291	12526	17671	13630	18283	158042	26799	27680	21060
2012-13	18550	26185	22688	18785	14450	19248	16627	17529	23485	21178	22547	22553
2013-14	13590	14317	17076	16681	10257	12471	13075(R)	13835(R)	21506(P)			
<b>Steatite (Tonnes)</b>	<b>स्टीटाइट (टन)</b>											
2010-11	88488	82736	77128	72973	59626	52214	56629	53624	78142	..	86810	83225
2011-12	90539	86390	78910	49677	44858	44731	62793	72465	90959	104675	97398	85588
2012-13	80738	96156	99297	87082	55861	38597	66855	70198	78327	82306	74957	76200
2013-14	76188	80588	71478	54741	46266	60678	60418(R)	63507(R)	68919(P)			
<b>Vermiculite (Tonnes)</b>	<b>वर्मीकुलाइट (टन)</b>											
2010-11	1037	664	655	1161	1086	3827	3265	1213	2352	..	1731	1545
2011-12	1163	947	1652	1394	458	210	114	98	1790	453	535	1722
2012-13	768	257	679	450	601	1265	510	913	230	364	459	1078
2013-14	1550	972	323	161	370	256	200(R)	390(R)	1163(P)			
<b>Wollastonite (Tonnes)</b>	<b>वोल्लास्टोनाइट (टन)</b>											
2010-11	14251	14276	14820	14331	11875	13711	14770	12110	18400	..	17505	17624
2011-12	18428	19137	15991	16861	13465	12121	13650	14243	13595	14453	14105	14726
2012-13	14492	16571	17374	14666	15714	15886	11423	10669	7933	3834	2892	17113
2013-14	9922	12515	13116	14990	20050	19883	19358(R)	22209(R)	20321(P)			

R-Revised, P-Provisional

Contd.

## सारणी संख्या 5.4- अन्य खनिज का उत्पादन - समाप्त

Table No. 5.4 - Production of Other Minerals-Concl'd.

	Apr	May	Jun	Jul	Aug	Sep	Oct	Nov	Dec	Jan	Feb	Mar
<b>Dunite (Tonnes)</b>	<b>इयूनइट (टन)</b>											
2010-11	2180	2070	1600	3225	1000	..	..	1420	2360	..	1446	1536
2011-12	1580	2210	1480	2390	2866	704	..	3636	5115	4110	3688	8365
2012-13	8120	9120	10352	9400	10330	5045	5068	6309	5720	5265	5245	4930
2013-14	3895	3900	4400	5920	4960	3725	5432(R)	8020(R)	4997(P)			
<b>Felsite (Tonnes)</b>	<b>फेल्साइट (टन)</b>											
2010-11	94	94	94	95	77	55	54	53	64	..	47	46
2011-12	36	41	64	92	52	30	50	107	100	48	54	63
2012-13	79	68	33	74	58	66	34	33	27	88	86	82
2013-14	90	103	105	24	13	29	30(R)	71(R)	70(P)			
<b>Laterite (Tonnes)</b>	<b>लेटेराइट (टन)</b>											
2010-11	143143	172084	119470	28896	50803	27909	42994	30364	50777	..	67093	70828
2011-12	211223	116707	43326	29956	46165	45928	52976	136680	139455	127250	178212	165386
2012-13	266533	253303	307849	231502	249948	217863	268764	238666	306107	302396	303661	356656
2013-14	366531	405163	328466	279143	209845	202364	183626(R)	228586(R)	242235(P)			
<b>Shale (000 Tonnes)</b>	<b>शैल (000 टन)</b>											
2010-11	201	214	185	238	177	242	274	181	247	..	301	298
2011-12	284	275	208	262	289	279	282	268	286	273	275	348
2012-13	654	405	546	213	214	266	231	254	214	271	235	275
2013-14	286	269	248	228	196	233	228(R)	260(R)	240(P)			

Source : Indian Bureau of Mines, Ministry of Mines

स्त्रोत : भारतीय खान ब्यूरो, खान मंत्रालय।

R-Revised, P-Provisional

## सारणी संख्या 5.5 -खनिज उत्पादन के सूचकांक

Table No.5.5 - Index of Mineral Production

Base : 2004-05=100

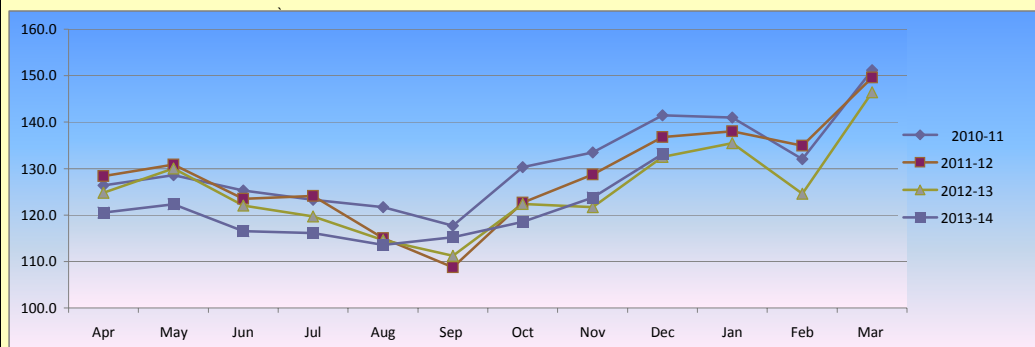
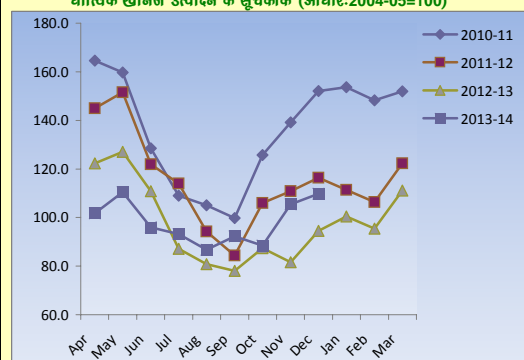
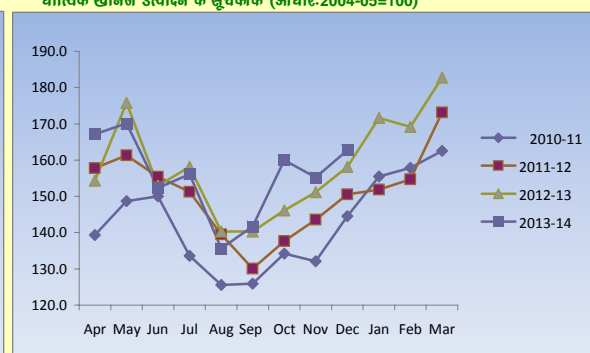
	अप्रैल	मई	जून	जुलाई	अगस्त	सितम्बर	अक्टूबर	नवम्बर	दिसम्बर	जनवरी	फरवरी	मार्च
	Apr	May	Jun	Jul	Aug	Sep	Oct	Nov	Dec	Jan	Feb	Mar
<b>All Minerals: Weight 1000</b>	<b>सभी खनिज (1000.000)</b>											
2010-11	126.4	128.6	125.3	123.3	121.7	117.7	130.3	133.5	141.5	141.0	132.0	151.2
2011-12	128.4	130.9	123.5	124.1	115.0	108.8	122.6	128.8	136.8	138.0	135.0	149.6
2012-13	124.8	130.0	122.1	119.7	114.6	111.2	122.4	121.7	132.5	135.5	124.6	146.4
2013-14	120.5	122.3	116.5	116.1	113.6	115.2	118.5(R)	123.8(R)	133.1(P)			
<b>Minerals under MCDR,1988</b>	<b>एम. सी. डी. आर. 88 के अंतर्गत खनिज (131.397)</b>											
	Weight- Base 2004-05=131.397											
2010-11	159.3	157.4	133.0	114.1	109.3	105.2	127.5	137.7	150.5	154.0	150.2	154.2
2011-12	147.6	153.6	128.9	121.8	103.6	93.9	112.6	117.6	123.6	119.8	116.4	132.9
2012-13	129.0	137.2	119.6	102.0	93.2	91.1	99.6	96.1	107.8	115.4	110.8	126.1
2013-14	115.4	122.8	107.8	106.3	96.9	102.6	103.4(R)	115.8(R)	120.8(P)			
<b>Metallic Minerals</b>	<b>धात्विक खनिज (103.983)</b>											
	Weight -Base 2004-05=103.983											
2010-11	164.6	159.7	128.5	109.0	105.1	99.8	125.7	139.2	152.1	153.7	148.2	151.9
2011-12	145.0	151.6	121.9	114.0	94.2	84.4	106.0	110.8	116.4	111.4	106.3	122.4
2012-13	122.3	127.0	110.8	87.2	80.8	78.1	87.4	81.6	94.5	100.5	95.4	111.1
2013-14	101.8	110.4	96.0	93.2	86.7	92.3	88.5(R)	105.4(R)	109.8(R)			
<b>Non Metallic Minerals</b>	<b>अधात्विक खनिज (27.414)</b>											
	Weight- Base 2004-05=27.414											
2010-11	139.4	148.7	150.0	133.6	125.6	125.9	134.2	132.1	144.5	155.5	157.9	162.6
2011-12	157.8	161.3	155.4	151.3	139.5	130.1	137.6	143.5	150.6	151.9	154.7	173.1
2012-13	154.3	175.8	152.9	158.1	140.3	140.3	146.1	151.2	158.1	171.6	169.2	182.8
2013-14	167.1	170.1	152.3	156.1	135.6	141.7	160.0(R)	155.2(R)	162.7(P)			

Source : Indian Bureau of Mines, Ministry of Mines

स्त्रोत : भारतीय खान ब्यूरो, खान मंत्रालय।

R-Revised, P-Provisional

April 2010 to Dec 2010 : Base 1993-94 =100

Index of All Minerals Production (Base: 2004-05=100)  
सभी खनिज उत्पादन के सूचकांक (आधार:2004.05=100)Index of Metallic Minerals Production (Base: 2004-05=100)  
धात्विक खनिज उत्पादन के सूचकांक (आधार:2004-05=100)Index of Non -Metallic Minerals Production (Base: 2004-05=100)  
अधात्विक खनिज उत्पादन के सूचकांक (आधार:2004-05=100)

खनिज

Minerals

## सारणी संख्या 5.6 - धात्विक खनिज उत्पादन के सूचकांक

Table No. 5.6 - Index of Metallic Minerals Production

Base : 2004-05=100

	Apr	May	Jun	Jul	Aug	Sep	Oct	Nov	Dec	Jan	Feb	Mar
<b>Bauxite</b>	Weight - Base 2004-05=2.812											बॉक्साइट (2११12)
2010-11	121.9	118.9	97.2	79.2	79.6	82.6	101.3	104.7	107.3	117.8	105.6	127.1
2011-12	104.0	138.4	104.7	90.3	87.1	108.1	105.8	106.3	112.0	107.9	113.2	126.8
2012-13	116.1	124.3	119.4	104.1	107.6	100.4	127.5	95.5	102.4	187.3	154.8	185.7
2013-14	194.1	193.2	161.7	197.4	109.4	124.0	122.1(R)	147.5(R)	262.3(P)			
<b>Chromite</b>	Weight - Base 2004-05=10.279											क्रोमाइट (10१279)
2010-11	138.5	131.2	129.1	64.4	72.9	72.5	114.8	149.3	148.9	111.2	122.2	130.1
2011-12	104.8	123.5	107.0	111.7	79.4	57.7	84.0	97.3	127.4	108.2	135.4	125.5
2012-13	105.2	115.8	106.8	86.0	86.2	73.9	51.7	56.9	60.8	66.5	88.3	129.0
2013-14	39.0	57.4	80.6	66.3	52.7	56.2	51.3(R)	80.5(R)	94.6(P)			
<b>Copper Conc.</b>	Weight - Base 2004-05=2.235											तांबा अयस्क (2१235)
2010-11	102.2	106.3	108.3	91.8	94.1	88.0	98.3	91.5	97.7	107.1	107.4	106.3
2011-12	87.4	101.1	97.8	105.7	94.6	93.3	92.8	90.2	112.3	90.8	77.2	99.5
2012-13	86.0	84.1	87.0	87.0	75.6	90.1	96.3	93.3	92.5	100.2	83.7	114.7
2013-14	97.3	105.0	107.7	97.4	110.1	101.5	101.1(R)	103.0(R)	101.3(P)			
<b>Gold</b>	Weight - Base 2004-05=1.930											सोना (1१930)
2010-11	61.3	52.1	49.0	68.1	68.1	65.0	67.0	68.1	52.8	50.7	73.5	87.1
2011-12	86.1	74.9	74.5	74.9	64.3	50.0	35.4	39.5	58.2	69.4	59.2	59.2
2012-13	40.8	48.7	47.3	47.3	42.5	42.2	45.6	47.0	51.1	44.2	43.6	45.9
2013-14	40.2	43.2	42.2	33.0	42.5	39.8	38.8(R)	29.3(R)	41.5(P)			
<b>Iron Ore</b>	Weight - Base 2004-05=76.468											लोह अयस्क (76१68)
2010-11	175.2	169.8	128.9	113.3	107.1	100.6	127.6	140.7	156.6	164.6	156.4	157.2
2011-12	155.1	161.2	123.5	112.2	92.3	82.5	109.2	111.0	113.8	110.3	99.5	120.0
2012-13	127.6	130.1	112.0	83.1	75.3	72.2	85.4	77.0	91.7	96.2	86.6	97.6
2013-14	101.7	108.8	90.1	88.1	85.0	91.5	85.8(R)	104.2(R)	102.0(P)			
<b>Lead Conc.</b>	Weight - Base 2004-05=0.500											सीसा सान्द्र (0१500)
2010-11	138.6	159.6	169.7	153.4	155.7	154.0	170.5	189.7	207.0	199.5	188.6	244.7
2011-12	199.8	165.7	153.6	201.1	217.1	196.8	194.2	203.7	189.1	215.0	180.6	251.2
2012-13	220.4	233.7	215.3	215.3	179.6	203.8	218.1	249.3	236.0	256.7	240.2	264.1
2013-14	240.7	243.9	266.9	257.4	221.4	181.1	236.9(R)	222.9(R)	231.2(P)			
<b>Manganese Ore</b>	Weight - Base 2004-05=6.692											मैंगनीज अयस्क (6१692)
2010-11	152.9	142.0	127.8	115.4	95.6	100.1	107.8	113.1	136.6	114.1	118.7	118.6
2011-12	102.1	118.3	126.7	105.0	80.3	80.9	76.4	91.8	110.0	88.5	97.8	118.0
2012-13	91.5	106.9	79.4	80.6	79.6	78.0	79.3	86.9	106.6	94.7	119.3	131.8
2013-14	114.3	118.7	93.7	82.5	77.3	98.2	89.1(R)	107.1(R)	119.3(P)			
<b>Tin Conc.</b>	Weight - Base 2004-05=0.055											सीसा सान्द्र (0१055)
2010-11	142.0	201.8	268.4	222.5	215.0	310.8	424.2	251.7	248.6	252.6	435.2	159.9
2011-12	305.4	271.0	275.5	145.5	216.6	177.8	242.9	170.5	148.1	191.5	171.0	190.0
2012-13	136.7	140.8	175.0	175.0	248.9	350.1	370.0	149.5	174.0	245.7	153.1	111.8
2013-14	160.2	20.0	63.3	84.5	120.0	132.4	284.4(R)	160.3(R)	132.6(P)			
<b>Zinc Conc.</b>	Weight - Base 2004-05=3.063											ज़िंक सान्द्र (3१063)
2010-11	166.7	188.3	205.7	194.2	228.3	206.8	227.7	227.2	218.8	234.2	204.1	248.5
2011-12	229.0	173.9	178.9	224.6	226.5	205.3	203.1	242.5	191.1	228.1	229.4	210.6
2012-13	181.7	197.1	196.1	196.1	189.0	212.8	235.6	242.2	250.1	267.6	248.0	289.1
2013-14	222.7	257.9	238.3	247.6	232.4	202.7	246.1(R)	208.3(R)	224.1(P)			

Source : Indian Bureau of Mines, Ministry of Mines

स्त्रोत : भारतीय खान ब्यूरो, खान मंत्रालय।

R-Revised, P-Provisional

April 2010 to Dec 2010 : Base 1993-94 =100



## सारणी संख्या 5.7 - अधात्विक खनिज उत्पादन के सूचकांक

Table No. 5.7 - Index of Non--Metallic minerals Production-Contd.

Base : 2004-05=100

	Apr	May	Jun	Jul	Aug	Sep	Oct	Nov	Dec	Jan	Feb	Mar
<b>Ball Clay</b>	<b>Weight- Base 2004-05=0.151</b>											<b>बॉल मिट्टी (07151)</b>
2010-11	193.9	208.9	187.4	210.5	133.5	119.3	161.8	151.6	132.7	110.6	85.8	144.4
2011-12	163.9	239.4	238.4	205.5	184.7	188.2	170.2	145.1	261.8	251.9	323.4	292.3
2012-13	272.9	309.4	244.7	273.3	254.5	287.8	351.4	251.9	338.6	261.8	245.8	238.1
2013-14	309.1	261.5	319.6	259.0	205.2	186.5	176.1(R)	216.3(R)	209.6			
<b>Chalk</b>	<b>Weight- Base 2004-05=0.034</b>											<b>चाक (07034)</b>
2010-11	201.0	185.4	144.5	51.4	30.7	40.1	83.5	107.7	170.3	203.4	186.6	237.1
2011-12	262.2	214.6	113.4	41.2	18.5	42.0	65.7	177.8	189.1	167.0	155.8	173.5
2012-13	182.9	176.4	131.0	131.0	66.6	77.0	86.5	117.9	156.3	159.4	133.1	131.5
2013-14	129.5	94.2	54.6	34.5	49.2	70.7	60.0(R)	58.2(R)	90.0(P)			
<b>Clay (Others)</b>	<b>Weight- Base 2004-05=0.064</b>											<b>मिट्टी (अन्य) (07064)</b>
2010-11	87.1	109.1	90.7	89.0	61.9	14.2	15.2	13.0	29.8	15.9	49.3	58.0
2011-12	39.7	57.8	65.8	53.3	46.4	16.4	49.7	61.0	85.0	64.6	76.8	84.4
2012-13	108.7	143.1	116.3	127.6	120.3	105.6	87.7	147.2	155.7	161.7	166.4	162.6
2013-14	154.5	198.7	216.1	192.6	170.7	147.1	193.1(R)	113.6(R)	129.1(P)			
<b>Dolomite</b>	<b>Weight- Base 2004-05=1.041</b>											<b>डॉलोमाइट (17041)</b>
2010-11	112.4	101.0	89.5	106.6	110.8	102.9	107.8	111.2	114.8	121.5	123.6	129.6
2011-12	127.7	126.9	121.7	118.0	111.8	111.9	102.8	99.8	127.2	99.1	116.8	134.1
2012-13	131.6	153.1	114.1	136.7	137.0	123.1	138.5	138.5	143.9	165.5	164.1	175.8
2013-14	157.1	167.9	147.5	144.7	149.9	127.9	145.8(R)	139.9(R)	152.6(P)			
<b>Felspar</b>	<b>Weight- Base 2004-05=0.056</b>											<b>फ़ेल्स्पार (07056)</b>
2010-11	129.2	134.2	134.3	110.1	89.0	83.6	93.6	103.8	156.3	160.6	156.7	134.7
2011-12	143.0	153.4	167.7	159.2	136.8	135.6	112.8	119.7	136.4	163.1	135.8	153.2
2012-13	188.3	196.6	181.3	246.6	166.2	205.3	235.9	281.7	279.6	310.9	409.6	355.8
2013-14	277.1	264.4	305.1	249.8	235.4	225.2	218.4(R)	188.6(R)	158.2(P)			
<b>Fireclay</b>	<b>Weight- Base 2004-05=0.114</b>											<b>आग रोक मिट्टी (07114)</b>
2010-11	50.2	50.6	68.0	36.1	51.4	42.9	52.3	72.4	73.4	98.2	93.2	120.2
2011-12	158.4	159.8	152.0	101.7	93.1	94.8	81.8	82.2	85.6	98.5	83.1	103.1
2012-13	137.2	155.1	134.3	119.5	106.7	86.5	68.6	59.9	89.4	109.7	91.6	123.8
2013-14	92.7	111.0	106.1	69.8	51.6	86.7	42.6(R)	66.0(R)	64.6(P)			
<b>Diaspore</b>	<b>Weight- Base 2004-05=0.012</b>											<b>डायस्पोर (07012)</b>
2010-11	132.1	143.0	104.9	145.2	115.3	99.8	78.9	109.6	148.4	135.0	182.8	148.3
2011-12	118.2	122.3	137.7	109.0	82.2	65.1	82.5	110.4	136.1	153.7	144.9	122.3
2012-13	89.3	106.9	77.0	76.8	37.2	54.1	52.2	59.8	87.1	81.4	76.9	110.5
2013-14	59.1	42.5	42.1	58.1	28.7	53.1	52.4(R)	55.9(R)	83.0(P)			
<b>Kaolin</b>	<b>Weight- Base 2004-05=1.414</b>											<b>कायोलिन (17414)</b>
2010-11	341.4	380.5	271.9	190.9	135.0	210.4	244.4	213.6	292.0	362.3	356.0	258.5
2011-12	285.6	301.6	311.6	406.2	356.2	228.8	211.2	214.4	227.4	240.3	284.1	280.0
2012-13	238.2	273.6	167.0	291.5	167.7	207.5	207.5	129.4	279.8	293.1	317.2	410.0
2013-14	488.0	434.3	373.1	389.7	442.9	354.2	478.9(R)	459.2(R)	526.2(P)			

Source : Indian Bureau of Mines, Ministry of Mines

स्त्रोत : भारतीय खान ब्यूरो, खान मंत्रालय।

R-Revised, P-Provisional

Contd.

April 2010 to Dec 2010 : Base 1993-94 =100

## खनिज

## Minerals

## सारणी संख्या 5.7 - अधात्विक खनिज उत्पादन के सूचकांक -समाप्त

Table No. 5.7 - Index of Non-metallic Minerals Production-Concl'd.

Base : 2004-05=100

	Apr	May	Jun	Jul	Aug	Sep	Oct	Nov	Dec	Jan	Feb	Mar
<b>Kyanite</b>	<b>Weight- Base 2004-05=0.008</b>											<b>क्यानइट (0००08)</b>
2010-11	104.7	83.3	45.0	42.7	45.3	58.3	36.1	44.6	159.7	46.5	80.4	60.5
2011-12	57.9	34.5	71.9	58.2	54.2	48.1	34.7	43.6	18.3	23.0	68.4	81.4
2012-13	74.9	32.0	5.7	5.7	0.0	0.0	0.0	0.0	0.0	6.3	0.4	0.0
2013-14	5.1	11.7	16.8	16.2	13.7	18.6	16.4(R)	14.3(R)	18.3(P)			
<b>Limekankar</b>	<b>Weight- Base 2004-05=0.111</b>											<b>कंकर घना (0०111)</b>
2010-11	121.5	123.4	115.0	111.9	110.6	105.3	63.6	33.6	40.9	44.9	43.3	64.9
2011-12	66.9	89.8	108.0	96.5	65.9	81.0	52.95	46.4	61.64	53.6	41.3	29.9
2012-13	34.7	88.6	68.2	68.2	32.1	38.8	17.8	52.3	60.4	47.3	39.4	19.4
2013-14	43.6	36.9	34.8	37.4	22.3	4.2	0.0(R)	13.0(R)	26.5(P)			
<b>Limeshell</b>	<b>Weight -Base 2004-05=0.089</b>											<b>घना शेल (0०089)</b>
2010-11	19.1	21.6	20.4	32.8	20.4	18.4	24.1	18.9	27.6	16.8	13.6	17.4
2011-12	6.82	17.7	16.8	29.9	21.7	22.2	25.7	33.4	38.4	20.8	10.0	16.3
2012-13	10.9	15.4	13.4	17.1	14.6	16.6	15.9	14.8	19.2	18.1	20.4	18.8
2013-14	7.3	7.7	9.5	15.1	19.2	10.8	9.6(R)	11.3(R)	13.4(P)			
<b>Limestone</b>	<b>Weight- Base 2004-05=16.984</b>											<b>घने का पत्थर (16९84)</b>
2010-11	141.0	143.3	150.8	140.5	134.2	126.0	140.7	136.3	136.0	145.0	154.0	166.4
2011-12	165.7	161.0	152.0	143.5	140.2	130.1	145.7	151.0	159.5	161.5	158.4	179.5
2012-13	166.7	178.7	165.1	163.3	159.2	156.1	160.6	164.1	160.9	177.2	170.4	190.1
2013-14	181.8	180.1	162.9	166.9	137.9	146.5	164.3(R)	159.5(R)	158.7(P)			
<b>Magnesite</b>	<b>Weight- Base 2004-05=0.335</b>											<b>मैग्नेसाइट (0०335)</b>
2010-11	82.7	73.2	79.1	85.5	48.2	34.8	26.9	49.1	70.9	69.8	71.9	83.7
2011-12	71.8	61.0	53.9	60.6	52.4	32.4	42.7	65.7	71.1	31.7	65.4	64.8
2012-13	61.7	66.3	54.6	63.2	58.7	58.3	55.0	50.9	55.7	36.3	50.7	62.3
2013-14	61.2	50.5	52.0	42.2	39.3	34.9	50.9(R)	42.7(R)	43.6(P)			
<b>Quartz</b>	<b>Weight -Base 2004-05=0.053</b>											<b>क्वार्ट्ज (0०053)</b>
2010-11	182.3	180.1	164.0	108.6	101.4	102.2	123.5	120.1	173.9	162.6	133.2	158.5
2011-12	170.8	167.3	98.1	144.1	151.8	145.9	109.5	139.0	123.4	126.3	103.3	111.3
2012-13	168.2	243.6	144.6	137.8	117.2	148.5	186.2	268.9	236.5	336.1	404.8	373.3
2013-14	235.0	327.1	299.5	273.0	327.4	351.6	358.6(R)	303.7(R)	332.6(P)			
<b>Quartzite</b>	<b>Weight -Base 2004-05=0.094</b>											<b>क्वार्ट्जाइट (0०094)</b>
2010-11	111.3	146.2	152.3	152.6	130.5	152.2	137.8	104.4	102.4	51.2	82.7	71.6
2011-12	83.1	96.5	82.2	198.6	149.0	180.7	164.6	108.4	168.2	177.7	186.9	292.8
2012-13	270.9	312.0	273.5	373.5	310.4	229.7	319.9	319.9	282.1	356.4	459.4	411.7
2013-14	394.9	405.9	569.6	506.3	735.2	287.2	221.2(R)	546.4(R)	675.1(P)			
<b>Sand (Others)</b>	<b>Weight- Base 2004-05=0.061</b>											<b>रेता (अन्य) (0०061)</b>
2010-11	232.3	158.1	170.2	119.3	126.7	68.1	112.0	107.5	97.4	144.6	129.2	236.4
2011-12	310.2	331.9	263.2	142.0	70.67	39.99	23.0	112.1	81.8	171.0	239.2	289.1
2012-13	168.3	253.9	100.4	100.4	88.4	96.3	96.9	197.2	271.5	284.5	201.3	206.3
2013-14	199.8	297.3	268.0	97.5	28.1	42.4	48.0(R)	84.3(R)	223.6(P)			
<b>Silica Sand</b>	<b>Weight -Base 2004-05=0.299</b>											<b>सिलिका रेत (0०299)</b>
2010-11	135.5	245.9	404.0	99.5	84.1	102.2	82.4	101.0	119.9	120.4	155.4	175.6
2011-12	192.0	236.8	160.3	103.9	94.3	154.8	141.0	149.6	329.7	327.7	352.6	309.7
2012-13	246.6	278.2	244.9	159.0	114.6	152.7	127.8	98.5	125.3	143.3	163.6	171.8
2013-14	173.8	182.4	217.5	291.8	131.3	136.4	157.5(R)	150.0(R)	160.6(P)			
<b>Sillimanite</b>	<b>Weight- Base 2004-05=0.122</b>											<b>सिलिमेनाइट (0०122)</b>
2010-11	84.2	86.7	81.3	112.7	82.3	117.0	114.1	95.7	106.0	100.1	144.6	135.4
2011-12	139.7	162.3	169.0	225.0	244.2	234.4	203.7	179.8	166.3	186.9	174.5	203.2
2012-13	149.4	148.6	88.3	100.9	148.4	119.6	67.7	84.7	152.7	215.6	177.4	193.7
2013-14	205.9	424.3	191.8	98.5	146.3	261.4	102.9(R)	103.4(R)	156.6(P)			

Source : Indian Bureau of Mines, Ministry of Mines

स्त्रोत : भारतीय खान ब्यूरो, खान मंत्रालय।

R-Revised, P-Provisional

April 2010 to Dec 2010 : Base 1993-94 =100

## सारणी सं 5.8 - रासायनिक उर्वरक खनिज और बहुमूल्य व अर्धबहुमूल्य पत्थर के सूचकांक

Table No. 5.8 -Index of Chemical Fertilizer Mineral, Precious &amp; Semi-precious Stones

Base : 2004-05=100

	Apr	May	Jun	Jul	Aug	Sep	Oct	Nov	Dec	Jan	Feb	Mar
<b>Apatite</b>	<b>Weight- Base 2004-05=0.018</b>											<b>एपाटाइट (०१०18)</b>
2010-11	87.1	79.3	60.9	33.5	33.5	26.5	23.0	25.1	25.1	26.5	63.4	52.8
2011-12	45.0	31.3	34.9	39.1	33.5	32.1	31.4	34.3	43.3	34.9	37.1	29.3
2012-13	33.8	0.0	0.0	0.0	0.0	0.0	0.0	0.0	5.6	14.0	14.0	12.6
2013-14	16.8	9.8	14.0	11.2	6.7	25.1	19.5(R)	16.8(R)	19.5(P)			
<b>Fluorite(Graded)</b>	<b>Weight- Base 2004-05=0.021</b>											<b>फ्लोराइट (ग्रेडिड) (०१०21)</b>
2010-11	9.2	96.5	15.1	59.5	106.4	8.8	34.7	40.8	55.3	6.1	72.1	96.3
2011-12	3.2	8.8	120.4	40.6	46.2	58.2	55.1	43.3	43.5	21.8	50.4	46.2
2012-13	48.1	45.4	49.8	0.0	81.1	20.0	0.0	20.0	110.3	0.0	64.7	182.6
2013-14	0.0	0.0	9.5	0.0	111.0	0.0	0.0(R)	100.3(R)	122.1(P)			
<b>Phosphorite</b>	<b>Weight -Base 2004-05=3.518</b>											<b>फोस्फोराइट (अ१०18)</b>
2010-11	92.1	124.2	126.4	91.9	104.0	107.5	110.0	133.7	143.2	149.2	155.7	161.2
2011-12	119.8	155.1	151.3	135.1	106.0	137.2	138.7	143.6	110.1	111.3	114.4	177.4
2012-13	94.8	144.8	124.3	124.3	83.9	92.0	105.7	155.2	144.5	150.5	157.9	103.0
2013-14	29.5	63.9	42.9	65.5	40.5	93.7	111.1(R)	91.5(R)	98.0(P)			
<b>Salt (Rock)</b>	<b>Weight -Base 2004-05=0.004</b>											<b>नमक (चट्टान) (०१००4)</b>
2010-11	0.0	0.0	0.0	0.0	0.0	0.0	0.0	0.0	0.0	0.0	0.0	0.0
2011-12	0.0	0.0	0.0	0.0	0.0	0.0	0.0	0.0	0.0	0.0	0.0	0.0
2012-13	0.0	0.0	0.0	0.0	0.0	0.0	0.0	0.0	0.0	0.0	0.0	0.0
2013-14	0.0	0.0	0.0	0.0	0.0	0.0	0.0(R)	0.0(R)	0.0(P)			
<b>Diamond</b>	<b>Weight- Base 2004-05=0.355</b>											<b>हीरा (०१०35)</b>
2010-11	41.5	46.3	86.5	14.4	2.1	109.2	1.6	0.1	1.2	0.0	0.0	0.1
2011-12	0.1	0.4	16.9	42.5	26.5	31.6	22.7	31.4	23.0	27.9	36.2	24.2
2012-13	22.7	36.0	51.1	51.1	43.8	38.5	38.3	31.6	36.3	48.0	42.7	67.5
2013-14	44.9	57.2	41.9	35.8	58.4	46.0	42.9(R)	33.4(R)	49.1(P)			
<b>Gypsum</b>	<b>Weight- Base 2004-05=0.643</b>											<b>जिप्सम (०१०43)</b>
2010-11	58.6	98.6	125.5	104.6	110.8	159.6	154.5	132.4	126.7	133.7	103.4	90.8
2011-12	77.7	100.3	92.6	75.7	95.9	71.6	65.5	61.8	66.2	107.9	119.7	147.1
2012-13	92.9	86.2	99.4	91.2	87.1	63.1	70.8	95.2	99.6	107.7	100.9	166.9
2013-14	58.0	60.9	90.7	76.0	67.1	78.5	70.7(R)	67.8(R)	82.9(P)			
<b>Mica Crude</b>	<b>Weight -Base 2004-05=0.033</b>											<b>अन्नक सान्द्र (०१०33)</b>
2010-11	93.1	64.9	89.3	98.8	80.9	81.8	94.0	101.6	154.2	143.9	85.6	70.5
2011-12	62.1	93.1	172.1	77.1	110.0	95.9	64.0	80.9	387.5	103.5	221.9	164.6
2012-13	92.2	304.7	91.2	96.9	93.1	75.2	63.0	54.6	83.7	54.6	105.3	112.9
2013-14	102.5	150.5	108.2	129.8	125.1	62.1	115.7(R)	153.3(R)	136.4(P)			

Source : Indian Bureau of Mines, Ministry of Mines

स्त्रोत : भारतीय खान ब्यूरो, खान मंत्रालय।

R-Revised, P-Provisional

April 2010 to Dec 2010 : Base 1993-94 =100

खनिज

Minerals

## सारणी संख्या 5.9 - अन्य खनिज के सूचकांक

Table No. 5.9 - Index of Other Minerals

Base : 2004-05=100

	Apr	May	Jun	Jul	Aug	Sep	Oct	Nov	Dec	Jan	Feb	Mar
<b>Barytes</b>	<b>Weight- Base 2004-05=0.658</b>											
2010-11	134.8	128.3	164.0	285.3	208.5	163.0	139.2	147.6	323.0	343.3	198.1	181.5
2011-12	153.3	158.6	235.4	203.4	117.8	119.7	100.7	135.5	131.4	161.9	153.5	105.6
2012-13	153.1	212.2	173.2	173.0	97.1	108.2	106.0	160.7	156.3	166.4	147.3	165.7
2013-14	121.8	125.2	111.3	93.5	79.4	82.7	61.3(R)	71.8(R)	124.6(P)			
<b>Asbestos</b>	<b>Weight- Base 2004-05=0.021</b>											
2010-11	4.3	3.9	5.4	3.2	5.4	4.7	4.3	8.6	0.0	2.1	0.9	5.4
2011-12	3.2	3.8	2.1	4.1	3.2	4.7	1.9	3.8	5.1	3.2	5.4	7.7
2012-13	6.0	5.8	6.4	5.6	3.4	5.6	6.4	5.1	7.9	3.8	3.6	14.6
2013-14	1.3	3.8	9.8	6.0	0.0	0.6	0.8(R)	3.2(R)	2.3(P)			
<b>Calcite</b>	<b>Weight- Base 2004-05=0.019</b>											
2010-11	57.4	100.8	51.8	46.2	52.0	52.6	61.7	46.4	44.7	56.6	50.9	53.6
2011-12	101.6	117.6	111.6	106.7	75.3	56.8	71.2	81.9	75.5	55.2	43.6	32.0
2012-13	56.6	89.5	34.6	34.6	32.9	53.4	112.9	68.6	65.1	191.6	207.7	240.0
2013-14	197.2	111.9	176.1	58.0	39.8	74.1	97.3(R)	171.6(R)	161.5(P)			
<b>Garnet(Abrasive)</b>	<b>Weight- Base 2004-05=0.164</b>											
2010-11	263.1	267.6	228.8	307.4	378.5	376.2	218.1	215.7	376.0	373.6	359.2	454.6
2011-12	396.2	316.2	340.2	385.0	403.3	346.8	333.5	285.4	387.9	164.6	199.2	130.2
2012-13	203.9	449.0	230.1	228.8	243.7	253.8	234.0	88.7	69.0	97.1	83.8	74.7
2013-14	126.0	126.8	126.2	152.8	109.2	94.2	17.2(R)	13.9(R)	15.8(P)			
<b>Graphite R O M</b>	<b>Weight- Base 2004-05=0.042</b>											
2010-11	132.0	84.3	86.2	58.7	89.4	84.3	75.5	91.9	123.2	106.8	133.6	136.0
2011-12	99.4	123.5	109.0	123.6	123.6	104.6	93.66	123.9	160.1	178.9	162.5	188.7
2012-13	108.2	166.8	110.6	113.5	112.8	86.1	95.2	108.0	117.7	123.4	111.1	192.6
2013-14	140.2	142.3	184.3	154.3	167.2	177.1	104.7(R)	116.4(R)	127.0(P)			
<b>Ochre</b>	<b>Weight- Base 2004-05=0.066</b>											
2010-11	193.2	280.3	187.5	59.9	27.8	57.0	65.2	63.1	141.2	126.0	132.8	121.9
2011-12	191.2	223.8	153.8	246.7	89.7	20.9	31.9	129.7	94.1	249.6	131.9	53.7
2012-13	281.3	362.1	362.9	141.9	91.0	53.3	73.4	54.3	218.5	201.0	264.4	212.8
2013-14	108.5	222.6	71.5	51.9	20.2	66.0	43.0(R)	131.3(R)	111.9(P)			
<b>Pyrophyllite</b>	<b>Weight- Base 2004-05=0.049</b>											
2010-11	75.3	79.8	66.8	78.5	84.0	74.7	60.5	55.6	102.3	105.6	120.6	119.6
2011-12	93.5	104.5	107.7	98.6	55.4	78.2	60.3	80.9	101.2	118.6	122.5	93.2
2012-13	82.1	115.9	80.5	83.1	63.9	85.2	73.6	77.6	103.9	93.7	99.8	99.8
2013-14	60.1	63.3	75.6	73.8	45.4	55.2	57.9(R)	61.2(R)	95.2(P)			
<b>Steatite</b>	<b>Weight- Base 2004-05=0.272</b>											
2010-11	155.1	145.1	135.2	127.9	89.8	91.5	99.3	94.0	137.0	156.2	152.2	145.9
2011-12	158.7	151.5	138.4	87.1	78.7	78.4	110.1	127.1	159.5	183.5	177.7	150.1
2012-13	141.6	168.6	146.3	152.7	97.9	67.7	117.2	123.1	137.3	144.3	131.4	133.6
2013-14	133.6	141.3	125.3	96.0	81.1	106.4	105.9(R)	111.3(R)	120.8(P)			
<b>Vermiculite</b>	<b>Weight- Base 2004-05=0.007</b>											
2010-11	368.5	236.0	232.8	412.6	1429.9	1359.9	1160.2	431.0	835.8	955.2	615.1	549.0
2011-12	413.3	336.5	587.0	495.4	162.8	74.6	40.5	34.8	636.1	161.0	190.1	611.9
2012-13	272.9	91.3	161.7	159.9	213.6	449.5	181.2	324.4	81.7	129.4	163.1	383.1
2013-14	550.8	345.4	114.8	57.2	131.5	91.0	71.1(R)	138.6(R)	413.3(P)			
<b>Wollastonite</b>	<b>Weight- Base 2004-05=0.117</b>											
2010-11	100.4	100.6	104.4	101.0	83.7	96.6	104.1	85.3	129.7	133.4	123.4	124.2
2011-12	129.9	134.9	112.7	118.8	94.9	85.4	96.2	100.4	95.8	101.9	99.4	103.8
2012-13	102.1	116.8	103.4	103.4	110.7	111.9	80.5	75.2	55.9	27.0	20.4	120.6
2013-14	69.9	88.2	92.4	105.6	141.3	140.1	136.4(R)	156.5(R)	143.2(P)			

Source : Indian Bureau of Mines, Ministry of Mines

स्रोत : भारतीय खान ब्यूरो, खान मंत्रालय।

R-Revised, P-Provisional

Contd.

April 2010 to Dec 2010 : Base 1993-94 =100

## सारणी संख्या 5.9 - अन्य खनिज के सूचकांक -समाप्त

Table No.5.9 - Index of Other Minerals-Concl'd.

Base : 2004-05=100

	Apr	May	Jun	Jul	Aug	Sep	Oct	Nov	Dec	Jan	Feb	Mar
<b>Dunite</b>	<b>Weight- Base 2004-05=0.003</b>											<b>डुनाइट (00003)</b>
2010-11	126.0	119.7	92.5	186.5	57.8	0.0	0.0	82.1	136.4	101.4	83.6	88.8
2011-12	91.4	127.8	85.6	138.2	165.7	40.7	126.9	210.2	295.7	237.6	213.2	483.6
2012-13	469.5	527.3	429.6	543.5	597.2	291.7	293.0	364.8	330.7	304.4	303.2	285.0
2013-14	225.2	225.5	254.4	342.3	286.8	215.4	314.1(R)	463.7(R)	288.9(P)			
<b>Felsite 2004-05=(0.001)</b>	<b>Weight- Base 2004-05=0.001</b>											<b>फेल्साइट (00001)</b>
2010-11	165.2	165.2	165.2	166.9	135.3	96.6	94.9	93.1	112.5	96.6	82.6	80.8
2011-12	63.3	72.0	112.5	161.6	91.4	52.7	87.9	188.0	175.7	84.3	94.9	110.7
2012-13	138.8	119.5	130.0	130.0	101.9	116.0	59.7	58.0	47.4	154.6	151.1	144.1
2013-14	158.1	181.0	184.5	42.2	22.8	51.0	52.7(R)	124.7(R)	123.0(P)			
<b>Laterite</b>	<b>Weight- Base 2004-05=0.103</b>											<b>लेटेराइट (00103)</b>
2010-11	180.8	217.4	150.9	36.5	31.1	35.3	54.3	38.4	64.1	73.0	84.8	89.5
2011-12	266.8	147.4	54.7	37.8	58.3	58.0	66.9	172.7	176.2	160.7	225.1	208.9
2012-13	336.7	320.0	287.0	292.4	315.7	275.2	339.5	301.5	386.7	382.0	383.6	450.5
2013-14	463.0	511.8	414.9	352.6	265.1	255.6	232.0(R)	288.8(R)	306.0(P)			
<b>Shale</b>	<b>Weight- Base 2004-05=0.051</b>											<b>शैल (00051)</b>
2010-11	108.9	115.6	99.9	128.8	112.7	130.8	148.3	98.1	133.6	180.8	162.7	161.2
2011-12	153.8	148.9	112.6	141.7	156.3	151.0	152.4	145.2	154.7	147.6	148.8	188.2
2012-13	354.1	219.2	220.1	115.2	116.0	144.1	125.2	137.3	115.5	146.5	127.0	148.6
2013-14	154.7	145.5	134.4	123.4	106.3	125.9	123.2(R)	140.6(R)	129.7(P)			

Source : Indian Bureau of Mines, Ministry of Mines

स्त्रोत : भारतीय खान ब्यूरो, खान मंत्रालय।

R-Revised, P-Provisional

April 2010 to Dec 2010 : Base 1993-94 =100