

सारणी संख्या 2.1 राष्ट्रीय उत्पाद एवं सम्बन्धित समाहार (आधार वर्ष 2004-2005 प्रचलित भावों पर)

Table No.-2.1 National Product and Related Aggregates
(At Current Prices- 2004-2005 Series)

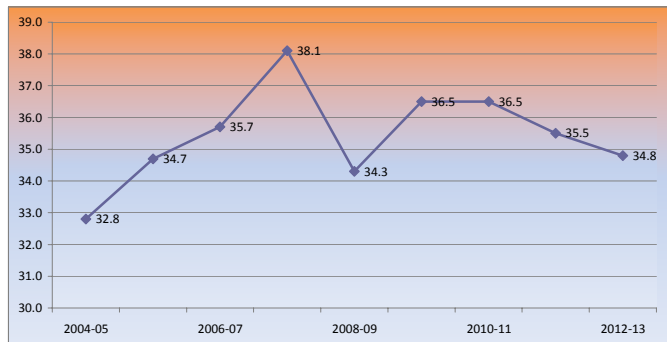
	2004-05	2005-06	2006-07	2007-08	2008-09	2009-10	2010-11(3rd RE)	2011-12 (2nd RE)	2012-13 (1st RE)	2013-14(AE)
Domestic Product at Market Price										
Gross	3242209	3693369	4294706	4987090	5630062	6477827	7784115	9009722	10113281	11320463
National Product at factor cost										
Gross	2949089	3364387	3920042	4561574	5270643	6070903	7167053	8314861	9272110	10411105
Net	2629198	3000666	3501313	4076878	4705446	5411104	6406834	7434965	8255978	9237643
NNP Per capita (₹)	24143	27131	31206	35825	40775	46249	54021	61855	67839	74920
Savings										
Gross	1050703	1235150	1485908	1836332	1802619	2182338	2621742	2824459	3043474	
Net	730812	871429	1067179	1351637	1237421	1522539	1861524	1944563	2027342	
Capital Formation										
Gross	1064041	1279753	1531432	1900762	1931379	2363132	2841457	3200633	3521399	
Net	744150	916033	1112704	1416067	1366182	1703333	2081239	2320737	2505267	
Final Consumption Expenditure in domestic market										
Private	1917508	2159537	2488688	2850394	3257945	3707566	4360323	5141896	5772059	6468689
Per capita (₹)	17608	19526	22181	25047	28232	31689	36765	42778	47429	52463
Government	354518	401619	443477	513021	615333	771151	891036	1025895	1189132	1372649
Rate of Savings (Per cent) *										
Gross	32.4	33.4	34.6	36.8	32.0	33.7	33.7	31.3	30.1	
Rate of Capital Formation (Per cent)*										
Gross	32.8	34.7	35.7	38.1	34.3	36.5	36.5	35.5	34.8	
Rate of Final Consumption Expenditure (Per cent)*										
Private (Domestic Market)	59.1	58.5	57.9	57.2	57.9	57.2	56.0	57.1	57.1	57.1

Source: Central Statistics Office.
AE = Advance Estimates.
RE= Revised Estimates.

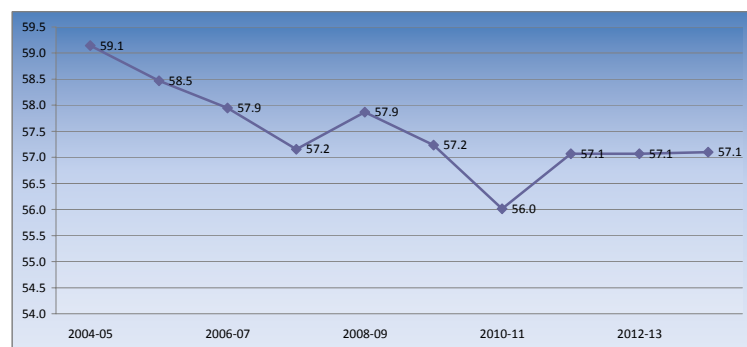
स्रोत :- केन्द्रीय सांख्यिकीय कार्यालय

* As per cent of Domestic Product at market price

Rate of Capital Formation (Per cent)*



Rate of Private Final Consumption Expenditure-Domestic Market (Per cent)*



सारणी संख्या 2.2 राष्ट्रीय उत्पाद एवं सम्बन्धित समाहार
(आधार वर्ष २००४-२००५ स्थिर भावों पर)

Table No.2.2 National Product and Related Aggregates
(At Constant Prices with base year 2004-2005)

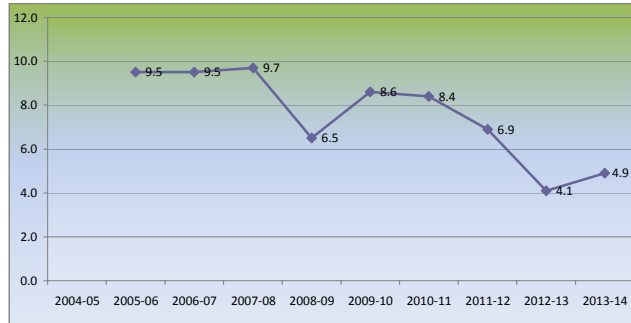
(Ten Mn./करोड़)

	2004-05	2005-06	2006-07	2007-08	2008-09	2009-10	2010-11(3rd RE)	2011-12 (2nd RE)	2012-13 (1st RE)	2013-14(AE)	
National Product at factor cost											
साधन लागत पर राष्ट्रीय उत्पाद											
Gross	2949089	3228177	3534849	3879457	4133292	4488314	4863886	5201163	5416659	5680827	सकल
Net	2629198	2877284	3149149	3451829	3664388	3966408	4293585	4573329	4728776	4927153	निवल
NNP Per capita()	24143	26015	28067	30332	31754	33901	36202	38048	38856	39961	निवल राष्ट्रीय उत्पाद
Capital Formation											
पूंजी निर्माण (समायोजित)											
Gross	1064041	1236927	1402369	1656892	1570333	1841262	2100497	2183259	2297807		सकल
Net	744150	886033	1016670	1229262	1101430	1319356	1530197	1555425	1609925		निवल
Final Consumption Expenditure in domestic market											
Private	1917508	2089852	2270688	2479686	2656483	2845303	3092373	3378506	3547584		निजी
Per capita ()	17608	18896	20238	21790	23020	24319	26074	28107	29150		प्रति व्यक्ति ()
Government	354518	386007	400579	438919	484459	551702	583544	623574	662032		सरकारी
Population (Crore)	108.9	110.6	112.2	113.8	115.4	117.0	118.6	120.2	121.7		(प्रतिशत वृद्धि)
(Percentage change)											
साधन लागत पर राष्ट्रीय उत्पाद											
Gross		9.5	9.5	9.7	6.5	8.6	8.4	6.9	4.1	4.9	सकल
पूंजी निर्माण											
Gross		16.2	13.4	18.1	-5.2	17.3	14.1	3.9	5.2		सकल
Final Consumption Expenditure											
private		9.0	8.7	9.2	7.1	7.4	8.7	9.3	5.0		सरकारी

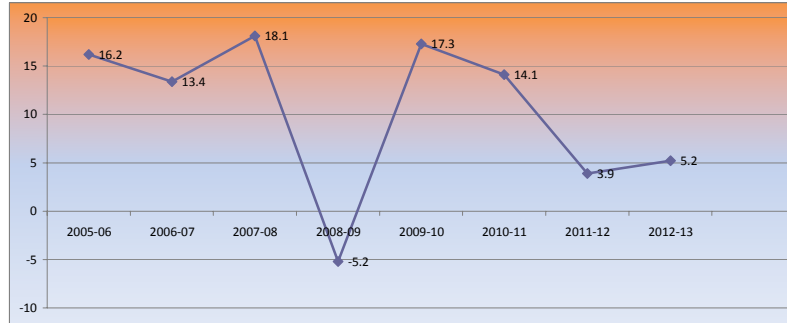
Source: Central Statistics Office.
AE = Advance Estimates.
RE =Revised Estimates

स्रोत :- केंद्रीय सांख्यिकीय कार्यालय

National Product at factor cost(Gross) (% change)



Capital Formation (Gross) (% change)



सारणी संख्या 2.3साधन लागत पर त्रैमासिक अनुमानित सकल घरेलू उत्पाद
Table No.2.3Quarterly Estimates of Gross Domestic Product at Factor Cost

(Ten Mn./करोड़)

	प्रचलित भावों पर				स्थिर भावों पर			
	(आधार वर्ष 2004.2005)				(आधार वर्ष 2004.2005)			
	At Current Price (base year 2004-05)				At Constant Prices (base year 2004-2005)			
	जून	सितम्बर	दिसम्बर	माच	जून	सितम्बर	दिसम्बर	माच
	Jun	Sep	Dec	Mar	Jun	Sep	Dec	Mar
Agriculture, forestry & fishing	कृषि, वानिकी तथा मछली							
2009-10	233318	199810	338527	307710	156740	126524	201853	177390
2010-11	281616	239595	420540	365192	163231	134678	224698	190868
2011-12	332490	274539	467101	391624	171966	138987	233894	194649
2012-13	379221	307017	521590	437006	176888	141334	238106	197282
2013-14	421768	370600			181705	147874		
Mining & quarrying	खनन तथा उत्खनन							
2009-10	35076	34807	40528	46989	24616	23676	26582	29351
2010-11	45581	44842	50753	54916	26318	25291	28083	29246
2011-12	46169	43139	50544	61224	26205	23942	27345	30758
2012-13	52328	48933	55398	62250	26302	24345	27157	29815
2013-14	50144	49632			25568	24245		
Manufacturing	बिनिर्माण							
2009-10	206901	220234	228127	251770	167571	176550	180421	195187
2010-11	250693	257868	271045	301145	189313	193941	201334	216889
2011-12	292216	289720	297598	322551	203349	199873	202665	217136
2012-13	304505	308004	321697	345761	201230	200001	207689	222728
2013-14	310463	317816			198827	202027		
Electricity, gas & water	बिजली, गैस और जल							
2009-10	27296	28267	27914	29045	21902	22175	21656	22533
2010-11	32193	32271	32620	33924	22993	22685	22930	24165
2011-12	35123	35609	36794	37292	24508	24599	24686	26020
2012-13	40493	42831	43526	43387	26018	25386	25798	26716
2013-14	51413	52117			26978	27348		
Construction	निर्माण कार्य							
2009-10	116777	120474	126132	138807	86032	86377	88339	94970
2010-11	140199	139795	149575	165885	94838	93093	97625	105137
2011-12	159614	163548	174463	187580	98410	99167	104350	110485
2012-13	183795	181987	192625	208980	105340	102267	107347	115322
2013-14	197872	201463			108266	106651		
Trade, hotels, transport & communications	व्यापार, होटल, परिवहन और संचार							
2009-10	338204	356318	378591	412363	279250	289020	301003	327941
2010-11	415817	424105	445948	488838	318593	323781	333815	369471
2011-12	506682	504993	529152	561732	348903	346452	356768	388189
2012-13	575246	586998	604479	643243	370198	369996	379550	412291
2013-14	625323	647018			384567	384950		
Financing, insurance, real estate, etc.	वित्त व्यवस्था, बीमा, स्थावर सम्पदा आदि							
2009-10	226550	234675	243471	257490	187106	189145	192558	201074
2010-11	276362	283677	294923	310939	205748	208712	214128	221044
2011-12	330340	340887	349904	363349	229638	234460	238586	246124
2012-13	388305	399432	406400	423260	250955	253996	257216	268516
2013-14	443877	468550			273388	279310		
Community, social & personal service	सामुदायिक, सामाजिक एवं वैयक्तिक सेवाएं							
2009-10	184688	224894	227337	248396	134423	156838	154070	164765
2010-11	215562	257738	246449	296363	139577	163084	152527	179170
2011-12	243460	299609	285576	336874	144517	173628	162959	191365
2012-13	287824	353086	327070	384332	157324	188204	172006	199111
2013-14	337038	398053			172149	196189		
Gross domestic product at factor cost	कारक लागत पर सकल घरेलू उत्पाद							
2009-10	1368811	1419478	1610627	1692569	1057641	1070305	1166482	1213211
2010-11	1658021	1679891	1911853	2017202	1160611	1165264	1275140	1335989
2011-12	1946093	1952044	2191132	2264227	1247496	1241106	1351252	1403727
2012-13	2211718	2228289	2472785	2548220	1314256	1305531	1414869	1470782
2013-14	2437898	2505249			1371446	1368594		

Source:- Central Statistics Office.

स्रोत: केन्द्रीय सांख्यिकीय कार्यालय